

# 2500 Frame Series Single-Vertical Distribution System

## Key Features

- Single-sided system allows all frame administration to be performed on one side
- Common jumper trough permits short jumpers for labor savings
- Modular design is easily expanded
- Frame is factory pre-assembled for quick, easy installation
- Versatile block mounting can be configured to all pair requirements
- Frame is offered with one vertical and can be used as a double-sided aisle mount

## Description

The 2500 Frame Series from Emerson is a single-sided, single-vertical modular distribution system. Its versatile configuration can meet a variety of pair sizing requirements.

For protection, the frame mounts R399 100-pair central office connectors. For equipment terminations, the frame will mount any conventional front-facing line terminal blocks with 8-in. mounting centers, including 89 type blocks and Emerson 2376 blocks. For building entrance applications, the 2500 Frame accommodates 66-clip termination.

Each vertical of the 8-ft. frame has ten block positions, which allows a maximum of 1000 protected pairs per vertical. The frame is floor or wall mounted, comprised of one vertical, one horizontal jumper trough for wire distribution to adjacent verticals, multiple jumper retainers for wire management, and top trough and bottom guide for conventional wire routing.

This versatile series can mount either an R399, a line terminal block, or a horizontal jumper trough in any block position, allowing for any combination of protected and equipment blocks on each frame. Multiple frames can be suitably spaced and connected together to meet the required application size. Each frame module has jumper access to adjacent modules through the use of horizontal or top jumper troughs.

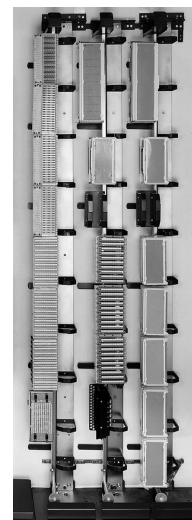
Splice brackets are provided for multiple frame installations to tie them together on 9-in. centers.

This series is also available in a 7-ft. version.

## Application

The 2500 Frame Series is designed specifically for small frame applications from 100 pair up to 15,000 pair. This frame provides optimum protection/cross connection capabilities for:

Central Office  
CLEC Applications  
Co-Locations  
Building Entrance Installations  
Remote Terminals



**Three Frames  
(2500FRAME2)  
Side-by-side**

# 2500 Frame Series Single-Vertical Distribution System

## Ordering Information & Accessories

| Catalog Number | Part Number | Description   | — Dimensions — |       |          |
|----------------|-------------|---|----------------|-------|----------|
|                |             |   | H              | W     | D        |
| 2500FRAME2*    | F151322     | 8-ft. frame module with 1 horizontal trough   | 8-ft.          | 8-in. | 14.9-in. |
| 25007FRAME2*   | F151319     | 7-ft. frame module with 1 horizontal trough   | 7-ft.          | 8-in. | 14.9-in. |
| 2500MB         | F150679     | Mounting bracket for 89-style front facing terminal blocks; one needed for each terminal block. |                |       |          |
| 2500IGND2      | F1004497    | Isolated ground kit (optional)  |                |       |          |
| 23571          | F150645     | Terminal block mounting brackets for vertical mounting  |                |       |          |
| 23572          | F150646     | Terminal block mounting brackets for horizontal mounting  |                |       |          |

\* Adjacent frames could be mounted on 8-in.centers, but 9-in. centers are recommended.

NOTE 1: Mounts all R399 and 89 type blocks.

NOTE 2: The R399 connector and the 2376 blocks mount directly to the frame.

NOTE 3: Each 89-style front facing line terminal block requires a mounting bracket.

NOTE 4: Line terminal blocks are mounted vertically.

NOTE 5: Each frame module has 1 horizontal trough, which can mount in any block position.

NOTE 6: One top trough and bottom wire guide is included with each frame.

NOTE 7: Standard frame includes ground bar & ground splice.

## Capacities

### 2500 Series (8-ft. frame)

Each vertical can mount ten (10) R399s (9 if using jumper through).

Each vertical can mount ten (10) 89-style (9 if using jumper through).

Each vertical can mount six (6) 2376 blocks.

### 2500 Series (7-ft. frame)

Each vertical can mount nine (9) R399s (8 if using jumper through).

Each vertical can mount nine (9) 89-style terminal blocks (8 if using jumper through).

Each vertical can mount five (5) 2376 blocks.

## Emerson Network Power.

The global leader in enabling  
*Business-Critical Continuity™*.

- AC Power
- Embedded Power
- Precision Cooling
- Connectivity
- Infrastructure Management & Monitoring
- Racks & Integrated Cabinets
- DC Power
- **Outside Plant**
- Services
- Embedded Computing
- Power Switching & Controls
- Surge Protection

### Emerson Network Power Energy Systems

4350 Weaver Parkway, Warrenville, IL 60555  
Toll Free: 800-800-1280 (USA and Canada)  
Telephone: 440-246-6999 Fax: 440-246-4876  
Web: EmersonNetworkPower.com/OSP

© 2010 Emerson Network Power Energy Systems,  
North America, Inc. All rights reserved.

Emerson®, Emerson Network Power™, *Business-Critical Continuity™*,  
NetReach™, NetSpan™ and NetXtend™ are trademarks of  
Emerson Electric Co. and/or one of its subsidiaries.

Printed in USA

