

## OVERVIEW

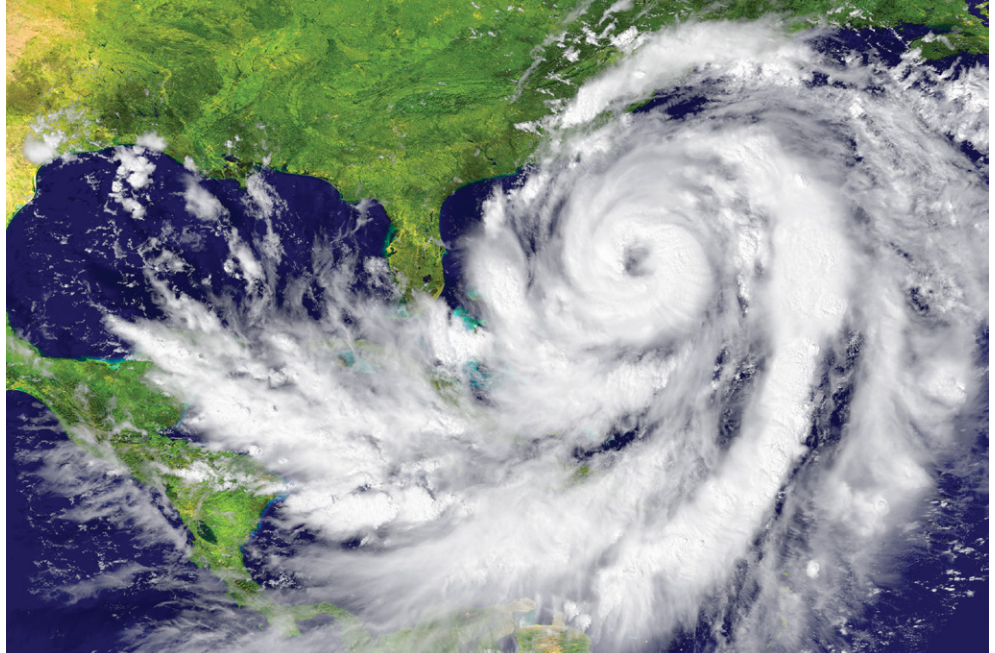
### A Partner You Can Depend On

Vertiv™ Services is no stranger to helping when disaster strikes by taking measures to provide quick and responsive service to our customers in any affected area.

We dispatch additional service personnel from across the country and establish local command centers to provide on-site support to our customers.

Anytime electrical equipment is subjected to water, it can become extremely dangerous, especially if the equipment is rebooted without a proper evaluation by a trained professional. Salt water from the ocean can be extremely harmful due to its residue and its corrosive and conductive characteristics.

We have put together some preliminary tips and information below for when you are trying to get your systems back online.



### Battery Tips:

- If your system ran on batteries to end-of-discharge and sat in a discharged state, the batteries must be recharged within 24 hours to prevent damage to the batteries.
- Batteries that sit in a discharged state will start to build up sulfate on the + plates.
- This sulfation will increase the interior resistance of the batteries, leading up to a loss of capacity.
- Sulfated plates will also increase the internal temperature of the batteries during recharge, potentially leading to a thermal runaway condition. The older the batteries, the more susceptible to thermal issues.

Keep in mind, typical 12-volt valve-regulated lead-acid (VRLA) batteries have an expected service life of 4-6 years. Be proactive, not reactive.

### Power Equipment Tips:

The National Electrical Manufacturers Association (NEMA) publishes a guide on how to evaluate electrical equipment exposed to water damage. [Read the most current recommendation](#) before addressing your power equipment.

| EQUIPMENT   | REPLACE EQUIPMENT | MAY BE RECONDITIONED |
|---|-------------------|----------------------|
| <b>POWER EQUIPMENT (refer to section 4.3 of NEMA guidelines)</b>  |                   |                      |
| Electronic trip units of low-voltage power circuit breakers   | X                 |                      |
| High-voltage circuit breakers (AC)  |                   | X                    |
| Low-voltage power circuit breakers  |                   | X                    |
| Electromechanical protective relays, meters, and current transformers (see section 4.11 for devices that contain electronic components) |                   | X                    |
| Electronic protective relays, meters, and current transformers (see section 4.11)   | X                 |                      |
| Low-voltage switchgear  |                   | X                    |
| Medium-voltage switchgear   |                   | X                    |
| Medium-voltage fuses  | X                 |                      |

**UPS Rental Program Information:**

When you're recovering from a catastrophic failure and need to ensure power to support critical applications, time is of the essence. Vertiv™ has equipment rentals to meet virtually any power need. Our UPS rental program offers the following benefits:

- Streamline recovery efforts
- Minimize downtime
- Reduce capital costs
- Capitalize on original equipment manufacturer (OEM)

Vertiv Services stands ready to respond to your needs during this difficult time. Please remember safety is key when working with potentially water-damaged equipment. For additional information, please contact your local Vertiv Services representative by [completing our contact form](#) or referring to NEMA's guidelines for handling water-damaged electrical equipment.

