

Vertiv™ Environet™ Alert

Monitoring Software for Data Center Hardware



Overview

Vertiv™ Environet™ Alert provides an easy-to-use monitoring software solution that helps ensure the continuous power and cooling of your critical infrastructure. Get monitoring, alerting and trending at a price that's right for your business.

Benefits

- Increase your operational awareness and visibility into key assets
- Monitor your devices via streamlined integration with other business systems
- Improve the uptime of servers with proactive threat resolution
- Save time with easier setup, management and monitoring
- Identify trends to plan and optimize operations across all locations
- Ensure consistent processes and systems across data centers and server rooms

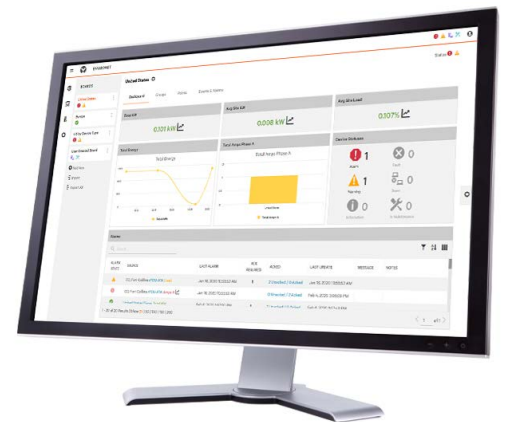
Use Environet Alert to monitor your critical infrastructure. Start today.

Monitoring software and services ensure uninterrupted operations, optimal performance and scalability of networks, enabling companies to run and grow their businesses. However, enterprise-scale tools are often out-of-reach for small and medium-sized businesses (SMBs) or industry companies that operate small edge sites or remote offices. Consequently, these companies have typically settled for more limited business functionality, increasing risk and cost.

With Vertiv Environet Alert, industry companies can acquire critical facility monitoring software that is affordable and easy to use. This solution provides superior monitoring, alerting, trending and data organization capabilities for companies in such verticals as healthcare, financial services, government and more, helping you protect and grow your business.

Environet Alert is designed to achieve SMB and enterprise goals such as:

- **Improve facility monitoring**
Real-time monitoring and alerts protect critical infrastructure, such as power and cooling devices, from performance issues, increased costs and downtime.
- **Increase visibility and control**
Use Environet Alert as a single pane of glass into your operations to enhance your business control and the effectiveness of your IT team. Receive immediate notification to appropriate personnel when critical data points are in alert or alarm status.
- **Customize data**
Set your own views with our modern user interface to focus on the data you need, such as data classes or uninterruptible power systems (UPSs) across all locations.
- **Manage threats proactively**
Identify and address threats before they harm your operations, increasing your uptime, maintaining business operations and protecting your customers.
- **Ensure high-availability readiness**
Ensure continuous operations and maintain your service-level agreements (SLAs) with high-availability readiness.

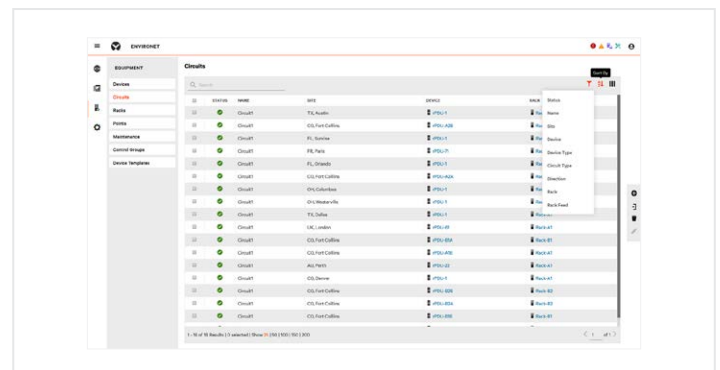
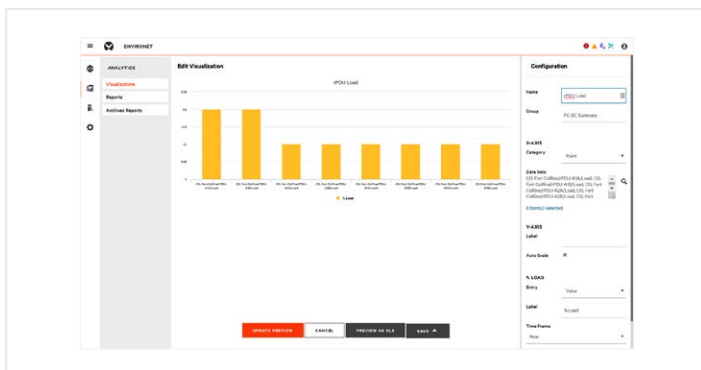
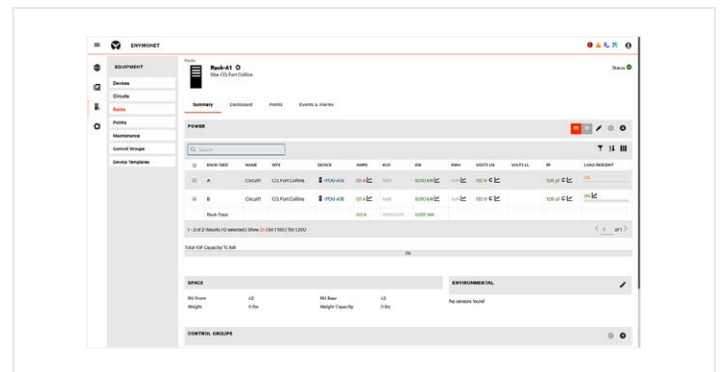
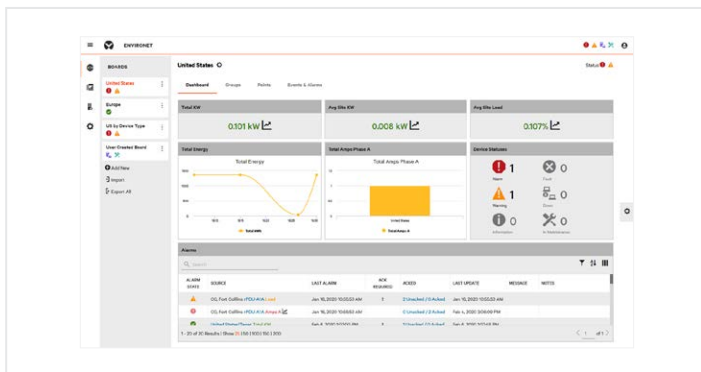


- **Connect all operations**
Use our API to connect to remote DCIM and building management systems (BMS) for a more complete picture of your network operations.
- **Streamline device management**
Integrate Environet Alert data with other networking management tools for easier management.
- **Leverage integrated services**
Use our optional starter pack or purchase turnkey services if you don't want to configure devices.
- **Increase your business flexibility**
Manage both Vertiv and non-Vertiv SNMP devices at no additional cost to run your business the way you want to, while protecting your budget.

- Scale across devices and locations**
 Environet™ Alert can scale to thousands of devices, supporting your growing business.
- Gain an affordable solution**
 Environet Alert is a budget-friendly solution, making it easy for SMBs and enterprises to deploy at stand-alone locations, edge sites or remote offices.
- Benefit from fast and easy configuration** — Set up Environet Alert yourself with easy-to-follow steps. Handle your own device moves and additions, eliminating the need for support and streamlining device management.

Technical Specifications

Requirement	Minimum	Recommended
Operating System	Windows 7, 8, 8.1, 10 Windows Server 2008 R2 Windows Server 2012 R2 Windows Server 2016 Windows Server 2019	Windows Server 2019
CPU (Intel or AMD)	4 CPU 2.0 GHz or Higher	(Intel or AMD) ≥6 CPU ≥2.2 GHz or Higher
RAM	8 GB	≥16GB
Disk Space	100 GB	≥300 GB
Disk I/O	15 MBps read/write speed	≥200 MBps read/write speed
Network	10/100 MBps	≥1GBps



Vertiv.com | Vertiv Headquarters, 1050 Dearborn Drive, Columbus, OH, 43085, USA

© 2020 Vertiv Group Corp. All rights reserved. Vertiv™ and the Vertiv logo are trademarks or registered trademarks of Vertiv Group Corp. All other names and logos referred to are trade names, trademarks or registered trademarks of their respective owners. While every precaution has been taken to ensure accuracy and completeness here, Vertiv Group Corp. assumes no responsibility, and disclaims all liability, for damages resulting from use of this information or for any errors or omissions. Specifications, rebates and other promotional offers are subject to change at Vertiv's sole discretion upon notice.