

## Features

- Alarm notifications via email, SMS and on-screen icons
- Shutdown protection for individual and virtual servers\*
- Auto discovery of devices
- Access to each UPS and rPDU web interface
- Alarm views with data that can be sorted or filtered
- Summary data of individual devices
- Redundant device support
- Dashboard views of key data points such as capacity load percentage, output current, battery percentage charge and battery time remaining
- Sequential server shutdown function to extend runtime for the most critical loads

## Benefits

- Provides fast notification to appropriate personnel if a problem occurs.
- Protects IT equipment with controlled automated shutdown.
- Simplifies monitoring remote power infrastructure 24/7.
- Minimizes configuration time with fast install and access to each UPS web interface.
- Organizes data for efficient decision making

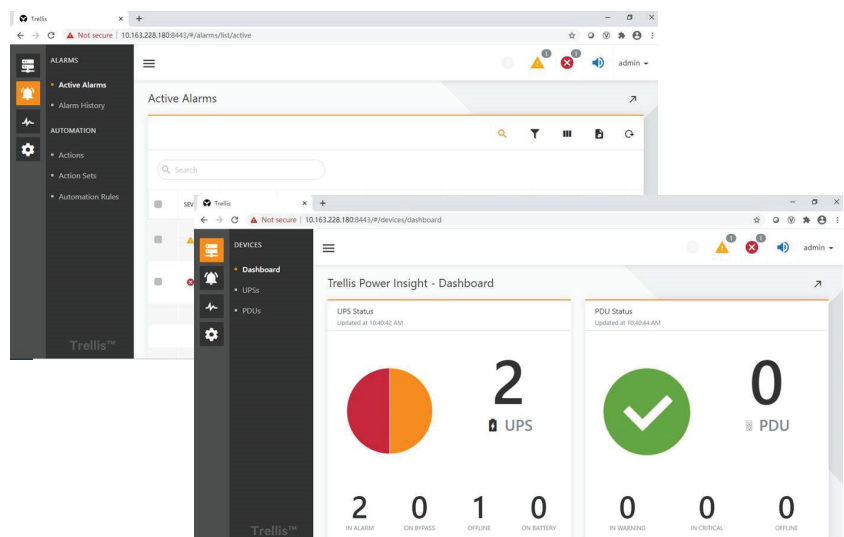
*Trellis™ Power Insight helps improve efficiency, protect valuable critical equipment and increases visibility of your UPSs and rack PDUs. It is a web-based software designed for users with a distributed infrastructure who need a way to manage multiple devices. The software is a simple to install, easy to use application that provides a single interface for up to 100 devices.*

Trellis™ Power Insight provides an enhanced user experience so you get the most out of your UPS and rPDUs infrastructure. This complementary software sends alerts if there are issues with the connected devices and provides a quick way to safely shutdown IT devices based on user-configured parameters. In addition to providing a holistic view of your UPSs and rack PDUs, it also helps track and maintain inventory information for connected devices.

## Solving Problems, Adding Value

Monitoring your UPSs and rPDUs is crucial to keeping distributed IT infrastructure running smoothly. Managing equipment locally or at remote sites can be challenging and costly. It takes time and resources to configure, track and maintain critical devices. Being able to manage them from another location saves time and cost. Trellis™ Power Insight provides users with the tools they need to effectively manage their UPSs and rPDUs.

Trellis™ Power Insight extends the life of the connected devices and increases the value of your hardware investment. Alerts via email, SMS or on-screen let you know when there is a problem. The controlled server shutdown helps reduce equipment damage and business interruptions by gracefully shutting down devices should a critical event occur. The software also eliminates the need for adding devices manually saving valuable set-up time.



## Supported UPS

Model	Interface	Model	Interface
ITA (Up to 3kVA)	3	GXT3 (Up to 10kVA)	4
ITA2 (Up to 3kVA)	1, 3	GXT4 (Up to 10kVA)	4
ITA2 (Up to 20kVA)	3, 4	GXT5 (Up to 20kVA)	5
eXM (Up to 200kVA)	4	GXE (Up to 3kVA)	3
APM (Up to 250kVA)	4	GXE2 (Up to 20kVA)	3, 4
EXS (Up to 40kVA)	4	GXT MT+	2
APS (Up to 20kVA)	4	GXT RT+	2
PSI (Up to 3kVA)	2	EDGE (Up to 3kVA)	4
PSI5 (Up to 5kVA)	4		

**Legend (Type #, Interface):** (1) Integrated SNMP Port / (2) Web Card / (3) SIC Card (810) / (4) Unity-DP Card / (5) RDU101

## Supported Geist™ GU1 and GU2 rPDUs

- 1Phase - 0 Circuits
- 1Phase - 1 Circuit
- 1Phase - 2 Circuits
- 3Phase WYE - 0 Circuits
- 3Phase WYE - 3 Circuits
- 3Phase WYE - 6 Circuits
- 3Phase DELTA - 3 Circuits
- 3Phase DELTA - 6 Circuits

## Supported Liebert® MPH2 and MPX rPDU Configurations:

- 1 Phase - 1 Circuits (1P3W - 1 Branch)
- 1 Phase - 2 Circuits (1P3W - 2 Branch)
- 3 Phase WYE - 3 Circuits (3P5W - 3 Branch)
- 3 Phase WYE - 6 Circuits (3P5W - 6 Branch)
- 3 Phase DELTA - 3 Circuits (3P4W - 3 Branch)
- 3 Phase DELTA - 6 Circuits (3P4W - 6 Branch)

## Trellis™ Power Insight Specifications

Trellis™ Power Insight can be installed on a 64-bit machine with minimum system requirements of 8GB memory, 4-core CPU, and 256GB HDD. The recommended system requirements are 8GB memory, 8-core CPU, and 2TB HDD.

Supported operating systems include Microsoft® Windows® 7 and 10 64bit; Microsoft® Windows Server® 2012 R2 and 2016 64bit; Red Hat® Enterprise Linux® 7.1 (with GUI installed). The recommended browser for both desktop and mobile devices is Google Chrome™ 55 or later. Other browsers supported include Microsoft® Edge 38 or higher, Internet Explorer® 11, Firefox® 51 or later, and Safari® Mobile 9. Default ports that need to be open for communication are 8443, 27017.

\*Automation Agent (used for server shutdown) supports Microsoft® Windows® 7, 8.1 and 10 (32bit and 64bit), Microsoft® Windows Server® 2008 R2 (64bit), Microsoft® Windows Server® 2012 R2 (64bit), Microsoft® Windows Server® 2016 (64bit), Red Hat® Enterprise Linux® 6.7, 6.9 7.1-7.4 (all-64bit), VMWare ESXi 5.5, 6.0 and 6.5 (64bit), Microsoft Hyper-V Server 2016 (64bit), Microsoft Hyper-V Server 2012 R2 (64bit).

## Vertiv.com

© 2020 Vertiv Group Corp. All rights reserved. Vertiv™ and the Vertiv logo are trademarks or registered marks of Vertiv Group Corp. All other names and logos referred to are trade names, trademarks or registered trademarks of their respective owners. While every precaution has been taken to ensure accuracy and completeness herein, Vertiv Group Corp. assumes no responsibility, and disclaims all liability, for damages resulting from use of this information or for any errors or omissions. Specifications are subject to change without notice.