

Vertiv™ Knürr® Cable Management

Features

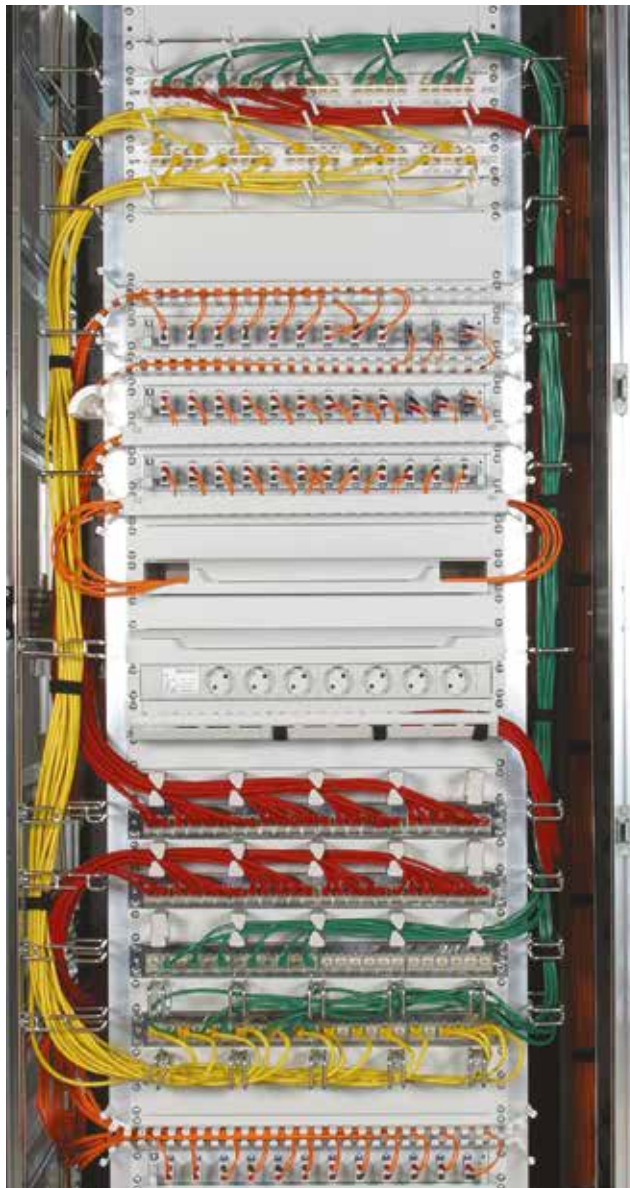
- Allows for prescribed cable radii.
- Components are easy to secure and use.
- Components feature addition functions.
- Extensive use of reusable Velcro strips precludes cable strain.
- No blockage of airflow within the rack.

Global networking is continuing to grow, meaning users are in need of an intelligent cable management solution.

To meet this demand, Vertiv Knürr offers a range of products and solutions for server racks, active and passive network racks, as well as special racks.

Our range not only allows you to quickly and easily set up and dismantle racks, it also makes it much simpler to troubleshoot problems in your systems and expand your systems. Our cable management components are all based on a number of key principles: Simple and self-explanatory operation, versatile application options, a clear structure, and a cost-efficient design.

Thanks to the Vertiv Knürr cable management system, your rack will be equipped for the future and will save you time and money for the long term.





MEC20064

Vertiv™ Knürr® Cable Management Terminology

Laying cables involves ensuring that mechanical stresses are completely avoided.

■ Bending load

The bending radii may never fall below the values provided by the cable manufacturer in the respective data sheets. Where excessive bending occurs, the cables' electrical properties are impaired, and transmission bandwidths and ranges are adversely affected. If manufacturer specifications are not available, then the following rule of thumb applies: loose cabling should be at least 15 times the external cable diameter and fixed cabling at least 10 times the external cable diameter.

■ Buckling load

Extreme bending loads can cause the cable to break.

■ Tensile load

This is determined solely by the copper cross-section of the conductor, as all other materials are too soft. The cable may not be exposed to stress exceeding 50 N/mm² (Cu cross-section) as this causes the conductors to stretch which reduces the cross-section. If higher "pulling" forces are required, cables with additional strain-reduction elements must be used.

■ Compressive stress

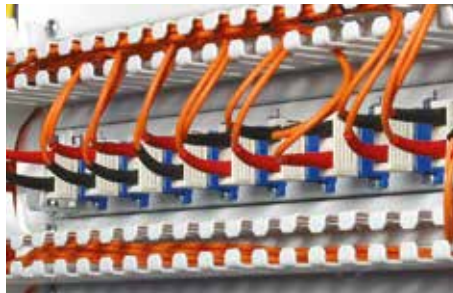
Compressive stress is caused by loads bearing down from above, fixed clamping or sharp cable kinking and must always be avoided, as otherwise the "loose" cable structure changes and electrical transmission properties are impaired.

■ Torque strains (twisting)

Cables must never be subjected to torque strains, as they cause cable elements to shift and change their position relative to each other, thereby impairing transmission properties.



MEC20084



MEC20086

Vertiv™ Knürr® Cable Management Proper Usage

- Various components for fiberglass and copper cables – especially fastening options such as Velcro and cable bundling using different colored strips – guarantee transparent cable management, providing an optimal starting point for both intelligent network expansion and ideal service convenience. (1)
- Special attention has been paid to ensuring that all cable management components can be fastened with Velcro strips which eliminate cable strain and can be reused at any time. Velcro cable ties also aid the installation technician as they are easily manageable, using pinch-free cable bundling. (2)
- Excess cable is stored separately from the patch fields while remaining easily accessible. Copper cable excess can be stored separately from fiber glass excess within the Knürr rack systems: the copper cables are stored on the side while the more sensitive fiberglass cables are stored in a drawer at the front. (3)
- A closer look at the individual products reveals their outstanding versatility. The cable-routing multifunctional brace, for example, not only provides the option of routing cables both horizontally and vertically using Velcro or cable ties, but additionally allows numerous components to be mounted with screws and caged nuts. These caged nuts can also be shifted in a slot with room for play, so that every mounting dimension is accommodated. (4)



1. MEC20082



2. MEC20070



3. MEC20099

Vertiv™ Knürr® Cable Management

Overhead Cabling

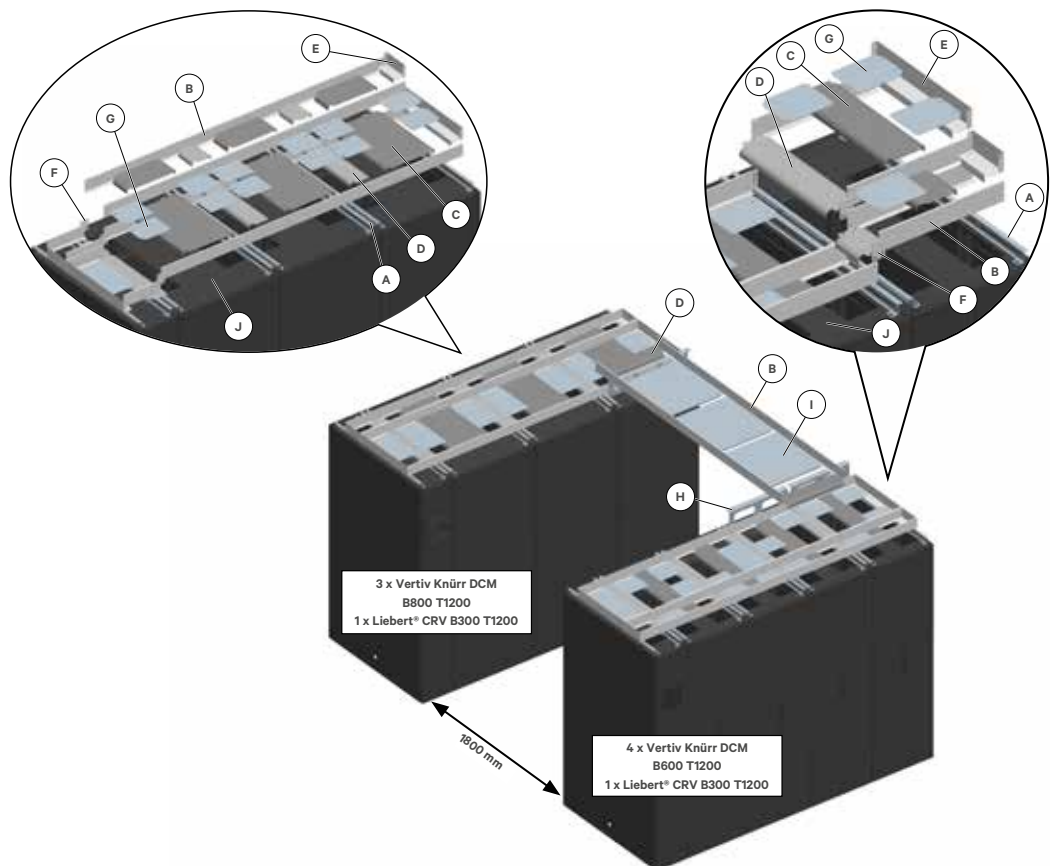
Features

- Modular, extremely flexible.
- Robust construction.
- Includes integrated radius for cable entry into rack.
- New cover panel with lateral cable entry.
- Selection of cable throughs and mesh cable trays.
- Suitable for Vertiv Knürr DCM and Vertiv Knürr MIR.
- Includes Vertiv SmartAisle™ enclosure.
- Various combinations possible.

Vertiv's Overhead Cabling Solution

The Vertiv Knürr overhead cable management system is a complete, modular system which offers a variety of cable-tray installment options. The components are very flexible and can be installed on site or modified with ease, to accommodate cable-management requirements that differ from rack to rack. This extremely sturdy and robust system can withstand high stress levels and is suitable for any application. Combined with other items from the Knürr cable-management product range, it provides a comprehensive solution that delivers proper cable bend radii.

Example of Overhead Configuration



Legend

- A** Support bracket
- B** Mounting bracket
- C** Center panel insert
- D** Transitional cover
- E** End panel insert
- F** Connecting panel insert
- G** Cover plate
- H** Support bracket cross-cabling
- I** Cover cross-cabling
- J** New cover panel with lateral cable entry

Configuration Assistant

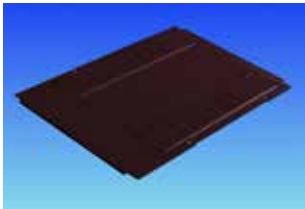
| Sample Order | Name | Item | |
|---------------------------|--|------|------------------|
| - Left rack suite | | | |
| | Vertiv Knürr DCM B800 T1200 | 3 | 01147.722.8 |
| | New cover panel with lateral cable entry (J) | 3 | 01147.579.8 |
| | Liebert® CRV B300 T1200 | 1 | CR0302XXX-XXXXXX |
| | Support bracket (A) | 4 | 05.045.005.X |
| | Mounting bracket (B) | 2 | 05.045.011.X |
| | | 2 | 05.045.015.X |
| | Center panel insert (C) | 3 | 05.045.023.X |
| | | 3 | 05.045.024.X |
| | Transitional cover (D) | 3 | 05.045.031.X |
| | | 3 | 05.045.032.X |
| | End panel insert (E) | 1 | 05.045.041.X |
| | | 1 | 05.045.042.X |
| | Connecting panel insert (F) | 1 | 05.045.045.X |
| | Cover plate (G) | 2 | 05.045.047.X |
| - Right rack suite | | | |
| | Vertiv Knürr DCM B800 T1200 | 4 | 01147.714.8 |
| | New cover panel with lateral cable entry (J) | 4 | 01147.574.8 |
| | Liebert® CRV B300 T1200 | 1 | CR0302XXX-XXXXXX |
| | Support bracket (A) | 4 | 05.045.005.X |
| | Mounting bracket (B) | 2 | 05.045.011.X |
| | | 8 | 05.045.012.X |
| | Center panel insert (C) | 4 | 05.045.021.X |
| | | 4 | 05.045.022.X |
| | Transitional cover (D) | 4 | 05.045.031.X |
| | | 4 | 05.045.032.X |
| | End panel insert (E) | 1 | 05.045.041.X |
| | | 1 | 05.045.042.X |
| | Connecting panel insert (F) | 2 | 05.045.045.X |
| | Cover plate (G) | 2 | 05.045.047.X |
| - Cross-cabling | | | |
| | Support bracket (H) | 1 | 05.045.052.X |
| | | 1 | 05.045.053.X |
| | Mounting bracket (B) | 1 | 05.045.015.X |
| | Transitional cover (D) | 2 | 05.045.032.X |
| | Cover (I) | 1 | 05.045.057.X |

| Required Data for Overhead Cabling | Example |
|--|----------------------------|
| - Width of racks in the rack suite (300, 600 or 800 mm) | Rack width (W) = 800 mm |
| - Depth of racks in the rack suite (1000 to 1200 mm) | Rack depth (D) = 1200 mm |
| - Number of racks in one rack suite | |
| - Aisle width (Standard dimensions 1200, 1500 and 1800 mm ± 50 mm) – for cross-cabling | Aisle width (AW) = 1800 mm |
| - Color light-grey RAL 7035 or dark-grey RAL 7021 | Dark-grey RAL 7021 |

Prerequisites for Overhead Cabling

J

Cover panel with lateral cable entry



DCM20079

- With lateral cable entry on both sides (sliding plates).
- For orderly cable management with in the rack.
- Optional brush strips.

■ **Material**

- Sheet steel, 1.5 mm.

■ **Finish / Color**

- Final digit of order number .1: powder-coated, RAL 7035.
- Final digit of order number .8: powder-coated, RAL 7021.

■ **Scope of delivery**

- 1 Deckel mit seitlicher Kabeleinführung.
- Montagematerial.

■ **How supplied**

- In sets.

| W _{Rack} | D _{Rack} | For rack type | Order No. | UP |
|-------------------|-------------------|---------------|---------------------|--------|
| 600 | 1000 | MIR2 / DCM | 01.147.572.X | 1 unit |
| 600 | 1100 | MIR2 / DCM | 01.147.573.X | 1 unit |
| 600 | 1200 | MIR2 / DCM | 01.147.574.X | 1 unit |
| 800 | 1000 | MIR2 / DCM | 01.147.577.X | 1 unit |
| 800 | 1100 | MIR2 / DCM | 01.147.578.X | 1 unit |
| 800 | 1200 | MIR2 / DCM | 01.147.579.X | 1 unit |

K

MIR2 / DCM cover panel short



DCM20081

- For covering the front overhead area; the rest remains open.
- Facilitates unobstructed cable entry inside the rack.

■ **Material**

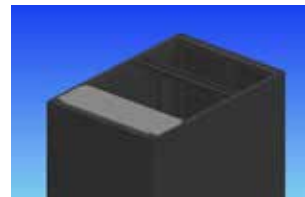
- Sheet steel, 1.5 mm.

■ **Finish / Color**

- Powder-coated texture, RAL 7021, dark-grey.

■ **Scope of delivery**

- 1 x cover panel, short.
- 1 x Mounting kit.



DCM20080

■ **How supplied**

- In sets.

| W _{Rack} | L | For rack type | Order No. | UP |
|-------------------|-----|---------------|---------------------|--------|
| 600 | 250 | MIR2 / DCM | 01.147.268.8 | 1 unit |
| 800 | 250 | MIR2 / DCM | 01.147.269.8 | 1 unit |

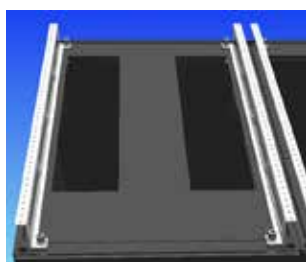
| Dimensions in mm: | | | | Conversion: |
|-------------------|-------------------------|------------------------|-------------|----------------------|
| W = Width | h = Installation height | U = Standard rack unit | kg = Weight | 1 mm = 0.03937 inch |
| H = Height | d = Insertion depth | (1 U = 44.45 mm) | | 1 kg = 2.2046 pounds |
| D = Depth | L = Length | UP = Packaging unit | | |

A

Support bracket



MEC20200



MEC20201

- Secures corner piece at the top of the rack.
- Quick and easy mounting.
- Suitable for both MIR2 and DCM racks.
- Includes screw for securing the mounting brackets, transitional cover and end panel inserts.

- **Material**
 - Sheet steel 2.0 mm.

- **Finish**
 - Final digit of order number .1: powder-coated, RAL 7035 light-grey.
 - Final digit of order number .8: powder-coated, RAL 7021 dark-grey.

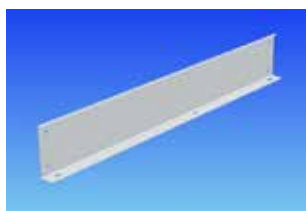
- **Scope of delivery**
 - 2 x support brackets.
 - 1 x Mounting kit.

- **How supplied**
 - In sets.

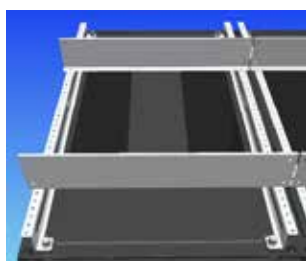
| H | D _{Rack} | For rack type | Order No. | UP |
|----|-------------------|---------------|--------------|-------|
| 44 | 1000 | MIR2 / DCM | 05.045.003.X | 1 set |
| 44 | 1100 | MIR2 / DCM | 05.045.004.X | 1 set |
| 44 | 1200 | MIR2 / DCM | 05.045.005.X | 1 set |

B

Mounting brackets



MEC20202



MEC20203

- Secured on support bracket.
- Quick and easy mounting.
- Separate cable trays.

- **Material**
 - Sheet steel 1.0 mm.

- **Finish**
 - Final digit of order number .1: powder-coated, RAL 7035 light-grey.
 - Final digit of order number .8: powder-coated, RAL 7021 dark-grey.

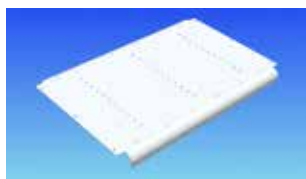
- **Scope of delivery**
 - 2 x mounting brackets.
 - 1 x Mounting kit.

- **How supplied**
 - In sets.

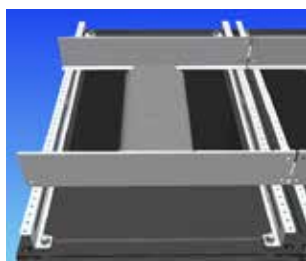
| W / L | H | For rack type | Order No. | UP |
|-------|----|---------------|--------------|-------|
| 300 | 90 | MIR2 / DCM | 05.045.011.X | 1 set |
| 600 | 90 | MIR2 / DCM | 05.045.012.X | 1 set |
| 800 | 90 | MIR2 / DCM | 05.045.013.X | 1 set |
| 2400 | 90 | MIR2 / DCM | 05.045.015.X | 1 set |
| 3000 | 90 | MIR2 / DCM | 05.045.016.X | 1 set |

C

Center panel insert



MEC20205



MEC20204

- Secured on mounting bracket.
- Quick and easy mounting.
- With 25 mm radius for bending the cables.

- **Material**
 - Sheet steel, 1.5 mm.

- **Finish**
 - Final digit of order number .1: powder-coated, RAL 7035 light-grey.
 - Final digit of order number .8: powder-coated, RAL 7021 dark-grey.

- **Scope of delivery**
 - 1 x center panel insert.
 - 1 x Mounting kit.

- **How supplied**
 - In sets.

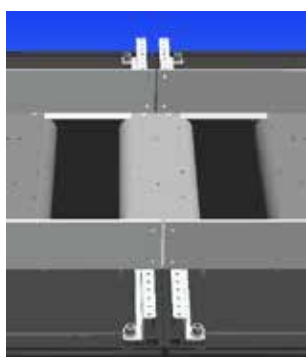
| W / L | W _{Rack} | R | For rack type | Order No. | UP |
|-------|-------------------|----|---------------|--------------|-------|
| 200 | 600 | 25 | MIR2 / DCM | 05.045.021.X | 1 set |
| 600 | 600 | 25 | MIR2 / DCM | 05.045.022.X | 1 set |
| 200 | 800 | 25 | MIR2 / DCM | 05.045.023.X | 1 set |
| 600 | 800 | 25 | MIR2 / DCM | 05.045.024.X | 1 set |

D

Transitional cover from rack to rack



MEC20206



MEC20212

- Secured on support bracket.
- Quick and easy mounting.
- With 25 mm radius for bending the cables.

- **Material**
 - Sheet steel, 1.5 mm.

- **Finish**
 - Final digit of order number .1: powder-coated, RAL 7035 light-grey.
 - Final digit of order number .8: powder-coated, RAL 7021 dark-grey.

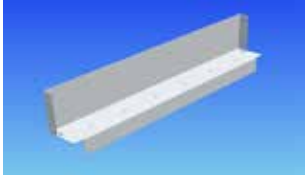
- **Scope of delivery**
 - 1 x transitional cover.
 - 1 x Mounting kit.

- **How supplied**
 - In sets.

| W / L | R | For rack type | Order No. | UP |
|-------|----|---------------|--------------|-------|
| 200 | 25 | MIR2 / DCM | 05.045.031.X | 1 set |
| 600 | 25 | MIR2 / DCM | 05.045.032.X | 1 set |

E

End panel insert



MEC20207

- Secured on support bracket.
- Quick and easy mounting.
- Completes cable trays.

Material

- Sheet steel 1.0 mm.

Finish

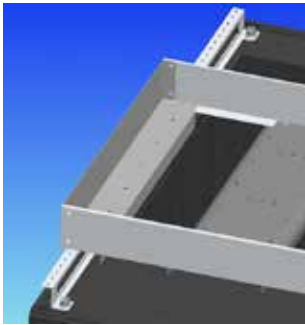
- Final digit of order number .1: powder-coated, RAL 7035 light-grey.
- Final digit of order number .8: powder-coated, RAL 7021 dark-grey.

Scope of delivery

- 2 x end panel inserts.
- 1 x Mounting kit.

How supplied

- In sets.



MEC20214

| W / L | For rack type | Order No. | UP |
|-------|---------------|--------------|-------|
| 200 | MIR2 / DCM | 05.045.041.X | 1 set |
| 600 | MIR2 / DCM | 05.045.042.X | 1 set |

F

Connecting panel insert



MEC20208

- For joining mounting brackets.
- Quick and easy mounting.

Material

- Sheet steel, 1.5 mm.

Finish

- Final digit of order number .1: powder-coated, RAL 7035 light-grey.
- Final digit of order number .8: powder-coated, RAL 7021 dark-grey.

Scope of delivery

- 10 x connecting panel inserts.
- 1 x Mounting kit.

How supplied

- In sets.



MEC20213

| W | H | For rack type | Order No. | UP |
|----|----|---------------|--------------|-------|
| 64 | 86 | MIR2 / DCM | 05.045.045.X | 1 set |

G

Cover plate



MEC20209

- For covering the space between the center panel inserts and transitional covers.
- Quick and easy mounting.

Material

- Sheet steel 1.0 mm.

Finish

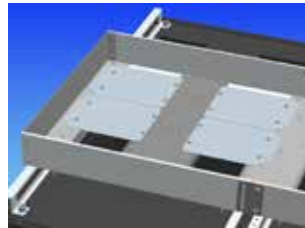
- Final digit of order number .1: powder-coated, RAL 7035 light-grey.
- Final digit of order number .8: powder-coated, RAL 7021 dark-grey.

Scope of delivery

- 10 x cover plates.
- 1 x Mounting kit.

How supplied

- In sets.



MEC20215

| L | W | For rack type | Order No. | UP |
|-----|-----|---------------|--------------|-------|
| 229 | 183 | MIR2 / DCM | 05.045.047.X | 1 set |

Option

Mesh cable tray



MEC20218

- Secured on support bracket.
- Quick and easy mounting.

Material

- Round steel, d = 4.5 mm.

Finish

- Zinc-passivated.

Scope of delivery

- 1 x mesh cable tray.
- 1 x Mounting kit.

How supplied

- In sets.

| B | L | H | For rack type | Order No. | UP |
|-----|------|----|---------------|--------------|-------|
| 200 | 3000 | 54 | MIR2 / DCM | 05.045.061.9 | 1 set |
| 600 | 3000 | 54 | MIR2 / DCM | 05.045.062.9 | 1 set |

Dimensions in mm:

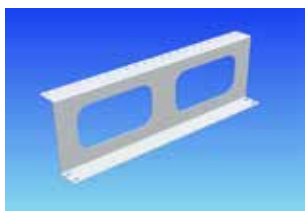
| | | | |
|------------|-------------------------|------------------------|-------------|
| W = Width | h = Installation height | U = Standard rack unit | kg = Weight |
| H = Height | d = Insertion depth | (1 U = 44.45 mm) | |
| D = Depth | L = Length | UP = Packaging unit | |

Conversion:

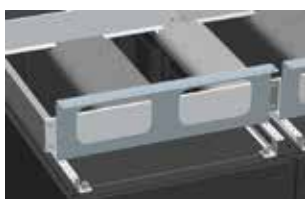
| |
|----------------------|
| 1 mm = 0.03937 inch |
| 1 kg = 2.2046 pounds |

H

Support bracket Cross-cabling



MEC20210



MEC20216

- For cable management at the top between rack suites.
- Quick and easy mounting.
- Includes screw for securing the mounting brackets, transitional covers and cover plates.

Material
- Sheet steel 2.0 mm.

Finish
- Final digit of order number .1:
powder-coated, RAL 7035 light-grey.
- Final digit of order number .8:
powder-coated, RAL 7021 dark-grey.

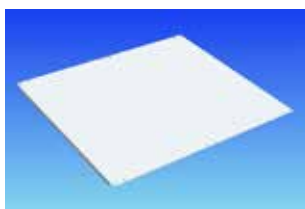
Scope of delivery
- 2 x support brackets, cross-cabling.
- 1 x Mounting kit.

How supplied
- In sets.

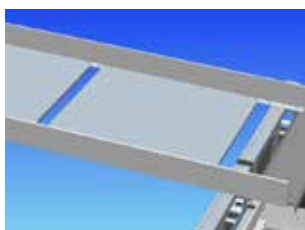
| H | W _{Rack} | For rack type | Order No. | UP |
|-----|-------------------|---------------|--------------|-------|
| 166 | 600 | MIR2 / DCM | 05.045.052.X | 1 set |
| 166 | 800 | MIR2 / DCM | 05.045.053.X | 1 set |

I

Cross-cabling Cover



MEC20211



MEC20217

- Provides support for cables and covers the space between the rack suites.
- Secured on mounting bracket.
- Quick and easy mounting.

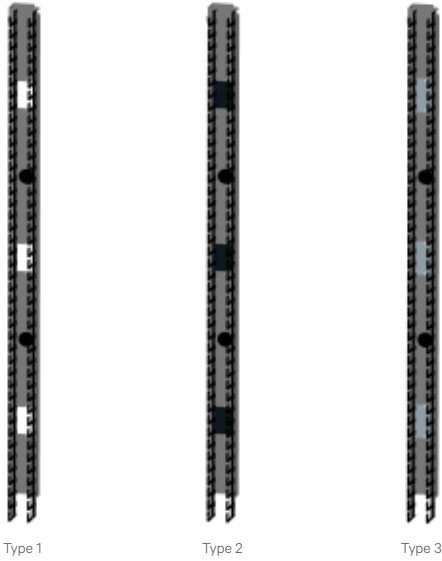
Material
- Sheet steel 1.0 mm.

Finish
- Final digit of order number .1:
powder-coated, RAL 7035 light-grey.
- Final digit of order number .8:
powder-coated, RAL 7021 dark-grey.

Scope of delivery
- 5 x cover plates.
- 1 x Mounting kit.

How supplied
- In sets.

| L | W | For rack type | Order No. | UP |
|-----|-----|---------------|--------------|-------|
| 200 | 200 | MIR2 / DCM | 05.045.055.X | 1 set |
| 200 | 600 | MIR2 / DCM | 05.045.056.X | 1 set |
| 600 | 600 | MIR2 / DCM | 05.045.057.X | 1 set |



Type 1 Type 2 Type 3

Vertiv™ Knürr® Cable Management

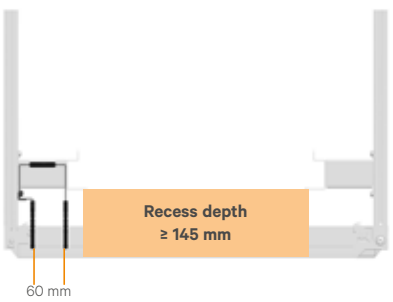
- **Features**
 - Organized cabling of jumper cables.
 - Suitable depends on the model, for 19" Vertiv Knürr, DCM® and MIR2® Racks.
 - Also available optionally as cold/warm partitioning.
 - Cutouts for cabling from front to back.
 - Lightweight plastic construction of the cable fingers ensures durability and simple installation (clip-on).
 - Distance between fingers provides sufficient space for all patch cords.
 - Rounded edges on the fingers protect cables against damage.

Cable manager models

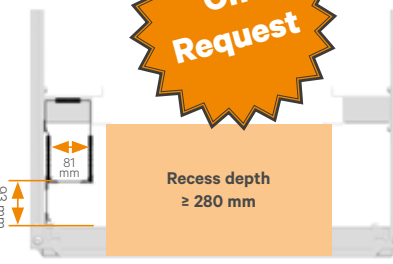
- **Type 1:** Standard (open cutouts).
- **Type 2:** Version with brush strips in cutouts for cable routing towards the rear.
- **Type 3:** Version with sheet-steel cover plates in cutouts as part of the cold/warm partitioning.

Technical data and required recess depths

Vertiv Knürr DCM



Vertiv Knürr DCM



Vertiv Knürr MIR2



Vertiv™ Knürr® DCM cable manager, vertical



DCM2018



DCM2019

Description

- **Left and right models (2 cable managers) included in the delivery.**
- Ideal for organizing cabling of jumper cables (copper and fiber optic cables).
- Retrofitting is possible.
- Prepared for full cold/warm partitioning.
- Cable fingers can be easily installed (clipped on).
- Cabling towards the rear through rubber bushings or cutouts.
- **Can be used for recess depths from 145 mm.**

Material / Finish

- Cable duct: Sheet steel, 2.0 mm.
- Final digit of order number .1: powder-coated, RAL 7035 light-grey.
- Final digit of order number .8: powder-coated, RAL 7021 dark-grey.
- Cable fingers: Polyamide (UL 94 V-0), black.

Scope of delivery

- 1 x cable duct, left.
- 1 x cable duct, right.
- 4 x rows with cable fingers.
- 4 x rubber bushings.
- 1 x Mounting kit.

How supplied

- In pairs (cable fingers unassembled).

Remarks

- Only for DCM Rack.

| W _{Rack} | H _{Rack} | U | Recess depth | Cutout size | Order No. | UP |
|-------------------|-------------------|----|----------------------|-------------|---------------------|--------|
| 800 | 2000 | 42 | Starting from 145 mm | 66 x 100 mm | 05.045.102.X | 1 pair |
| 800 | 2200 | 47 | Starting from 145 mm | 66 x 100 mm | 05.045.103.X | 1 pair |



DCM20120



DCM20121

DCM cover panel for vertical cable manager

- **For only 1 cable manager, i. e., 2 kits required for B800 rack.**
- Covers the vertical cable manager.
- Tool-less fastening – clips onto cable finger.
- Can be swiveled on both sides and removed completely.

Material / Finish

- Cover: sheet steel, 2.0 mm.
- Final digit of order number .1: powder-coated, RAL 7035 light-grey.
- Final digit of order number .8: powder-coated, RAL 7021 dark-grey.
- Clip: polyamide (UL 94 V-0), black.

Scope of delivery

- 2 x covers.
- 8 x clips.

How supplied

- In sets (clips pre-assembled).

| W | H | U | Order No. | UP |
|----|------|----|---------------------|-------|
| 55 | 927 | 42 | 05.045.112.X | 1 set |
| 55 | 1038 | 47 | 05.045.113.X | 1 set |



DCM20117

DCM/MIR2 kit for air partitioning for vertical cable manager

- **Suitable for DCM and MIR2 racks.**
- Separates the cold and hot areas within the rack.
- Prevents hot-spots (air recirculation).

Material / Finish

- Bottom plate, cover plate: sheet steel, 1.0 mm.
- Final digit of order number .1: powder-coated, RAL 7035 light-grey.
- Final digit of order number .8: powder-coated, RAL 7021 dark-grey.
- High-density foam: PUR foam (UL94 HF-1).

Scope of delivery

- 1 x bottom plate.
- 6 x Steel plate cover plates (extension to Type3) for cable routing.
- 1 x Foam element, side.
- 1 x Foam element, top.
- 1 x Mounting kit.

How supplied

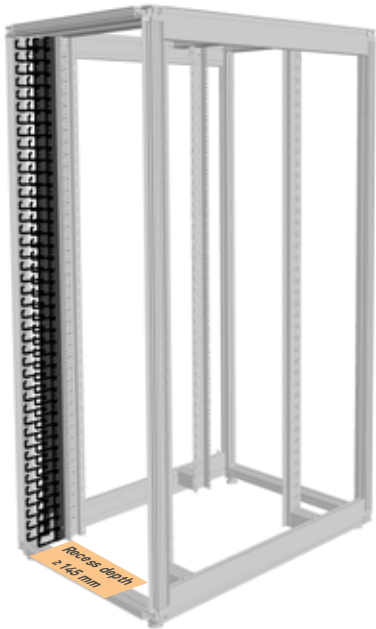
- In sets.

Remarks

- For DCM and MIR2 Rack.

| W _{Rack} | U | Order No. | UP |
|-------------------|-----------|---------------------|-------|
| 800 | 42 and 47 | 05.045.132.X | 1 set |

Vertiv™ Knürr® MIR2 – Cable Manager, Vertical



Left and right models (2 cable managers) included in the delivery.

- Ideal for organizing cabling of jumper cables (copper and fiber optic cables).
- Retrofitting is possible.
- Prepared for full cold/warm partitioning.
- Cable fingers can be easily installed (clipped on).
- Cabling towards the rear through rubber bushings or cutouts.

Can be used for recess depths from 145 mm.

Material / Finish

- Cable duct: Sheet steel, 2.0 mm.
Final digit of order number .1:
powder-coated, RAL 7035 light-grey.
Final digit of order number .8:
powder-coated, RAL 7021 dark-grey.
- Cable fingers: Polyamide (UL 94 V-0), black.

Standard inclusion

- 1 x cable duct, left.
- 1 x cable duct, right.
- 4 x rows with cable fingers.
- 4 x rubber bushings.
- 1 x Mounting kit.

Delivery

- In pairs (cable fingers unassembled).

Note

- For MIR2 only.
- Only front mountable.

| W Rac | H Rac | D | U | Recess depth | Cutout size | Order No. | Up |
|-------|-------|----|---|----------------------|-------------|---------------------|--------|
| 800 | 2000 | 42 | | Starting from 145 mm | 81 x 100 mm | 05.045.152.x | 1 pair |
| 800 | 2200 | 47 | | Starting from 145 mm | 81 x 100 mm | 05.045.153.x | 1 pair |

Vertiv Knürr MIR2 – Cover Panel for Vertical Cable Manager



For only 1 cable manager, i. e., 2 kits required for B800 rack.

- Covers the vertical cable manager.
- Tool-less fastening – clips onto cable finger.
- Can be swiveled on both sides and removed completely.

Material / Finish

- Cover: sheet steel, 2.0 mm.
Final digit of order number .1:
powder-coated, RAL 7035 light-grey.
Final digit of order number .8:
powder-coated, RAL 7021 dark-grey.
- Clip: polyamide (UL 94 V-0), black.

Standard inclusion

- 2 x covers.
- 8 x clips.

Delivery

- In sets (clips pre-assembled).

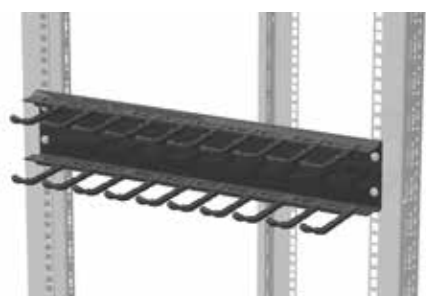
Note

- For MIR2 only.

| W | H | D | U | Order No. | Up |
|----|-----|----|---|---------------------|-------|
| 55 | 927 | 42 | | 05.045.114.x | 1 set |
| 55 | 103 | 47 | | 05.045.115.x | 1 set |



DCM2012



DCM2014

MIR2® / DCM 19" cable manager, horizontal

Description

- 1 U and 2 U models.
- For organized cabling of jumper cables (copper and fiber optic cables).
- Front-mounting on 19" extrusions.
- Cable fingers can be easily installed (clipped on).
- **Can be used for recess depths from 145 mm.**

Scope of delivery

- 1 x cable duct.
- 2 x rows with cable fingers.
- 1 x Mounting kit.

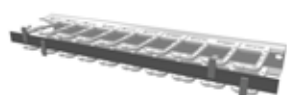
How supplied

- In sets (cable fingers unassembled).

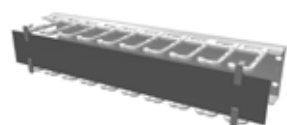
Material / Finish

- Cable duct: sheet steel, 2.0 mm.
- Final digit of order number .1: powder-coated, RAL 7035 light-grey.
- Final digit of order number .8: powder-coated, RAL 7021 dark-grey.
- Cable fingers: polyamide (UL 94 V-0), black.

| W | U | Recess depth | Order No. | UP |
|-----|---|----------------------|---------------------|--------|
| 483 | 1 | Starting from 145 mm | 05.045.120.X | 1 unit |
| 483 | 2 | Starting from 145 mm | 05.045.122.X | 1 unit |



DCM2013



DCM2015

MIR2 / DCM Cover for 19" horizontal cable manager

- Covers the horizontal cable managers.
- Tool-less fastening – clips onto cable finger.
- Can be swiveled on both sides and removed completely.

Material / Finish

- Cover: sheet steel, 2.0 mm.
- Final digit of order number .1: powder-coated, RAL 7035 light-grey.
- Final digit of order number .8: powder-coated, RAL 7021 dark-grey.
- Clip: polyamide (UL 94 V-0), black.

Scope of delivery

- 1 x cover.
- 4 x clips.

How supplied

- In sets (clips pre-assembled).

| W | H | U | Order No. | UP |
|-----|----|---|---------------------|-------|
| 483 | 20 | 1 | 05.045.121.X | 1 set |
| 483 | 65 | 2 | 05.045.123.X | 1 set |



MIR20093



DCM2012

MIR2 / DCM Brush strips for vertical cable manager (Typ2)

- Upgrade kit for vertical cable manager for routing cables toward the rear (for extension to Typ 2).
- Inserted in openings in cable duct (1 pair of brushes per opening).

Scope of delivery

- 3 x pairs of brushes (length: 99 mm).

How supplied

- In sets.

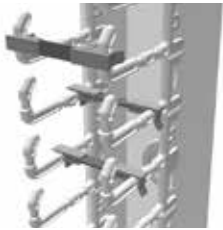
| L | for cutouts | Order No. | UP |
|----|-------------|---------------------|-------|
| 99 | 66 x100 mm | 05.045.130.9 | 1 set |

Dimensions in mm:

| | | | |
|------------|-------------------------|------------------------|-------------|
| W = Width | h = Installation height | U = Standard rack unit | kg = Weight |
| H = Height | d = Insertion depth | (1 U = 44.45 mm) | |
| D = Depth | L = Length | UP = Packaging unit | |

Conversion:

| | |
|------|-----------------|
| 1 mm | = 0.03937 inch |
| 1 kg | = 2.2046 pounds |



DCM20116

DCM kit for cascading; vertical cable manager

- Separates individual cable groups.
- Tool-less fastening – clips onto cable finger.
- Protects the cables and can be used for labeling.

Material / Finish

- Cascade: sheet steel, 2.0 mm.
- Powder-coated texture, RAL 7021 dark-grey.
- Clip: polyamide (UL 94 V-0), black.

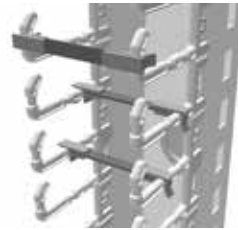
Scope of delivery

- 10 x cascades.
- 20 x clips.

How supplied

- In sets (clips pre-assembled).

| W | H | Order No. | UP |
|----|----|--------------|-------|
| 55 | 10 | 05.045.136.8 | 1 set |



MIR20454

MIR2 kit for cascading; vertical cable manager

- For separating individual cable groups.
- Tool-less fastening – clips onto cable finger.
- Protects the cables and can be used for labeling.

Material / Finish

- Cascade: sheet steel, 2.0 mm. Powder-coated texture, RAL 7021 dark-grey.
- Clip: polyamide (UL 94 V-0), black.

Scope of delivery

- 10 x cascades.
- 20 x clips.

How supplied

- In sets (clips pre-assembled).

| W | H | Order No. | UP |
|----|----|--------------|-------|
| 76 | 10 | 05.045.137.8 | 1 set |



MEC00110

Type 1

19" cable routing board 1 U

- For orderly cable routing.
- Enables safe and secure cable routing of copper and fiberglass cables.

Material / Finish

- Type 1: Front plate, sheet steel, 1.5 mm, powder coated.
- Type 2: Front plate, sheet steel, 1.0 mm, powder coated.

Color

- Final digit of order number .1: RAL 7035, light grey.
- Final digit of order number .8: RAL 7021 dark-grey.

External dimensions

- Cable routing:
- Type 1: 55 x 22 mm, plastic.
- Type 2: 95 x 32 mm, steel.

Scope of delivery

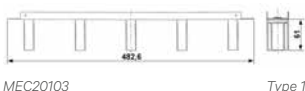
- 1 x 19" front plate.
- 5 x cable routers.

How supplied

- Pre-assembled

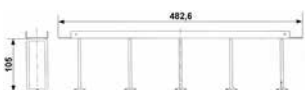
Note

Please also order mounting material for front plates.



MEC20103

Type 1



MEC20104

Type 2



MEC20041

19" cable routing board, flexible, 1 U

- For orderly cable routing.
- Enables safe and secure cable routing of copper and fiberglass cables.

Material / Finish

- Front plate, sheet steel, 1.5 mm, powder coated.
- Cable routing bracket, round steel, d = 5 mm, zinc-passivated.

Color

- Final digit of order number .1: RAL 7035, light grey.
- Final digit of order number .8: RAL 7021 dark-grey.

External dimensions

- Cable routers (a x b):
- 1 U: 82 x 43 mm.
- 2 U: 102 x 82 mm.

Scope of delivery

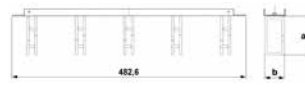
- 1 x front plate.
- 5 x cable routing boards.

How supplied

- Pre-assembled.

Note

Please also order mounting material for front plates.



MEC20102



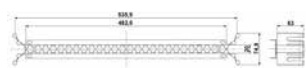
MEC20076

| W | U | Jumpering space | Model | Order No. | UP |
|-----|---|-----------------|--------|--------------|--------|
| 483 | 1 | from 80 mm | Type 1 | 05.040.111.1 | 1 unit |
| 483 | 1 | from 80 mm | Type 1 | 05.040.111.X | 1 unit |
| 483 | 1 | from 123 mm | Type 2 | 01.117.144.X | 1 unit |

| W | U | Jumpering space | Model | Order No. | UP |
|-----|---|-----------------|--------|--------------|--------|
| 483 | 1 | from 100 mm | Type 1 | 05.040.100.X | 1 unit |
| 483 | 2 | from 120 mm | Type 2 | 05.040.101.X | 1 unit |



MEC20081



MEC20105



MEC20058

Fiber optic cable routing panel 1U

- For orderly cable routing.
- Enables safe and secure cable routing of fiber optic cables.
- Optionally with cover plates to protect the cables and can be used for labeling.

Material / Finish

- Fiber optic cable routing panel: Sheet steel 1,5mm, powder-coated texture.
- Cover Accessories: Aluminium 2,5mm, powder-coated texture.

Color

- Final digit of order number .1: RAL 7035, light grey.
- Final digit of order number .8: RAL 7021 dark-grey.

Scope of delivery

- 1 x 19" cable routing board.

How supplied

- Single items.

Note

Please also order mounting material for front plates and cover.
Not suitable for rack widths of 600 mm and 700 mm (asymmetrical).

| W | U | Model | Order No. | UP |
|-----|---|---------------------|--------------|--------|
| 483 | 1 | Cable routing board | 05.040.050.1 | 1 unit |
| 483 | 1 | Cable routing board | 05.040.050.X | 1 unit |
| | | Accessories: cover | 05.040.051.X | 1 unit |



MEC20049

19" cable through

- For organized cable management at the 19" front plate.
- Mounting possible on front plates.
- Cables can be fastened with Velcro.

Material / Finish

- Sheet steel, 1,5 mm, powder-coated texture.

Color

- Final digit of order number .1: RAL 7035, light grey.
- Final digit of order number .8: RAL 7021 dark-grey.

Scope of delivery

- 1 x cable through.

How supplied

- Single items.

Note

Please also order mounting material for front plates and Velcro rolls.

| W | D | U | Order No. | UP |
|-----|-----|---|--------------|--------|
| 483 | 100 | 1 | 05.040.055.X | 1 unit |



MEC20224

Cable trough

- For orderly cable management in the MIR2 and DCM racks.
- Cables secured with Velcro strips or cable ties.
- 9 mm slit width for securing various parts to caged nuts.

Material / Finish

- Sheet steel, 1,5 mm, zinc passivated, powder-coated.

Color

- Final digit of order number .1: RAL 7035 light grey.
- Final digit of order number .8: RAL 7021, dark-grey.

Scope of delivery

- 1 x cable trough.
- 1 x Mounting kit.

How supplied

- In sets.

Note

If required, please also order Velcro rolls.



MEC20067

| H | w | Model | Order No. | UP |
|------|-----|------------------------|--------------|-------|
| 2000 | 100 | For MIR2 and DCM racks | 05.040.251.X | 1 set |
| 2200 | 100 | For MIR2 and DCM racks | 05.040.252.X | 1 set |
| 2000 | 150 | For MIR2 and DCM racks | 05.040.254.X | 1 set |
| 2200 | 150 | For MIR2 and DCM racks | 05.040.255.X | 1 set |
| 2000 | 200 | For MIR2 and DCM racks | 05.040.257.X | 1 set |
| 2200 | 200 | For MIR2 and DCM racks | 05.040.258.X | 1 set |



MEC00114

Cable clamping bar

- Clips onto the C extrusion rail.

Material

- Polyamide, black.

Scope of delivery

- 1 set of 10 cable clamping bars.

How supplied

- In sets.

| Order No. | UP |
|--------------|----------|
| 01.130.869.9 | 10 units |

- assemble to order (shipped within 5 working days).
Caution: In case of larger orders, delivery times may increase.

| Dimensions in mm: | | | | Conversion: | |
|-------------------|-------------------------|------------------------|-------------|----------------------|--|
| W = Width | h = Installation height | U = Standard rack unit | kg = Weight | 1 mm = 0.03937 inch | |
| H = Height | d = Insertion depth | (1U = 44.45 mm) | | 1 kg = 2.2046 pounds | |
| D = Depth | L = Length | UP = Packaging unit | | | |



MIR00096

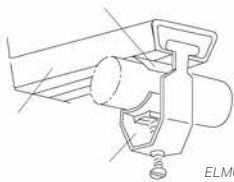
U clamp

- Reduces cabling strain and permits individual routing of cables and lines.
- Clamping range, 8–64 mm.

- **Material**
 - Steel / plastic.

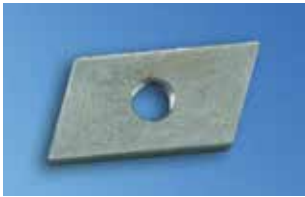
- **Scope of delivery**
 - 25 x U clamps.
 - 25 x clamping saddles.

- **How supplied**
 - In sets.



ELM00086

| Clamping range | Order No. | UP |
|----------------|--------------|--------|
| 8–12 mm | 05.040.150.9 | 1 unit |
| 12–16 mm | 05.040.151.9 | 1 unit |
| 16–22 mm | 05.040.152.9 | 1 unit |
| 22–28 mm | 05.040.154.9 | 1 unit |
| 34–40 mm | 05.040.155.9 | 1 unit |
| 46–52 mm | 05.040.157.9 | 1 unit |



MEC20051

M5 threaded plate

- Used with C extrusion rails.

- **Material / Finish**
 - Flat rolled steel, 4,0 mm, zinc passivated.

- **Scope of delivery**
 - 20 x threaded plates.

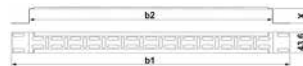
- **How supplied**
 - In sets.

| Order No. | UP |
|--------------|-------|
| 05.040.077.9 | 1 set |



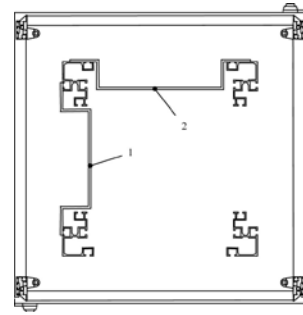
MEC20136

Type 1



MEC20120

Type 1



MIR00094

Assembly crossbar

- Cable management with Velcro strips.
- Universal mounting option for installation accessories, socket strips, telecommunication installation units, mounting panels, etc.
- For side and cross installation.

- **Material / Finish**
 - Sheet steel 1,5 mm, powder-coated texture.

- **Color**
 - Final digit of order number .1: RAL 7035 light-grey.
 - Final digit of order number .8: RAL 7021 dark-grey.

- **Scope of delivery**
 - 1 x assembly crossbar.

- **How supplied**
 - Single items.

- **Note**
 - Please also order the appropriate mounting material.

| W/d | U | w1 | w2 | X | Type | Model | Order No. | UP |
|-----|---|-----|-------|-----|------|------------------------------|--------------|--------|
| 19" | 1 | 482 | 442,6 | 815 | 1 | Pos. 2: MIR2 / DCM / Smaract | 05.040.018.X | 1 unit |



MEC20042

Cable through between the racks

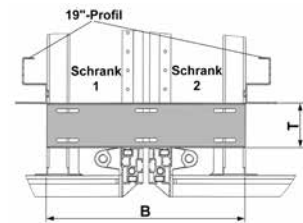
- For orderly cable routing between linked racks, adjacent racks.
- Velcro strips can be used for fastening.

- **Material / Finish**
 - Sheet steel, 1,5 mm.
 - Powder-coated texture, RAL 7035 light-grey.

- **Scope of delivery**
 - 1 x cable through.
 - 1 x Mounting kit.

- **How supplied**
 - In sets.

- **Note**
 - Please also order Velcro rolls.



MEC20119

| W | D | Order No. | UP |
|-----|----|--------------|--------|
| 265 | 60 | 05.040.058.1 | 1 unit |



MEC20047

FOC 19" excess cable drawer, 1 U

- For storing excess fiber optic cable.
- Pull-out.
- Cables can be fastened with Velcro.

- **Material / Finish**
 - Sheet steel, 1.5 mm.

- **Color**
 - Final digit of order number .1: RAL 7035 light-grey.
 - Final digit of order number .8: RAL 7021 dark-grey.

- **Scope of delivery**
 - 1 x unit.
 - 1 x drawer.

- **How supplied**
 - In sets.

- **Note**
 - Please also order mounting material for front plates and Velcro rolls.



MEC20099

| W | H | D | Order No. | UP |
|-----|----|-----|--------------|-------|
| 483 | 44 | 350 | 05.040.047.X | 1 set |



MEC20044

Excess fiber optic cable storage

- For orderly cable routing of Fiber optic cables in Miracel rack (from B 800 mm).
- For storing excess cable.

- **Material / Finish**
 - Base plate: powder-coated texture.
 - Cable routing head: polyamide, black.

- **Color**
 - Final digit of order number .1: RAL 7035 light-grey.
 - Final digit of order number .8: RAL 7021 dark-grey.

- **Scope of delivery**
 - 1 x base plate.
 - 1 x cable routing head.
 - 1 x Mounting kit.

- **How supplied**
 - In sets.



MEC20146

| U | Order No. | UP |
|---|--------------|-------|
| 2 | 05.040.041.X | 1 set |



MEC20038

Universal cable routing bracket

- Used for extrusion distance (from front) 123 mm and 73 mm.
- For organized cable management.
- Open version, no threading.
- Mounting on the external side of the 19" extrusion.
- Any installation position selectable.

- **Material**
 - Round steel, d = 6 mm.

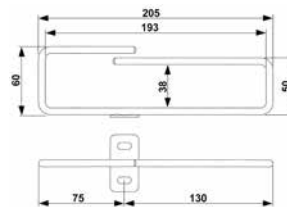
- **Finish**
 - Zinc-passivated.

- **Scope of delivery**
 - 4 x cable routing brackets.
 - 1 x Mounting kit.

- **How supplied**
 - In sets.



MEC20072



MEC20106

| W _{Rack} | For rack type | Order No. | UP |
|-------------------|---------------|--------------|-------|
| from 800 | MIR2 / DCM | 05.040.220.9 | 4 Stk |



MEC20039

Square cable routing bracket

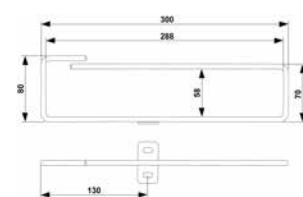
- For orderly cable management.
- Open version, no threading.
- Mounted on the external side of the 19" extrusion.
- Any installation position selectable.
- For high cable density.

- **Material**
 - Round steel, d = 6 mm.

- **Finish**
 - Zinc-passivated.

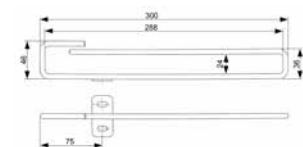
- **Scope of delivery**
 - 4 x square cable routing brackets.
 - 1 x Mounting kit.

- **How supplied**
 - In sets.



MEC20107

Type 1

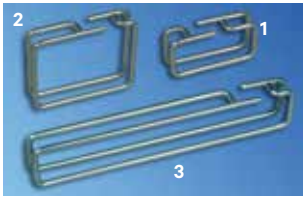


MEC20116

Type 2

| W _{Rack} | Type | For rack type | Order No. | UP |
|-------------------|--------|---------------|--------------|---------|
| from 800 | Type 1 | MIR2 / DCM | 05.040.221.9 | 4 units |
| from 700 | Type 2 | MIR2 / DCM | 05.040.222.9 | 4 units |
| 600 | Type 2 | Smaract | 05.040.222.9 | 4 units |

- assemble to order (shipped within 5 working days).
Caution: In case of larger orders, delivery times may increase.



MEC20035

MIR2/DCM Cable routing bracket, flexible

- Enables flexible and organized cable routing.
- Can be easily installed in various positions within the rack.
- Open version, no threading.

Material
- Round steel, d = 5 mm.

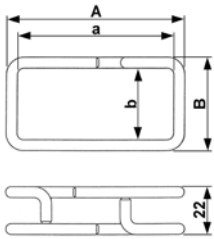
Finish
- Zinc-passivated.

Scope of delivery
- 10 x cable routing brackets.
- 1 x Mounting kit.

How supplied
- In sets.



MEC20065



MEC20108

| A | a | W | w | Model | Order No. | UP |
|-----|-----|----|----|-------|--------------|-------------------|
| 82 | 72 | 43 | 33 | Fig.1 | 05.040.231.9 | 10 units |
| 222 | 212 | 30 | 20 | Fig.3 | 05.040.232.9 | 10 units |
| 102 | 92 | 82 | 72 | Fig.2 | 05.040.233.9 | 10 units P |



ELM00117

Square cable routing bracket

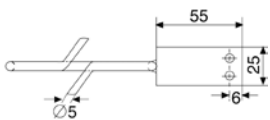
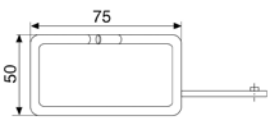
- For organized cable management.
- Open version, no threading.
- Mounted on the external lateral T-slot of the 19" extrusion.
- Any installation position selectable.

Material
- Round steel, d = 5 mm.

Finish
- Zinc-passivated.

Scope of delivery
- 4 x cable routing brackets.
- 1 x Mounting kit.

How supplied
- In sets.



ELM00106

| For rack type | Order No. | UP |
|---------------|--------------|---------|
| DoubleProRack | 05.040.226.9 | 4 units |



MIR00564

Cable routing bracket

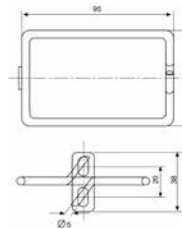
- For organized cable management.
- Open version, no threading.

Material/Oberfläche
- Round steel, d = 5 mm.

Finish
- Zinc-passivated.

Scope of delivery
- 4 x cable routing brackets.
- 1 x Mounting kit.

How supplied
- In sets.



MEC00122

| Model | For rack type | Order No. | UP |
|---------|---------------|--------------|---------|
| 95 x 60 | MIR2 / DCM | 05.040.225.9 | 4 units |



ELM00028

Section support bracket

- Ideal for vertical routing and reducing cabling strain.
- Open version, no threading.
- Mounted on the external lateral T-slot of the 19" extrusion.
- Any installation position selectable.
- From rack width 600 mm.

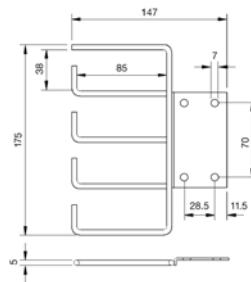
Material / Finish
- Round steel, d = 5 mm, zinc-passivated.

Scope of delivery
- 2 x section support brackets.

How supplied
- In sets.

Note
Please also order the appropriate mounting material.

Z56-1/FH



ELM00029

| Model | Order No. | UP |
|----------------------------|--------------|------------------|
| MIR2 / DCM / Smaract / DPR | 01.117.033.7 | 2 units P |

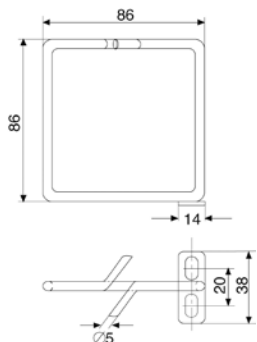
| Dimensions in mm: | | | | Conversion: |
|-------------------|-------------------------|------------------------|-------------|----------------------|
| W = Width | h = Installation height | U = Standard rack unit | kg = Weight | 1 mm = 0.03937 inch |
| H = Height | d = Insertion depth | (1 U = 44.45 mm) | | 1 kg = 2.2046 pounds |
| D = Depth | L = Length | UP = Packaging unit | | |



MIR00183

Cable routing bracket, square

- For organized cable management.
- Open version, no threading.
- Mounted on the external lateral T-slot of the 19" extrusion.
- Any installation position selectable.
- From rack width 800 mm.



ELM00057

Material

- Zinc-passivated, Zn 10c, white.

Scope of delivery

- 4 x vertical cable routing brackets.
- 1 x Mounting kit.

How supplied

- In sets.

| W _{Rack} | Model | For rack type | Order No. | UP |
|-------------------|---------|-----------------|--------------|---------|
| from 800 | 86 x 86 | Miracel 2 / DCM | 05.040.224.9 | 4 units |



ELM20008

Cable routing ring

- For organized cable management.
- Open version, no threading.
- Secured on the T-slots of the vertical extrusions.
- Any installation position selectable.

Material / Finish

- PA 6, GF 15, black, UL 94-HB.

Scope of delivery

- 5 x cable routing rings.
- 1 x Mounting kit.

How supplied

- In sets.



ELM20007

| Model | For rack type | Order No. | UP |
|-------------|----------------------|--------------|---------|
| 54 x 118 mm | MIR2 / DCM / Smaract | 01.312.207.9 | 5 units |



MEC20185

Quick-Strip ties for T-slot Tool-less mounting

- Quick tool-less securing.
- For bundling cables.
- Can be unfastened and reused.
- For organized cable management.
- Can be fitted into T-slots in any position.

Material

- Polyethylene and nylon.
- F.R.T., UL-94 HB.

Color

- Black.

Scope of delivery

- 10 x Quick-Strip Velcro ties.

How supplied

- In sets.



MEC20186

| For rack type | Order No. | UP |
|---------------|--------------|-------|
| MIR2 / DCM | 00.218.506.0 | 1 set |



MEC20187

Quick-Clamp plastic cable routing bracket for T-slot mounting without tools

- Quick tool-less securing.
- For organized cable management.
- Open version, no threading.
- Secures T-slots in any position.

Material

- Nylon.
- F.R.T., UL-94 HB.

Color

- Black.

Scope of delivery

- 10 x plastic cable routing brackets.

How supplied

- In sets.

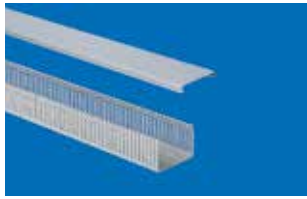


MEC20188

| For rack type | Order No. | UP |
|---------------|--------------|-------|
| MIR2 / DCM | 00.218.505.0 | 1 set |

- assemble to order (shipped within 5 working days).
Caution: In case of larger orders, delivery times may increase.

| Dimensions in mm: | | | | Conversion: |
|-------------------|-------------------------|------------------------|-------------|----------------------|
| W = Width | h = Installation height | U = Standard rack unit | kg = Weight | 1 mm = 0.03937 inch |
| H = Height | d = Insertion depth | (1 U = 44.45 mm) | | 1 kg = 2.2046 pounds |
| D = Depth | L = Length | UP = Packaging unit | | |



ELM00004

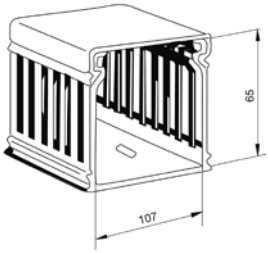
Cable duct

- Ideal for organized and covered cable management of jumper cables.

■ **Material**
- Hard PVC.

■ **Finish**
- Stone-grey RAL 7030.

■ **Scope of delivery**
- 1 x cable duct with cover.
- 1 x Mounting kit.



ELM00052

| L | Order No. | UP |
|------|--------------|--------|
| 2000 | 01.117.098.3 | 1 unit |



MEC20158

Cable routing ring

- For organized cable management.
- Dimensions:
Exterior 61 mm x 42.5 mm.
Interior 52 mm x 23 mm.

■ **Material / Finish**
- Cable support: PPO, similar to RAL 7035 light-grey.
- Soft rubber extrusion: EPDM, similar to RAL 7021 dark-grey.

■ **Scope of delivery**
- 10 x cable routers

■ **How supplied**
- In sets.

■ **Note**
Please also order the appropriate mounting material.

| Model | Order No. | UP |
|----------|--------------|----------|
| Screw-on | 05.040.113.9 | 10 units |



MEC20048

Velcro rolls (by the meter)

- For strain-free fastening and bundling of Cu and fiber optic cables.
- Velcro rolls can be cut to any required length.

■ **Material / Color**
- Black, One-Wrap fastener.
- F.R.T., UL 94-V2.
- Blue: One-Wrap fastener.

■ **Scope of delivery**
- 1 meter or 25 meter Velcro rolls.

■ **How supplied**
Sold by the meter.



MEC20147

| W | L | Model | Order No. | UP |
|----|-------|-------|--------------|-----------|
| 16 | 1000 | Black | 05.040.060.9 | 1 meter |
| 16 | 1000 | Blue | 05.040.061.9 | 1 meter |
| 16 | 25000 | Black | 05.040.065.9 | 25 meters |
| 16 | 25000 | Blue | 05.040.066.9 | 25 meters |



ELM00049

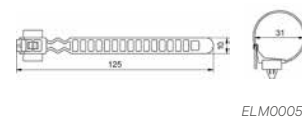
Cable band clip

- For organized cable management.
- For securing harnesses and cables with large cross sections.
- Quick and easy mounting.
- Clips into T-slots in any position.
- Includes releasable clip.

■ **Material**
- PA 6.6, black, UL 94-V0.

■ **Scope of delivery**
- 20 units.

■ **How supplied**
- In sets.



ELM00050

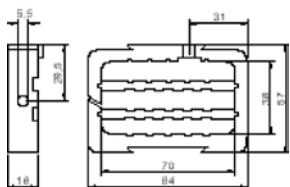
| Order No. | UP |
|--------------|----------|
| 01.240.548.9 | 20 units |



MEC20048

Cable clamping frame

- For organized cable management.
- Open version, no threading.
- Cross-section for cable routing, variable with removable routing ribs.
- Can be expanded by adding on further cable clamping frames.
- Mounting options: lengthwise or across the width.



MEC20147

■ **Material**

- Polypropylene, black.

■ **Scope of delivery**

- 1 x cable clamping frame.
- 1 x Mounting kit.

■ **How supplied**

- In sets.

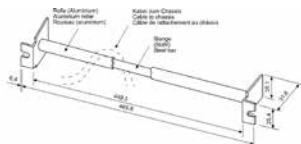
| Order No. | UP |
|--------------|--------|
| 01.113.153.9 | 1 unit |



TEL00034

Cable support bar

- For 19" racks and enclosures.
- Reduces the cable load on slot-in.
- Orders cabling.
- Prevents cable-slack.



TEL00051

■ **Material**

- Sheet steel, 1,5 mm.

■ **Scope of delivery**

- 1 x cable support bar.

| Order No. | UP |
|--------------|--------|
| 05.043.327.9 | 1 unit |

Dimensions in mm:

| | | | | |
|------------|-------------------------|------------------------|-------------|----------------------|
| W = Width | h = Installation height | U = Standard rack unit | kg = Weight | Conversion: |
| H = Height | d = Insertion depth | (1 U = 44.45 mm) | | 1 mm = 0.03937 inch |
| D = Depth | L = Length | UP = Packaging unit | | 1 kg = 2.2046 pounds |