

Vertiv™ Knürr® DoubleProRack®

Stand-Alone Enclosure

Features

- Comprehensive 19" enclosure range from the 6 U enclosure to the 24 U compact rack.
- Innovative design.
- Optional with glass door or without front door.
- Integrated carrying handle permits easy handling.
- Version without front door is used for applications, where direct contact to controls is needed.

Das DoubleProRack® is the choice of rack if an innovative design is requested for electronic and networking applications.

The DoubleProRack is commonly used for electronic and networking applications.



Vertiv™ Knürr® DoubleProRack® 19" Enclosure Compliant with IEC 297-3

Technical data

- Die-cast aluminum frame construction connected with depth and vertical extrusions made of aluminum.
- **External dimensions**
 - Width: 554.4 mm.
 - Depths: 500, 600, 700 or 800 mm.
 - Heights: 6 U to 24 U.
- **Installation space compliant with IEC 297-3.**
 - Height 6 – 24 U (1 U = 44.45 mm).
 - Width 19".
- **Tests**
 - Vibration test compliant with MIL-STD 810 D.
 - NEMA 12 test.

Applications



DOP20041



DOP20025



DOP20037

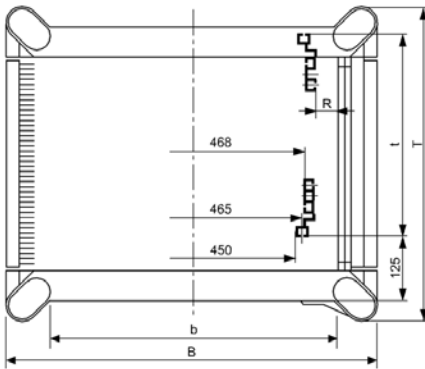
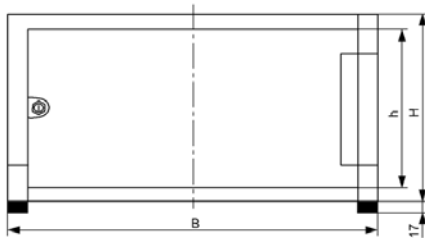


DOP20028

Vertiv™ Knürr® DoubleProRack® 19" Stand-alone Enclosure



DOP00256



DOP00230

Description

- For components compliant with IEC 297-3.
- Side covers and rear panel may be removed.
- Flexible assembly of components using T-slot (also available with mounting holes).
- Cable entry via rear panel.
- Heat loss discharge via convection on the rear panel (optional with fan unit).

Jumpering space

- Front 125 mm.

Load rating

- 1500 N static.

Protection rating

- IP 20.

Material / Finish

- Covers, sheet steel, powder-coated texture.
- Die-cast aluminum frame.
- Extruded aluminum extrusions.
- Front door glass infill, single safety glass panel.

Color

- Panels RAL 7035 light-grey.
- Frame and extrusions, RAL 5008, grey-blue.

Scope of delivery

- 1 x frame rack incl. side covers.
- 1 x full glass door.
- 1 x rear panel with cable entry, 3 parts.
- 1 x panel, above, with vent slots.
- 1 x panel, below, with vent slots.
- 1 x 19" component set (4 vertical extrusions with T-slot).
- 1 x grounding set with M8 grounding bolt.
- 2 x keys.
- 4 x leveling feet.

How supplied

- Assembled.

W	H	D	U	h	d (max.)	Model	Order No.	UP
554.4	311	600	6	265	435	With full glass door	01.246.641.1	1 unit
554.4	444	600	9	399	435	With full glass door	01.246.642.1	1 unit
554.4	577	600	12	532	435	With full glass door	01.246.643.1	1 unit
554.4	711	600	15	666	435	With full glass door	01.246.644.1	1 unit
554.4	844	600	18	799	435	With full glass door	01.246.645.1	1 unit
554.4	978	600	21	932	435	With full glass door	01.246.646.1	1 unit
554.4	1111	600	24	1066	435	With full glass door	01.246.647.1	1 unit
554.4	577	800	12	532	635	With full glass door	01.246.843.1	1 unit
554.4	711	800	15	666	635	With full glass door	01.246.844.1	1 unit
554.4	844	800	18	799	635	With full glass door	01.246.845.1	1 unit
554.4	978	800	21	932	635	With full glass door	01.246.846.1	1 unit
554.4	1111	800	24	1066	635	With full glass door	01.246.847.1	1 unit

Dimensions in mm:				Conversion:	
W = Width	h = Installation height	U = Standard rack unit	kg = Weight	1 mm = 0.03937 inch	
H = Height	d = Insertion depth	(1 U = 44.45 mm)		1 kg = 2.2046 pounds	
D = Depth	L = Length	UP = Packaging unit			

Vertiv™ Knürr® DoubleProRack® 19" Enclosure without Front Door



DOP00253

Description

- For components compliant with IEC 297-3.
- Side covers and rear panel may be removed.
- Heat loss discharge via convection on the rear panel (optional with fan unit).

Load rating

- 1500 N static.

Protection rating

- IP 20.

Material / Finish

- Covers, sheet steel, powder-coated texture.
- Die-cast aluminum frame.
- Extruded aluminum extrusions.

Color

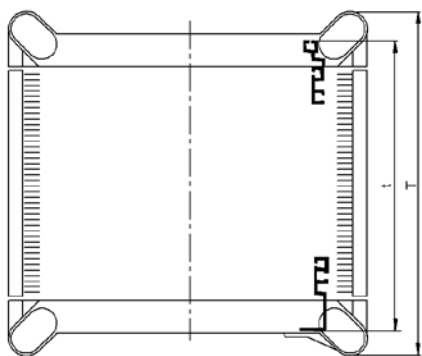
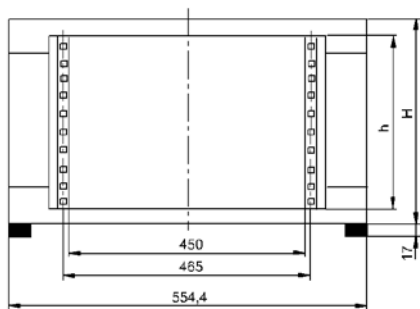
- Panels RAL 7035 light-grey.
- Frame and extrusions, RAL 5008, grey-blue.

Scope of delivery

- 1 x frame rack incl. side covers.
- 1 x panel, above, with vent slots.
- 1 x panel, below, with vent slots.
- 1 x rear panel (from 12 U enclosure height incl. 3 U vented cover plate).
- 2 x 19" extrusions, front, with mounting holes.
- 2 x 19" extrusions at the rear, T-slot.
- 4 x leveling feet.

How supplied

- Assembled.



DOP00052

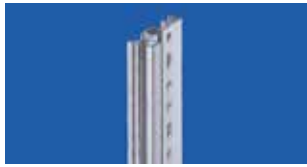
W	H	D	U	h	d (max.)	kg	Model	Order No.	UP
554.4	311	500	6	265	460	12.5	Without door	01.243.506.1	1 unit
554.4	444	500	9	399	460	15.0	Without door	01.243.509.1	1 unit
554.4	577	500	12	532	460	17.0	Without door	01.243.512.1	1 unit
554.4	711	500	15	666	460	19.5	Without door	01.243.515.1	1 unit
554.4	844	500	18	799	460	22.0	Without door	01.243.518.1	1 unit
554.4	978	500	21	932	460	24.0	Without door	01.243.521.1	1 unit
554.4	1111	500	24	1066	460	26.0	Without door	01.243.524.1	1 unit
554.4	311	600	6	265	560	14.0	Without door	01.243.606.1	1 unit
554.4	444	600	9	399	560	16.5	Without door	01.243.609.1	1 unit
554.4	577	600	12	532	560	19.0	Without door	01.243.612.1	1 unit
554.4	711	600	15	666	560	22.0	Without door	01.243.615.1	1 unit
554.4	844	600	18	799	560	24.5	Without door	01.243.618.1	1 unit
554.4	978	600	21	932	560	27.0	Without door	01.243.621.1	1 unit
554.4	1111	600	24	1066	560	29.5	Without door	01.243.624.1	1 unit
554.4	577	700	12	532	660	21.5	Without door	01.243.712.1	1 unit
554.4	711	700	15	666	660	24.0	Without door	01.243.715.1	1 unit
554.4	844	700	18	799	660	27.0	Without door	01.243.718.1	1 unit
554.4	978	700	21	932	660	29.5	Without door	01.243.721.1	1 unit
554.4	1111	700	24	1066	660	32.5	Without door	01.243.724.1	1 unit
554.4	577	800	12	532	760	23.5	Without door	01.243.812.1	1 unit
554.4	711	800	15	666	760	26.5	Without door	01.243.815.1	1 unit
554.4	844	800	18	799	760	29.5	Without door	01.243.818.1	1 unit
554.4	978	800	21	932	760	32.5	Without door	01.243.821.1	1 unit
554.4	1111	800	24	1066	760	35.5	Without door	01.243.824.1	1 unit

Dimensions in mm:

W = Width	h = Installation height	U = Standard rack unit	kg = Weight
H = Height	d = Insertion depth	(1 U = 44.45 mm)	
D = Depth	L = Length	UP = Packaging unit	

Conversion:

1 mm = 0.03937 inch
1 kg = 2.2046 pounds



DOP20004

Vertiv™ Knürr® DoubleProRack®
19" Installation, Front with T-slot

- Can also be used as second mounting level.

Material

- Aluminum extrusions.

Finish

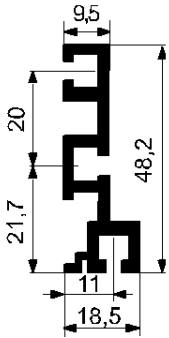
- Polished.

Scope of delivery

- 2 x 19" extrusions at the front, T-slot.
- 1 x Mounting kit.

How supplied

- In sets.



DOP00313

U	Order No.	UP
6	01.240.440.9	1 set
9	01.240.443.9	1 set
12	01.240.445.9	1 set
15	01.240.446.9	1 set
18	01.240.447.9	1 set
21	01.240.448.9	1 set
24	01.240.449.9	1 set



DOP20005

Vertiv™ Knürr® DoubleProRack
19" Installation, Front with Mounting Holes

- Can also be used as second mounting level.

Material

- Extruded aluminum extrusions.

Finish

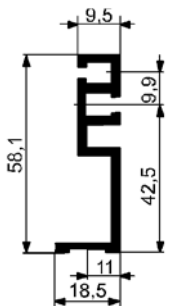
- Polished.

Scope of delivery

- 2 x 19" extrusions at the front, mounting holes.

How supplied

- In sets.



DOP00055

U	Order No.	UP
6	01.240.490.9	1 set
9	01.240.493.9	1 set
12	01.240.495.9	1 set
15	01.240.496.9	1 set
18	01.240.497.9	1 set
21	01.240.498.9	1 set
24	01.240.499.9	1 set



DOP20035

Vertiv™ Knürr® DoubleProRack
Fan Rear Panel 3 U

- With axial fans.
- With thermostat.

Technical data for single fan

- Max. volume flow (free blowing): 162 m³/h.
- Noise emission (free blowing): 37 dB(A).

Technical data for thermostat

- Setting range: 0 to 60°C.
- Mains supply: 240 V / 50 Hz.
- Nominal current: 16 A.

Scope of delivery

- 1 x fan rear panel, wired.
- 1 x Mounting kit.

Finish / Color

- Powder-coated texture, RAL 7035 light-grey.

How supplied

- Assembled.

Note

- Cannot be used in the enclosure's lowest U.



DOP20036

W	H	U	Model	Order No.	UP
554.4	132.5	3	With thermostat	01.243.428.1	1 unit



DOP00275

Vertiv™ Knürr® DoubleProRack
Rear Panel, closed

- For DoubleProRack width 554.4 mm.

Material / Finish

- Sheet steel, 0.8 mm, powder-coated texture.

Color

- RAL 7035, light-grey.

Scope of delivery

- 1 x rear panel, closed.
- 1 x Mounting kit.

How supplied

- In sets.

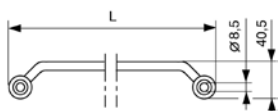
W	U	Order No.	UP
554.4	6	01.240.454.1	1 unit
554.4	9	01.240.457.1	1 unit
554.4	12	01.240.459.1	1 unit
554.4	15	01.240.460.1	1 unit
554.4	18	01.240.461.1	1 unit
554.4	21	01.240.462.1	1 unit



DOP00278

Knürr DoubleProRack® Multi-functional Handle

- **Material / Finish**
 - Die-cast powder-coated texture.
- **Color**
 - RAL 5008, grey-blue.
- **Standard inclusion**
 - 2 x handles.
 - 1 x Mounting kit.
- **Delivery**
 - In sets.



DOP00231

W	H	D	U	Model	Order No.	UP
			500		01.240.641.1	1 unit
			600		01.240.642.1	1 unit
			700		01.240.643.1	1 unit
			800		01.240.644.1	1 unit



DOP00274

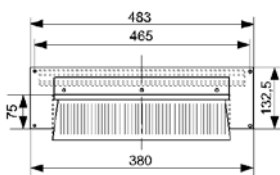
Vertiv™ Knürr® DoubleProRack® Connection Panel with Brush Strip

- To cover rear panel along with the corresponding rear panel shortened by 3 U.
- For DoubleProRack width 554.4 mm.
- With brush strip for cable routing and strain relief.

- **Finish / Color**
 - Powder-coated texture, RAL 7035 light-grey.

- **Scope of delivery**
 - 1 x connection plate.
 - 1 x Mounting kit.

- **How supplied**
 - In sets.



DOP00288

W	H	U	Order No.	UP
554.4	132.5	3	01.243.438.1	1 unit



MEC20122

Vertiv Knürr DoubleProRack Grounding Set for Enclosures

- For grounding top/bottom cover.
- With central grounding bolt.

- **Scope of delivery**
 - 2 x grounding connections, length 250 mm.
 - 4 x spring nuts, M5.
 - 2 x washers.
 - 4 x cylinder screws, M5 x 10.
 - 1 x grounding bolt.

- **How supplied**
 - In sets.



DOP20025

Order No.	UP
01.243.400.9	1 set



MEC20123

Vertiv Knürr DoubleProRack Grounding Set for Doors and Trims

- For grounding doors and/or cover plates.

- **Scope of delivery**
 - 5 x grounding connections, length 250 mm.
 - 1 x grounding connection, 250 mm, two-sided AMP plug.
 - 5 x spring nuts, M5.
 - 5 x cylinder screws, M5 x 10 with tooth-lock washer.
 - 5 x washers.

- **How supplied**
 - In sets.



DOP00286

Order No.	UP
01.245.400.9	1 set

- assemble to order (shipped within 5 working days).
Caution: In case of larger orders, delivery times may increase.

Dimensions in mm:				Conversion:
W = Width	h = Installation height	U = Standard rack unit	kg = Weight	1 mm = 0.03937 inch
H = Height	d = Insertion depth	(1U = 44.45 mm)		1 kg = 2.2046 pounds
D = Depth	L = Length	UP = Packaging unit		



ELM00068

Grounding Bar

- For safe grounding or potential equalization of equipments and components.

■ **Material**
- Electrolyte copper 9 x 9.

■ **Scope of delivery**
- 1 x grounding bar.
- 2 x brackets.
- 1 x Mounting kit.

U	Order No.	UP
12	01.110.703.9	1 unit
15	01.240.543.9	1 unit
18	01.240.544.9	1 unit
21	01.240.545.9	1 unit
24	01.240.546.9	1 unit



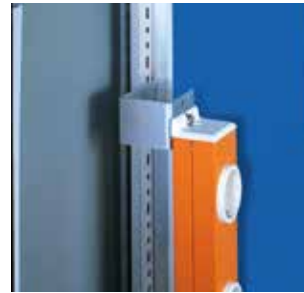
DOP20016

Contact Clamp

- Enables safe connection of equipment and components to grounding bar.
- For cables up to 25 mm².

■ **Scope of delivery**
- 20 x contact clamps.

Order No.	UP
01.110.715.9	20 units P



DOP00282

Vertiv™ Knürr® DoubleProRack® Mounting Bracket

- For mounting socket strips and cable duct.

■ **Material / Finish**
- Zinc-passivated sheet steel.

■ **Scope of delivery**
- 2 x mounting brackets.
- 1 x Mounting kit.

■ **How supplied**
- In sets.

Order No.	UP
01.240.533.9	1 set



DOP00267

Vertiv Knürr DoubleProRack Twin Caster 50 mm

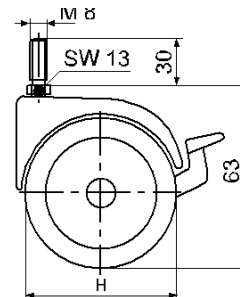
- For mobile installation of the DoubleProRack stand-alone enclosure with fixed casters.

■ **Material / Finish**
- Polyamide, RAL 9011 black.

■ **Load rating**
- 400 N per caster.
- 1200 N max. static total load per rack.

■ **Scope of delivery**
- 2 x twin casters.
- 2 x fixed casters.
- 4 x lock washers.

■ **How supplied**
- In sets.



DOP00233

H	Order No.	UP
50	01.240.527.9	1 set
75	01.240.528.9	1 set

Dimensions in mm:

W = Width h = Installation height U = Standard rack unit kg = Weight
H = Height d = Insertion depth (1 U = 44.45 mm)
D = Depth L = Length UP = Packaging unit

Conversion:

1 mm = 0.03937 inch
1 kg = 2.2046 pounds