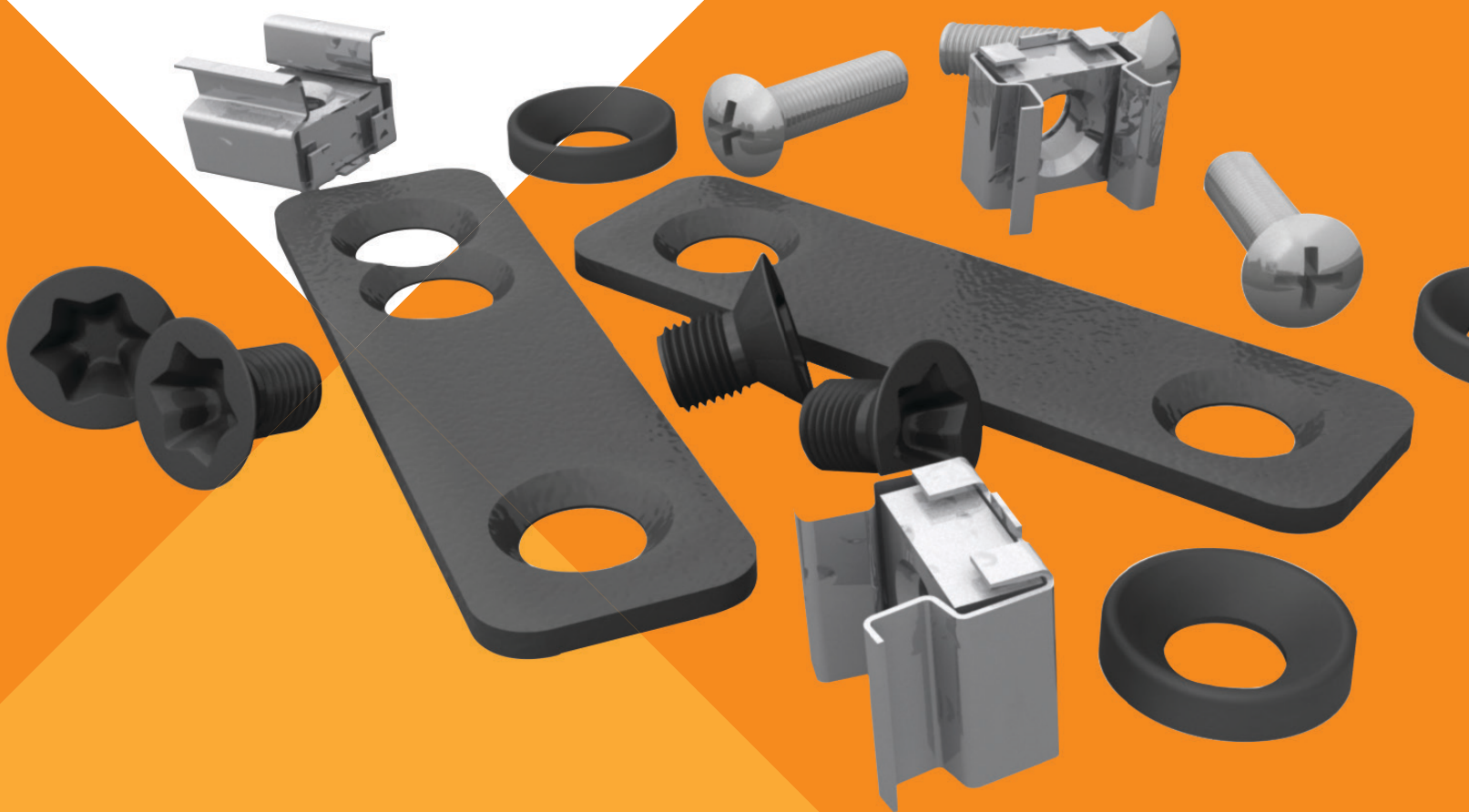




DCF RACK SYSTEM

Ship Loose Accessories



The Following accessories are available as ship loose offerings for the DCF Rack System.

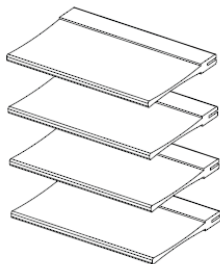
AIRFLOW MANAGEMENT



Part Number: 010200087



Part Number: 010200088



Part Number: EBKR014

19” Blanking Panels

- 19” Plastic Blanking Panels to block off front of unused rack space; offered in 1U and 2U

Brush Kit for Top Panel

- Set of 8 Brush Strips for the DCF standard Top Panel Cable Openings; allows cables to pass thru top of rack.

SYSTEM FEATURES		
Airflow Management		Weight (lbs)
010200087	1U Plastic Tool less Blanking Panel, (box of 10)	3
010200088	2U Plastic Tool less Blanking Panel, (box of 5)	3
EBKR014	Brush Kit for Top Panel (1Kit)	4
542190G1L	1U Metal Blanking Panel with Brish Strip (Kit of 2)	7
546074G1L	42U X 800mm W Vertical Blanking Panel	15
546281G1L	48U X 800mm W Vertical Blanking Panel	16
546659G1L	Air Diverter for IT Switch 4U	8
546659G2L	Air Diverter for IT Switch 12U	12
546659G3L	Air Diverter for IT Switch 15U	16
546659G4L	Air Diverter for IT Switch 21U	21



Part Number: 163796G1L

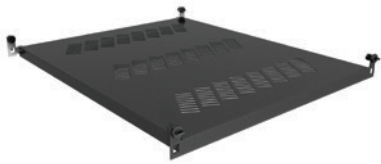


Part Number: 163796G3L

SYSTEM FEATURES		
Fans for Top Covers		Weight (lbs)
163796G1L	FAN1000L: Fan module rated 114 CFM with 15 ft. (4.5m) attached power cord with NEMA 5-15P plug, 120V, 60Hz fan.	5

163796G3L	FAN1000H: Fan module rated 235 CFM with 15 ft. (4.5m) attached power cord with NEMA 5-15P plug, 120V, 60Hz fan.	5
-----------	-----------------------------------------------------------------------------------------------------------------	---

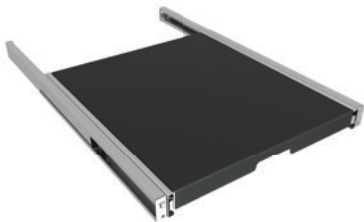
SHELVES AND SUPPORT BRACKETS



Part Number: 002185000

19" Fixed Tool Less Shelf

- 1U Tool Less mounting shelf
- Depth Adjustable 23.5" (570mm) to 46.0" (1168mm)
- Surface Area 17.25" (438mm)W x 23.5" (570mm)D
- Maximum Capacity – 275lbs (135kg)



Part Number: 535809G1

19" 1U Telescopic Shelf

- Depth Adjustable 22.3" (566mm) to 46.0" (1168mm)
- Shelf Dimension 19.7" (500mm)D x 16.7" (425mm)W
- Maximum Capacity – 110lbs (50kg)



Part Number: 542777G1L

"L" Shaped Depth Adjustable Support Rails

- Maximum mounting depth is 25.8" (655mm)
- Minimum mounting depth is 20.2" (513mm)
- Horizontal support flange is 1.12" (28.4mm) wide
- Maximum Capacity - 110lbs (50kg) distributed evenly

SYSTEM FEATURES

Shelves and Support Brackets		Weight (lbs)
002185000	19" 1U Fixed Tool Less Shelf Depth Adjustable	20
535809G1	19" 1U Telescopic Shelf	25
542777G1L	19" "L" Shaped Depth Adjustable Support Rails (1 Set)	10
538619G1L	RPCBDM Bracket to mount BDM on perforated door	1
546080G1L	600W XDV Mounting Bracket	5
546079G1L	800W XDV Mounting Bracket	5

CABLE MANAGEMENT



Part Number: ECRP015

1U 19" Rack Mount Cable Routing Panel, with D Rings

- Single sided Cable Routing Panel
- 5 Front Horizontal D Rings
- Inner Dims 2.80"H x 1.32"D, 1RMU



Part Number: ECT015

19" 1U Telescopic Shelf

- Rack Mount Cable Trough, 1RMU



Part Number: 002185050

Tool Less Cable Management –Lobster Claw

¼ Turn tool-less cable management piece offers the ultimate in flexibility in cable management. These can be installed on the outside edge of the 19" rail or on the PDU/ Cable Management rail.



Part Number: 002185060

Tool Less Cable Management – Velcro Strap

¼ Turn tool-less cable management piece offer the ultimate in flexibility in cable management. These can be installed on the outside edge of the 19" rail or on the PDU/Cable Management rail.

SYSTEM FEATURES

Cable Management		Weight (lbs)
011171448	1 U 19" Mount Cable Routing Panel, with D rings	2
050400558	19" Cable trough	4
002185050	Tool Less Cable Management Piece-Lobster Claw, Pack of (10)	1
002185060	Tool Less Cable Management Piece, Velcro Strap, Pack of (10)	1
002185070	Tool Less Cable Management Piece-Lobster Claw, Pack of (100)	5
002185080	Tool Less Cable Management Piece, Velcro Strap, Pack of (100)	5
E6016	600W Top Panel Mount: Cable Manager (1 Kit)	10
E8016	800W Top Panel Mount; cable Manager (1 Kit)	12
ELRB016	Mounting Brackets for Ladder Rack Height Adjustment (1 Kit)	15

VERTICAL CABLE MANAGEMENT SYSTEM



Part Number: 010200078

18U Vertical Cable Management Finger System

- Cable Finger Sections can be installed on Front and Rear EIA Rails
- Fingers align with rack mount units to create clean cable pathways

SYSTEM FEATURES

Vertical Cable Management System		Weight (lbs)
010200078	Kit of (2) 18U Vertical Fingers includes hardware	3
546545P1	Kit Cbl Cover for Vertical Cable Manager 600 to 800 (kit of 2)	5
546547P1	Kit Cbl Cover for Vertical Cable Manager 800 to 800 (kit of 2)	5



Part Number: 546268G1L

SYSTEM FEATURES

Casters, Anchoring and Cluster Kits		Weight (lbs)
546268G1L	Bolt Down Brackets (Set of 2)	5
546269G1L	Casters (Set of 4)	20
546494G1L	Leveling Feet (Set of 4)	5
546078G1L	Cluster Gasketing Kit	1
E6013	Mounting Hardware (Pk of 50 M6 cage nuts, screws and washers)	3



Part Number: 546269G1L

SYSTEM FEATURES

Handle Options		Weight (lbs)
E10013	Standard Handle	2
E11013	Combination Lock Handle	2
E12013	Key Set for Standard Key Lock Handle and Side Panels Key 1333 (Qty 4)	1



Part Number: E10013



Part Number: E11013



VertivCo.com | Vertiv Headquarters, 1050 Dearborn Drive, Columbus, OH, 43085, USA

© 2017 Vertiv Co. All rights reserved. Vertiv and the Vertiv logo are trademarks or registered trademarks of Vertiv Co. All other names and logos referred to are trade names, trademarks or registered trademarks of their respective owners. While every precaution has been taken to ensure accuracy and completeness herein, Vertiv Co. assumes no responsibility, and disclaims all liability, for damages resulting from use of this information or for any errors or omissions. Specifications are subject to change without notice.