



VERTIV™ CXE EXX SERIES
Cross Connect Enclosures



Statement

Balance
638.62

Transactions

Date	Description	Deposit	Withdrawal	Balance
03/10	Transfer Deposit	2001.11		2420.54
04/10	Withdrawal		718.10	1702.44
04/10	Transfer	67.11		1034.33
04/10	ATM Withdrawal		10.00	1024.33
04/10	Online Payment		10.00	1014.33
04/10	Account Close	12.70		1027.03
04/10	Gas Station	05.00		1022.03
04/10	Medical Insurance	120.43		1202.43
04/10	Credit Card Payment	91.00		1300.43
04/10	ATM Withdrawal		10.00	1290.43
04/10	Overdraft		124.70	1165.73
04/10	Wire Purchase	14.00		1151.73
04/10	Transfer Transfer	100.00		1051.73
04/10	Cash Deposit	40.00		1091.73
04/10	Cash Deposit	204.43		1296.16
04/10	ATM Withdrawal		50.00	1246.16

KEY FEATURES

- Economical solution saves 50-70% over traditional cabinet replacements.
- Expanded termination capability for future growth and application flexibility.
- No service interruptions or circuit downtime reduces installation expense and labor costs.
- Large center splice chamber permits easy installation and maintenance.
- Simplified split cabinet base allows easy cable installation.
- Quick and easy installation reduces installation expense and labor.
- RLS50 self-strip terminal blocks are installed to provide expanded termination capability for future growth and application flexibility.
- Overhanging rain guards, closed-cell neoprene door gasketing, and screened louvers provide environmental protection.
- Industry standard footprint for mounting (37.88" x 8.5") offers maximum versatility in the field.

Upgrade your active DSL network and increase terminations without disrupting service.

Description

The Vertiv™ CXE EXX Series allows an existing pad-mounted cross-connect cabinet to expand from its original size without disrupting service. The existing grill is unbolted and the existing shell is removed without disrupting the existing connections and jumpers. A new Vertiv cabinet is installed and the old grill is bolted onto the new cabinet.

The cabinet is available with RLS50 terminal blocks equipped with 710, 3M® 4005 DPM or 4005 GBM splice modules.

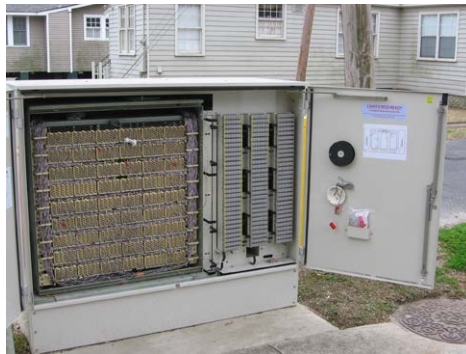
Manufactured of heavy gauge mill-galvanized steel, this quick and easy-to-install cabinet is mounted on an existing pad or standard footprint pad. The cabinet may be accessed from either front or back to expand termination capacity.

Application

The EXX Series increases the termination capability for an existing in-service Vertiv or other cross-connect cabinet, without interrupting customer service.

or

When stand-alone ADSL systems are deployed in the outside plant network, there is a need to efficiently overlay the ADSL onto existing copper facilities. In order to accomplish this in an effective manner, cross-connect cabinets are used to bring POTS into the ADSL remote terminal and to distribute the POTS/ADSL pairs into the distribution network. In the event that the sufficient capacity is not available at a given cross-connect cabinet, the Vertiv CXE XC Expander Series can be utilized.



EZ Series (2700-5400 Pair)

Ordering Information - ESCX Series

CATALOG NUMBER	PART NUMBER	DESCRIPTION
BT25 Harness-Type Boxes		
ESCXHR1RLS	F1009856	Expands 900S to 1800D SCX series cabinet, non-stubbed
ESCXHR2RLS	F1009857	Expands 1500S to 3000D SCX series cabinet, non-stubbed
ESCXHR3RLS	F1009858	Expands 1800S to 2700D SCX series cabinet, non-stubbed
ESCXHR4RLS	F1009859	Expands 1800S to 3600D SCX series cabinet, non-stubbed
ESCXHR5RLS	F1009860	Expands 2700D to 3600D SCX series cabinet, non-stubbed
ESCXHR6RLS	F1009861	Expands 1800D to 2700D SCX series cabinet, non-stubbed
ESCXHR7RLS	F1009862	Expands 3600D to 4800D SCX series cabinet, non-stubbed
ESCXHR8RLS	F1009863	Expands 2700D to 4800D SCX series cabinet, non-stubbed
ESCXHR9RLS	F1009854	Expands 2700D to 5400D SCX series cabinet, non-stubbed
BT25 Stubbed-Type Boxes		
ESCXWR1RLS	F1009864	Expands 900S to 1800D SCX series cabinet, stubbed
ESCXWR2RLS	F1009865	Expands 1500S to 3000D SCX series cabinet, stubbed
ESCXWR3RLS	F1009866	Expands 1800S to 2700D SCX series cabinet, stubbed
ESCXWR4RLS	F1009867	Expands 1800S to 3600D SCX series cabinet, stubbed
ESCXWR5RLS	F1009868	Expands 2700D to 3600D SCX series cabinet, stubbed
ESCXWR6RLS	F1009869	Expands 1800D to 2700D SCX series cabinet, stubbed
ESCXWR7RLS	F1009870	Expands 3600D to 4800D SCX series cabinet, stubbed
ESCXWR8RLS	F1009871	Expands 2700D to 4800D SCX series cabinet, stubbed
ESCXWR9RLS	F1009855	Expands 2700D to 5400D SCX series cabinet, stubbed
ESCXWR7XRLS	F1010486	Expands previously expanded 3600D to 5400D SCX series cabinet, stubbed

Ordering Information - Drop-Down Series with RLS50 Block

CURRENT CABINET	ADD'L PAIR	CATALOG NUMBER	PART NUMBER	DESCRIPTION	DIMENSIONS (H X W X D)
FSDRLS600SDPM	600	FSDRLS612DDPMW	F1009520	Expands 600S to 1200D, 4005 DPM splice modules, off-white	50" x 16" x 20"
FSDRLS900SDPM	900	DRLSX9S18DDPMW	F080058	Expands 900S to 1800D, 4005 DPM splice modules, off-white	38" x 44" x 24"
FSDRLS1800SDPM	1800	DRLSX18S36DDPMW	F080078	Expands 1800S to 3600D, 4005 DPM splice modules, off-white	50" x 44" x 24"
FSDRLS2700DDPM	2700	DRLSX27D54DDPMW	F080059	Expands 2700D to 5400D, 4005 DPM splice modules, off-white	67" x 44" x 24"
FSDRLS3600DDPM	1200	XDRLSX3648DDPMW	F977013	Expands 3600D to 4800D, 4005 DPM splice modules, off-white	67" x 44" x 24"
FSDRLS3600DDPM	1800	XDRLSX3654DDPMW	F977040	Expands 3600D to 5400D, 4005 DPM splice modules, off-white	67" x 44" x 24"
FSDRLS54LPDDPM	2700	DRLS54LPX81DPMW	F080179	Expands 5400D to 8100D, 4005 DPM splice modules, off-white	67" x 67" x 24"

NOTE 1: This is only a small sample of what's available.

NOTE 2: If you are interested in expanding BT Strongbox, RLS, AT&T 40-Type and 3M-style cabinets, contact Vertiv technical support at 800-800-1280 or email tac@VertivCo.com for available options.



VertivCo.com | Vertiv Headquarters, 1050 Dearborn Drive, Columbus, OH, 43085, USA

© 2018 Vertiv Co. All rights reserved. Vertiv and the Vertiv logo are trademarks or registered trademarks of Vertiv Co. All other names and logos referred to are trade names, trademarks or registered trademarks of their respective owners. While every precaution has been taken to ensure accuracy and completeness herein, Vertiv Co. assumes no responsibility, and disclaims all liability, for damages resulting from use of this information or for any errors or omissions. Specifications are subject to change without notice.

OE-01250 (R07/18)