

VERTIV™ BBE SE SERIES

CCP1016 Broadband Edge Enclosures



KEY FEATURES

- Multiple facilities housed in one pedestal serve the function of two pedestals and offer an aesthetically pleasing installation site.
- Two independent equipment compartments provide craft separation between the two facilities.
- Large capacity of internal compartments offers greater access to the equipment.
- Universal mounting plate simplifies mounting for coax and copper distribution equipment.
- Lift-off front cover offers complete 180° access to each compartment for easy installation and maintenance.
- Temporary service drop knockouts permit service until drops can be trenched.
- Bonding and grounding provisions accommodate equipment bonding and grounding requirements.
- Hex-head locking bolt with padlock hasps and provisions for Star Lock design security bolts ensure maximum security versatility.
- Our unique multistage gray-green finishing process meets or exceeds EPA standards, and provides a tough corrosion-resistant finish for longer life.

Description

CCP1016 is an above-ground metallic enclosure for housing a combination of distribution equipment including coaxial, twisted pair copper, and/or fiber distribution.

Designed with two separate compartments, the CCP1016 enclosure allows neat and efficient use of multiple distribution facilities, yet offers craft separation between the two.

The CCP1016 Enclosure is equipped with two 32-in. mounting stakes and factory installed universal mounting plates.

By combining multiple facilities into one pedestal enclosure, the CCP1016 enclosure takes the place of two enclosures for a more economical and aesthetically pleasing installation. Vertiv BBE SE Series enclosures are manufactured of heavy gauge mill-galvanized steel, treated with a unique finishing process for longer life.

Application

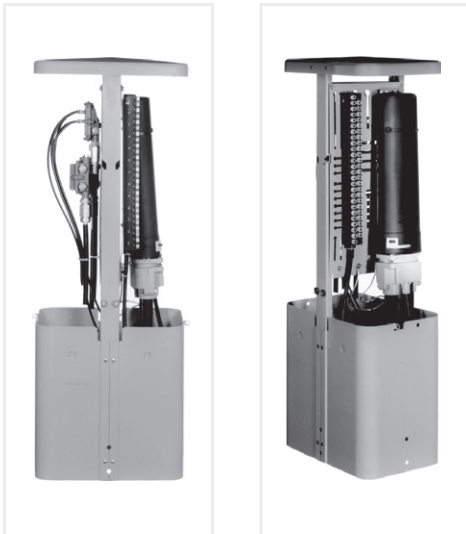
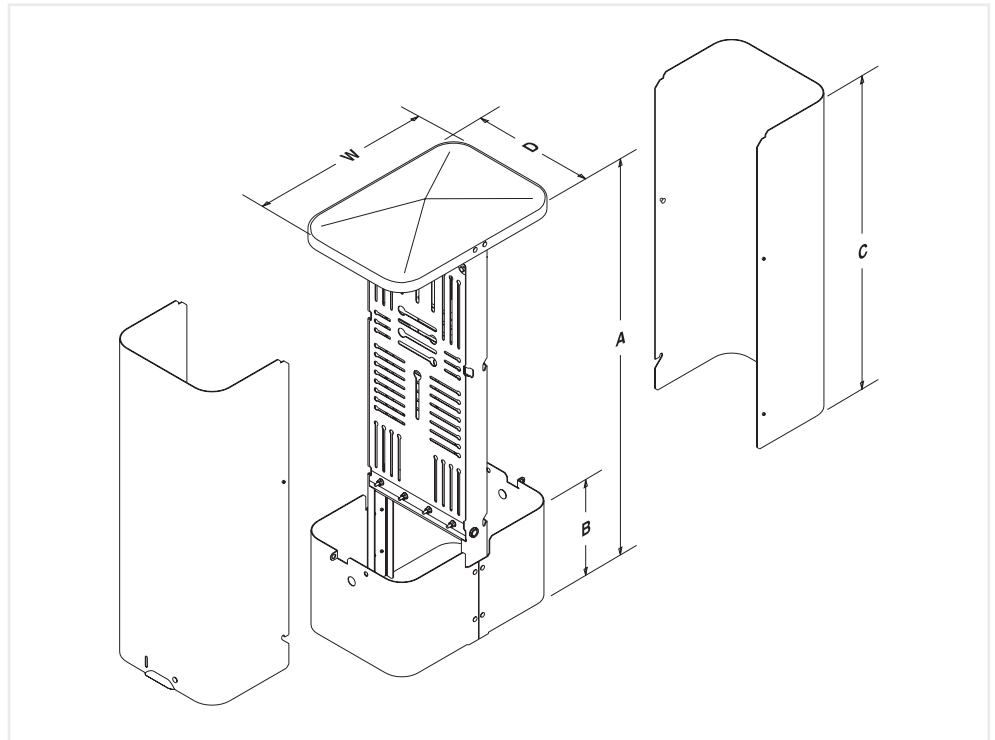
The CCP1016 enclosure serves as an above-ground housing for joint installation of coaxial, copper and/or fiber distribution facilities and equipment, such as taps, splitters, line extenders, splice modules, terminal blocks, splice cases, etc. The CCP1016 Pedestal Series is designed for joint trenching applications, and for providers of both voice and video services.



Dimensions & Ordering Information

CATALOG NUMBER	PART NUMBER	A	B	C	D	W
CCP1016	F605121	43 1/2-in.	16-in.	25-in.	10 3/4-in.	16 1/4-in.

NOTE: The internal mounting space is 26.3"H x 10.5"W x 6.9"D per side of enclosure.



Accessories

CATALOG NUMBER	PART NUMBER	DESCRIPTION
P85690	F585690	One louvered front cover
P85946	F585946	300-pair RLS mounting plate