

VERTIV CXE BSBT SERIES

Outdoor Building Terminals



KEY FEATURES

- Sealed IDC technology provides quicker terminations.
- Divider plate is factory installed and can be factory or field equipped with 25 or 50 feeder pair.
- Sealed 5-pin protection enables easy installation and removal of protection modules.
- Compact cross-connect system requires minimum mounting space.
- Hinged divider plate provides easy access for splicing.
- Built-in splice chamber for material and installation cost savings.
- Rugged metal housing made of mill-galvanized steel for durability and low maintenance costs.
- UL Listed for documented performance.
- Slip-hinged divider plate is available separately for easy upgrading of older Vertiv™ BSBTs.

Space-saving and reliable building entrance systems for multiple dwelling units.

Description

Vertiv™ CXE BSBT Series outdoor building terminal is a reliable building entrance system for residential and commercial buildings that accommodates co-location.

The BSBT Series provides a cross-connect system for apartment buildings, townhouses, condominiums, light commercial buildings, and other multidwelling units (MDUs). This terminal features a splice chamber capacity of up to 300 pairs. Models are available to support either 25 or 50 feeder pairs, as well as 100 subscriber lines. The BSBT utilizes sealed insulation displacement connection (IDC) technology, which enables quicker jumper terminations.

The complete unit consists of the housing and divider plate. The plate is also available individually for upgrading existing BSBT housings via an easy-to-use slip hinge. Simply replace the existing divider plate with the slip hinge rehab panel and transfer service over.



*BSBT Series
Outdoor Building Terminal*



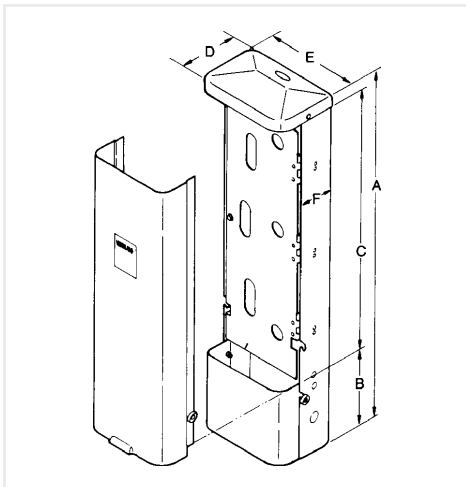
Interior of Splice Chamber



*Slip-Hinge Rehab Panel
BSBT25100PNL*



BSBT Divider Panel Components



DIMENSIONS*		
Empty BSBT Enclosure		
A.	47 in.	119.38 cm
B.	12 in.	30.48 cm
C.	35 in.	88.9 cm
D.	7.75 in.	19.69 cm
E.	10.25 in.	26 cm
F.	4.25 in.	10.8 cm

* The dimensions of the splice chamber are (H x W x D): 4.25 in. x 10.25 in. x 4.25 in. (88.9 cm x 26.04 cm x 10.8 cm)

** 5 pin protection modules not included.

Pedestal Construction

Vertiv™ CXE BSBT Series outdoor building terminal is manufactured with heavy-gauge, mill-galvanized steel that is treated with a unique finishing process. This multi-stage paint process meets or exceeds Environmental Protection Agency (EPA) standards.

The tough, corrosion-resistant finish ensures a longer life for the outdoor pedestal terminal.

The BSBT Series features a built-in splice chamber that enables material and installation cost savings, and the hinged divider plate provides convenient access and security for the splicing area.

For cable entry, knockouts are located on the back of the closure, and service wire ports are also provided.

They are designed to mount to virtually any surface via stand-off mounting brackets, which are included.

Divider Panel Construction

The BSBT Series divider panel is available with the housing, or it can be bought separately. When purchased separately, the divider panel can be used to upgrade old-style BSBT Series outdoor building terminals.

The connectorized panel is offered with RLS25 or RLS50 pair feeders, with or without protection modules installed. The feeder pairs enter through a sealed mini-chamber that houses 5-pin protection modules and a 3 foot stub with a connector for feeder interface.

Located below the feeder block are 100-pair subscriber lines, which are accessed through ten RLS10 back-to-back terminal blocks.

These back-to-back blocks terminate subscriber lines on the back side, with the front side serving as an interconnect field for service feed jumpers.

Ordering Information

CATALOG NUMBER	PART NUMBER	DESCRIPTION
Slip-Hinge Rehab Panels (to retrofit existing Vertiv BSBTs) **		
BSBTS25100PNL	F1004559	25-pair feeder size; 710 modules
BSBTS50100PNL	F1004561	50-pair feeder size; 710 modules
BSBT25100PNLGBM	F1010940	25-pair feeder size; MS2 filled
BSBT50100PNLGBM	F1010941	50-pair feeder size; MS2 filled modules
Complete Units (housing and panel)**		
BSBTS25100	F1004563	25-pair feeder size; 710 modules
BSBTS50100	F1004565	50-pair feeder size; 10 modules
BSBT25100GBM	F1010942	25-pair feeder size; MS2 filled modules
BSBT50100GBM	F1010943	50-pair feeder size; MS2 filled modules
BSBT	F608019	BSBT enclosure, includes empty divider plate (no terminal blocks)