

# Vertiv™ PowerUPS 200

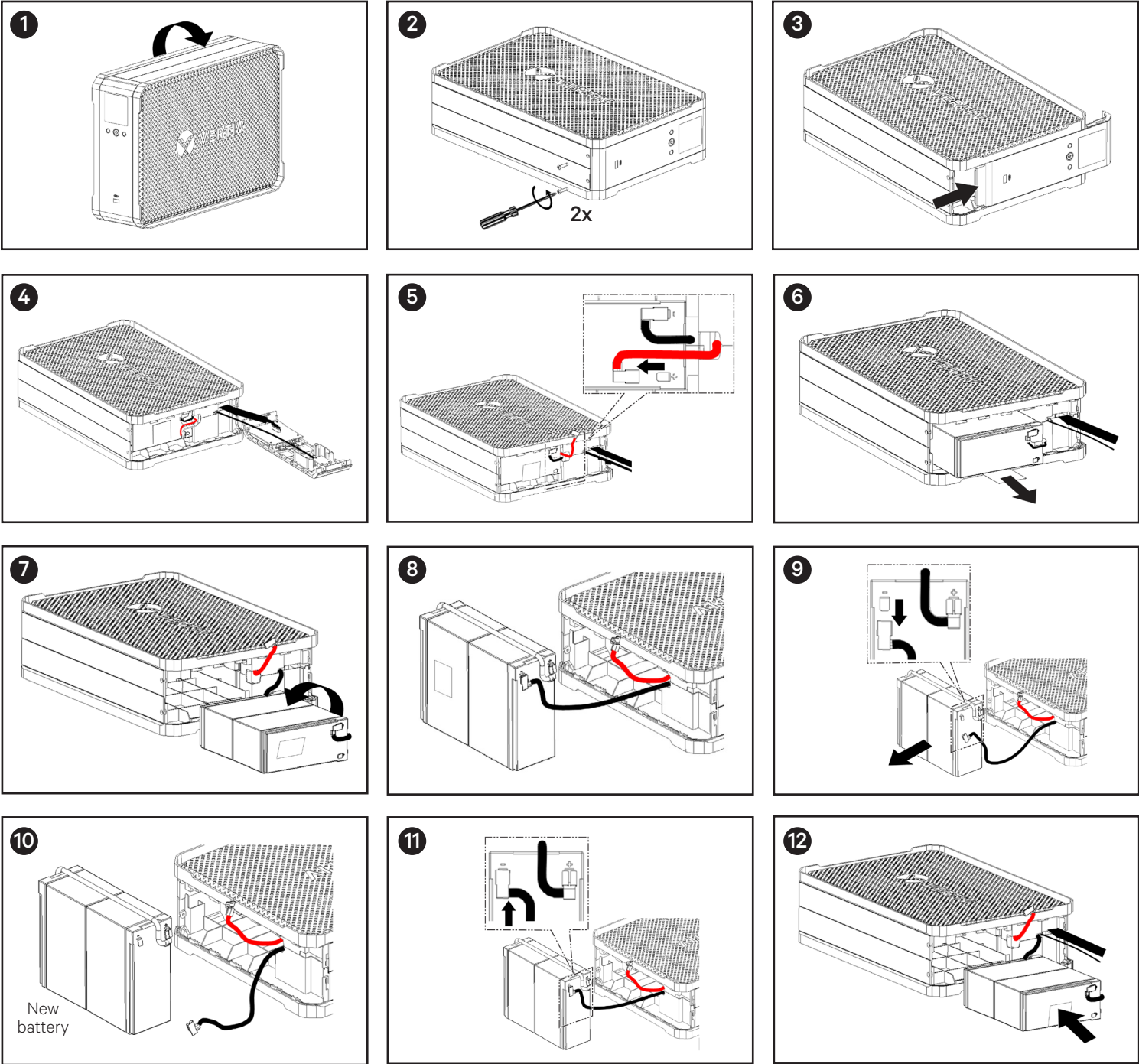
## Line Interactive Series



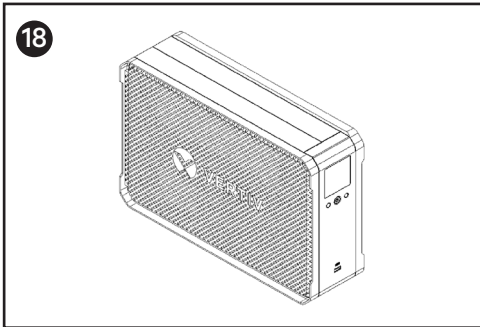
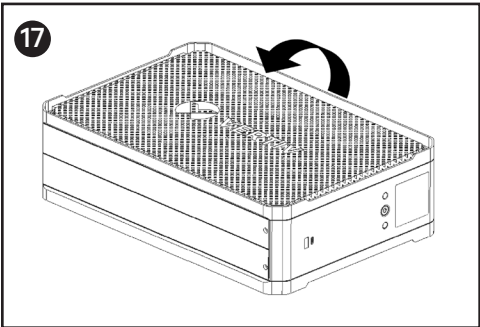
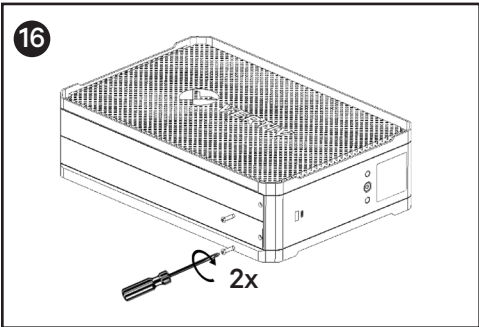
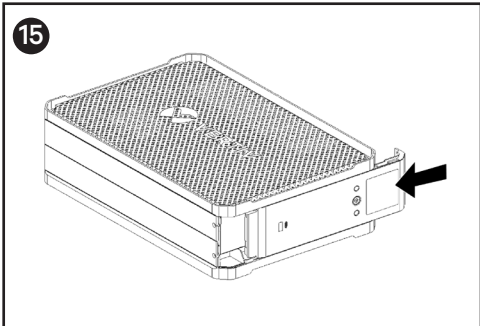
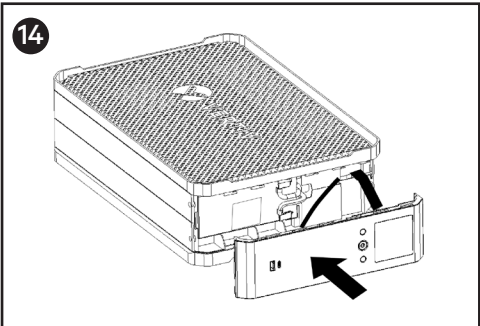
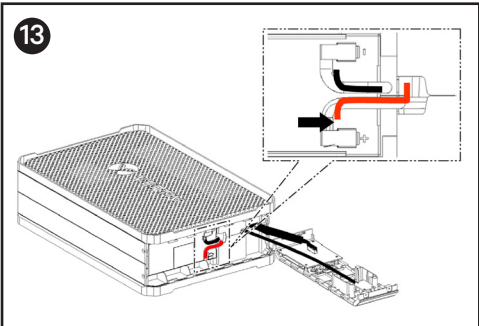
### Battery Replacement Guide

**IMPORTANT:** Before you proceed, please review the battery safety precautions available at <https://www.vertiv.com/ComplianceRegulatoryInfo>.

AVAILABLE BATTERY KIT MODELS	
Vertiv Replacement Battery Model Number	UPS Model Number
VBATKIT203	PSA6-1000IT-IEC and PSA6-1000IT-SCH
VBATKIT204	PSA6-1600IT-IEC and PSA6-1600IT-SCH



Battery Replacement Guide



To contact Vertiv Technical Support: visit [www.Vertiv.com](http://www.Vertiv.com)

© 2025 Vertiv Group Corp. All rights reserved. Vertiv™ and the Vertiv logo are trademarks or registered trademarks of Vertiv Group Corp. All other names and logos referred to are trade names, trademarks or registered trademarks of their respective owners. While every precaution has been taken to ensure accuracy and completeness here, Vertiv Group Corp. assumes no responsibility, and disclaims all liability, for damages resulting from use of this information or for any errors or omissions.

