

VERTIV™ CXE BEP SERIES

Building Entrance Terminals



KEY FEATURES

- Built-in splice chamber provides material and installation cost savings.
- Lift-out protector panel facilitates installation; reduces inventory costs; is easy to repair.
- Compact size requires minimum mounting space.
- All units are stackable to accommodate future growth.
- Gold-plated protector contacts minimize noise and customer complaints.
- Rugged metal housing made of mill-galvanized steel for durability and low maintenance costs.
- Designed to meet Telcordia TR-TSY-000299.
- Use with UL Listed industry standard 5-pin protection modules.
- 26 AWG 18 in. fuse link for added protection.
- Lock hasp provided for added security.
- Meets or exceeds RUS requirements.

The Vertiv™ CXE BEP Series terminals combine protection and distribution with a built-in splice chamber, for a single, compact, cost-effective unit.

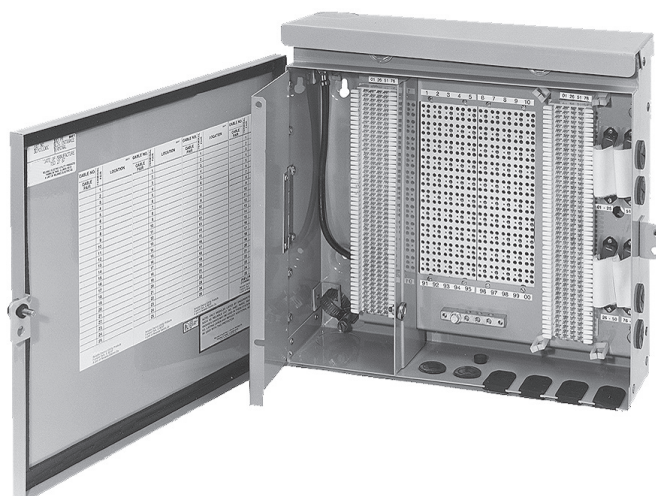
Description

The Vertiv CXE BEP Series central office pairs are connected with the following options: field splice, 710 connectors, 3M® dry connectors or 66 quick-clip block. A 26 AWG fuse link is available for added protection. Subscriber wires are connected via the following options: 66 quick-clip, RJ21 or both 66 quick-clip and RJ21.

The BEP series is available in 25-pair, 50-pair and 100-pair sizes, and the 100-pair unit is stackable to 300-pair (stacking kit included in 100-pair). The protection panel uses 5-pin protection modules, not included, and the enclosure is accessed using a 216-type tool.

Application

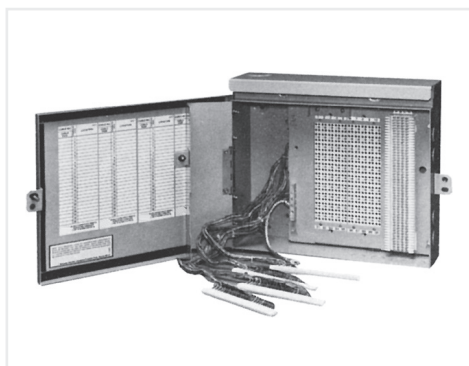
The BEP Series is designed for indoor building entrance applications and terminate, protect, and distribute central office cable pairs on the subscriber premises. They are ideal for use in multi-tenant dwelling and PABX installations.



Quick-Clip In/Quick-Clip and RJ21 Out



*BEPC25C (25-pair)
Quick-Clip In & Out*



*BEPC100MM (100-pair)
3M® Dry Connector In/Quick-Clip Out*

Ordering Matrix

DESCRIPTION	VALUE		
Housing	BEP	=	Building Entrance Protector
Output	C	=	66 Quick-clip block
	G	=	RJ21 receptacle connector
	CG	=	66 Quick-clip block & RJ21 receptacle connector
Pair Count	25	=	25-pair
	50	=	50-pair
	100	=	100-pair*
Input	FS	=	Field splice, 18 in. tail
	CF	=	710 connector, capless, receptacle, gel-filled, 18 in. tail, 26 AWG fuselink
	MM	=	3M® 4000-D dry (MS2), 18 in. tail, 26 AWG fuselink
	C	=	66 Quick-clip block, 26 AWG fuselink

* 100-pair includes stacking kit

Dimensions

	HEIGHT	WIDTH	DEPTH
HOUSING DIMENSIONS	38.10 cm (15.00 in.)	39.14 cm (15.41 in.)	11.94 cm (4.7 in.)

Accessories

CATALOG NUMBER	PART NUMBER	DESCRIPTION
P35980	F535980	Grommets for 1 in. diameter hole (pkg. of 20)
P47839	F547839	U-shaped grommet