

# AVOCENT™ VPX300

## CAT5 VGA USB KVM Extender Series



### Product Features

- 300 Meter CAT5 extension distance
- Built-in KVM Switching feature on the Receiver Unit (VPX300R)
- Local / Remote computer selection on Receiver console by a switch button and keyboard hotkeys
- Remote Console Access Mode Selection for ON/OFF/View Only by switch buttons and keyboard hotkeys
- USB connectivity support on console and computer side
- OSD Menu-driven control for easy system configuration
- Keyboard hotkey control for configuration and operation
- Full keyboard and mouse emulation to support Microsoft and Logitech standard 5 key mouse and compatibles.
- DDC/EDID support mode selection for Local / Remote Monitor by OSD and keyboard hotkeys
- Easy plug-and-play to extend your second console up to 300-Meter away
- Analog video resolution up to 1920 x 1200
- Firmware upgradeable via USB interface.

### Specifications

- **Transmitter Unit Connectors:**  
1 x HDB15 Female  
1 x HDB15 Female (for computerintegrated with video, keyboard and mouse)  
1 x USB Type-B Upgrade Port  
2 x USB Type-A Female  
1 x RJ45
- **Receiver Unit Connectors:**  
1 x HDB15 Female  
1 x HDB15 Female (for computerintegrated with video, keyboard and mouse)  
1 x USB Type-B Upgrade Port  
2 x USB Type-A Female  
1 x RJ45
- **Resolution:**  
1920 x 1200
- **Extension Distance:**  
300M
- **DDC/EDID Emulation:**  
Local-site Monitor/Remote-site Monitor
- **Power Supply:** DC 5V
- **Storage/Operation Temperature:**  
Operation: 0 ~ 50°C  
Storage: -20 ~ 60°C
- **Humidity:**  
0~90% RH, Non-Condensing
- **Certifications:** CE, FCC

**Vertiv VPX300** CAT5 VGA USB KVM Extender allows KVM extension over a standard high-quality CAT5 cable up to 300 meters. By utilizing CAT5 extension technology, users can easily extend the KVM control over long distances while maintaining good video signal quality with intuitive video adjustments through its OSD menu operation. It is applicable in scenarios such as exhibition room, working floors, security rooms, locked server rooms, or other mission-critical situations. This CAT5 VGA USB KVM Extender allows you to locate your vital server physically far from the remote user due for security or spatial concerns. The VPX300 supports USB keyboard and mouse at both the remote console (user) site and the local console (computer) site. Additionally, it is firmware upgradeable via dedicated USB upgrade ports on transmitter and receiver units, ensuring the extender operates with the latest functionality and compatibility enhancement.

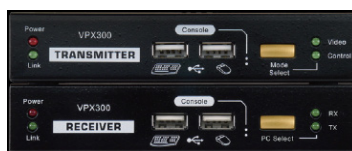
### Built-in KVM Switching on the Remote Console for More Versatility

The VPX300R is equipped with a 2-port KVM Switch, allowing the user to switch between a nearend KVM port (the computer connected to the remote-site receiver unit) and a far-end KVM port (the computer connected to the local-site transmitter unit, up to 300 meters away). The user at the remotesite console can not only control the far-end TX-site computer/server over the CAT5 extension but also switch to control the near-end computer, providing more flexible management at the remote-site console. This KVM switching function adds value to the CAT5 extension by offering greater convenience and flexibility for remote-site users.

### Adjusting Video Skew Compensation via OSD Menu Operation

After being transmitted over a long distance of 300 meters, the video signals carried on different twisted pairs of the CAT5 cable may vary in their arrival times at the receiver end, requiring significant skew compensation. The **Video Skew Compensation** settings can be easily adjusted through the OSD menu.

### Unit Panels

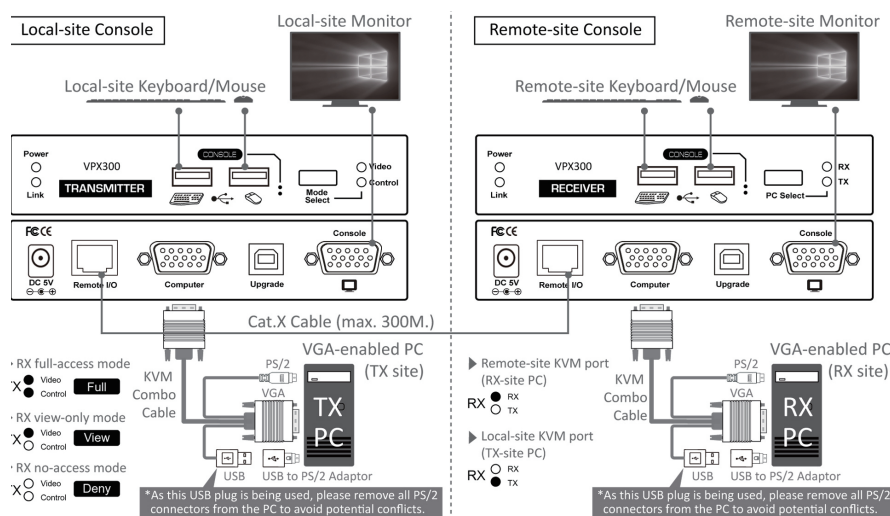


VPX300T / VPX300R Unit  
Front Panels



VPX300T / VPX300R Unit  
Rear Panels

### System Configuration



### Ordering Information

Model No.	Description
VPX300T / VPX300R	300-meter VGA USB KVM Transmitter/Receiver Units