



Vertiv™ VR Rack

Selection Guide



Vertiv™ VR Rack

Rapid Deployments Everywhere You Operate

Standardize your deployments around the world and bring them online faster with the Vertiv™ VR rack. The Vertiv VR Rack supports a wide variety of equipment, including: servers, storage, switches, routers, PDUs, UPSs, console port servers and KVM switches.

The Vertiv VR Rack is delivered ready for high density environments to serve your mission critical needs — even as they evolve and change. This rack gives you the flexibility you need with easy installation.

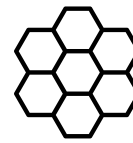
The Vertiv™ VR Rack offers these advantages:

- Available in 10 standard sizes.
- Full depth adjustability of the 19" rails.
- Frame design allow for more than 2.5" more usable depth than similar sized racks.
- Doors that have 77% perforation and can be hinged on either side.
- Tool-less removable top panel has four cable entry holes allowing for up to 2000 Cat6 cables, or 60A PDU plugs.
- Two dual purpose full height depth adjustable PDU / cable management brackets mounted in the zero U space with tool-less button mounting of rack PDUs, accessory mounting holes for tool-less cable management accessories, and integrated cable tie off positions.
- 42U frame height that allows for the rack to pass through standard doors on casters.
- Simple external baying, allows for metric baying or on 24" centers.
- Split side panels with single locking slam latch allows for easy single person removal / installation.



High Density Cable Entry Top Panel

Removable openings for cable entry — ready for front / rear cabling. Can accommodate over 2000 Cat 6 cables.



Doors

Single and split 77% perforated doors providing maximum airflow. Lift off hinges for easy removal, and field reversibility.

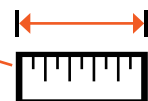
Frame

More usable depth compared to similar sized rack.



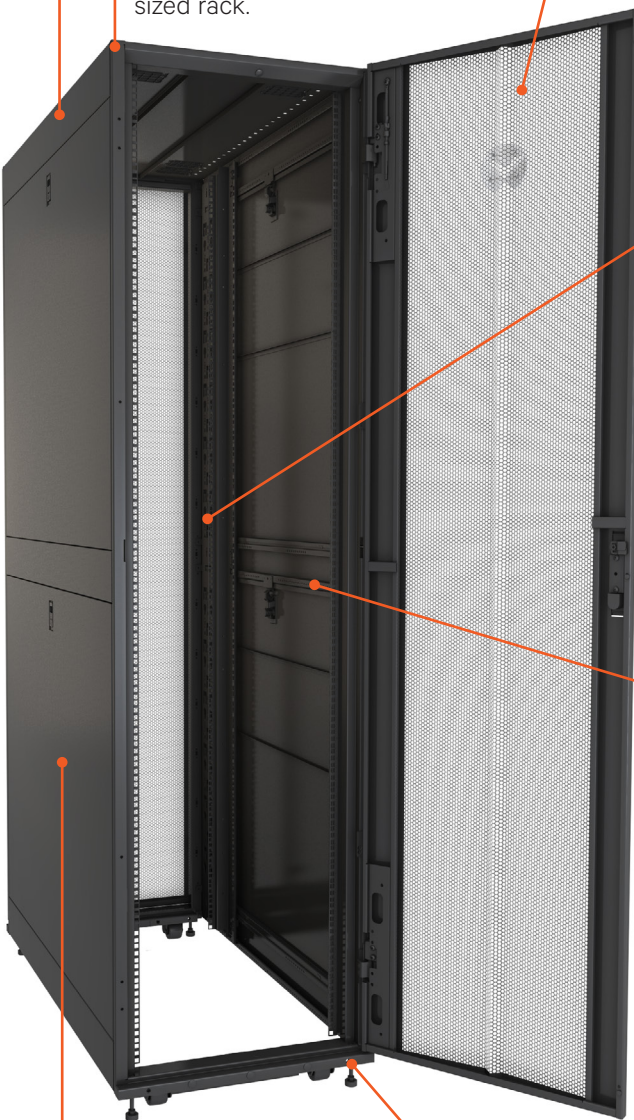
Tool-less Cable Management

Requires just inserting and twisting the tool-less accessories on 19" vertical mounting rail, or the PDU / cable management brackets.



Integrated 19" Rail Alignment

Ensures 19" rails are positioned correctly without measuring.



Split Locking Side Panels

For quick and easy installation and maintenance. Locks provide security.



Leveling Feet

Accessible from the top of the frame for easy adjustment.



3-YEAR STANDARD FACTORY WARRANTY

Extend your factory warranty coverage to a 5-Year warranty by registering your Vertiv VR Rack [HERE!](#)

Vertiv™ VR Rack Model Overview

Part Number	U	Height Mm (Inches)*	Width Mm (Inches)*	Depth Mm (Inches)*
VR3100	42	2000 (78.6")	600 (23.6")	1100 (43.3")
VR3100SP	42	2000 (78.6")	600 (23.6")	1100 (43.3")
VR3100TAA	42	2000 (78.6")	600 (23.6")	1100 (43.3")
VR3300	42	2000 (78.6")	600 (23.6")	1200 (47.8")
VR3300SP	42	2000 (78.6")	600 (23.6")	1200 (47.8")
VR3300TAA	42	2000 (78.6")	600 (23.6")	1200 (47.8")
VR3150	42	2000 (78.6")	800 (31.5")	1100 (43.3")
VR3150SP	42	2000 (78.6")	800 (31.5")	1100 (43.3")
VR3150TAA	42	2000 (78.6")	800 (31.5")	1100 (43.3")
VR3350	42	2000 (78.6")	800 (31.5")	1200 (47.8")
VR3350SP	42	2000 (78.6")	800 (31.5")	1200 (47.8")
VR3350TAA	42	2000 (78.6")	800 (31.5")	1200 (47.8")
VR3105	45	2132 (83.9")	600 (23.6")	1100 (43.3")
VR3107	48	2265 (89.2")	600 (23.6")	1100 (43.3")
VR3107SP	48	2265 (89.2")	600 (23.6")	1100 (43.3")
VR3107TAA	48	2265 (89.2")	600 (23.6")	1100 (43.3")
VR3305	45	2132 (83.9")	600 (23.6")	1200 (47.8")
VR3307	48	2265 (89.2")	600 (23.6")	1200 (47.8")
VR3307SP	48	2265 (89.2")	600 (23.6")	1200 (47.8")
VR3307TAA	48	2265 (89.2")	600 (23.6")	1200 (47.8")
VR3157	48	2265 (89.2")	800 (31.5")	1100 (43.3")
VR3157SP	48	2265 (89.2")	800 (31.5")	1100 (43.3")
VR3157TAA	48	2265 (89.2")	800 (31.5")	1100 (43.3")
VR3357	48	2265 (89.2")	800 (31.5")	1200 (47.8")
VR3357SP	48	2265 (89.2")	800 (31.5")	1200 (47.8")
VR3357TAA	48	2265 (89.2")	800 (31.5")	1200 (47.8")

*Nominal dimensions, reference submittal drawings for exact dimensions
VRXXXXSP ship with 2000 lb. rated shock packaging VRXXXXTAA are TAA Compliant

Each Vertiv VR Rack includes:

- Single 77% perforated locking front door.
- Split 77% perforated locking rear doors.
- 2 pair split locking side panels.
- High density cable entry top cover (2000 Cat 6 cables).
- 2 sets of 19" EIA Rails.
- Full height rack PDU Mounting/cable management brackets (one per side for 1100mm deep racks, two per side for 1200mm deep racks).
- Low profile casters and leveling feet.
- Baying brackets.
- Bolt down brackets.
- Hardware includes (50 each M6 cage nuts and screws), Cage nut installation tool, edge protection for top panel cable entry, T30 / Phillips L key, T30 extension driver.
- Keys.

Features

Frame

Frame capable of supporting up to 3000 lbs (1360kg) Static, 2250 lbs (1022kg) Dynamic, 2000 lbs (907kg) Transport (with Shock Package).

Simple external baying, allows for metric or on 24" centers and leveling feet incorporated into the frame for easy adjustment.

42U frame height that will allow access through standard doors on four swivel casters.

Door & Side Panels

Single perforated front door and split rear doors with tool-less lift off hinges.

Locking handles.

Field reversible doors.

77% perforation exceeds IT manufacturers specifications.

Split side panels with single locking slam latch.

Top Panel

Tool-less removeable top panel.

Integrated hole pattern for easy installation of top panel accessories (cable management, modular busway support brackets, ladder / cable tray support brackets).

Four cable entry holes allowing for up to 2000 Cat6 cables, or 60A PDU plugs.

Top Panel load capacity of 150 lbs.

19" Mounting Rails

(2) Pair of full height 19" EIA mounting rails, accepts cage nuts, U markings on front and rear of each rail.

Depth markings included on frame for easy alignment.

Accessory mounting holes along rails allow for mounting of cable management fingers and tool-less accessories.

Rectangular cutouts for routing cables through 800mm (31.5") wide 19" EIA rails from front to rear or for airflow for side breathing equipment.

Full depth adjustability within the usable space.

PDU / Cable Management Brackets

Two dual purpose full height depth adjustable PDU / Cable Management brackets mounted in the zero U space.

Button mount keyholes throughout to accommodate tool-less button mounting of rack PDUs of various heights.

Accessory mounting holes allow for mounting of tool-less cable management accessories.

Integrated cable tie off positions.

Depth adjustable.

Color

Frame, doors, side panels, top panel, rails and PDU brackets are powder coated RAL 7021 (Black).

Certifications

EIA 310E

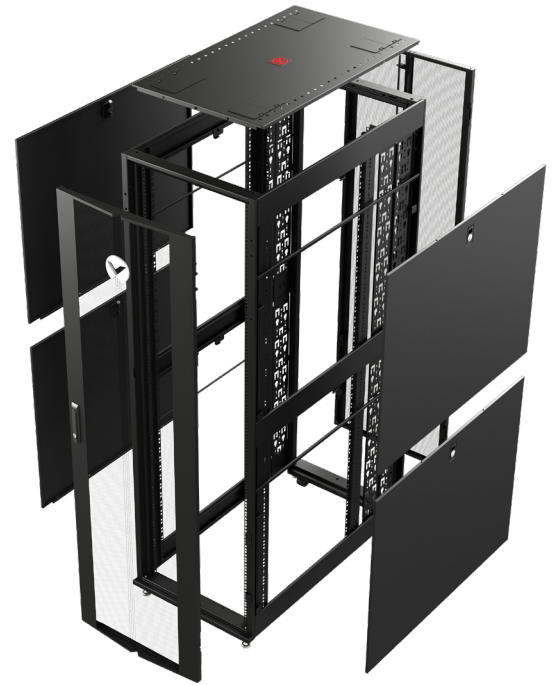
UL2416

RoHS

REACH

The Vertiv™ VR Rack is prepared for high density environments to serve your mission critical needs — even as they evolve and change. The following common dash options give you increased flexibility and allow for customization of the rack to better equip your edge and enterprise locations.

Suffix	Description
-001	No Front Door, No Rear Door, No Right Side Panels, No Left Side Panels
-002	No Front Door, No Rear Door
-003	No Front Door
-004	No Rear Door
-005	No Right Side Panels
-006	No Left Side Panels
-007	No Right Side Panels, No Left Side Panels
-013	No Front Door, No Rear Doors, No Roof, No Side Panels



Rack Weight by Base Model and Option (KG [LB])

Suffix	Standard	-001	-002	-003	-004	-005	-006	-007	-013
VR3100	126.7 [279.3]	78.2 [172.4]	105.8 [233.2]	116.3 [256.4]	116.2 [256.1]	112.9 [248.9]	112.9 [248.9]	99.1 [218.6]	72.5 [159.8]
VR3300	136.9 [301.8]	86.0 [189.5]	116.0 [255.6]	126.5 [278.9]	126.4 [278.6]	121.9 [268.7]	121.9 [268.7]	106.9 [235.7]	79.7 [175.6]
VR3150	161.8 [356.7]	110.8 [244.4]	138.4 [305.1]	150.8 [332.5]	149.4 [329.4]	148.0 [329.3]	148.0 [326.3]	134.2 [295.9]	103.8 [228.9]
VR3350	165.7 [365.3]	112.3 [247.6]	142.3 [313.7]	154.7 [341.1]	153.3 [388.0]	150.7 [332.2]	150.7 [332.2]	135.7 [299.2]	103.8 [228.8]
VR3105	161.8 [356.7]	110.8 [244.4]	138.4 [305.1]	150.8 [332.5]	149.4 [329.4]	148.0 [326.3]	148.0 [326.3]	134.2 [295.9]	103.8 [228.9]
VR3107	162.3 [357.8]	104.2 [229.7]	137.0 [302.0]	149.3 [329.2]	150.0 [330.7]	145.9 [321.7]	145.9 [321.7]	129.5 [285.5]	98.5 [217.2]
VR3305	154.0 [339.5]	103.1 [227.2]	133.1 [293.3]	142.3 [313.7]	143.5 [316.3]	139.0 [306.4]	139.0 [306.4]	124.0 [273.4]	96.8 [213.3]
VR3307	166.0 [366.0]	105.5 [232.6]	140.7 [310.2]	153.0 [337.3]	1537.7 [338.9]	148.4 [327.2]	148.4 [327.2]	130.8 [288.4]	99.2 [218.7]
VR3157	175.7 [387.4]	114.3 [251.9]	147.1 [324.3]	160.7 [354.3]	162.1 [357.3]	159.3 [351.2]	159.3 [351.2]	142.9 [315.0]	107.3 [236.5]
VR3357	179.6 [396.0]	115.8 [255.3]	151.0 [332.9]	164.6 [362.9]	166.0 [365.9]	162.0 [357.1]	162.0 [357.1]	144.4 [318.3]	107.3 [236.5]



*Vertiv™ VR RACK
42U 600W 1100 D
Part #: VR3100*



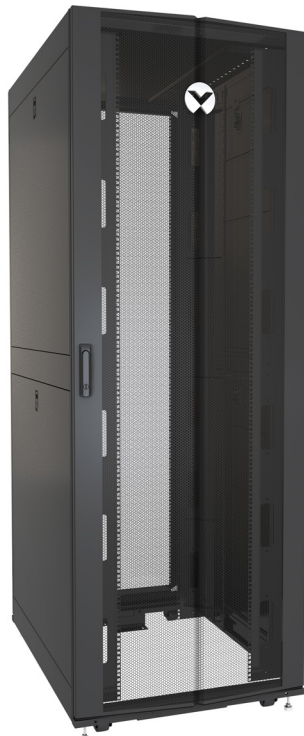
*Vertiv™ VR RACK
42U 600W 1100 D
Part #: VR3105*



*Vertiv™ VR RACK
48U 600W 1100 D
Part #: VR3107*



*Vertiv™ VR RACK
42U 800W 1100 D
Part #: VR3150*



*Vertiv™ VR RACK
48U 800W 1100 D
Part #: VR3157*



*Vertiv™ VR RACK
42U 600W 1200 D
Part #: VR3300*

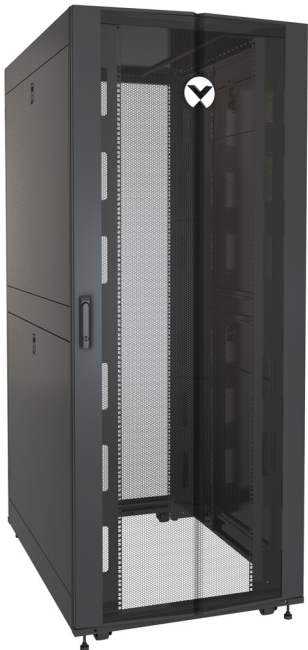
Vertiv™ VR Rack



Vertiv™ VR RACK
45U 600W 1200 D
Part #: VR3305



Vertiv™ VR RACK
48U 600W 1200 D
Part #: VR3307



Vertiv™ VR RACK
42U 800W 1200 D
Part #: VR3350



Vertiv™ VR RACK
48U 800W 1200 D
Part #: VR3357

Cable Management

Horizontal Cable Organizers with Metal D Rings

19" rack mounted cable routing panels with D rings provide the solution for loose cables in the front or rear of your rack. Panels available in 1U and 2U heights. Color: Black.

Part Number	Description
VRA1000	1U Horizontal Cable Organizer with Metal D Rings (Qty. 1)
VRA1001	2U Horizontal Cable Organizer 2U with Metal D Rings (Qty. 1)



VRA1000



VRA1001

Horizontal Cable Managers with Covers

19" Horizontal Cable Manager with cover. Mounts on the EIA rails to easily manage cables. Available with 4" deep or 6" deep finger sections. Color: Black.

Part Number	Description
VRA1002	Horizontal Cable Manager, 1U x 4" Deep, Single-Sided with Cover (Qty. 1)
VRA1003	2U x 4" Deep Horizontal Cable Manager, Single-Sided with Cover (Qty. 1)
VRA1022	2U x 6" Deep Horizontal Cable Manager, Single-Sided with Cover (Qty. 1)
VRA1023	1U x 6" Deep Horizontal Cable Manager, Single-Sided with Cover (Qty. 1)



VRA1002

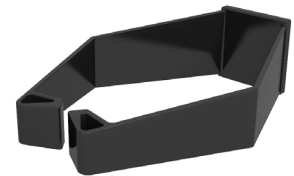


VRA1022

Tool-Less Cable Management: Lobster Claw

1/4 Turn Tool-less Cable Management Lobster Claw offers the ultimate in flexibility in cable management for moves, adds, and changes. Lobster claws install on 19" vertical mounting rails. Claw can also be installed on PDU/cable management rails. Color: black.

Part Number	Description
VRA1004	Tool-Less Cable Management -Lobster Claw (Qty. 10)
VRA1006	Tool -Less Cable Management -Lobster Claw (Qty. 100)



VRA1004

Tool-Less Cable Management: Velcro Strap

1/4 turn tool-less cable management Velcro Straps offers the ultimate in flexibility in cable management. These can be installed on the outside edge of the 19" rail or on the PDU/cable management rail. Color: Black.

Part Number	Description
VRA1005	Tool Less Cable Management - Velcro Strap (Qty. 10)
VRA1007	Tool Less Cable Management - Velcro Strap (Qty. 100)



VRA1005

1/4 Turn Tool-Less Cable Management: D Rings

1/4 Turn Tool-less Cable Management D Rings offer the ultimate in flexibility in cable management. These can be installed on the 19" rail or on the PDU/ Cable Management rail. Color: Black.

Part Number	Description
VRA1008	Tool-less D Rings Small (Qty. 10)
VRA1009	Tool-less D Rings Small (Qty. 100)
VRA1010	Tool-less D Rings Large (Qty. 10)
VRA1011	Tool-less D Rings Large (Qty. 100)



VRA1008 and VRA1009



VRA1010 and VRA1011

Horizontal Cable Manager Side Channel

The Horizontal Cable Manager Side Channel manages cables from the front to rear of 800 wide racks. Depth adjustability allows for installation in racks with different rail spacing. Color: Black.

Part Number	Description
VRA1013	Horizontal Cable Organizer Side Channel 20 to 33 inch adjustment (Qty. 1)
VRA1024	Horizontal Cable Organizer Side Channel 22 to 38 inch adjustment (Qty. 1)



VRA1013

Vertical Cable Management Kit

Vertical Cable Finger Sections can be installed on front or rear 19" rails; Fingers align with "U" marking to create clean cable pathways, providing a vertical row of cable management fingers. The 600 mm wide version has a single row of vertical fingers, the 800mm wide version as two rows. Color: Black.

Part Number	Description
VRA1014	Vertical Cable Manager 600mm Wide 42U (Qty. 2)
VRA1015	Vertical Cable Manager for 600mm Wide 48U (Qty. 2)
VRA1016	Vertical Cable Manager for 800mm Wide 42U (Qty. 2)
VRA1017	Vertical Cable Manager for 800mm Wide 48U (Qty. 2)
VRA1031	45U Vertical Cable Management 800W
VRA1033	45U Vertical Cable Management 600W



VRA1014

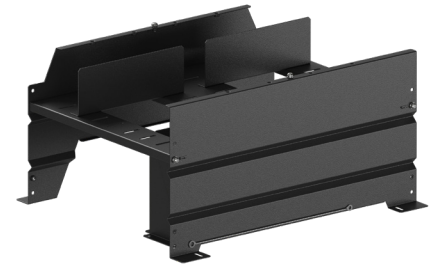


VRA1016

Cable Trough

Cable troughs are an additional assembly fixed on top of a Vertiv™ VR rack allowing the passage of a cable. It is applicable in micro and edge data centers. Color: Black.

Part Number	Description
VRA8581	Cable Trough, 300mm
VRA8561	Cable Trough, 600mm
VRA8571	Cable Trough, 800mm
VRA8567	Cable Trough, End Caps (Set of 2)
VRA8573	Cable Trough Cover, 300mm
VRA8574	Cable Trough Cover, 600mm
VRA8575	Cable Trough Cover, 800mm
VRA8501	Cable Trough, Cable Alignment Kit (Set of 2)
VRA8502	Cable Trough, Connector Kit (Set of 2)
VRA8503	Cable Trough, Cable Separation Kit (Set of 12)
VRA8504	Cable Trough Grounding Wire, 750mm (Set of 10)
VRA8505	Cable Trough, 300mm Height Extension
VRA8506	Cable Trough, 600mm Height Extension



VRA8561 Cable Trough 600mm

Hinged Covers

Snap-on hinge covers for the Vertical Cable Managers conceal cables for a clean, professional look and easy access.

Part Number	Description
VRA1018	Hinged Covers 800mm Wide 42U Vertical Cable Manager (Qty. 2)
VRA1020	Hinged Covers 800mm Wide 48U Vertical Cable Manager (Qty. 2)



VRA1018

Vertical Cable Organizer

Vertical Cable Organizers provide easy cable management solutions for a single rack. Tool-less attaches to the PDU/Cable management brackets providing a vertical cable pathway. Color: Black.

Part Number	Description
VRA1021	Vertical Cable Organizer, 8 Cable Rings, Zero U (Qty. 2)

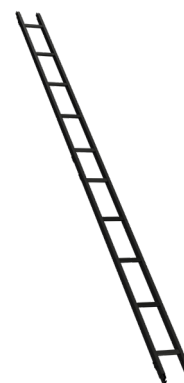


VRA1021

VR Cable Ladder Kit

The VR Cable Ladder Kits and accessories provide easy to install overhead cable management solutions. Adapter and Angle Kits provide the options to customize cable runs for multiple applications. Color: Black.

Part Number	Description
VRA1025	Cable Ladder Rack Kit 6" w/ Install Kit
VRA1026	Cable Ladder Rack Kit 12" w/ Install Kit
VRA1027	Cable Ladder Rack/Wall Management Kit
VRA1028	Cable Ladder Angle Adapter Kit
VRA1029	Cable Ladder Trough Front Adaptor Kit
VRA1030	Cable Ladder Trough End Adaptor Kit
VRA1034	Cable Ladder Suspension Kit
VRA1035	Cable Ladder Stacking Kit



VRA1025

Air Flow Management

Blanking Panels

A frequently over looked component in air flow management, blanking panels allow you to close unused U space within the rack. Promoting proper airflow, and minimizing bypass air. Color: Black.

Part Number	Description
VRA2000	1U 19" Black Plastic Tool Less Airflow Blanking Panel (Qty. 10)
VRA2001	1U 19" Black Plastic Tool Less Airflow Blanking Panel (Qty. 200)
VRA2002	19" Sheet Metal Airflow Blanking Panel Kit (1U, 2U, 4U, 8U) Black (Qty. 1 ea. Size)
VRA2003	1U 19" Sheet Metal Airflow Blanking Panel Kit Black (Qty. 2) Black
VRA2013	2U Blanking Panel, QTY 10
VRA2014	2U Blanking Panel, QTY 100



VRA2002

Air Recirculation Prevention Kit

Prevent air recirculation within the rack by filling the space between the 19" rails and side panels on 600 mm and 800 mm wide racks. Color: Black.

Part Number	Description
VRA2004	Air Recirculation Prevention Kit



VRA2004

19" Rail Brush Strips

The 19" Rail Brush Strips prevent air recirculation within the rack by sealing the cable pass through holes on 800 mm wide 19" rails. Color: Black.

Part Number	Description
VRA2005	19" Rail Brush Strips, 800mm Wide (Qty. 12)

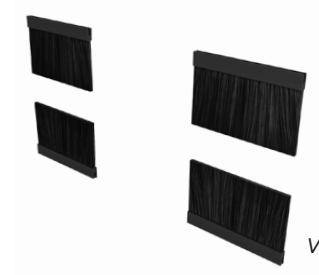


VRA2005

Cable Pass Through Brush Kit for Top Panel

The Cable Pass Through Brush Kit for Top Panels allow cabling to enter the rack while restricting by pass air. Color: Black.

Part Number	Description
VRA2006	Cable Pass Through Brush Kit for Top Panel (Qty. 8)



VRA2006

VR Roof Fan

The VR Roof Fan increases airflow from the bottom to the top of the rack. Needs to be paired with the Networking Roof Panel.

Part Number	Description
VRA2007	Top Fan Kit 120 VAC 50/60 Hz
VRA2008	Top Fan Kit 208-230 VAC 50/60 Hz



VRA2007

Vertical Exhaust Duct

The Vertical Exhaust Duct provides any easy solution to return hot air back to a room cooling system. Needs to be paired with the Networking Roof Panel.

Part Number	Description
VRA2009	Vertical Exhaust Duct Short, 600W
VRA2010	Vertical Exhaust Duct Tall, 600W
VRA2011	Vertical Exhaust Duct Short, 800W
VRA2012	Vertical Exhaust Duct Tall, 800W



VRA2009

Doors and Security

Handle Options

Interchange rack handles for various degrees of security.

Part Number	Description
VRA6023	Combination Lock Handle (Qty. 2)
VRA7001	Security Handle Combination (2)
VRA7002	Security Handle Fingerprint + RFID (1)
VRA7003	Security Handle Pin Pad + RFID (1)



VRA6023



VRA7003

Single & Split Doors

Solid door options offer additional security for the Vertiv™ VR Racks.

Color: Black.

Part Number	Description
VRA6050	Full Metal Door 42U x 600
VRA6051	Full Metal Door 42U x 800
VRA6052	Full Metal Door 48U x 600
VRA6053	Full Metal Door 48U x 800
VRA6056	Split Metal Door 48U x 600
VRA6057	Split Metal Door 48U x 800
VRA6062	Split Metal Door 42U x 600
VRA6063	Split Metal Door 42U x 800



VRA6063

Colocation Kit

Upgrade your existing Vertiv VR Rack to a dual tenant rack to maximize your data center floor space. Colocation kits include dual front and rear doors, secure cable management, and dividing panels. Color: Black.

Part Number	Description	Available U Space
VRA9040	Colocation Rack Accessory 42U x 600 x 1100	20U (Top) / 19U (Bottom)
VRA9041	Colocation Rack Accessory 42U x 600 x 1200	20U (Top) / 19U (Bottom)
VRA9042	Colocation Rack Accessory 48U x 600 x 1100	23U (Top) / 22U (Bottom)
VRA9043	Colocation Rack Accessory 48U x 600 x 1200	23U (Top) / 22U (Bottom)
VRA9044	Colocation Rack Accessory 42U x 800 x 1100	20U (Top) / 19U (Bottom)
VRA9045	Colocation Rack Accessory 42U x 800 x 1200	20U (Top) / 19U (Bottom)
VRA9046	Colocation Rack Accessory 48U x 800 x 1100	23U (Top) / 22U (Bottom)
VRA9047	Colocation Rack Accessory 48U x 800 x 1200	23U (Top) / 22U (Bottom)



VRA9046

Shelves and Support Brackets

19" Depth Adjustable Fixed Shelf 250lbs Black

The 19" Fixed Tool-less Shelf can be used for non 19" rack mount equipment or as additional support for 19" rack mount equipment. The shelves have an adjustable installation depth from 27.6"(700mm) to 33.6"(854mm)D. Color: Black.

Part Number	Description
VRA3000	1U Depth Adjustable Fixed shelf 250lbs Black (Qty. 1)

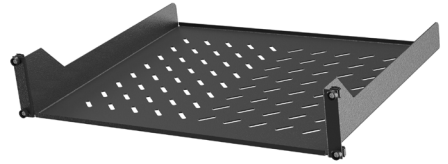


VRA3000

2U 19" Cantilever Fixed Shelf 50Lbs Black

Enables the mounting of a monitor or other equipment into the rack environment. Color: Black.

Part Number	Description
VRA3001	2U 19" Cantilever Fixed Shelf 50lbs Black (Qty. 1)

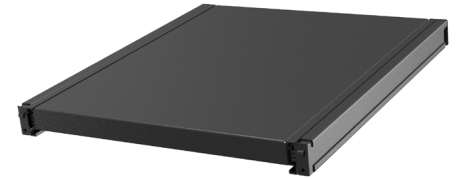


VRA3001

1U Depth Adjustable Sliding Shelf 200lbs Black

The 19" Telescopic Shelf utilizes high quality bearing slide rails to provide smooth and convenient action. Depth adjustability range from 21.7"(550mm) to 33.6"(854mm)D. Color: Black.

Part Number	Description
VRA3002	1U Depth Adjustable Sliding Shelf 100lbs Black (Qty. 1)
VRA3003	1U Depth Adjustable Sliding Shelf 200lbs Black (Qty. 1)



VRA3003

1U Depth Adjustable Equipment Support Rails 100lbs

When additional support is needed for heavy loads, our support rails provide a suitable option. Depth Adjustable from 28.5"(724mm) to 31.6"(803mm), the rails mount into the 19" rail side flanges and can support loads up to 100lbs (45kg).

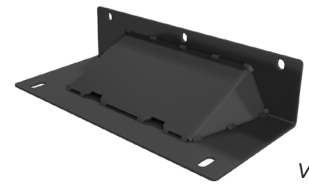
Part Number	Description
VRA3004	1U Depth Adjustable Equipment Support Rails 100lbs (Qty. 2)



VRA3004

Bolt Down Brackets

Bolt Down Brackets are used to secure rack to data center floor when anti-tip is required. Brackets are included with shipment of rack. Additional brackets can be ordered. Color: Black.

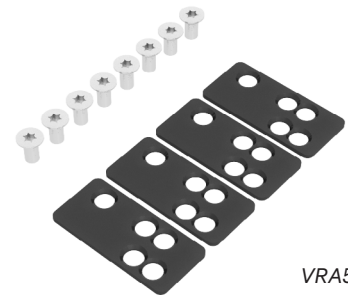


VRA4001

Part Number	Description
VRA4001	VR Anti Tip Stabilizer Plate for 600mm/800mm Wide cabinets (Qty. 2)

Baying and Hardware

Baying Hardware Kits come standard with every Vertiv™ VR Rack. Additional kits may be purchased if the original brackets have been misplaced. When baying racks together on 24-in. centers, use a Baying Gasket Kit to seal the gap between the racks to maintain proper air circulation.

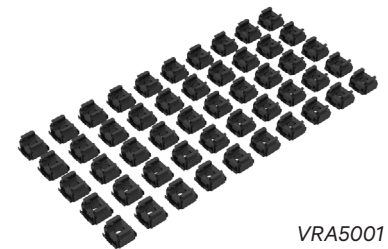


VRA5002

Part Number	Description
VRA5002	Baying Kit: Baying Hardware Kit (1 Kit)
VRA5003	Baying Gasket kit for use when baying racks on 24" centers

Mounting Hardware

One set included with each rack. Includes 50 each M6 cage nuts and plastic cup washers with matching screws. Includes one cage nut installation/removal tool. Additional packs of hardware can be ordered if needed.

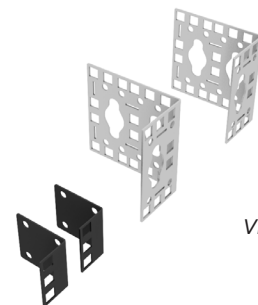


VRA5001

Part Number	Description
VRA5001	10-32 Cage Nuts (Qty. 50)
VRA5000	Mounting Hardware (Qty. 50 M6 cage nuts, screws, washers)

Zero U Accessory Mounting Bracket (Qty. 2)

Installs in various locations within the rack, providing mounting options for rack PDUs and other small accessories.



VRA5004

Part Number	Description
VRA5004	Zero U Accessory Mounting Bracket (Qty. 2)

Rack Components

Pass Through Side Panels

Pass Through Side Panels can replace existing side panels and allow for cabling between rack while also keeping them thermally separated. Brush strips included. Color: Black.

Part Number	Description
VRA6054	Pass-Through Side Panels 42U x 1100
VRA6055	Pass-Through Side Panels 42U x 1200
VRA6029	Pass-Through Side Panels 45U x 1100
VRA6030	Pass-Through Side Panels 45U x 1200
VRA6031	Pass-Through Side Panels 48U x 1100
VRA6032	Pass-Through Side Panels 48U x 1200



VRA6030

Networking Roof Panels

The Networking Roof Panels can replace the existing roof and allows for edge-to-edge cable management. It includes brush strips and can also be paired with fan kit and exhaust duct for additional air flow management.

Part Number	Description
VRA6033	Networking Roof Panel 600 x 1100
VRA6034	Networking Roof Panel 600 x 1200
VRA6035	Networking Roof Panel 800 x 1100
VRA6036	Networking Roof Panel 800 x 1200



VRA6033

Rack Bottom Panel

The Rack Bottom Panel closes off the bottom of the rack and includes cable pass through openings with brushes.

Part Number	Description
VRA6037	Rack Bottom Panel 600 x 1100
VRA6038	Rack Bottom Panel 600 x 1200
VRA6039	Rack Bottom Panel 800 x 1100
VRA6040	Rack Bottom Panel 800 x 1200



VRA6038

Rail Conversion Kit

The Rail Conversion Kit complements 800mm wide racks and allows exchange out of 19" EIA rails to 21" EIA rails or 23" EIA rails on center.

Part Number	Description
VRA6044	Rail Conversion Kit 42U , 21" EIA Mounting Rails 800mm
VRA6045	Rail Conversion Kit 45U , 21" EIA Mounting Rails 800mm
VRA6048	Rail Conversion Kit 48U , 21" EIA Mounting Rails 800mm
VRA6047	Rail Conversion Kit 42U , 23" EIA Mounting Rails 800mm
VRA6046	Rail Conversion Kit 45U , 23" EIA Mounting Rails 800mm
VRA6049	Rail Conversion Kit 48U , 23" EIA Mounting Rails 800mm



VRA6048

Copper Bus Bar Kit

Common ground providing a central location for bonding equipment.

Part Number	Description
VRA6042	Copper BUS Bar 42U
VRA6043	Copper BUS Bar 48U



VRA6042

Depth Extension

Add 200 mm of extended depth to your Vertiv™ VR rack. Depth Extension includes door relocation kit and extra PDU mounting locations.. Color: Black.

Part Number	Description
VRA3005	Depth Extension 42U x 600 x 200
VRA3006	Depth Extension 42U x 800 x 200
VRA3007	Depth Extension 48U x 600 x 200
VRA3008	Depth Extension 48U x 800 x 200



VRA3005

Rack Base

Increase the height of your rack by 100mm to provide additional cabling beneath the Vertiv VR Rack. Rack bases can be stacked for a total of 200mm of height and can support up to the full static load rating (1360kg/3000lb) of the standard VR rack. Color: Black.

Part Number	Description
VRA3009	VR 100x600x1100 Rack Base
VRA3010	VR 100x800x1100 Rack Base
VRA3011	VR 100x600x1200 Rack Base
VRA3012	VR 100x800x1200 Rack Base



VRA3010

Cable Management Accessories

SKU	Description	VR3100	VR3300	VR3150	VR3350	VR3105	VR3305	VR3107	VR3307	VR3157	VR3357
Horizontal Cable Management											
VRA1000	1U Horizontal Cable Organizer with Metal D Rings (Qty. 1)	✓	✓	✓	✓	✓	✓	✓	✓	✓	✓
VRA1001	2U Horizontal Cable Organizer 2U with Metal D Rings (Qty. 1)	✓	✓	✓	✓	✓	✓	✓	✓	✓	✓
VRA1002	Horizontal Cable Manager, 1U x 4" Deep, Single-Sided with Cover (Qty. 1)	✓	✓	✓	✓	✓	✓	✓	✓	✓	✓
VRA1003	2U x 4" Deep Horizontal Cable Manager, Single-Sided with Cover (Qty. 1)	✓	✓	✓	✓	✓	✓	✓	✓	✓	✓
VRA1022	2U x 6" Deep Horizontal Cable Manager, Single-Sided with Cover (Qty. 1)	✓	✓	✓	✓	✓	✓	✓	✓	✓	✓
VRA1023	1U x 6" Deep Horizontal Cable Manager, Single-Sided with Cover (Qty. 1)	✓	✓	✓	✓	✓	✓	✓	✓	✓	✓
VRA1013	Horizontal Cable Organizer Side Channel 20 to 33 inch adjustment (Qty. 1)			✓	✓					✓	✓
VRA1024	Horizontal Cable Organizer Side Channel 22 to 38 inch adjustment (Qty. 1)			✓	✓					✓	✓
Tool-Less Cable Management											
VRA1004	Tool-Less Cable Management -Lobster Claw (Qty. 10)	✓	✓	✓	✓	✓	✓	✓	✓	✓	✓
VRA1006	Tool -Less Cable Management -Lobster Claw (Qty. 100)	✓	✓	✓	✓	✓	✓	✓	✓	✓	✓
VRA1005	Tool Less Cable Management - Velcro Strap (Qty. 10)	✓	✓	✓	✓	✓	✓	✓	✓	✓	✓
VRA1007	Tool Less Cable Management - Velcro Strap (Qty. 100)	✓	✓	✓	✓	✓	✓	✓	✓	✓	✓
VRA1008	Tool-less D Rings Small (Qty. 10)	✓	✓	✓	✓	✓	✓	✓	✓	✓	✓
VRA1009	Tool-less D Rings Small (Qty. 100)	✓	✓	✓	✓	✓	✓	✓	✓	✓	✓
VRA1010	Tool-less D Rings Large (Qty. 10)	✓	✓	✓	✓	✓	✓	✓	✓	✓	✓
VRA1011	Tool-less D Rings Large (Qty. 100)	✓	✓	✓	✓	✓	✓	✓	✓	✓	✓
Vertical Cable Management											
VRA1014	Vertical Cable Manager 600mm Wide 42U (Qty. 2)	✓	✓								
VRA1015	Vertical Cable Manager for 600mm Wide 48U (Qty. 2)							✓	✓		
VRA1016	Vertical Cable Manager for 800mm Wide 42U (Qty. 2)			✓	✓						
VRA1017	Vertical Cable Manager for 800mm Wide 48U (Qty. 2)									✓	✓
VRA1018	Hinged Covers 800mm Wide 42U Vertical Cable Manager (Qty. 2)			✓	✓						
VRA1020	Hinged Covers 800mm Wide 48U Vertical Cable Manager (Qty. 2)									✓	✓
VRA1021	Vertical Cable Organizer, 8 Cable Rings, Zero U (Qty. 2)	✓	✓	✓	✓	✓	✓	✓	✓	✓	✓
VRA1031	45U Vertical Cable Management 800W					✓	✓				
VRA1033	45U Vertical Cable Management 600W					✓	✓				

Cable Management Accessories (cont'd)

SKU	Description	VR3100	VR3300	VR3150	VR3350	VR3105	VR3305	VR3107	VR3307	VR3157	VR3357
Cable Trough											
VRA8581	VR Cable Trough, 300mm										
VRA8561	VR Cable Trough, 600mm	✓	✓			✓	✓	✓	✓		
VRA8571	VR Cable Trough, 800mm			✓	✓					✓	✓
VRA8567	VR Cable Trough, End Caps (Set of 2)	✓	✓	✓	✓	✓	✓	✓	✓	✓	✓
VRA8573	VR Cable Trough Cover, 300mm										
VRA8574	VR Cable Trough Cover, 600mm	✓	✓			✓	✓	✓	✓		
VRA8575	VR Cable Trough Cover, 800mm			✓	✓					✓	✓
VRA8501	VR Cable Trough, Cable Alignment Kit (Set of 2)	✓	✓	✓	✓	✓	✓	✓	✓	✓	✓
VRA8502	VR Cable Trough, Connector Kit (Set of 2)	✓	✓	✓	✓	✓	✓	✓	✓	✓	✓
VRA8503	VR Cable Trough, Cable Separation Kit (Set of 12)	✓	✓	✓	✓	✓	✓	✓	✓	✓	✓
VRA8504	VR Cable Trough Grounding Wire, 750mm (Set of 10)	✓	✓	✓	✓	✓	✓	✓	✓	✓	✓
VRA8505	VR Cable Trough, 300mm Height Extension										
VRA8506	VR Cable Trough, 600mm Height Extension	✓	✓			✓	✓	✓	✓		
Cable Ladder Kit											
VRA1025	Cable Ladder Rack Kit 6" w/ Install Kit	✓	✓	✓	✓	✓	✓	✓	✓	✓	✓
VRA1026	Cable Ladder Rack Kit 12" w/ Install Kit	✓	✓	✓	✓	✓	✓	✓	✓	✓	✓
VRA1027	Cable Ladder Rack/Wall Management Kit	✓	✓	✓	✓	✓	✓	✓	✓	✓	✓
VRA1028	Cable Ladder Angle Adapter Kit	✓	✓	✓	✓	✓	✓	✓	✓	✓	✓
VRA1029	Cable Ladder Trough Front Adaptor Kit	✓	✓	✓	✓	✓	✓	✓	✓	✓	✓
VRA1030	Cable Ladder Trough End Adaptor Kit	✓	✓	✓	✓	✓	✓	✓	✓	✓	✓
VRA1034	Cable Ladder Suspension Kit	✓	✓	✓	✓	✓	✓	✓	✓	✓	✓
VRA1035	Cable Ladder Stacking Kit	✓	✓	✓	✓	✓	✓	✓	✓	✓	✓

Airflow Management

SKU	Description	VR3100	VR3300	VR3150	VR3350	VR3105	VR3305	VR3107	VR3307	VR3157	VR3357
Blanking Panels											
VRA2000	1U 19" Black Plastic Tool Less Airflow Blanking Panel (Qty. 10)	✓	✓	✓	✓	✓	✓	✓	✓	✓	✓
VRA2001	1U 19" Black Plastic Tool Less Airflow Blanking Panel (Qty. 200)	✓	✓	✓	✓	✓	✓	✓	✓	✓	✓
VRA2002	19" Sheet Metal Airflow Blanking Panel Kit (1U, 2U, 4U, 8U) Black (Qty. 1 ea. Size)	✓	✓	✓	✓	✓	✓	✓	✓	✓	✓
VRA2003	1U 19" Sheet Metal Airflow Blanking Panel Kit Black (Qty. 2) Black	✓	✓	✓	✓	✓	✓	✓	✓	✓	✓
VRA2013	2U 19" Black Plastic Tool Less Airflow Blanking Panel (Qty. 10)	✓	✓	✓	✓	✓	✓	✓	✓	✓	✓
VRA2014	2U 19" Black Plastic Tool Less Airflow Blanking Panel (Qty. 100)	✓	✓	✓	✓	✓	✓	✓	✓	✓	✓
Air Recirculation Prevention Kit											
VRA2004	Air Recirculation Prevention Kit	✓	✓	✓	✓	✓	✓	✓	✓	✓	✓
Brush Strips											
VRA2005	19" Rail Brush Strips, 800mm Wide (Qty. 12)			✓	✓					✓	✓
VRA2006	Cable Pass Through Brush Kit for Top Panel (Qty. 8)	✓	✓	✓	✓	✓	✓	✓	✓	✓	✓
Roof Fan Kit											
VRA2007	Top Fan Kit 115 VAC 50/60 Hz	✓	✓	✓	✓	✓	✓	✓	✓	✓	✓
VRA2008	Top Fan Kit 220-230 VAC 50/60 Hz	✓	✓	✓	✓	✓	✓	✓	✓	✓	✓
Vertical Exhaust Duct											
VRA2009	Vertical Exhaust Duct Short, 600W	✓	✓			✓	✓	✓	✓		
VRA2010	Vertical Exhaust Duct Tall, 600W	✓	✓			✓	✓	✓	✓		
VRA2011	Vertical Exhaust Duct Short, 800W			✓	✓					✓	✓
VRA2012	Vertical Exhaust Duct Tall, 800W			✓	✓					✓	✓

Shelves, Mounting, and Hardware

SKU	Description	VR3100	VR3300	VR3150	VR3350	VR3105	VR3305	VR3107	VR3307	VR3157	VR3357
Shelves and Support Brackets											
VRA3000	1U Depth Adjustable Fixed shelf 250lbs Black (Qty. 1)	✓	✓	✓	✓	✓	✓	✓	✓	✓	✓
VRA3001	2U 19" Cantilever Fixed Shelf 50lbs Black (Qty. 1)	✓	✓	✓	✓	✓	✓	✓	✓	✓	✓
VRA3002	1U Depth Adjustable Sliding Shelf 100lbs Black (Qty. 1)	✓	✓	✓	✓	✓	✓	✓	✓	✓	✓
VRA3003	1U Depth Adjustable Sliding Shelf 200lbs Black (Qty. 1)	✓	✓	✓	✓	✓	✓	✓	✓	✓	✓
VRA3004	1U Depth Adjustable Equipment Support Rails 100lbs (Qty. 2)	✓	✓	✓	✓	✓	✓	✓	✓	✓	✓
Anchoring											
VRA4000	VR Bolt Down Brackets	✓	✓	✓	✓	✓	✓	✓	✓	✓	✓
VRA4001	VR Anti Tip Stabilizer Plate for 600mm/800mm Wide cabinets (Qty. 2)	✓	✓	✓	✓	✓	✓	✓	✓	✓	✓
VRA4002	VR Seismic Bolt Down Bracket – 600mm Rack	✓	✓			✓	✓	✓	✓		
VRA4003	VR Seismic Bolt Down Bracket – 800mm Rack			✓	✓					✓	✓
Baying and Hardware											
VRA5002	VR Baying Kit	✓	✓	✓	✓	✓	✓	✓	✓	✓	✓
VRA5003	VR Baying Gasket kit for use when baying racks on 24" centers	✓	✓	✓	✓	✓	✓	✓	✓	✓	✓
VRA5001	10-32 Cage Nuts (Qty. 50)	✓	✓	✓	✓	✓	✓	✓	✓	✓	✓
VRA5000	M6 Cage Nuts, Screws (Qty. 50)	✓	✓	✓	✓	✓	✓	✓	✓	✓	✓
VRA5004	Zero U Accessory Mounting Bracket (Qty. 2)	✓	✓	✓	✓	✓	✓	✓	✓	✓	✓

Doors and Security Handles

SKU	Description	VR3100	VR3300	VR3150	VR3350	VR3105	VR3305	VR3107	VR3307	VR3157	VR3357
Security Handles											
VRA6022	VR Door Handle	✓	✓	✓	✓	✓	✓	✓	✓	✓	✓
VRA6023	Combination Lock Handle (Qty.2)	✓	✓	✓	✓	✓	✓	✓	✓	✓	✓
VRA7001	Security Handles Combination (2)	✓	✓	✓	✓	✓	✓	✓	✓	✓	✓
VRA7002	Security Handle Fingerprint + RFID (1)	✓	✓	✓	✓	✓	✓	✓	✓	✓	✓
VRA7003	Security Handle Pin Pad + RFID (1)	✓	✓	✓	✓	✓	✓	✓	✓	✓	✓
Single Perforated Doors											
VRA6001	VR 42Ux600 Single Perf Door Blk	✓	✓								
VRA6002	VR 42Ux800 Single Perf Door Blk			✓	✓						
VRA6003	VR 48Ux600 Single Perf Door Blk							✓	✓		
VRA6004	VR 48Ux800 Single Perf Door Blk									✓	✓
Split Perforated Doors											
VRA6005	VR 42Ux600 Split Perf Doors Blk	✓	✓								
VRA6006	VR 42Ux800 Split Perf Doors Blk			✓	✓						
VRA6007	VR 48Ux600 Split Perf Doors Blk							✓	✓		
VRA6008	VR 48Ux800 Split Perf Doors Blk									✓	✓
Single Solid Door											
VRA6050	Full Metal Door 42U x 600	✓	✓								
VRA6051	Full Metal Door 42U x 800			✓	✓						
VRA6052	Full Metal Door 48U x 600							✓	✓		
VRA6053	Full Metal Door 48U x 800									✓	✓
Split Solid Doors											
VRA6056	Split Metal Door 48U x 600							✓	✓		
VRA6057	Split Metal Door 48U x 800									✓	✓
VRA6062	Split Metal Door 42U x 600	✓	✓								
VRA6063	Split Metal Door 42U x 800			✓	✓						
Colocation Kit											
VRA9040	Colocation Rack Accessory 42U x 600 x 1100	✓									
VRA9041	Colocation Rack Accessory 42U x 600 x 1200		✓								
VRA9042	Colocation Rack Accessory 42U x 800 x 1100			✓							
VRA9043	Colocation Rack Accessory 42U x 800 x 1200				✓						
VRA9044	Colocation Rack Accessory 48U x 600 x 1100							✓			
VRA9045	Colocation Rack Accessory 48U x 600 x 1200								✓		
VRA9046	Colocation Rack Accessory 48U x 800 x 1100									✓	
VRA9047	Colocation Rack Accessory 48U x 800 x 1200										✓

Rack Components

SKU	Description	VR3100	VR3300	VR3150	VR3350	VR3105	VR3305	VR3107	VR3307	VR3157	VR3357
Split Side Panels											
VRA6009	VR 42Ux1100 Split Side Panels	✓		✓							
VRA6010	VR 42Ux1200 Split Side Panels		✓		✓						
VRA6011	VR 48Ux1100 Split Side Panels							✓		✓	
VRA6012	VR 48Ux1200 Split Side Panels								✓		✓
Pass-Through Side Panels											
VRA6054	Pass-Through Side Panels 42U x 1100	✓		✓							
VRA6055	Pass-Through Side Panels 42U x 1200		✓		✓						
VRA6029	Pass-Through Side Panels 45U x 1100					✓					
VRA6030	Pass-Through Side Panels 45U x 1200						✓				
VRA6031	Pass-Through Side Panels 48U x 1100							✓		✓	
VRA6032	Pass-Through Side Panels 48U x 1200								✓		✓
Server Rails											
VRA6013	VR 42Ux600 19" Rails	✓	✓								
VRA6014	VR 42Ux800 19" Rails			✓	✓						
VRA6015	VR 48Ux600 19" Rails							✓	✓		
VRA6016	VR 48Ux800 19" Rails									✓	✓
Top Panels											
VRA6017	VR 600x1100 Top Panel	✓				✓		✓			
VRA6018	VR 800x1100 Top Panel			✓						✓	
VRA6019	VR 600x1200 Top Panel		✓				✓		✓		
VRA6020	VR 800x1200 Top Panel				✓						✓
VRA6021	VR Top Panel Grommets	✓	✓	✓	✓	✓	✓	✓	✓	✓	✓
Networking Roof Panel											
VRA6033	Networking Roof Panel 600 x 1100	✓				✓		✓			
VRA6034	Networking Roof Panel 600 x 1200		✓				✓		✓		
VRA6035	Networking Roof Panel 800 x 1100			✓						✓	
VRA6036	Networking Roof Panel 800 x 1200				✓						✓
Bottom Panels											
VRA6037	Rack Bottom Panel 600 x 1100	✓				✓		✓			
VRA6038	Rack Bottom Panel 600 x 1200		✓				✓		✓		
VRA6039	Rack Bottom Panel 800 x 1100			✓						✓	
VRA6040	Rack Bottom Panel 800 x 1200				✓						✓

Rack Components (cont'd)

SKU	Description	VR3100	VR3300	VR3150	VR3350	VR3105	VR3305	VR3107	VR3307	VR3157	VR3357
Depth Extensions											
VRA3005	Depth Extension 42U x 600 x 200	✓	✓								
VRA3006	Depth Extension 42U x 800 x 200			✓	✓						
VRA3007	Depth Extension 48U x 600 x 200							✓	✓		
VRA3008	Depth Extension 48U x 800 x 200									✓	✓
Rack Base											
VRA3009	VR 100x600x1100 Rack Base	✓				✓		✓			
VRA3010	VR 100x800x1100 Rack Base			✓						✓	
VRA3011	VR 100x600x1200 Rack Base		✓				✓		✓		
VRA3012	VR 100x800x1200 Rack Base				✓						✓
Rail Conversion Kits											
VRA6044	Rail Conversion Kit 42U , 21" EIA Mounting Rails 800mm			✓	✓						
VRA6045	Rail Conversion Kit 45U , 21" EIA Mounting Rails 800mm										
VRA6048	Rail Conversion Kit 48U , 21" EIA Mounting Rails 800mm									✓	✓
VRA6047	Rail Conversion Kit 42U , 23" EIA Mounting Rails 800mm			✓	✓						
VRA6046	Rail Conversion Kit 45U , 23" EIA Mounting Rails 800mm										
VRA6049	Rail Conversion Kit 48U , 23" EIA Mounting Rails 800mm									✓	✓
Casters											
VRA6024	VR Caster Kit	✓	✓	✓	✓	✓	✓	✓	✓	✓	✓
PDU/Cable Management Brackets											
VRA6025	VR 42U 4" PDU/Cable Mgt Brackets	✓	✓	✓	✓						
VRA6026	VR 48U 4" PDU/Cbl Mgt Bracket							✓	✓	✓	✓
Copper Busbar											
VRA6042	Copper Busbar 42U	✓	✓	✓	✓						
VRA6043	Copper Busbar 48U							✓	✓	✓	✓



Vertiv.com | Vertiv Headquarters, 505 N Cleveland Ave, Westerville, OH 43082, USA

© 2025 Vertiv Group Corp. All rights reserved. Vertiv™ and the Vertiv logo are trademarks or registered trademarks of Vertiv Group Corp. All other names and logos referred to are trade names, trademarks or registered trademarks of their respective owners. While every precaution has been taken to ensure accuracy and completeness here, Vertiv Group Corp. assumes no responsibility, and disclaims all liability, for damages resulting from use of this information or for any errors or omissions. Specifications, rebates and other promotional offers are subject to change at Vertiv's sole discretion upon notice.