

Vertiv™ CoolPhase Wall Condensate Pump Kit



Quick Installation Guide For Part Number: WLMPPMKIT

Components:

Item	Description	Qty.
1	Condensate Pump kit (factory assembled)	1

Item Parts:

Item	Description	Item	Description
1	Piping Inlet	6	Assembled pump
2	Cable outlet	7	Power cable
3	Assembled reservoir	8	Water drain (length: 1.5m)
4	Communication cable	9	Metal pump case
5	Connection pipe		

* M4x50mm expansion bolts and Worm clamps (not included)

Usage Scenarios:

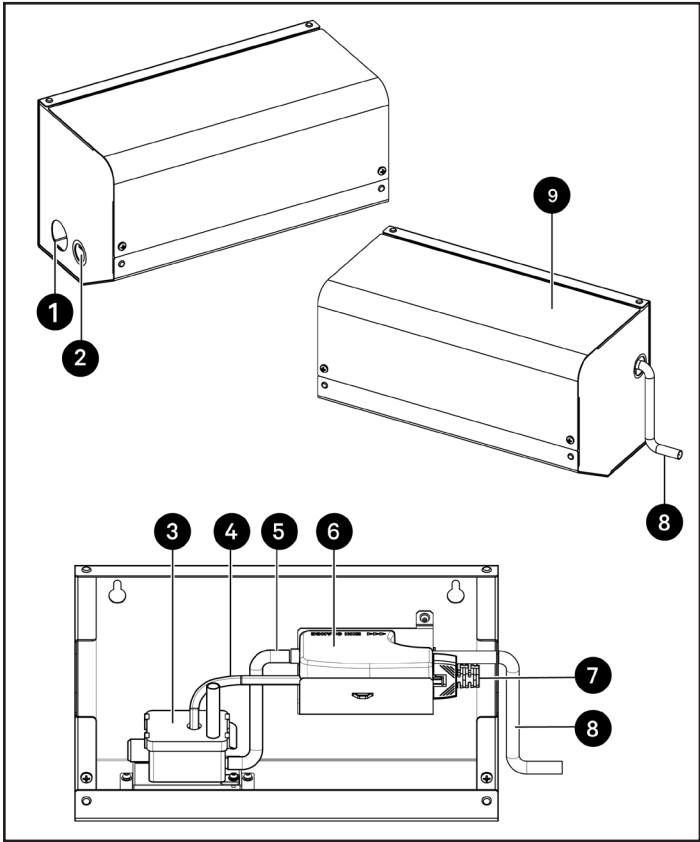
Part Number	Applicable To	SKU
WLMPPMKIT	VERTIV™ CoolPhase Wall	WLM030A
		WLM070A
		WLM110A

NOTE: Take into consideration the weight and dimensions of the Condensate pump kit:

Weight	Dimension
2.45 kg (5.4 lb)	300x144.8x159.5 mm (11.8x5.7x6.3 in)

Considerations:

- The condensate pump kit should be installed on a leveled position on the bottom right and left side of the indoor unit below the drain hose outlet. NOTE: The cable (included) which connects the indoor unit terminal block and the pump is 1.5m length.
- Pump designed with a 6 mm (1/4 in) I.D. water drain size and a 5 m (16.40 ft) head measured from the discharge of the pump.

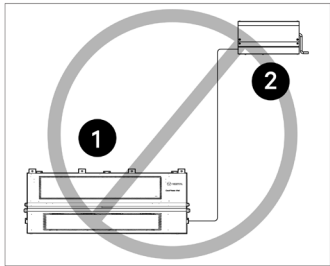
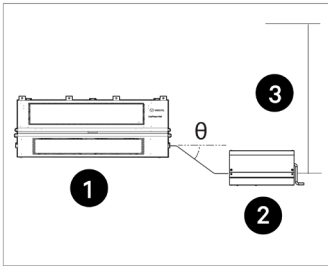
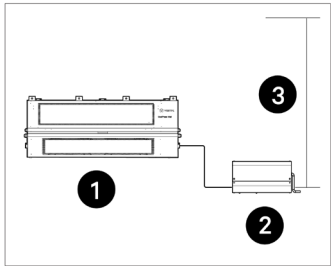


Preparation before installation:

Although the condensate pump kit is a factory assembled kit, for better field installation these materials should be prepared:

1. 2pcs M4X50mm expansion bolts
2. Drainpipe I.D. 16mm
3. Drainpipe I.D. 6mm (if necessary)
4. A mental clamp

- The drain of the indoor unit should follow a slant of at least 5° from its outlet to the pump inlet to allow water to flow correctly and fill the pump water reservoir.
- Note: The length of the 16mm I.D. pipe (between the unit and the pump kit), should not exceed 850mm.

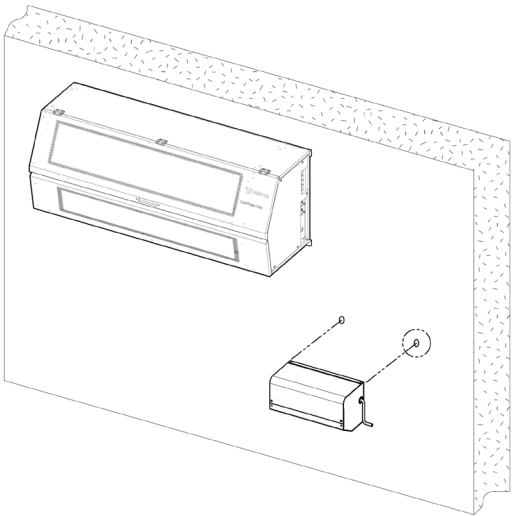


Item	Description	Qty.	
1	Indoor unit	3	Pump head: 5m (16.40 ft.), limitation: 6 mm I.D. pipe
2	Condensate pump kit	θ	Min. slant angle: 5°

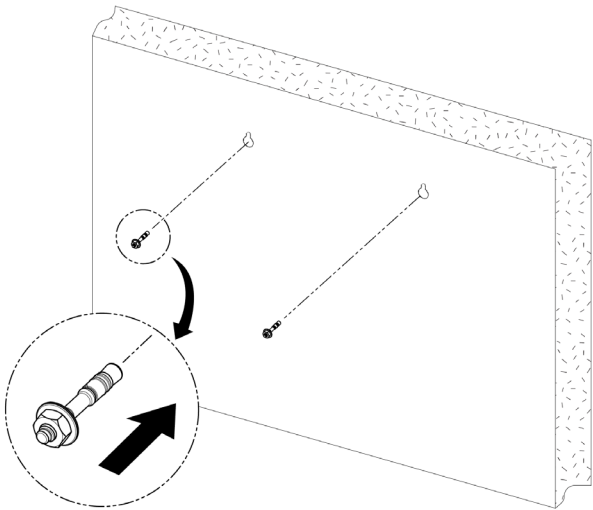
Condensate Pump Kit Installation and Connection

1. Select an appropriate location for the pump kit considering the hose and electrical cable lengths and proper inclination.
Note: The pump inlet must be positioned below the outlet level of the indoor unit.

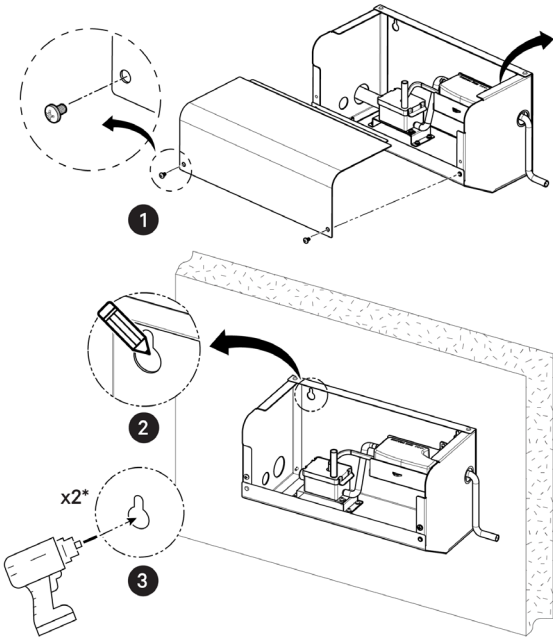
Item	Lenght
Drain pipe	depends on the location caracteristics
Power cable	1.5 m



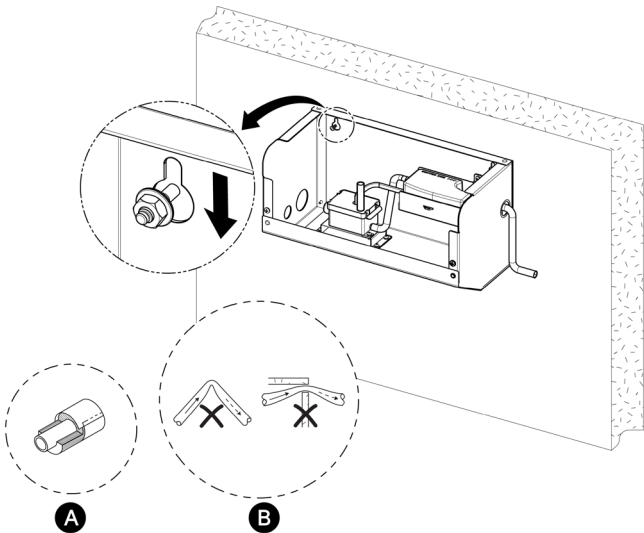
4. Use two (2) M4x50mm expansion bolts (not included) in the perforations for better grip of the fastening method. Place the bolts, leaving a space between the wall and the bolts head of at least the thickness of the sheet.



2. Remove the cover. Mark the points on the wall to be drilled, considering the measurements of the mounting points' location. Confirm that the perforation holes are leveled.
3. Drill the aa using the most appropriate method according to surface material and the size of the screw to be used.



5. Place the pump kit on the screws and push down so that it enters the small slot. If necessary, use two people.
6. Make sure there is no debris or obstructions in the hose.
NOTE: A. Use proper insulation material to wrap the drain pipe.
B. Make sure there is no bending on all pipes.

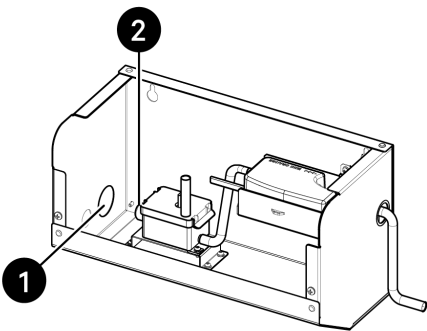
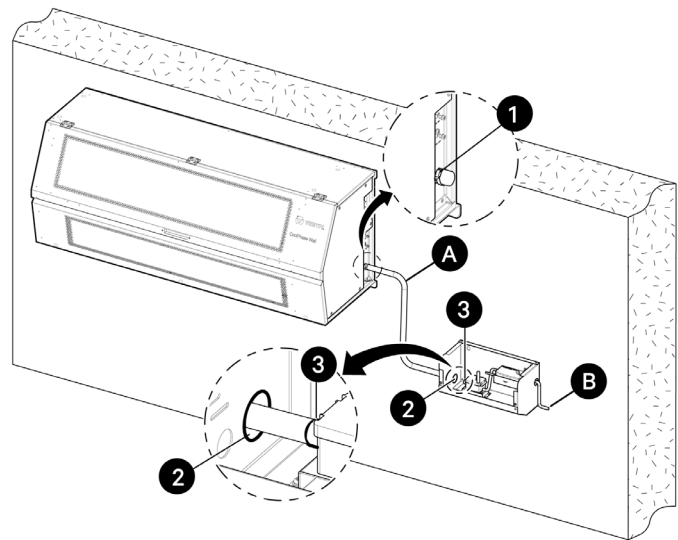


7. Check the orientation of the indoor unit drain pipe. The standard outlet for the indoor unit's drain pipe is located on the right side of the unit. Open the metal clamps reserved at the right side of indoor unit outlet — do not discard it, it will be used in next step. Remove the black rubber cap Connect one end of the Condensate drain pipe A to the indoor unit's outlet

and the other end to the condensate pump. Finally, use the metal clamp to secure the drain pipe A in place.

8. Insert the drain pipe A into the water pump kit from the hole piping inlet 1, and then fix it to the water pump inlet 2 with a clamp.

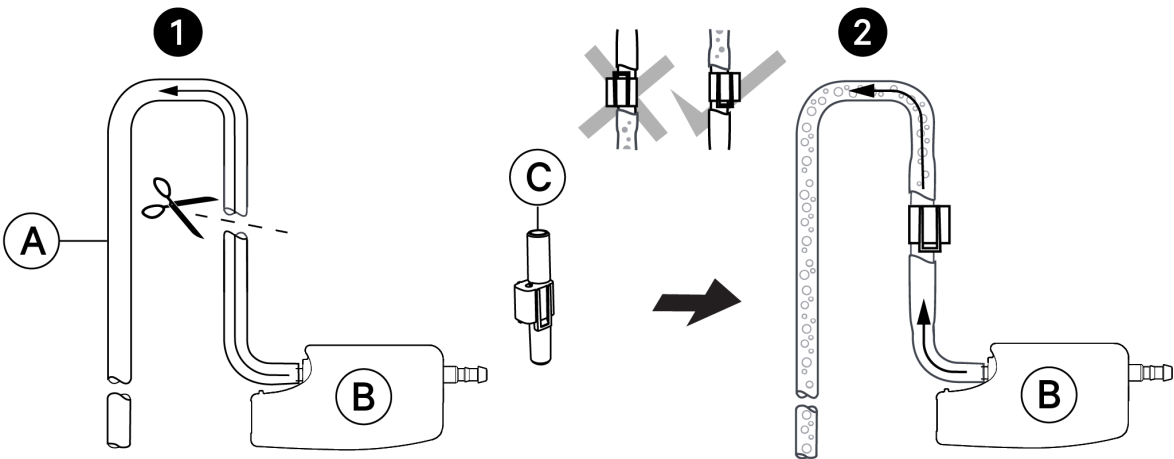
NOTE: A metal clamp is recommended.



9. Redirect the pump outlet / drain hose (B) towards the location where the drained water wants to be taken (hose internal dia.: 1/4" / 6mm). Don't forget to install the anti-siphon device in the same direction of the water flow.

10. Install the syphon by cutting the pump drain then installing the syphon device.

NOTE: Make sure the device is in the right position.



Item	Description	Item	Description
1	Cut the pump drain	A	Condensate drain pipe I.D. 6mm
2	Installing the syphon device	B	Pump
		C	Syphon

11. Put the cover back.

Vertiv™ CoolPhase Wall Condensate Pump Kit



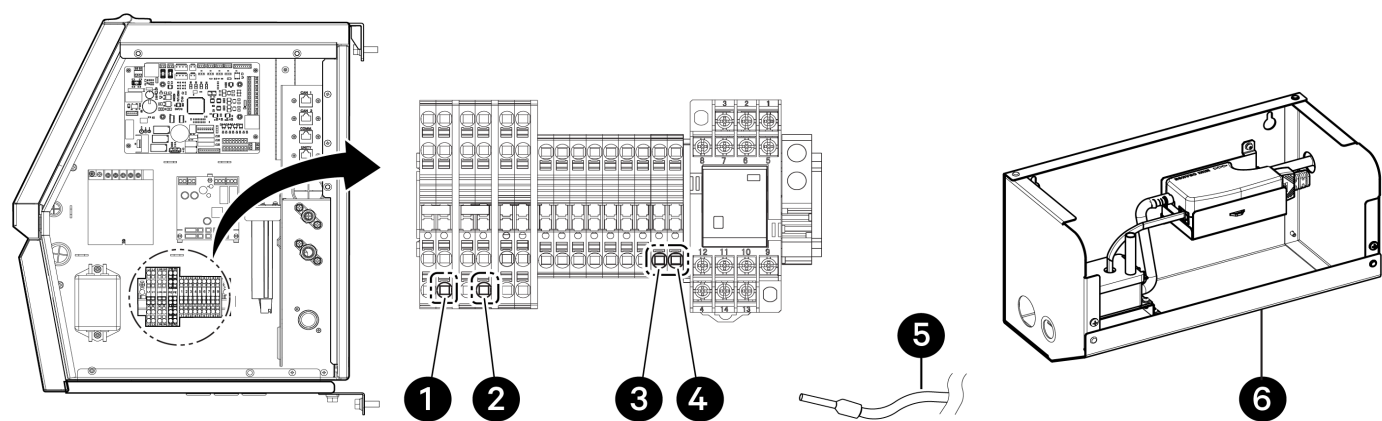
Quick Installation Guide For Part Number: WLMPMPKIT

To connect the power supply cables:

1. The electrical box is located in the right-side of the indoor unit. Remove the E-Box panel (evaporator right cover) by removing the five (5) M5x25 flat head screws.

2. Insert the power cord through the grommets and route it into the E-Box via the wire inlet hole at the bottom of the unit. Then, make the necessary electrical connections.
3. Route the pump power supply cables into the unit through the grommet holes located at the bottom. Then, connect the black cable to L1, the red cable to L2/N, the purple cable to terminal 8, and the grey cable to terminal 9 on the power supply terminal block.

4. Install the pump kit cover.



Item	Description	Item	Description
1	Power cable 1 (Black)	4	Alarm cable 2 (Grey)
2	Power cable 2 / Neutral (Red)	5	Wiring cable overview
3	Alarm cable (Purple)	6	Condensate Pump kit

To contact Vertiv Technical Support: visit www.Vertiv.com

© 2025 Vertiv Group Corp. All rights reserved. Vertiv™ and the Vertiv logo are trademarks or registered trademarks of Vertiv Group Corp. All other names and logos referred to are trade names, trademarks or registered trademarks of their respective owners. While every precaution has been taken to ensure accuracy and completeness here, Vertiv Group Corp. assumes no responsibility, and disclaims all liability, for damages resulting from use of this information or for any errors or omissions.

