

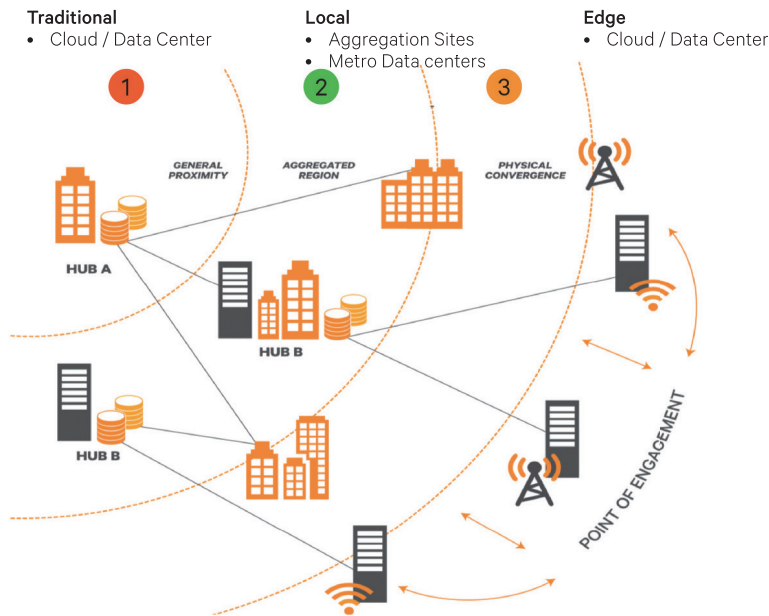


Vertiv™ SmartCabinet™

Intelligent, Integrated Infrastructure
for the Data center



A CHANGING DIGITAL WORLD

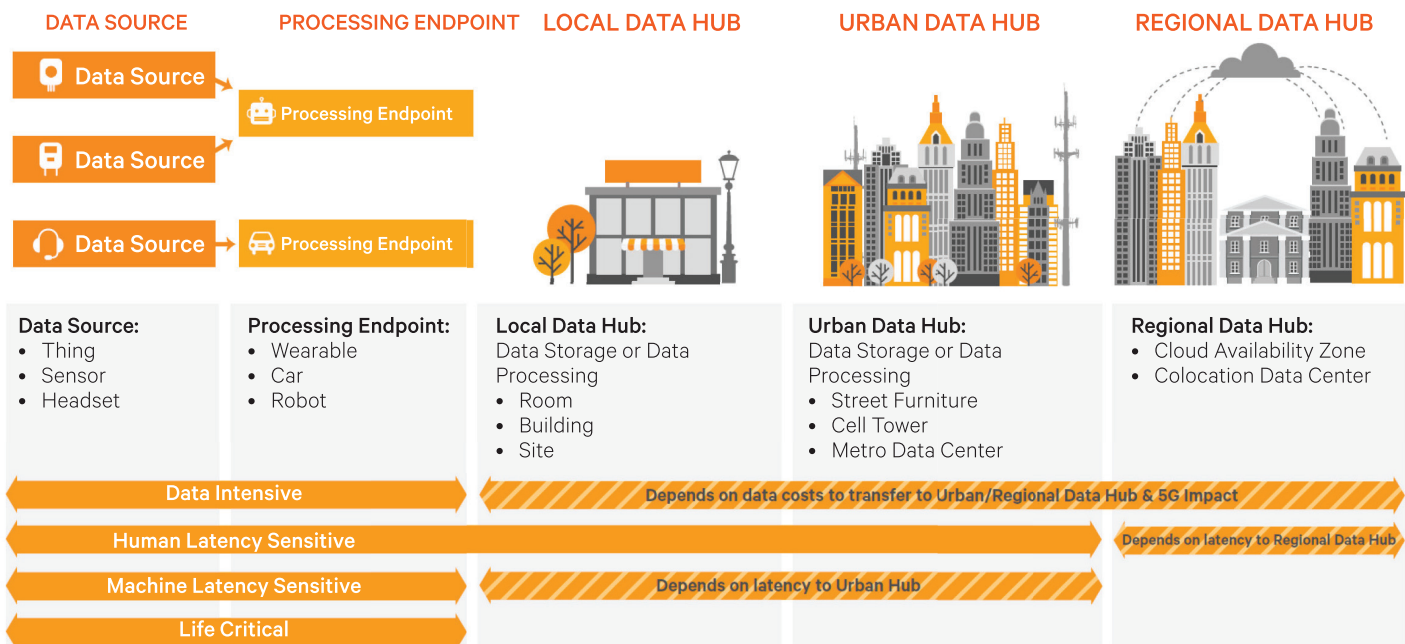


Traditionally, data was generated at the Core and consumed at the Edge.

This model is now changing, with the large and growing number of smart devices and sensors generating a massive amount of information at the Edge.

Just a fraction of the content created at the Edge will be sent to the Core. Most of it will be processed and filtered at Edge sites.

What will enable this major shift?



Vertiv researched and analyzed the technology drivers and requirements of Edge use-cases across a wide range of business segments and verticals. The use-cases were each assigned to one of four archetypes that best characterize its intent and challenges:

- Data Intensive
- Human Latency
- M2M Latency
- Life Critical

Optimize your existing or new IT environments.

No other solution offers the industry's leading power, precision cooling, and data center infrastructure management systems for such a wide array of applications and environments.

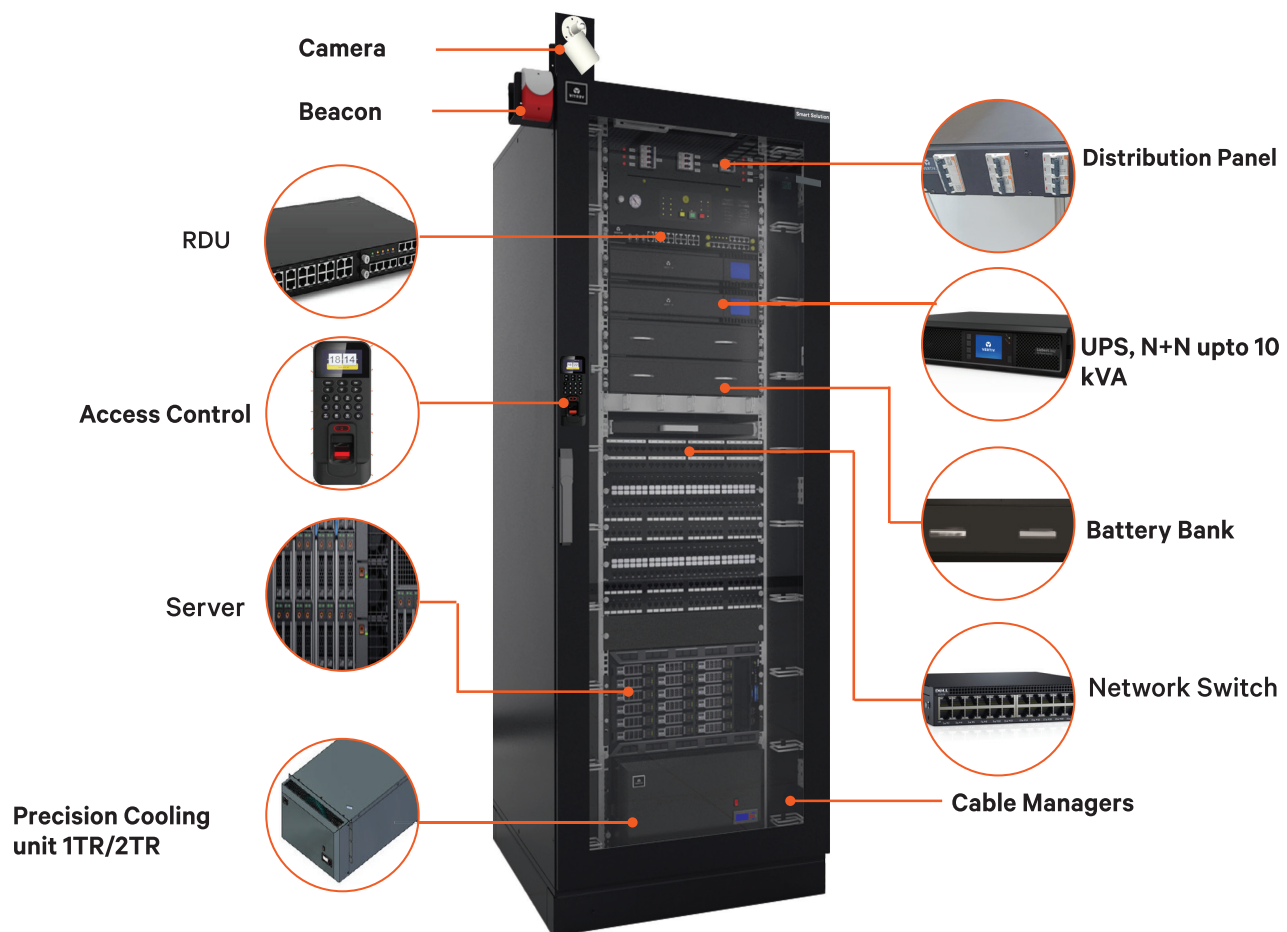
Vertiv™ SmartCabinet™ enables Enterprise Class IT Infrastructure through the provision of integrated enclosure, power, cooling, and service. Critically it also enables the most vital element - namely 360° visibility of all system components.

This enables review, real time monitoring as well as insight into system performance going ahead so Vertiv™ SmartCabinet™ customers can most effectively manage and plan their IT Infrastructure.

Continuous availability in turn rests on the power and cooling infrastructure that supports these systems and is comprised of the following:

- Power Quality
- Cooling
- Enclosure and Physical Infrastructure
- Monitoring and Management.

Capacity	: 3-20 kVA
Rack	: 1-4 Racks
Floor	: Primarily Non-raised
Certification	: CE Marking
Key Application	: Server Room and Small Datacenters



Technical Specification

Specifications	Vertiv™ SC-1-3-U3 2N	Vertiv™ SC-2-3 CW-RC-U3 2N	Vertiv™ SC-2-7-U6 2N	Vertiv™ SC-2-7 RC DS-U10 2N	Vertiv™ SC-3-14 RC3-U10 2N	Vertiv™ SC-4-21 RC4 DS-U20 2N
IT Capacity	3 kVA	3 kVA	6 kVA	7 kVA	10 kVA	20 kVA
No. of Racks	1	2	2	2	3	4
Cooling Capacity	3.5 kW	2 × 3.5 kW CW	7 kW FS	2 × 7 kW DS	3 × 7 kW FS	4 × 7 kW DS
Cooling Redundancy	No	Yes	No	Yes	Yes	Yes
UPS Capacity	2 × kVA	2 × 3 kVA	2 × 6 kVA	2 × 10 kVA	2 × 10 kVA	2 × 20 kVA
UPS Redundancy	Yes					
Backup Time	Min 5 mins to max 60 mins					
Monitoring	Yes					
Fire Suppression and Access control	Optional					
Usable U Space*	25	61	64	50	86	109
Display Panel	7 inch HMI Display					
Rack PDU Type	All types (Basic, Metered and Monitored)					
Accessories	KVM, LCD Console, Camera with local surveillance, LTS, and DCIM					
CE Certification	Yes					
Dimensions						
Width (mm)	800	1600	1600	1600	2400	3200
Height (mm)	2100 (42U) 2300 (47U)					
Depth (mm)	1100-1200					

Note: Specifications are subjected to change without prior notice.

Note*: U space available is subjected to change as per configuration.

Additional SmartCabinet™ Models being offered are SC-1-2, SC-1-2-U3 2N, SC-1-3, SC-1-3-U3 2N, SC-1-3-U6 2N, SC-1-3-U10 2N, SC-1-7, SC-1-7-U6 2N, SC-1-7-U10 2N, SC-1-7 DS, SC-1-7 DS-U6 2N, SC-1-7 DS-U10 2N, SC-1-3 CW, SC-1-3 CW-U3 2N, SC-1-3 CW-U6 2N, SC-2-3, SC-2-3-U3 2N, SC-2-3-U6 2N, SC-2-3-U10 2N, SC-2-3 RC, SC-2-3 RC-U3 2N, SC-2-3 RC-U6 2N, SC-2-3 RC-U10 2N, SC-2-7, SC-2-7 RC, SC-2-7-U6 2N, SC-2-7 RC-U6 2N, SC-2-7-U10 2N, SC-2-7 RC-U10 2N, SC-2-7 DS, SC-2-7 RC DS, SC-2-7 DS-U6 2N, SC-2-7 RC DS-U6 2N, SC-2-7 DS-U10 2N, SC-2-7 RC DS-U10 2N, SC-2-3 CW RC, SC-2-3 CW, SC-2-3 CW-U3 2N, SC-2-3 CW RC-U3 2N, SC-2-3 CW-U6 2N, SC-2-3 CW RC-U6 2N, SC-3-7 RC3, SC-3-7 RC3-U6 2N, SC-3-7 RC3-U10 2N, SC-3-7 RC3-U20 2N, SC-3-14 RC3, SC-3-14 RC3, SC-3-14 RC3-U6 2N, SC-3-14 RC3-U10 2N, SC-3-14 RC3-U20 2N, SC-3-14 RC3 DS, SC-3-14 RC3 DS-U6 2N, SC-3-14 RC3 DS-U10 2N, SC-3-14 RC3 DS U20 2N, SC-3-7 CW RC3, SC-3-7 CW RC3-U6 2N, SC-3-7 CW RC3-U10 2N, SC-3-7 CW RC3-U20 2N, SC-4-10 RC4, SC-4-10 RC4-U10 2N, SC-4-10 RC4-U20 2N, SC-4-21 RC4, SC-4-21 RC4-U10 2N, SC-4-21 RC4-U10 2N, SC-4-21 RC4-U20 2N, SC-4-21 RC4 DS, SC-4-21 RC4 DS-U10 2N, SC-4-21 RC4 DS-U20 2N, SC-4-10 CW RC4, SC-4-10 CW RC4 U10 2N, SC-4-10 CW RC4 U20 2N.

Local Expertise

Our network of local data center design experts have decades of experience building strong, infrastructures for IT environments of all sizes and types. These experts will work with you to identify and implement the exact solution for your needs. And they can thoroughly assess your IT environment to address your power, cooling and management challenges.

Industry-Leading Services

Our globally - renowned service and support organization is the largest in the industry. Vertiv Global Services can provide service capability for your entire facility infrastructure: from AC Power, DC power, Global Edge solutions, and Energy Storage solutions to Environmental Services, for all Vertiv brands and businesses.



Vertiv.com/en-in | E-mail : marketing.india@vertiv.com | Toll free : 1-800-2096070

Vertiv Energy Private Limited | Plot C-20, Rd No.19, Wagle Ind Estate, Thane (W), 400604. India

© 2023 Vertiv Co. All rights reserved. Vertiv, and the Vertiv logo trademarks or registered trademarks of Vertiv Co. All other names and logos referred to are trade names, trademarks or registered trademarks of their respective owners. While every precaution has been taken to ensure accuracy and completeness herein, Vertiv Co. assumes no responsibility, and disclaims all liability, for damages resulting from use of this information or for any errors or omissions. Specifications are subject to change without notice.