



Vertiv™ Liebert® GXE UPS

1000 - 3000 VA 230V

Essential and Affordable UPS
for High Performance
Power Protection



Essential and affordable Uninterruptible Power Supply (UPS) for high performance protection

The Vertiv™ Liebert® GXE UPS is an online double conversion solution which offers power protection in an affordable, efficient system with deployment and operation flexibility.

The high output power factor (0.9) of the Liebert GXE single-phase UPS enables continuous and reliable power to more connected devices, protecting them against many disturbances in the AC mains with the online double conversion technology and the input surge protection.

The high efficiency in both line and ECO modes of operation for this already affordable UPS also drives energy and operational costs savings.

Available in 1, 1.5, 2 and 3kVA power ratings in either a compact tower form factor, or in a rack/tower form factor with flexibility for mounting in either tower position or inside a rack cabinet together with the IT equipment critical for any application. Moreover, the capability to add external battery cabinets in the rack/tower models provides scalable runtime for those applications requiring even a longer period of backup in case of AC mains failures. It is combined with a powerful internal charger with a maximum of 6 Amps for a fast recharge.

In addition to the extended runtime, having multiple monitoring options make this compact UPS ideal for delivering best-in-class power protection to equipment at the edge of networks or in remote sites.

Vertiv™ Liebert® GXE Features

- High output power factor (0.9)
- High efficiency in online mode (up to 91%)
- Even higher efficiency (up to 96%) in ECO mode
- Compact tower only form factor or flexible rack/tower convertible design
- User-friendly LCD interface
- Fast recharge time (<4 hours to 90% for internal batteries)
- Extended runtime with up to 4 optional External Battery Cabinets (EBC)
- Hot-swappable user replaceable internal UPS batteries
- Remote management capability with optional Network Communications Card
- (8) IEC60320 C13 outlets (all models), plus (1) C19 (3kVA model)
- Automatic internal bypass
- Free UPS management software
- Vertiv™ Life™ Service to maximize UPS availability

What's in the box?

- Vertiv™ Liebert® GXE UPS
- Quick Installation Guide
- Safety Instructions
- Adjustable 4-post rack mounting kit (rack/tower models only)
- Rack mounting ears & hardware
- Input power cables (UK, AUS, Schuko. 1.8 m)
- Output power cables IEC C13-C14 (x2 in 2-3kVA models, and x1 in 1-1.5kVA models)
- USB cable type A-B (1.2 m)
- Stabilizing feet for tower configuration (rack/tower models only)
- Free [Vertiv™ Power Assist](#) software for local UPS status and shutdown, or [Vertiv™ Power Insight™](#) for remote network management



Vertiv™ Liebert® GXE 1000 VA rack/tower shown with an optional 2U external battery cabinet

Vertiv™ Liebert® GXE Features and Benefits



High output power factor (0.9)

More usable power enables more connected loads saving space and costs.



LCD display

It provides insight to UPS status for easy installation and operation.



Efficiency (up to 91%) in online mode

Higher efficiency means an optimized energy management and lower heat dissipation, thus providing energy savings and improved reliability.



Compact tower design

Tower form factor with a compact design for non-rack applications.



Remote monitoring

Manageability Achieve Industry-Leading Cybersecurity with Confidence In today's fast-evolving digital landscape, high-level security is no longer optional— it's a requirement. Our product offers the highest industry-standard security certifications, including UL2900 and in progress IEC62443-4-2, ensuring your systems meet the latest cybersecurity standards.



Hot-swappable user replaceable batteries

Easy replacement of the internal batteries without power interruption.



Multiple power sockets

x8 IEC C13 output sockets in all the ratings to protect more devices.



Flexible Rack / Tower models

Space-saving UPS provides rack space optimization and flexible installation.



Rack mounting kit included

4-post rack mounting kit included in rack/tower models for easy and immediate installation.



Fast recharge time

Powerful integrated charger, recharging internal batteries in less than 4 hours @90%. Up to 6 Amps maximum capacity with EBCs connected in R/T models.



External battery cabinets

Up to 4 external battery cabinets can be connected in rack/tower models for applications requiring extended runtime.

Vertiv™ Liebert® GXE Applications



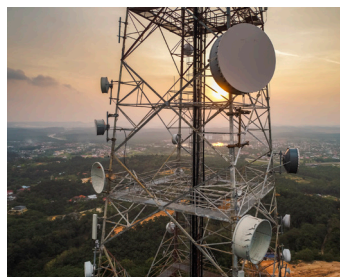
IT

- Servers
- Networking equipment
- Data storage



Finance

- Branch offices
- Closed-circuit televisions and data protection
- ATMs



Telecom

- 5G mobile stations
- Access and “last mile”
- Small control rooms



Industrial

- Manufacturing sites
- Control equipment and programmable logic controllers (PLCs)
- Data and networking equipment



Education

- Networking closets
- Networking equipment
- Office protection



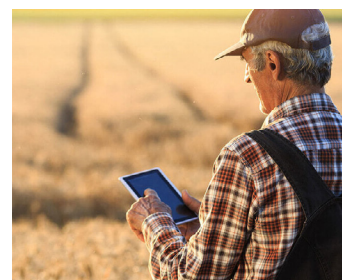
Government

- Distributed offices
- Closed-circuit television (CCTV) and data protection
- Small server and storage rooms



Retail

- Several point of sale systems
- Networking and wiring closets
- Security and voice over internet protocol (VoIP) telephony



Edge

- Distributed cloud services
- Content providers
- Sensors and data stations

To get the utmost performance, upgrade to Vertiv™ Liebert® GXT5



Liebert® GXT5 750VA - 3000VA extra features

Unity output power factor (1.0)	3 years standard warranty
Controllable output power sockets	Up to 10 external battery cabinets
Even higher efficiency in online mode (up to 94%)	Autodetection of external battery cabinets
Improved graphical LCD display	Improved battery charger
Lithium-ion battery models available	Frequency converter mode

Technical Specifications - Vertiv™ Liebert® GXE 1-3 kVA Tower

Model Number	GXE3-1000IMT	GXE3-1500IMT	GXE3-2000IMT	GXE3-3000IMT
Power Rating (VA/W)	1000VA / 900W	1500VA / 1350W	2000VA / 1800W	3000VA / 2700W
Form Factor	Tower	Tower	Tower	Tower
Dimensions, mm				
Unit (W x D x H)	160 x 315 x 245	160 x 420 x 245	160 x 420 x 245	200 x 425 x 345
Shipping (W x D x H)	235 x 395 x 325	235 x 560 x 325	235 x 560 x 325	320 x 560 x 460
Weight, kg				
Unit	11.8	16.4	19.4	27.7
Shipping	12.5	17.3	20.4	29.3
Input AC Parameters				
Voltage Range Without Battery Operation (230V default, derating applies)•	110 - 290	110 - 290	110 - 290	110 - 290
Voltage Range Without Battery Operation (230V default, 100% load)	180 - 290	180 - 290	180 - 290	180 - 290
Frequency Range (Hz, autosensing)	40 - 70	40 - 70	40 - 70	40 - 70
Input Power Connector	IEC60320 C14	IEC60320 C14	IEC60320 C20	IEC60320 C20
Surge Protection (J)	600	600	600	600
Output AC Parameters				
Output Voltage	220/230 (default) /240	220/230 (default) /240	220/230 (default) /240	220/230 (default) /240
Waveform	Pure Sine Wave	Pure Sine Wave	Pure Sine Wave	Pure Sine Wave
Output Overload (AC Mode)	105% - 110% @ 10 min 111% - 130% @ 30 sec 131 - 150% @ 2 sec > 150% @ immediate	105% - 110% @ 10 min 111% - 130% @ 30 sec 131 - 150% @ 2 sec > 150% @ immediate	105% - 110% @ 10 min 111% - 130% @ 30 sec 131 - 150% @ 2 sec > 150% @ immediate	105% - 110% @ 10 min 111% - 130% @ 30 sec 131 - 150% @ 2 sec > 150% @ immediate
Output Receptacles	8 x IEC60320 C13	8 x IEC60320 C13	8 x IEC60320 C13	8 x IEC60320 C13 1 x IEC60230 C19
Efficiency (online mode, max.)	89%	89%	89%	91%
Efficiency (ECO mode, max.)	95%	95%	96%	96%
Battery				
Type	Valve-regulated, non-spillable, lead-acid	Valve-regulated, non-spillable, lead-acid	Valve-regulated, non-spillable, lead-acid	Valve-regulated, non-spillable, lead-acid
Recharge Time (internal batteries, typical)	<4 hr @ 90%	<4 hr @ 90%	<4 hr @ 90%	<4 hr @ 90%
Backup Time (100% load, minutes)	3.1	3.2	3.2	3.3
Backup Time (50% load, minutes)	9	9	9	9.5
Compatible with External Battery Cabinets	No	No	No	No
Environmental				
Operating Temperature (°C)	0 to 40°C	0 to 40°C	0 to 40°C	0 to 40°C
Storage Temperature (°C, without battery inside)	-20°C to +50°C	-20°C to +50°C	-20°C to +50°C	-20°C to +50°C
Relative Humidity (operation, non-condensing)	5% to 95%	5% to 95%	5% to 95%	5% to 95%
Operating Altitude (m), without derating (**)	2000	2000	2000	2000
Audible Noise (line mode)	<53dBA	<53dBA	<53dBA	<53dBA
Agency				
Compliance	CE, CB Report, UKCA, Morocco, RCM	CE, CB Report, UKCA, Morocco, RCM	CE, CB Report, UKCA, Morocco, RCM	CE, CB Report, UKCA, Morocco, RCM
Safety	IEC/EN 62040-1	IEC/EN 62040-1	IEC/EN 62040-1	IEC/EN 62040-1
Surge Immunity	EN 61000-4-5	EN 61000-4-5	EN 61000-4-5	EN 61000-4-5
Transportation	ISTA 2A	ISTA 2A	ISTA 2A	ISTA 2A
Environmental	RoHS, REACH, WEEE	RoHS, REACH, WEEE	RoHS, REACH, WEEE	RoHS, REACH, WEEE
Communications and Management				
Slot for optional cards	Yes	Yes	Yes	Yes
Communication port	USB	USB	USB	USB
Emergency Power Off (EPO)	Yes	Yes	Yes	Yes
Warranty				
Warranty (electronics and batteries)	2 years	2 years	2 years	2 years

(*) Note. Specific conditions or power derating applies

(**) Note: up to 3000 m with power derating

Vertiv™ Liebert® GXE UPS | 1000 - 3000 VA 230V

Technical Specifications - Vertiv™ Liebert® GXE 1-3 kVA Rack/Tower

Model Number	GXE3-1000IRT2UXL	GXE3-1500IRT2UXL	GXE3-2000IRT2UXL	GXE3-3000IRT2UXL
Power Rating (VA/W)	1000VA / 900W	1500VA / 1350W	2000VA / 1800W	3000VA / 2700W
Form Factor	Rack / Tower (2U)	Rack / Tower (2U)	Rack / Tower (2U)	Rack / Tower (2U)
Dimensions, mm				
Unit (W x D x H)	438 x 430 x 86	438 x 430 x 86	438 x 430 x 86	438 x 630 x 86
Shipping (W x D x H)	560 x 600 x 235	560 x 600 x 235	560 x 600 x 235	790 x 600 x 235
Weight, kg				
Unit	16.0	19.6	22.7	31.5
Shipping	17.6	21.6	24.8	34.2
Input AC Parameters				
Voltage Range Without Battery Operation (230V default, derating applies)*	110 - 290	110 - 290	110 - 290	110 - 290
Voltage Range Without Battery Operation (230V default, 100% load)	180 - 290	180 - 290	180 - 290	180 - 290
Frequency Range (Hz, autosensing)	40 - 70	40 - 70	40 - 70	40 - 70
Input Power Connector	IEC60320 C14	IEC60320 C14	IEC60320 C20	IEC60320 C20
Surge Protection (J)	600	600	600	600
Output AC Parameters				
Output Voltage	220/230 (default) /240	220/230 (default) /240	220/230 (default) /240	220/230 (default) /240
Waveform	Pure Sine Wave	Pure Sine Wave	Pure Sine Wave	Pure Sine Wave
Output Overload (AC Mode)	105% - 110% @ 10 min 111% - 130% @ 30 sec 131 - 150% @ 2 sec > 150% @ immediate	105% - 110% @ 10 min 111% - 130% @ 30 sec 131 - 150% @ 2 sec > 150% @ immediate	105% - 110% @ 10 min 111% - 130% @ 30 sec 131 - 150% @ 2 sec > 150% @ immediate	105% - 110% @ 10 min 111% - 130% @ 30 sec 131 - 150% @ 2 sec > 150% @ immediate
Output Receptacles	8 x IEC60320 C13	8 x IEC60320 C13	8 x IEC60320 C13	8 x IEC60320 C13 1 x IEC60230 C19
Efficiency (online mode, max.)	89%	89%	89%	91%
Efficiency (ECO mode, max.)	95%	95%	96%	96%
Battery				
Type	Valve-regulated, non-spillable, lead-acid	Valve-regulated, non-spillable, lead-acid	Valve-regulated, non-spillable, lead-acid	Valve-regulated, non-spillable, lead-acid
Recharge Time (Internal batteries, typical)	<4 hr @ 90%	<4 hr @ 90%	<4 hr @ 90%	<4 hr @ 90%
Backup Time (100% load, minutes)	3.1	3.2	3.2	3.3
Backup Time (50% load, minutes)	9	9	9	9.5
Compatible External Battery Cabinet	GXE3-EBC24VRT2U	GXE3-EBC36VRT2U	GXE3-EBC48VRT2U	GXE3-EBC72VRT2U
Environmental				
Operating Temperature (°C)	0 to 40°C	0 to 40°C	0 to 40°C	0 to 40°C
Storage Temperature (°C, without battery inside)	-20°C to +50°C	-20°C to +50°C	-20°C to +50°C	-20°C to +50°C
Relative Humidity (operation, non-condensing)	5% to 95%	5% to 95%	5% to 95%	5% to 95%
Operating Altitude (m), without derating (**)	2000	2000	2000	2000
Audible Noise (line mode)	<53dBA	<53dBA	<53dBA	<53dBA
Agency				
Compliance	CE, CB Report, UKCA, Morocco, RCM	CE, CB Report, UKCA, Morocco, RCM	CE, CB Report, UKCA, Morocco, RCM	CE, CB Report, UKCA, Morocco, RCM
Safety	IEC/EN 62040-1	IEC/EN 62040-1	IEC/EN 62040-1	IEC/EN 62040-1
Surge Immunity	EN 61000-4-5	EN 61000-4-5	EN 61000-4-5	EN 61000-4-5
Transportation	ISTA 2A	ISTA 2A	ISTA 2A	ISTA 2A
Environmental	RoHS, REACH, WEEE	RoHS, REACH, WEEE	RoHS, REACH, WEEE	RoHS, REACH, WEEE
Communications and Management				
Slot for optional cards	Yes	Yes	Yes	Yes
Communication port	USB	USB	USB	USB
Emergency Power Off (EPO)	Yes	Yes	Yes	Yes
Warranty				
Warranty (electronics and batteries)	2 years	2 years	2 years	2 years

(*) Note. Specific conditions or power derating applies. (**) Note: up to 3000 m with power derating.

External Battery Cabinets

Model Number	GXE3-EBC24VRT2U	GXE3-EBC36VRT2U	GXE3-EBC48VRT2U	GXE3-EBC72VRT2U
Dimensions, mm				
Unit (W x D x H)	438 x 410 x 86	438 x 410 x 86	438 x 510 x 86	438 x 630 x 86
Shipping (W x D x H)	560 x 600 x 235	560 x 600 x 235	650 x 600 x 235	600 x 790 x 235
Weight, kg				
Unit	16.2	21.2	28.6	40.8
Shipping	21.1	26.1	34.1	47.2
Agency				
Compliance	CE, EAC, UKCA, Morocco	CE, EAC, UKCA, Morocco	CE, EAC, UKCA, Morocco	CE, EAC, UKCA, Morocco

Network Communication Cards and environmental sensors

Optional IntelliSlot™ cards are compatible with all Vertiv™ Liebert® PS15 UPS systems

Network Communications	RDU120	Manageability Achieve Industry-Leading Cybersecurity with Confidence In today's fast-evolving digital landscape, high-level security is no longer optional— it's a requirement. Our product offers the highest industry-standard security certifications, including UL2900 and in progress IEC62443-4-2, ensuring your systems meet the latest cybersecurity standards.
	IS-UNITY-SNMP	10/100 Mbit Ethernet SNMP, Device Web Page, with MIB and configuration cable
	IS-UNITY-DP	Same as IS-UNITY-SNMP plus SN series environmental sensor support
	IS-RELAY	Intellislot Interface Kit for Relay Contacts
UNITY Card Environmental Sensors	SN-Z01	Integrated cable with single temperature sensor
	SN-Z02	Integrated cable with three temperature sensors
	SN-Z03	Integrated cable with three temperature and one humidity sensors
	SN-T	Modular with single temperature sensor
	SN-TH	Modular with single temperature and single humidity sensor
	SN-2D	Modular with two door contact inputs
	SN-3C	Modular with three dry contact inputs
	SN-L20	Modular leak zone sensor with 20 foot cable (Liebert RDU-S only)
RDU120 Card Environmental Sensors	A2D-10	Analog to digital converter provides the ability to connect a dry contact, 0-10V, or 4-20mA sensor to a Plug-n-Play sensor port. Includes a 10ft / 3m cable.
	A2D-50	Analog to digital converter provides the ability to connect a dry contact, 0-10V, or 4-20mA sensor to a Plug-n-Play sensor port. Includes a 10ft / 3m cable.
	GT3HD	Temperature, humidity, and dew point sensor with dual inputs for included 3ft / .9m and 6ft / 1.8m temperature sensors for monitoring top, middle, and bottom of a rack or cabinet. Includes a supplementary input for daisy-chaining additional sensors. Includes 10ft / 3m cable.
	GT3HD-50	Temperature, humidity, and dew point sensor with dual inputs for included 3ft / .9m and 6ft / 1.8m temperature sensors for monitoring top, middle, and bottom of a rack or cabinet. Includes a supplementary input for daisy-chaining additional sensors. Includes 50ft / 15.2m cable.
	GTHD	Temperature, humidity, and dew point sensor. Includes a supplementary input for daisy-chaining additional sensors. Includes 10ft / 3m cable.
	GTHD-50	Temperature, humidity, and dew point sensor. Includes a supplementary input for daisy-chaining additional sensors. Includes 50ft / 15.2m cable.
	SRT-12	Temperature sensor used to monitor temperature in critical environments. Includes a 12ft / 3.6m cable.
	SRT-20	Temperature sensor used to monitor temperature in critical environments. Includes a 20ft / 6.1m cable.
	SRT-50	Temperature sensor used to monitor temperature in critical environments. Includes a 50ft / 15.2m cable.
	SRT-100	Temperature sensor used to monitor temperature in critical environments. Includes a 100ft / 30.4m cable.
	RTAFHD3-12	Temperature, airflow, humidity, and dew point sensor. Includes 12ft / 3.6m cable.
	RTAFHD3-20	Temperature, airflow, humidity, and dew point sensor. Includes 20ft / 6.1m cable.
	RTAFHD3-50	Temperature, airflow, humidity, and dew point sensor. Includes 50ft / 15.2m cable.
	RTAFHD3-100	Temperature, airflow, humidity, and dew point sensor. Includes 100ft / 30.4m cable.
	FS-15	0-5VDC conductivity based flood sensor used to detect the presence of water. Includes a 15ft / 4.5m cable.
	FS-100	0-5VDC conductivity based flood sensor used to detect the presence of water. Includes a 100ft / 30.4m cable.
	RDPS	Magnetic normally-closed dry-contact sensor used to monitor remote door position. Includes 30ft / 9.1m cable.
	RDPS-50	Magnetic normally-closed dry-contact sensor used to monitor remote door position. Includes 50ft / 15.2m cable.
	RDPS-100	Magnetic normally-closed dry-contact sensor used to monitor remote door position. Includes 100ft / 30.4m cable.

External Battery Cabinets

UPS Model	External Battery Cabinet
GXE3-1000IRT2UXL	GXE3-EBC24VRT2U
GXE3-1500IRT2UXL	GXE3-EBC36VRT2U
GXE3-2000IRT2UXL	GXE3-EBC48VRT2U
GXE3-3000IRT2UXL	GXE3-EBC72VRT2U



Internal Replacement Battery Kits

UPS Model	Replacement Battery Kit
GXE3-1000IRT2UXL	GXTRT-24BATKIT
GXE3-1500IRT2UXL	GXTRT-36BATKIT
GXE3-2000IRT2UXL	GXTRT-48BATKIT
GXE3-3000IRT2UXL	GXTRT-72BATKIT
GXE3-1000IMT	GXTRT-24BATKIT
GXE3-1500IMT	GXTRT-36BATKIT
GXE3-2000IMT	GXTRT-48BATKIT
GXE3-3000IMT	VUPS-72VBATKIT9AMT



Vertiv™ Liebert® MicroPOD – Maintenance Bypass and Output Distribution

The Vertiv™ Liebert® MicroPOD (Power Output Distribution) is a maintenance bypass option for UPS products, 3kVA and below. It allows removal of the UPS without powering down the connected equipment.

UPS Model	MicroPOD Model	Input socket	Output receptacles
GXE3-1000IRT2UXL	MP2-210K	IEC60320 C14	8 x IEC60320 C13
GXE3-1500IRT2UXL		IEC60320 C14	
GXE3-2000IRT2UXL	MP2-220K	IEC60320 C20	6 x IEC60320 C13 & 1 x IEC60320 C19
GXE3-3000IRT2UXL	MP2-220L	IEC60320 C20	



UPS Rear View

Vertiv™ Liebert® GXE tower models

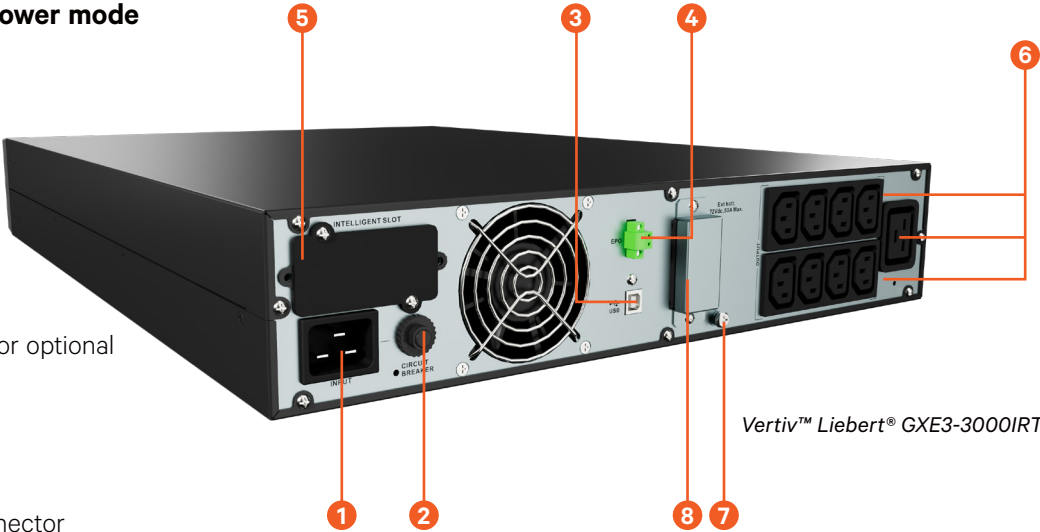


- 1. AC input
- 2. Input circuit breaker
- 3. USB communication port
- 4. EPO port
- 5. Vertiv™ Liebert® IntelliSlot™ for optional network management card
- 6. Output receptacles
- 7. Grounding screw

Vertiv™ Liebert® GXE3-3000IMT

Vertiv™ Liebert® GXE rack/tower mode

- 1. AC input
- 2. Input circuit breaker
- 3. USB communication port
- 4. EPO port
- 5. Vertiv™ Liebert® IntelliSlot™ for optional network management card
- 6. Output receptacles
- 7. Grounding screw
- 8. External battery cabinet connector



Vertiv™ Liebert® GXE3-3000IRT2UXL

UPS Rear View

Runtime tool available at:

<https://www.vertiv.com/en-emea/support/tools-applications/vertiv-ups-interactive-runtime-tools/>

Vertiv™ Liebert® Liebert GXE 1-3kVA Tower



1000 VA				1500 VA			2000 VA			3000 VA		
% load	Runtime	Load (W)	Load (VA)	Runtime	Load (W)	Load (VA)	Runtime	Load (W)	Load (VA)	Runtime	Load (W)	Load (VA)
100%	3.1	900	1000	3.2	1350	1500	3.2	1800	2000	3.3	2700	3000
70%	6.5	630	700	6.2	945	1050	6.5	1260	1400	6.2	1890	2100
60%	7.8	540	600	7.6	810	900	7.5	1080	1200	7.4	1620	1800
50%	9.0	450	500	9.0	675	750	9.0	900	1000	9.5	1350	1500
20%	22.0	180	200	24.0	270	300	26.0	360	400	29.0	540	600



Vertiv™ Liebert® GXE 1-3kVA Rack / Tower

1000 VA Internal batteries				UPS + 1 EBC		UPS + 2 EBCs		UPS + 3 EBCs		UPS + 4 EBCs	
% load	Runtime	Load (W)	Load (VA)	Runtime	Runtime	Runtime	Runtime	Runtime	Runtime	Runtime	Runtime
100%	3.1	900	1000	18	35	54	72	72	99	115	137
80%	4.2	720	800	26	48	74	99	99	139	166	199
70%	6.5	630	700	30	57	85	115	115	166	201	242
60%	7.8	540	600	35	65	93	137	137	199	242	294
50%	9.0	450	500	38	70	103	139	139	199	242	294
40%	12.5	360	400	46	96	138	196	196	271	325	396
20%	22.0	180	200	92	176	238	349	349	494	594	728

UPS Part number: GXE3-1000IRT2UXL
See notes below about runtime. Runtimes in minutes.

EBC Part number: GXE3-EBC24VRT2U

1500 VA Internal batteries				UPS + 1 EBC		UPS + 2 EBCs		UPS + 3 EBCs		UPS + 4 EBCs	
% load	Runtime	Load (W)	Load (VA)	Runtime	Runtime	Runtime	Runtime	Runtime	Runtime	Runtime	Runtime
100%	3.2	1350	1500	18	35	55	74	74	99	116	138
80%	4.5	1080	1200	26	46	73	99	99	139	166	199
70%	6.2	945	1050	30	56	85	116	116	166	201	242
60%	7.6	810	900	36	66	94	138	138	199	242	294
50%	9.0	675	750	39	72	106	143	143	199	242	294
40%	13.0	540	600	47	98	140	199	199	271	325	396
20%	24.0	270	300	97	179	242	351	351	494	594	728

UPS Part number: GXE3-1500IRT2UXL
See notes below about runtime. Runtimes in minutes.

EBC Part number: GXE3-EBC36VRT2U

2000 VA Internal batteries				UPS + 1 EBC		UPS + 2 EBCs		UPS + 3 EBCs		UPS + 4 EBCs	
% load	Runtime	Load (W)	Load (VA)	Runtime	Runtime	Runtime	Runtime	Runtime	Runtime	Runtime	Runtime
100%	3.2	1800	2000	19	37	55	75	75	99	116	139
80%	4.6	1440	1600	26	49	73	100	100	139	166	199
70%	6.5	1260	1400	30	56	85	116	116	166	201	242
60%	7.5	1080	1200	37	67	86	139	139	199	242	294
50%	9.0	900	1000	39	73	111	151	151	199	242	294
40%	13.8	720	800	46	99	141	201	201	271	325	396
20%	26.0	360	400	99	182	246	359	359	494	594	728

UPS Part number: GXE3-2000IRT2UXL
See notes below about runtime. Runtimes in minutes.

EBC Part number: GXE3-EBC48VRT2U

3000 VA Internal batteries				UPS + 1 EBC		UPS + 2 EBCs		UPS + 3 EBCs		UPS + 4 EBCs	
% load	Runtime	Load (W)	Load (VA)	Runtime	Runtime	Runtime	Runtime	Runtime	Runtime	Runtime	Runtime
100%	3.3	2700	3000	19	36	56	76	76	99	116	139
80%	4.5	2160	2400	25	47	71	98	98	139	166	199
70%	6.2	1890	2100	29	55	84	113	113	166	201	242
60%	7.4	1620	1800	36	66	87	136	136	199	242	294
50%	9.5	1350	1500	42	78	115	155	155	199	242	294
40%	13.7	1080	1200	49	101	147	206	206	271	325	396
20%	29.0	540	600	102	188	252	363	363	494	594	728

UPS Part number: GXE3-3000IRT2UXL
See notes below about runtime. Runtimes in minutes.

EBC Part number: GXE3-EBC72VRT2U

Note: Approximate runtimes at 25°C for batteries in new conditions, fully recharged and pure resistive load. Actual runtimes can vary due to battery age, temperature or configuration. Liebert GXE Tower models do not allow connection of External Battery Cabinets.

Comprehensive Service Support for Critical Systems

Power Emergency Package

Providing more than the standard warranty and extension program, this five-year protection program is valid for Liebert® GXE single-phase UPS units at 3 kVA. Purchased within six months from the equipment purchase date, the program includes:

- **Advance replacement or repair of faulty unit** within 8 working hours or incident ticket acknowledgement up to 2 working days after claim.
- **100% coverage of electronic parts and failed batteries**, excluding battery misuse and/or reduced autonomy.
- **Free shipping** from the following European countries: Albania, Austria, Belgium, Bosnia & Herzegovina, Croatia, Czech Republic, France, Germany, Greece, Ireland, Italy, Kosovo, Luxembourg, Macedonia, Malta, Poland, Portugal, Romania, Serbia, Slovakia, Slovenia, Spain, Sweden, Switzerland, The Netherlands, Turkey, and United Kingdom.
- **24x7 access** to professional helpline.
- **Preventive Monitoring and diagnostic Service** via Vertiv™ LIFE™ Services, included in the Premier version of the package (available only for 3kVA version).



Installation and Start-up Services

Installation and Start-up Services provide on-site technical support for installation and start-up of your UPS or battery cabinet.

Get your Liebert® GXE up and running fast, thanks to the expertise of a Vertiv certified engineer.

Liebert® GXE Model	Power Emergency	Power Emergency Premier	Warranty Extension +1 Year	Warranty Extension +3 Years	Start-up 8x5	Start-up 24x7
GXE3-1000IMT, GXE3-1000IRT2UXL	RUPS-PE5-002		RUPS-WE1-002	RUPS-WE3-002	--	--
GXE3-1500IMT, GXE3-1500IRT2UXL	RUPS-PE5-003		RUPS-WE1-003	RUPS-WE3-003	--	--
GXE3-2000IMT, GXE3-2000IRT2UXL	RUPS-PE5-003		RUPS-WE1-003	RUPS-WE3-003	--	--
GXE3-3000IMT, GXE3-3000IRT2UXL	RUPS-PE5-004	RUPS-PEP5-004	RUPS-WE1-004	RUPS-WE3-004	PS-RUPS-ST85-005	PS-RUPS-ST247-005
GXE3-EBC24VRT2U, GXE3-EBC36VRT2U	--	--	RUPS-WE1-004	RUPS-WE3-004	--	--
GXE3-EBC72VRT2U, GXE3-EBC48VRT2U	--	--	RUPS-WE1-005	RUPS-WE3-005	--	--

Recommended Services

Standard

Channel Services

Advanced


Channel Services

Elite

Channel Services

Build Your Total Infrastructure Solution with Vertiv

Discover expert designed IT infrastructure solutions with proven success in diverse environments and countless applications.



Vertiv™ VR Rack

Self-contained 42U server rack designed to simplify equipment installation and provides an additional 6cm of useable depth.

Vertiv™ Geist™ rPDU

Reliable power distribution with outlet level remote monitoring and management providing the highest level of power visibility and control.

Cable and Air Flow Management

Included accessories enable proper cable management and airflow to keep your equipment cool.

Vertiv™ VRC

Keep critical IT equipment cool with a dedicated high-efficiency rack-mount cooling system with scalable capacity.

Software and IT Management

Monitor the entire system either locally or remotely to enable you are alerted of out-of-range conditions that could result in costly downtime.

Vertiv™ Liebert® GXE

Helps to protect mission critical equipment in the event of power loss or extreme power fluctuations.

