

Vertiv™ Duct Kit for CoolPhase Condensing Units of 3.5, 7 and 11 kW



For Part Numbers: CUDUCTKIT-07 and CUDUCTKIT-11.

Quick Installation Guide

Safety Instructions: Read these instructions before and during installation process. Keep this document after installation.

The duct kit must be used when the unit is required to be adapted to a duct system; it is crucial to install this kit before mounting the unit to the ceiling for proper component access and installation.

The following tools/equipment are required for the kit installation to the Unit:

- Screwdriver, for screw tightening and securing them to the condenser.
- Safety Gloves, for personal protection during installation.

Kit Components

Item	Description	Qty.
1	Fan Bracket	1
2	Duct Mounting Plate, Long Plate	2
3	Duct Mounting Plate, Short Plate	2
4	M5 Screws	8

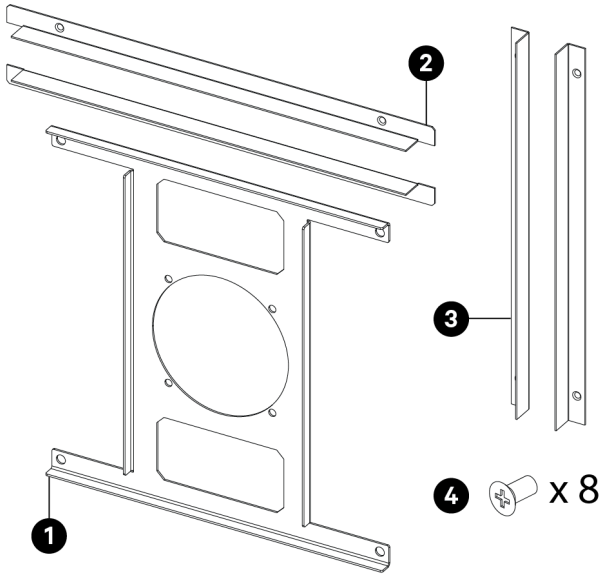
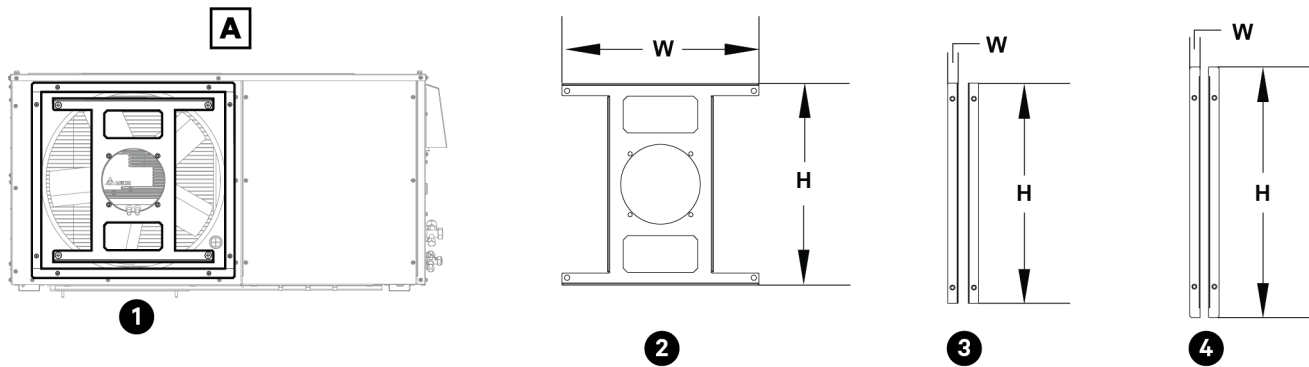


Figure 1. Duct Kit components.

Specifications and Compatibility

SKU	Description	Duct Kit Dimensions (Width x Height) in (mm)			Compatible Condensing Unit Model	External Static Pressure inH ₂ O (pa)
		Fan Bracket	Duct Mounting Plate			
			Long Plate	Short Plate		
CUDUCTKIT-07	Duct Kit for 3.5 and 7 kW Units	14.8 x 15.1 (376.4 x 384.4)	0.78 x 18.81 (20 x 478)	0.78 x 16.53 (20 x 420)	CUD030 CUL030	0.200932 (50)
					CUD070 CUL070	0.120559 (30)
CUDUCTKIT-11	Duct Kit for 11 kW Units	16.6 x 16.9 (423 x 431)	0.78 x 22.67 (20 x 576)	0.78 x 19.4 (20 x 493)	CUD111 CUL111 CUD115 CUL115	0.120559 (30)

Figure 2. Duct Kit dimensions and location.



Item	Description	Item	Description	Item	Description
A	Unit Front view	2	Fan Bracket	4	Duct Mounting Plate, Long Plate
1	Duct Kit location	3	Duct Mounting Plate, Short Plate		

Vertiv™ Duct Kit for CoolPhase Condensing Unit of 3.5, 7 and 11 kW



For Part Numbers: CUDUCTKIT-07 and CUDUCTKIT-11.

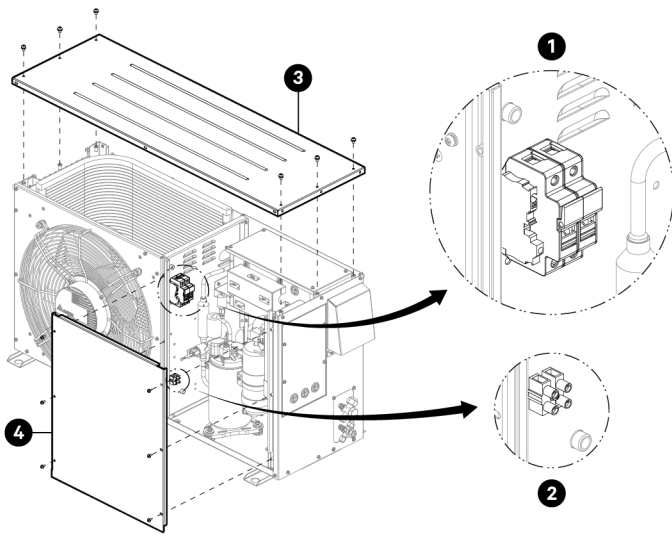
Quick Installation Guide

Installation Procedure

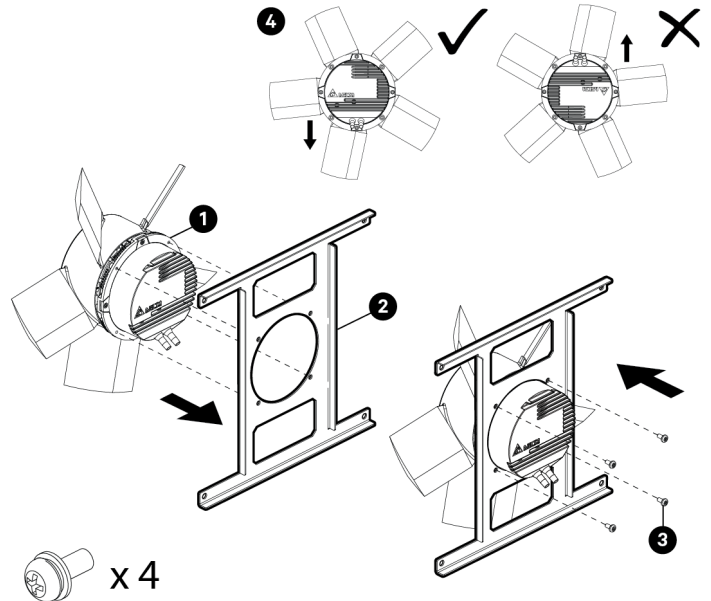
1. To install the Duct Kit, the fan must be removed. Before removing it, disconnect the fan power and communication cables by unplugging them from the terminals (1, 2) shown below. The top panel (3) and service panel (4) must also be removed to access them.

3. Using the M4 screws (3), attach the Fan Bracket (2) to the fan motor (1).

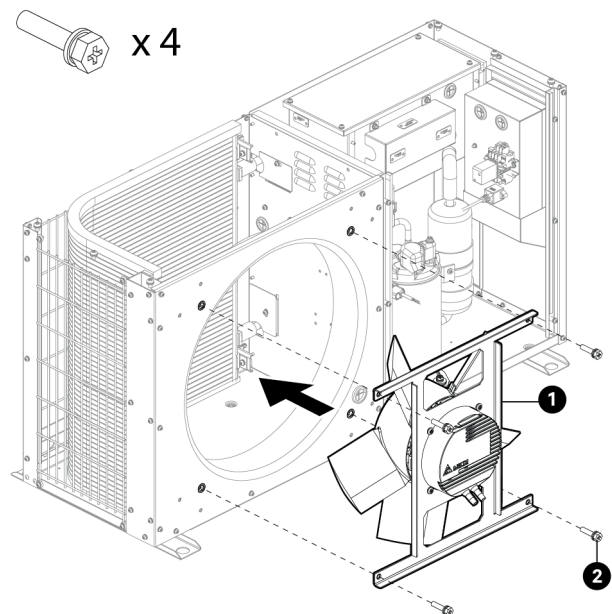
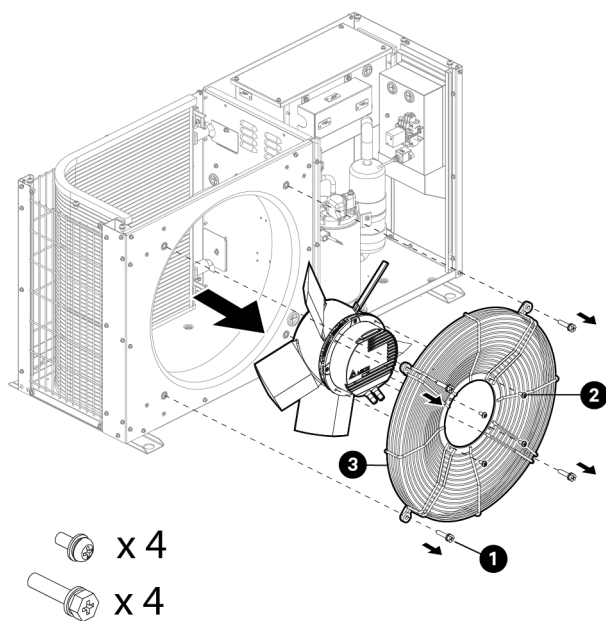
NOTE: Ensure that the fan motor direction is as shown below (4) to let the wires pass through the bottom part of the Fan Bracket.



2. Untighten the four M8 screws (1) with a screwdriver to remove the fan, then, step aside the fan guard (3) that protects the blades untightening the four M4 screws (2) on the center. Keep all screws for the Duct Kit installation.



4. Attach the assembly (1) to the unit using the M8 screws (2). Use the fan guard holes left over from removing the fan.



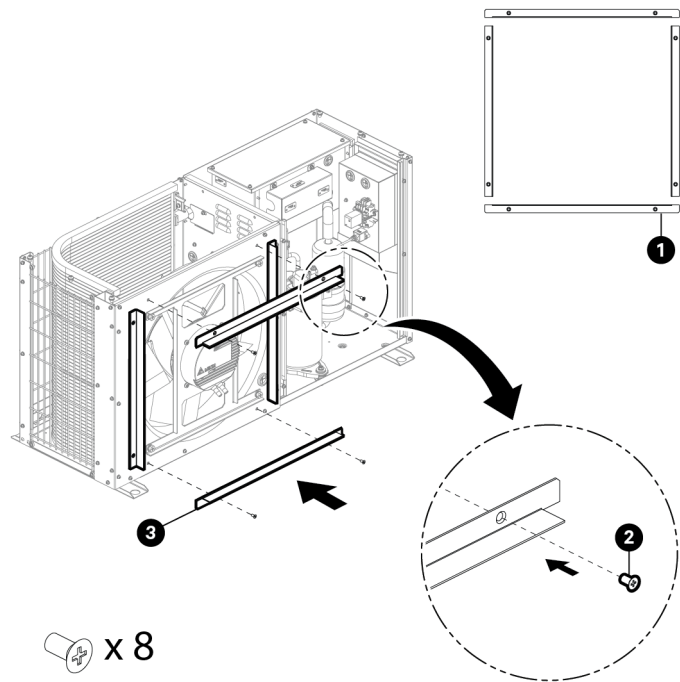
Vertiv™ Duct Kit for CoolPhase Condensing Unit of 3.5, 7 and 11 kW



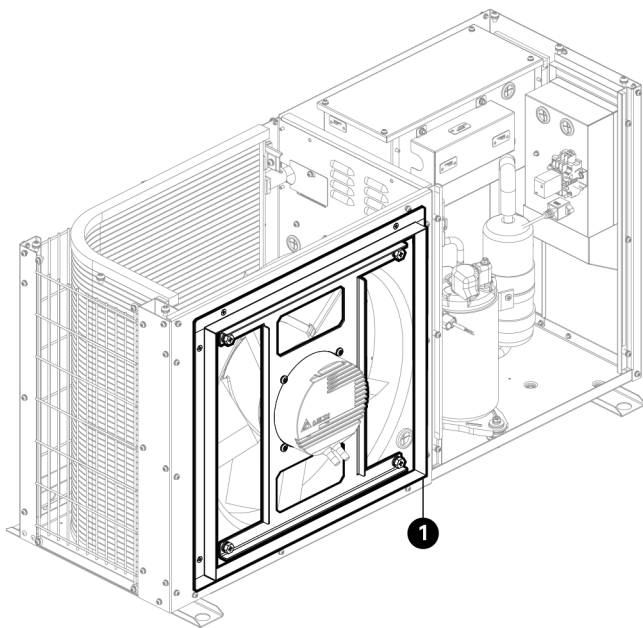
For Part Numbers: CUDUCTKIT-07 and CUDUCTKIT-11.

Quick Installation Guide

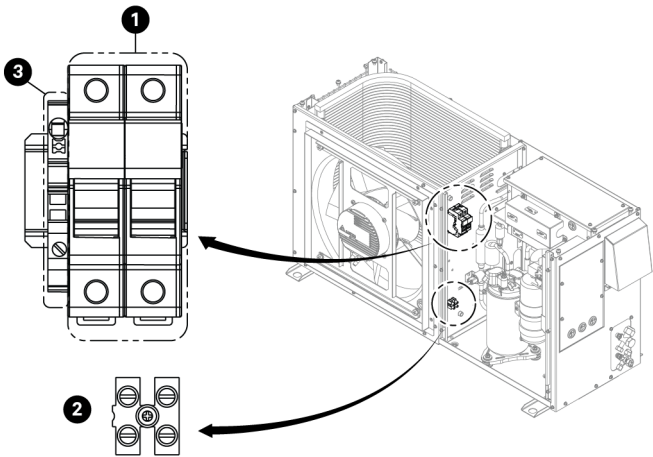
5. Once the fan is secured, install the components of the Mounting Plate (1). Use the 8 M4 screws (2) shown below and screw the four plate pieces (3) to their corresponding position.



6. After attaching and securing both kit pieces (1), reconnect the fan power and communication cables following the procedure in step 1, then proceed with the Unit installation process as indicated in the User Manual.

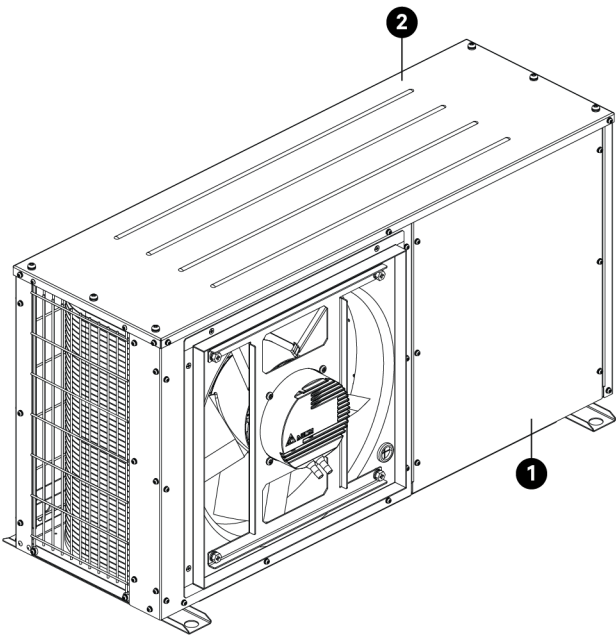


NOTE: For terminal block 1: the brown line connects to Fuse 1, the blue line connects to Fuse 2, the grey and yellow line connect to PE; for terminal block 2, the blue and white line connect to the left inlet of terminal block 2, the black line connects to the right inlet of terminal block 2.



Item	Description
1	Terminal Block 1
2	Terminal Block 2
3	PE

7. Return the service panel (1) and the top panel (2) to their original positions.



Vertiv™ Duct Kit for CoolPhase Condensing Unit of 3.5, 7 and 11 kW

For Part Numbers: CUDUCTKIT-07 and CUDUCTKIT-11.



Quick Installation Guide

Considerations

Installation and Ductwork

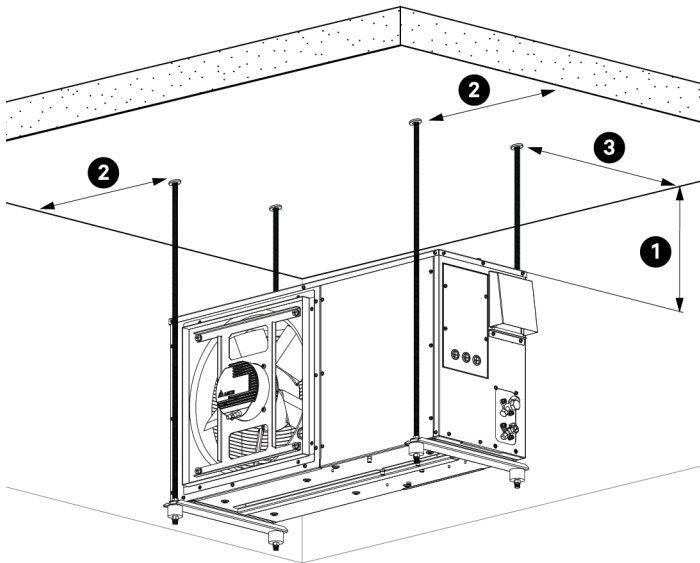
To lift the unit to its final installation location, use the lifting brackets contained in the condensation unit's package. For further indications, refer to the Handling Instructions.

Ensure the roof structure can support the weight of the unit and ductwork. Maintain clearance from roof edges and other equipment. Strictly follow local requirements and guidelines to ensure the duct system prior attaching the Condensing Unit to it.

Clearance requirements

The following guidelines are needed to ensure optimal airflow, performance, and maintenance to the unit while having the Duct Kit installed:

- 1- Top: 1.81 in (300 mm) clearance.
- 2- Sides: 23.62 in (600 mm) clearance.
- 3- Back: 1.81 in (300 mm) clearance.



NOTE: Consider external static pressure before performing any installation procedure. To see the corresponding values for each Condensing Unit Model, refer to “Specifications and Compatibility” table in this document.

To contact Vertiv Technical Support: visit www.Vertiv.com

© 2025 Vertiv Group Corp. All rights reserved. Vertiv™ and the Vertiv logo are trademarks or registered trademarks of Vertiv Group Corp. All other names and logos referred to are trade names, trademarks or registered trademarks of their respective owners. While every precaution has been taken to ensure accuracy and completeness here, Vertiv Group Corp. assumes no responsibility, and disclaims all liability, for damages resulting from use of this information or for any errors or omissions.

