



Product brochure

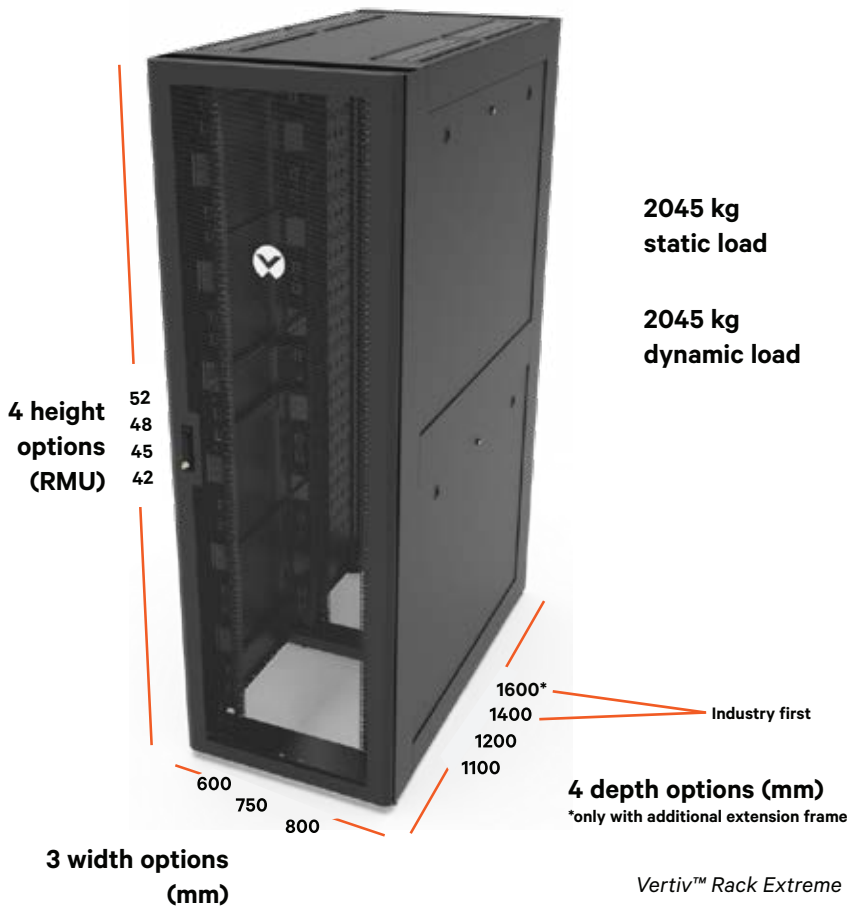
# Vertiv™ Rack Extreme

Next generation platform for higher weight capacity and high-density deployments



## Highlights

The Vertiv™ Rack Extreme offers industry-leading weight capacity to support taller and deeper rack mount equipment, along with the airflow, cable management, and power requirements of high-density environments.



### Fast deployment

Choose from multiple standard sizes. Integrate with accessories. The cabinet ships complete.

### Flexible configuration

Cabinets include features to manage power, cables, and airflow. Optional accessories available to meet high-density requirements.

### Easy installation and reconfiguration

Hundreds of mounting points throughout the cabinet support installation, repositioning, and accessory changes.\*

### Superior strength

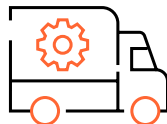
A fully-welded frame and 2,5 mm mounting rails support up to 2045 kg of static and dynamic weight capacity.

\*The quantity of mounting points depends on cabinet size during configuration.



### Enhanced structural capacity

Support both static and dynamic weight capacities to accommodate heavier, taller, and deeper rack-mount equipment.



### Reliable transport and deployment

Innovative shipping solutions, including shock pallets and multi-use ramps, support safe global transport and on-site deployment of rack-and-stack cabinets.

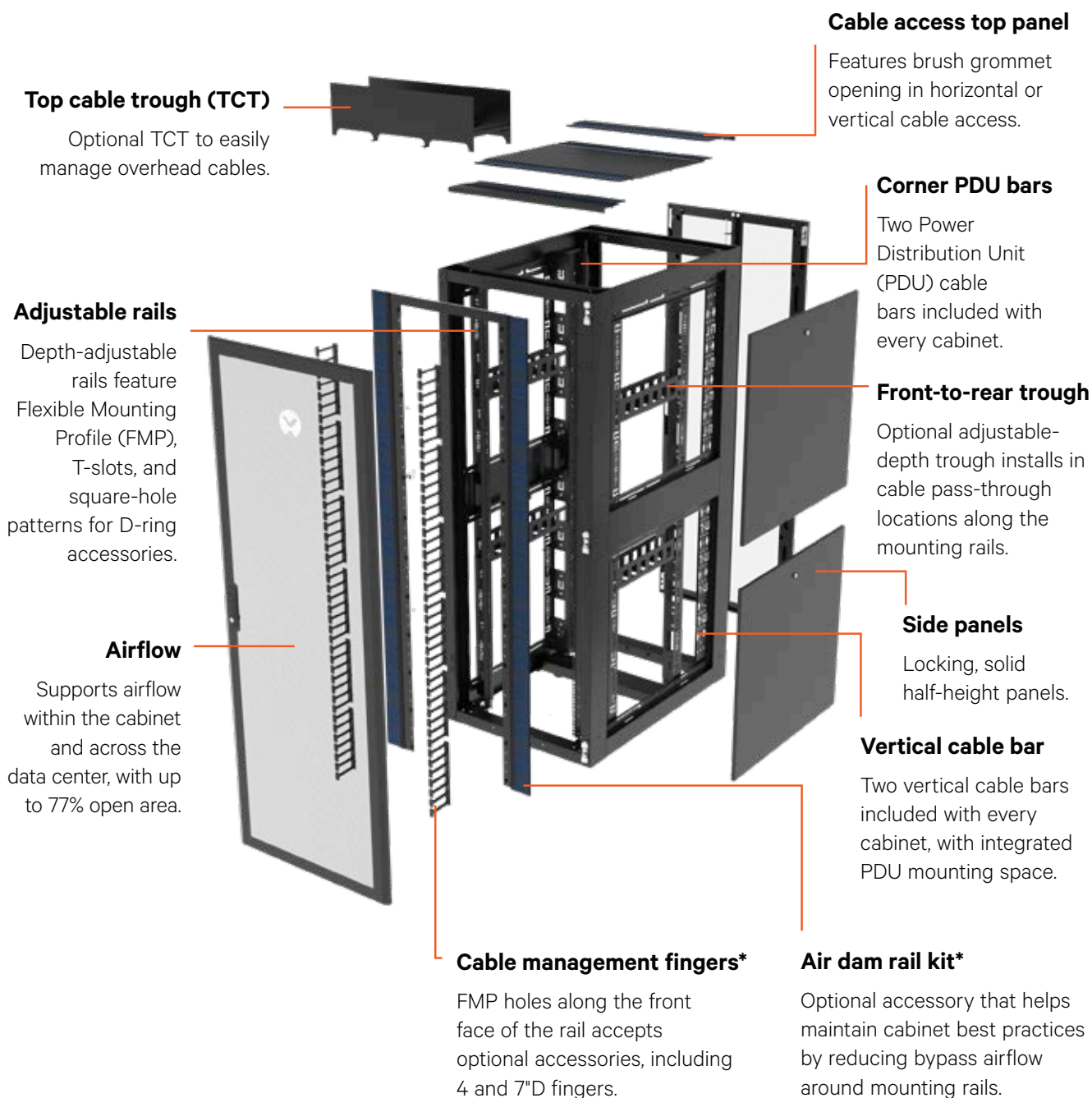


### Efficient airflow and cabling

Integrated features and optional accessories support airflow and organized cable management in high-density environments.



# Configurations



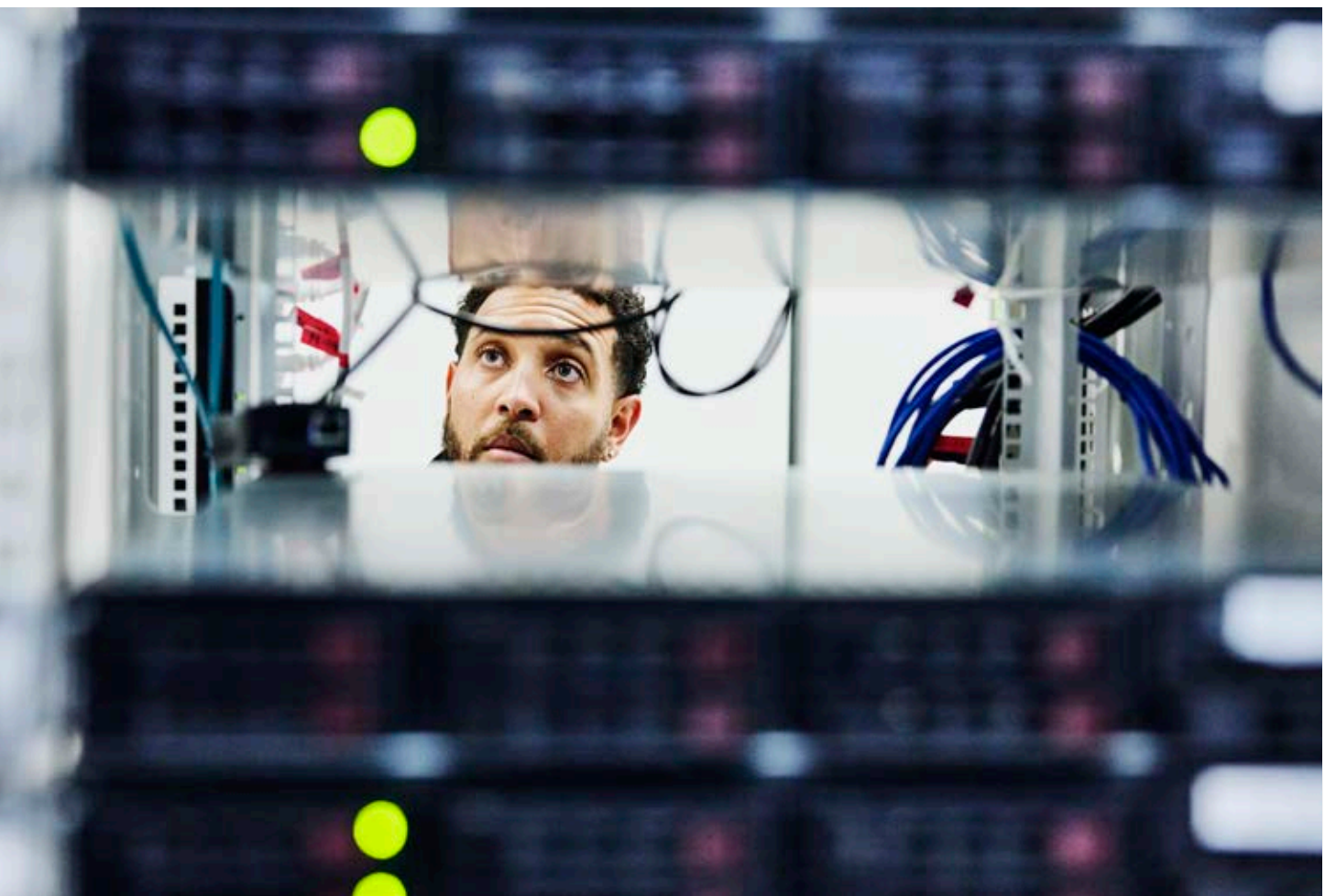
\*600mmW cabinet includes FMP on rear rails only. Cable management fingers and the air dam rail kit are not compatible with front rails.

## Specifications

Height (RMU)	Width (mm)	Depth (mm)	Color	Doors	Shipping	Example
GLxxUEX-	xx	xxx	x-	xx-	xx	Configured Vertiv™ Rack Extreme
52	60	110	B (Black)	MM (Mesh front/rear)	PL (Standard Pallet)	45UEX-80120B-MS-PL 45U x 800mmW x 1200mmD, black, mesh front and split mesh rear door, standard pallet
48	75	120	W (White)	MS (Mesh front/split mesh rear)	SP (Shock Pallet)	
45	80	140			SC (Shock Crate) <sup>1</sup>	
42		160*				

\*only with additional extension frame

- Frame with levelers and casters installed
  - 2 Corner PDU Bars
  - 2 vertical cable organizers with PDU mounting space
  - Hex mesh doors (as configured) with locking swing handle
  - Four solid, half-height side panels with quarter-turn locks
  - Brush grommet top panel
  - 3/8" sq. (M6) mounting rails
  - Hardware kit with 50 cage nuts and screws
  - Baying kit
  - 2 sets of anchor brackets
- <sup>1</sup> Shock Crate is not a compatible shipping option for 52U cabinets





## Accessories for Vertiv™ Extreme Rack

### Swing handle options

The locking swing handle provides a secure and versatile access solution for rack and enclosure environments. Designed for data center, telecommunications, and industrial applications, this handle enhances physical security by enabling compatibility with external hasp locking devices.

By incorporating hasp compatibility, the handle allows users to apply additional locking mechanisms such as padlocks, supporting site-specific security requirements and access control policies. This flexibility makes it ideal for installations where enhanced or customizable security is required.

Part number	Description
CH-03	Locking Swing Handle Accepts Hasp Lock
CH-04	Swing Handle Accepts Hasp Lock
CH-06	Locking Swing Handle with 4-Digit Combination, NOTE: Cam is not included with the CH-06 handle; If replacing a handle, reuse the cam from the existing handle
VRA7003	Vertiv™ Rack RFID and Pin Pad Door Lock Handle



CH-06, Locking Swing Handle with 4-Digit Combination



Vertiv™ Rack RFID and Pin Pad Door Lock Handle

## 19 in horizontal cable organizer with D-Rings, 1 & 2 RMU

The 19-inch horizontal cable organizer provides a compact and efficient solution for managing and routing cables within rack and enclosure environments. Designed for data center, telecommunications, and enterprise deployments, this organizer supports structured cable routing while improving accessibility and reducing strain on connections.

Part number	Description
CM-04	19in horizontal cable organizer, five 89mm x 127mm (3.5in x 5in) 1/4 turn inDin Rings, metal panel with plastic rings, 2 RMU
CM-05	19in horizontal cable organizer, five 38mm x 89mm (1.5in x 3.5in) 1/4 turn in Din Rings, metal panel with plastic rings, 1 RMU



CM-04, Horizontal cable organizer with D-Rings

## Single cinch strap with grommet, 19 mm × 152 mm (3/4 × 6 in)

The single cinch strap provides a simple and effective solution for securing and organizing cables within rack and enclosure environments. Designed for data center, telecommunications, and enterprise applications, this strap supports structured cable management while reducing clutter and improving accessibility.

Part number	Description
CM-06	19mmW x 152mmL (3/4inW x 6inL), single cinch strap with grommet, black



## 19 in horizontal waterfall cable organizer, 1 RMU

The 19-inch horizontal waterfall cable organizer provides a structured solution for routing cables while maintaining proper bend radius within rack and enclosure environments. Designed for data center, telecommunications, and enterprise deployments, this organizer supports clean cable transitions and reduces strain on connections.

Part number	Description
CM-07	19in horizontal waterfall cable organizer, metal, 1 RMU

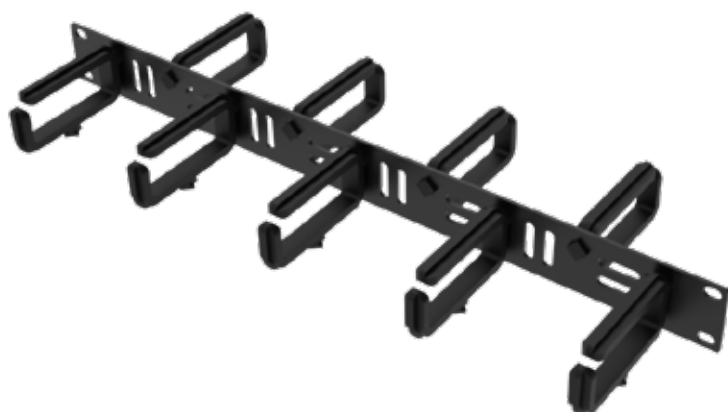


CM-07, 19 in horizontal waterfall cable organizer, 1 RMU

## Double-sided 19 in horizontal cable organizer with D-Rings, 1 RMU

The double-sided 19-inch horizontal cable organizer provides an efficient and high-capacity solution for routing and managing cables within rack and enclosure environments. Designed for data center, telecommunications, and enterprise deployments, this organizer supports structured cable routing on both the front and rear of the panel, maximizing cable management capability within a compact footprint

Part number	Description
CM-09	Double-sided, 19in horizontal cable organizer with nine 1/4 turn inDin rings, inDin rings: 38mm x 89mm (1.5in x 3.5in), metal, 1 RMU



CM-09, double-sided 19 in horizontal cable organizer with D-Rings, 1 RMU

## Single-Sided 19 in horizontal cable organizer with fingers and cover, 1 RMU

The single-sided 19-inch horizontal cable organizer with fingers and cover provides a structured and protected solution for routing and managing cables within rack and enclosure environments. Designed for data center, telecommunications, and enterprise deployments, this organizer supports clean cable pathways while improving accessibility and reducing strain on connections.

Part number	Description
CM-16	Single-sided, 19in horizontal cable organizer with fingers and cover, plastic, 1 RMU
CM-17	Single-sided, 19in horizontal cable organizer with fingers and covers, plastic, 2 RMU

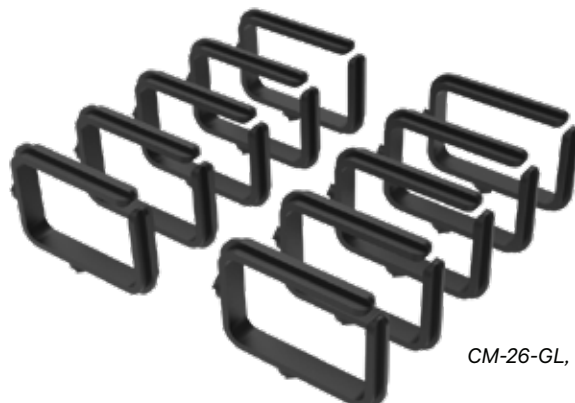


*CM-17, single-sided 19 in horizontal cable organizer with fingers and cover, 1 RMU*

## 1/4-Turn D-Rings, plastic, 89 mm × 127 mm (3.5 × 5 in), set of 10

The 1/4-turn D-rings provide a flexible and efficient solution for routing and organizing cables within rack and enclosure environments. Designed for data center, telecommunications, and enterprise applications, these D-rings support structured cable management while reducing strain on connections and improving overall organization.

Part number	Description
CM-26-GL	1/4 Turn inDin Rings, 89mm x 127mm (3.5in x 5in), plastic, set of 10



*CM-26-GL, 1/4-Turn D-Rings*



### Single-sided 19 in horizontal cable organizer with 102 mm (4 in) fingers and cover, 1 & 2 RMU

The single-sided 19-inch horizontal cable organizer with 102 mm (4 in) fingers and cover provides an advanced solution for high-capacity cable routing and protection within rack and enclosure environments. Designed for data center, telecommunications, and enterprise deployments, this organizer supports structured cable pathways while maintaining clean and efficient rack layouts.

Part number	Description
CM-27	Single-sided, 19in horizontal cable organizer with 102mmD (4inD) fingers and cover, 1 RMU, metal panel and cover; thermoplastic fingers
CM-28	Single-sided, 19in horizontal cable organizer with 102mmD (4inD) fingers and cover, 2 RMU, metal panel and cover; thermoplastic fingers



CM-27, Single-sided 19 in horizontal cable organizer

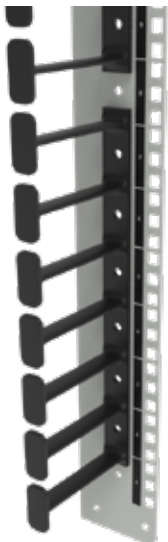


CM-28, Single-sided 19 in horizontal cable organizer

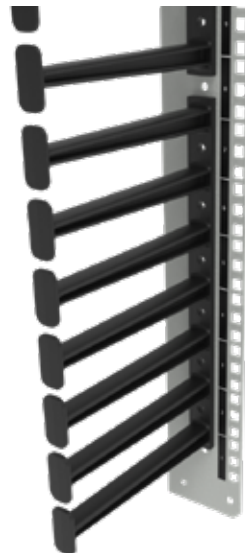
## Cable management fingers, 102 mm (4 in) and 178 mm (7 in) RMU, single section

The cable management fingers provide a vertical solution for organizing and routing cables within rack and enclosure environments. Designed for data center, telecommunications, and enterprise deployments, this single-section finger assembly supports structured cable pathways while maintaining proper bend radius and reducing strain on connections.

Part number	Description
CM-47	Cable management fingers, 102mm (4in) x 7 RMU, single section, color: black, installs along the FMP of mounting rails
CM-77	Cable management fingers, 178mm (7in) x 7 RMU, single section, color: black, installs along the FMP of mounting rails
ESC-K4	Cable management fingers, 102mm (4in) x 7 RMU, set of 4 sections, color: black, installs along the FMP of mounting rails
ESC-K4-7	Cable management fingers, 178mm (7in) x 7 RMU, set of 4 sections, color: black, installs along the FMP of mounting rails
ESC-K6	Cable management fingers, 102mm (4in) x 7 RMU, set of 6 sections, color: black, installs along the FMP of mounting rails
ESC-K6-7	Cable management fingers, 178mm (7in) x 7 RMU, set of 6 sections, color: black, installs along the FMP of mounting rails
ESC-K8	Cable management fingers, 102mm (4in) x 7 RMU, set of 8 sections, color: black, installs along the FMP of mounting rails
ESC-K8-7	Cable management fingers, 178mm (7in) x 7 RMU, set of 8 sections, color: black, installs along the FMP of mounting rails
ESC-K12	Cable management fingers, 102mm (4in) x 7 RMU, set of 12 sections, color: black, installs along the FMP of mounting rails
ESC-K12-7	Cable management fingers, 178mm (7in) x 7 RMU, set of 12 sections, color: black, installs along the FMP of mounting rails



CM-47, cable management fingers, 102mm (4in) x 7 RMU, single section



CM-77, Cable Management Fingers, 178mm (7in) x 7 RMU, Single section

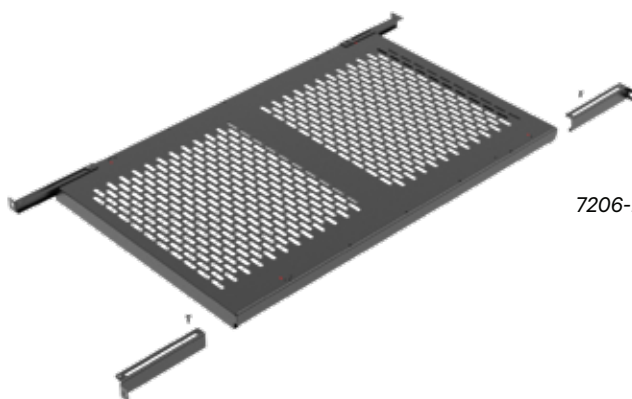


## Stationary shelf for 19 in rack mounting, 1 RMU

The stationary shelf for 19-inch rack mounting provides a reliable platform for supporting non-rackmount equipment within rack and enclosure environments. Designed for modern data center, enterprise, and edge deployments, this shelf enables secure placement of equipment that cannot be directly mounted to standard rack rails.

By providing a stable and fixed mounting surface, the shelf supports a wide range of devices including network appliances, small servers, peripherals, and support equipment. This flexibility allows infrastructure teams to integrate diverse equipment types while maintaining an organized and efficient rack layout.

Part number	Description
7206-FR-A28HD	Stationary shelf for 19in mounting, 445mmW x 711mmD (17.5inW x 28inD), 767mm (30.18in) Max. Tab placement, 136 kg (300 lb.) weight capacity, 1 RMU
7206-FR-A32HD	Stationary shelf for 19in mounting, 445mmW x 813mmD (17.5inW x 32inD), 914mm (36in) Max. Tab placement, 136 kg (300 lb.) weight capacity, 1 RMU
7206-FR-ADHD	Stationary shelf for 19in mounting, 445mmW x 692mmD (17.5inW x 27.25inD), 819mm (32.25in) Max. Tab placement, 68 kg (150 lb.) weight capacity, 1 RMU

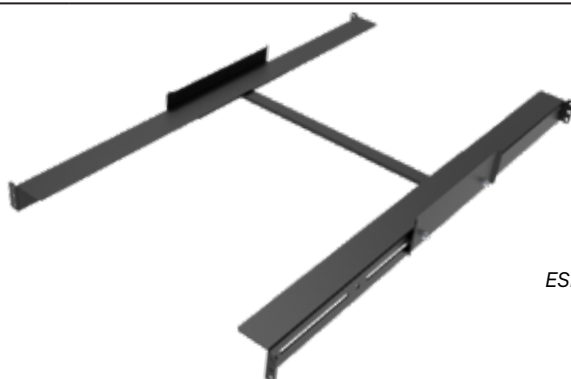


7206-FR-A28HD, Stationary shelf for 19in mounting

## Equipment support frame for 19 in rack mounting, 1 RMU

The equipment support frame for 19-inch rack mounting provides a flexible and high-strength solution for supporting heavy or deep equipment within rack and enclosure environments. Designed for data center, telecommunications, and enterprise deployments, this frame enhances equipment stability while accommodating a wide range of device sizes.

Part number	Description
ESF21-32	Equipment support frame for 19in mounting, variable depth 533-813mm (21-32in), 136 kg (300 lb.) Weight capacity, 1 RMU



ESF21-32, Equipment support frame for 19in mounting

## Filler panels

The filler panel for 19-inch rack mounting provides a simple and effective solution for closing unused rack space while supporting improved airflow management and enclosure efficiency. Designed for modern data center and edge deployments, this panel helps maintain proper front-to-rear airflow by preventing air recirculation through open rack units.

By blocking unused rack space, the filler panel reduces hot air bypass and helps enable that conditioned air is directed through active equipment as intended. This contributes to improved cooling performance, more consistent thermal conditions, and increased overall efficiency within the rack enclosure.

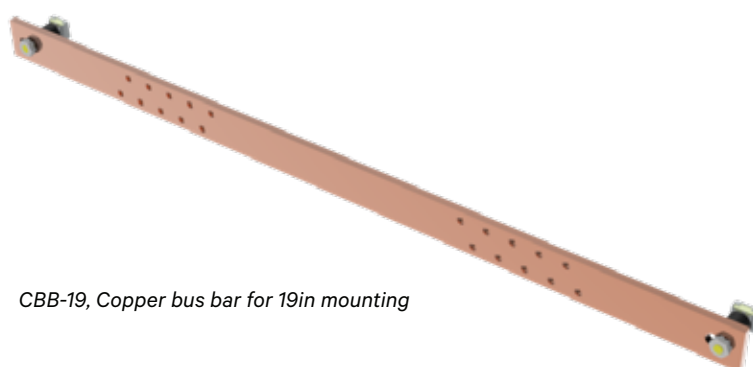
Part number	Description
GLHL10031CP	Filler panel for 19in mounting, 1 RMU, black panels, pack of 10
GLHL10033CP	Filler panel for 19in mounting, 2 RMU, black panels, pack of 5
GLHL10114CP	Filler panel for 19in mounting, 1 RMU, white panels, pack of 10
GLHL10115CP	Filler panel for 19in mounting, 2 RMU, white panels, pack of 5
1400-FP19	Filler panel for 19in mounting, 8 RMU, 356mmH (14.0inH)
1400-FPTL19	Filler panel for 19in mounting, 8 RMU, 356mmH (14.0inH), use with M6 sq. (3/8in) rails only
175-FP19	Filler panel for 19in mounting, 1 RMU, 44mmH (1.75inH)
175FP19BG	Filler panel for 19in mounting, 1 RMU with brush to allow cable pass-thru
175-FPTL19	Filler panel for 19in mounting (tool-less), 1 RMU, 44mmH (1.75inH), Use with M6 sq. (3/8in) rails only
350-FP19	Filler panel for 19in mounting, 2 RMU, 89mmH (3.5inH)
350FP19BG	Filler panel for 19in mounting, 2 RMU with brush to allow cable pass-thru
350-FPTL19	Filler panel for 19in mounting (tool-less), 2 RMU, 89mmH (3.5inH), use with M6 sq. (3/8in) rails only
525-FP19	Filler panel for 19in mounting, 3 RMU, 133mmH (5.25inH)
525-FPTL19	Filler panel for 19in mounting (tool-less), 3 RMU, 133mmH (5.25inH), use with M6 sq. (3/8in) rails only
700-FP19	Filler panel for 19in mounting, 4 RMU, 178mmH (7.0inH)
700-FPTL19	Filler panel for 19in mounting (tool-less), 4 RMU, 178mmH (7.0inH), use with M6 sq. (3/8in) rails only
875-FPTL19	Filler panel for 19in mounting, 5 RMU, 222mmH (8.75inH), use with M6 sq. (3/8in) rails only
875-FP19	Filler panel for 19in mounting, 5 RMU, 222mmH (8.75inH)
875-FPTL19	Filler panel for 19in mounting , 5 RMU, 222mmH (8.75inH), use with M6 sq. (3/8in) rails only



## Copper bus bar for 19 in rack mounting

The copper bus bar for 19-inch rack mounting provides a reliable and flexible solution for grounding and bonding within rack and enclosure environments. Designed for modern data center, telecommunications, and enterprise deployments, this bus bar supports proper electrical grounding to enhance equipment safety, reduce electrical noise, and improve overall system performance.

Part number	Description
CBB-19	Copper bus bar for 19in mounting, ten #10-32 mounting holes, Includes hardware pack for various mounting options
CBB-19THBL	Copper bus bar for 19in mounting, twenty #12-24 mounting holes, accepts two-hole barrel lugs, includes hardware pack for various mounting options
CBB-72	Copper bus bar, 1676mm (66in), isolated, use with 1829, 2007 and 2134mm (72, 79 and 84in) cabinets, mounts along the FMP of cabinets and racks
CBB-78	Copper bus bar, 1930mm (76in), isolated, use with 2311 and 2489mm (91 and 98in) cabinets, mounts along the FMP of cabinets and racks



*CBB-19, Copper bus bar for 19in mounting*

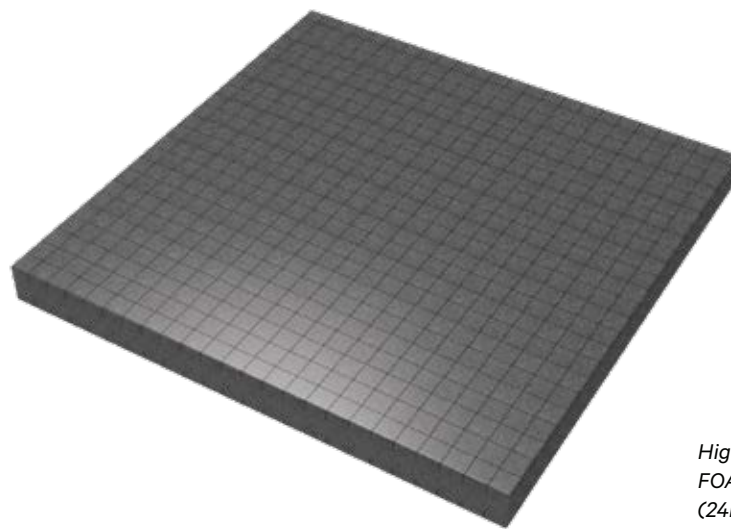


*CBB-72, Copper bus bar, 1676mm (66in)*

## High-density foam sheets, 610 mm × 610 mm (24 × 24 in), perforated, pack of 6

The high-density foam sheets provide an effective solution for airflow management and sealing within rack and enclosure environments. Designed for data center, telecommunications, and enterprise deployments, these sheets help control airflow by sealing openings and reducing air leakage in raised floor and rack applications.

Part number	Description
FOAMBLOCK	610mm x 610mm (24in x 24in) High density foam, perforated 25mm x 25mm (1in x 1in), pack of 6 sheets



High-density foam sheets  
FOAMBLOCK, 610mm x 610mm  
(24in x 24in)

## Extended raised floor grommets for openings, pack of 10

The extended raised floor grommets provide an effective solution for sealing cable openings and improving airflow management within raised floor environments. Designed for data center, telecommunications, and enterprise deployments, these grommets help control airflow while protecting cable entry points from debris and contamination.

Part number	Description
GLKL10012CP	Extended raised floor grommet, for 610mm x 76mm (24in x 3in) openings, pack of 10
GLKL10013CP	Extended raised floor grommet, for 610mm x 152mm (24in x 6in) openings, pack of 10



Extended raised floor grommets  
for 610 mm × 76 mm, GLKL10012CP



## Split mini raised floor grommets for 102 mm × 152 mm (4 × 6 in) openings, pack of 10

The split mini raised floor grommets provide a compact and flexible solution for sealing cable openings and improving airflow management within raised floor environments. Designed for data center, telecommunications, and enterprise deployments, these grommets help control airflow while protecting cable entry points from debris and contamination.

Part number	Description
GLKL10077CP	Split mini raised floor grommet, for 102mm x 152mm (4in x 6in) openings, pack of 10



Split mini raised floor grommets for 102 mm × 152 mm, GLKL10077CP

## Extended raised floor grommets for 1524 mm × 76 mm (60 × 3 in) openings, pack of 10

The extended raised floor grommets provide an effective solution for sealing cable openings and improving airflow management within raised floor environments. Designed for data center, telecommunications, and enterprise deployments, these grommets help control airflow while protecting cable entry points from debris and contamination.

Part number	Description
GLKL10097CP	Extended raised floor grommet, for 1524mm x 76mm (60in x 3in) openings, pack of 10
GLKL10098CP	Extended raised floor grommet, for 1524mm x 152mm (60in x 6in) openings, pack of 10



Extended raised floor grommets for 1524 mm × 76 mm, GLKL10097CP



## Integral raised floor grommets for 235 mm × 171 mm (9.25 × 6.75 in) openings, pack of 10

The integral raised floor grommets provide a reliable solution for sealing cable openings and improving airflow management within raised floor environments. Designed for data center, telecommunications, and enterprise deployments, these grommets help control airflow while protecting cable entry points from debris and contamination.

Part number	Description
GLKL1010CP	Integral raised floor grommet, for 235mm x 171mm (9.25in x 6.75in) openings, pack of 10



*Integral raised floor grommets for 235 mm × 171 mm, GLKL1010CP*

## Floor grommet covers for GLKL1010 and GLKL4040 openings, pack of 10

The floor grommet covers provide an effective solution for sealing unused cable openings and improving airflow management within raised floor environments. Designed for data center, telecommunications, and enterprise deployments, these covers help prevent air leakage while protecting floor openings from debris and contamination.

Part number	Description
GLKL10187CP	Floor grommet cover for GLKL1010 and GLKL4040, pack of 10
GLKL10191CP	Floor grommet cover for GLKL5050, pack of 10



*Floor grommet covers for GLKL4040*



*Floor grommet covers for GLKL5050*



## Split surface mount raised floor grommets for 254 mm × 184 mm (10 × 7.25 In) openings, pack of 10

The split surface mount raised floor grommets provide a flexible and efficient solution for sealing cable openings and improving airflow management within raised floor environments. Designed for data center, telecommunications, and enterprise deployments, these grommets help control airflow while protecting cable entry points from debris and contamination.

Part number	Description
GLKL2020CP	Split surface mount raised floor grommet, for 254mm x 184mm (10in x 7.25in) openings, pack of 10
GLKL2030CP	Split surface mount raised floor grommet, for 254mm x 248mm (10in x 9.75in) openings, pack of 10
GLKL2040CP	Split surface mount raised floor grommet, for 254mm x 330mm (10in x 13in) openings, pack of 10
GLKL3030CP	Split surface mount raised floor grommet, for 235mm x 171mm (9.25in x 6.75in) openings, pack of 10



Split surface mount raised floor grommets for 254 mm × 184 mm, GLKL2020CP



Split surface mount raised floor grommets for 254 mm × 184 mm, GLKL2030CP



Split surface mount raised floor grommets for 254 mm × 184 mm, GLKL2040CP

## Split round raised floor grommets, 102 mm (4 in), pack of 10

The split round raised floor grommets provide a flexible and efficient solution for sealing circular cable openings and improving airflow management within raised floor environments. Designed for data center, telecommunications, and enterprise deployments, these grommets help control airflow while protecting cable entry points from debris and contamination.

Part number	Description
GLKL40001CP	Split round raised floor grommet, 102mm (4in), pack of 10
GLKL40003CP	Split round raised floor grommet, 152mm (6in), pack of 10

## Split integral raised floor grommets for 279 mm × 212 mm (11 × 8.36 in) openings, pack of 10

The split integral raised floor grommets provide a flexible and high-performance solution for sealing cable openings and improving airflow management within raised floor environments. Designed for data center, telecommunications, and enterprise deployments, these grommets help control airflow while protecting cable entry points from debris and contamination.

Part number	Description
GLKL4040CP	Split integral raised floor grommet, for 279mm x 212mm (11in x 8.36in) openings, pack of 10
GLKL5050CP	Split integral raised floor grommet, for 191mm x 188mm (7.50in x 7.39in) openings, pack of 10



Split integral raised floor grommets for 279 mm × 212 mm, GLKL4040CP



Split integral raised floor grommets for 279 mm × 212 mm, GLKL5050CP



## M6 cage nuts with screws, 20 mm length, pack of 50

The M6 cage nuts with screws provide a reliable and standardized solution for securing equipment within rack and enclosure environments. Designed for data center, telecommunications, and enterprise deployments, this hardware kit supports stable and consistent mounting of rack-mounted equipment.

Part number	Description
HDW-105-50L	M6 cage nuts w/ screws, 20mm screw length, package of 50
HDW-106-50	Cage nuts w/ #10-32 screws, package of 50
HDW-107-50	Cage nuts w/ 12-24 x 13mm (1/2in) screws, type 23, package of 50
HDW-109-50PF	Package of 50 pinch free cage nuts and 12mm M6 screws



M6 cage nuts with screws, HDW-105-50L

