



Product brochure

Vertiv™ PowerUPS 100 Standby Series

350VA to 900VA, 230V

Reliable, affordable desktop power protection for PCs, workstations and essential electronics.



Reliable protection.
Modern design.
Everyday peace of mind.

The Vertiv™ PowerUPS 100 Series delivers dependable desktop power protection in a sleek, space-saving design, keeping your electronics safe with built-in battery backup and surge protection. Available in Lithium and VRLA versions, the series lets you choose the option that best fits your usage and lifestyle.

What's in the box:

- Vertiv PowerUPS 100 UPS
- Quick Installation Guide
- Safety Instructions
- USB Cable, Type A to B

Applications:

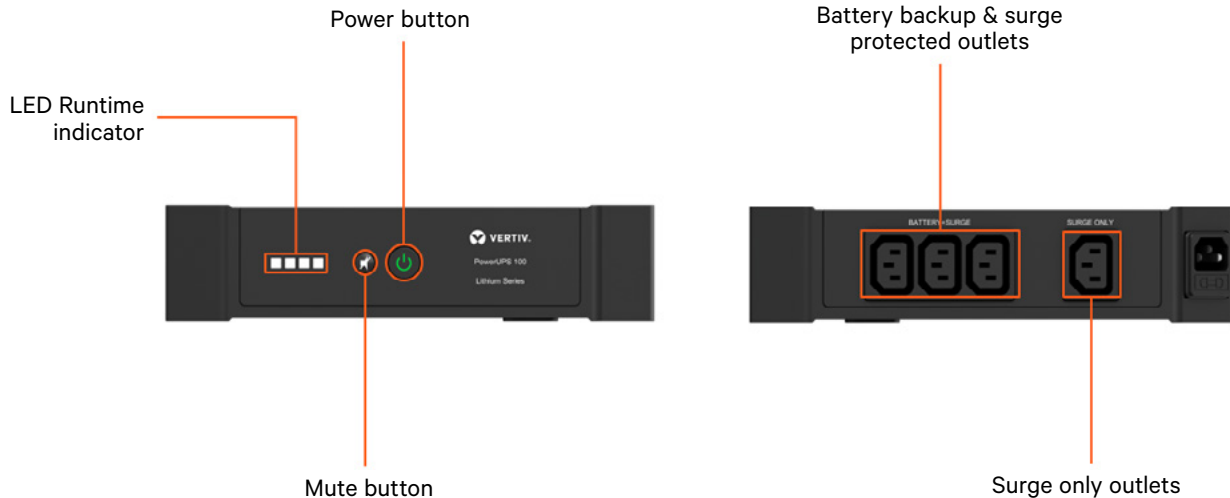
- Personal Computers
- Workstations
- Gaming Consoles
- Kiosks
- Smart home devices
- Surveillance systems
- Wireless Networks
- Retail Point-of-Sale (POS) equipment
- AI Supercomputer (e.g. DGX Spark, Dell GB10)



Vertiv™ PowerUPS 100 Standby Series 230V



Vertiv™ PowerUPS 100 Lithium Standby Series highlights



Features and benefits

Lithium-ion battery:

Lithium-ion technology delivers up to 3 times the life expectancy of lead-acid batteries which reduces maintenance, labor and replacement costs.

Battery and surge protected outlets:

4 total outlets with 3 backup outlets offer enough space and capacity to protect all your critical electronics.

Wall-mountable:

Offers two conveniently located keyhole sockets for mounting the UPS.

Runtime LED indicators:

4 indicators provide a quick view of remaining battery capacity.

Alarm management:

A dedicated mute button allows you to quickly silence alarms.

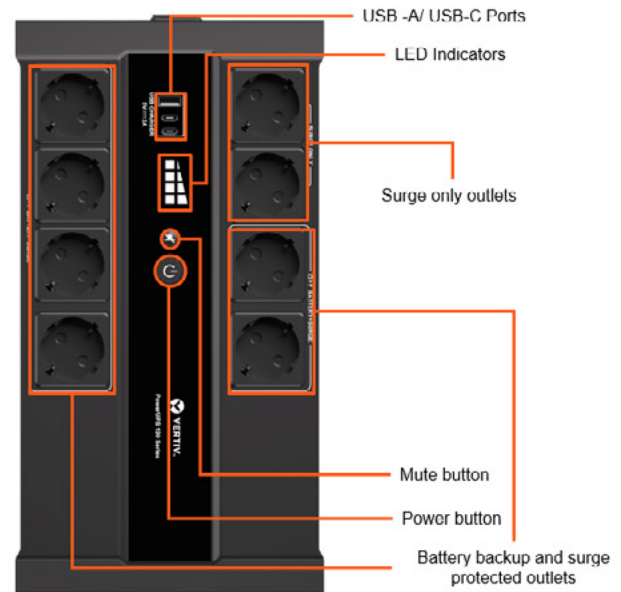
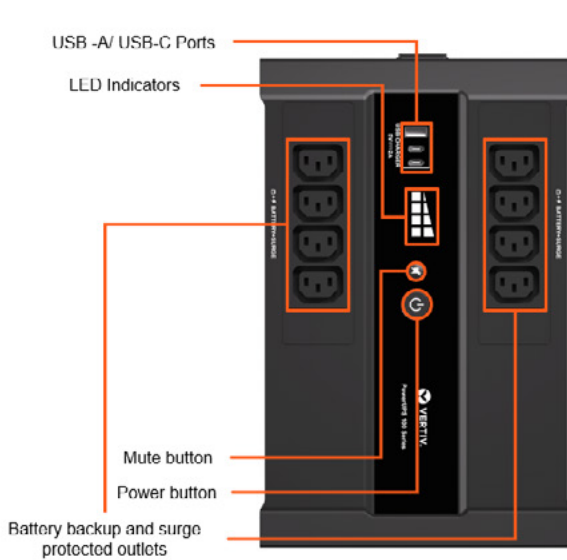
5-Year warranty:

Full unit coverage, including the battery, with an advanced replacement warranty.

Equipment Protection Plan (EPP):

The Equipment Protection Plan offers reimbursement or replacement for any devices damaged by power surges while connected to your Vertiv™ PowerUPS 100 Standby UPS.

Vertiv™ PowerUPS 100 Standby Series highlights



Features and benefits

Up to 8 outlets:

Available with up to 6 battery backup and surge protected outlets and 2 surge only outlets for all your critical devices.

User-replaceable batteries:

Quickly and safely swap out batteries to extend UPS life.

USB-A and USB-C charging ports:

Convenient charging for your mobile devices.

Wall mountable:

Conveniently located keyhole sockets allow the UPS to be easily mounted to a wall or desk.

Runtime LED Indicators:

4 indicators provide a quick view of remaining battery capacity.

Wide range of capacity options:

Choose from 500VA, 700VA, 900VA or 1100VA models to match the power capacity and runtime requirements of your connected devices.

Alarm management:

A dedicated mute button allows you to quickly silence alarms.

3-year warranty:

Full unit coverage, including the battery, with advanced replacement warranty.

Equipment Protection Plan (EPP):

The Equipment Protection Plan offers reimbursement or replacement for any devices damaged by power surges while connected to your Vertiv™ PowerUPS 100 Standby UPS.

Free management software*:

Vertiv™ Power Assist gracefully shuts down your devices during power outages. It is easy to install and helps protect your devices from data loss and equipment damage.

**Excluding PST6-500IT-IEC & PST6=500IT-SCH*



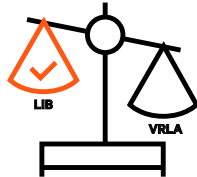
Lithium-Ion key benefits vs VRLA

Lithium-ion is game-changing technology when it comes to UPS batteries. When compared to traditional valve-regulated lead-acid (VRLA) batteries, lithium-ion batteries have greater power density, last up to 3 times longer, recharge much more quickly, and can endure up to 10x more discharge cycles. With a 5-year standard warranty, more than double the useful life, and more runtime, the Vertiv™ PowerUPS 100 Lithium is an ideal choice for electronics that need reliable and economical power protection.

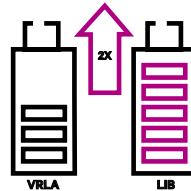
- Up to 3x battery life
- Lowest TCO
- 5-year standard warranty
- Longer runtime
- Quicker recharge times
- Smaller and lighter
- Up to 10x more discharge cycles
- Greater battery performance in higher temperature environments



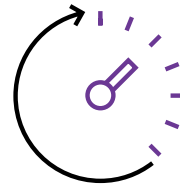
Lowest TCO



Smaller & lighter



Longer life



Longer runtime

Feature	VRLA Battery	LIO battery	Lithium-ion benefit
Standard battery life	3-5 years	8-10 years	Up to 3 times longer life
Typical cycle life	200-260	2000	Up to 10x more discharge/recharge cycles available
Battery recharge time (to 90%)	6-8 hours	2 hours	Fast recovery time, multiple outages can be handled over a short period
Warranty	2-3 years	5 years	Install and go - ideal for remote or unmanned locations

Technical specifications - Vertiv™ PowerUPS 100 Standby Series

Model number			
IEC models	PST6-500IT-IEC	PST6-700IT-IEC	PST6-900IT-IEC
Schuko models	PST6-500IT-SCH	PST6-700IT-SCH	PST6-900IT-SCH
Capacity (VA / W)	500 / 305	700 / 425	900 / 550
Unit dimensions, in (mm) W x D x H			
IEC Models	6.57 x 10.40 x 3.50 (167 x 264 x 89)		7.28 x 11.34 x 3.50 (185 x 288 x 89)
Schuko Models	7.28 x 13.54 x 3.50 (185 x 344 x 89)		
Unit weight, lbs. (kg)			
IEC Models	6.83 lbs (3.1 kg)		9.04 lbs (4.1 kg)
Schuko Models	7.5 lbs (3.4 kg)	9.26 lbs (4.2 kg)	9.48 lbs (4.3 kg)
Shipping dimensions, in (mm) W x D x H			
IEC Models	7.68 x x 14.45 x 10.43 (195 x 367 x 265)		7.68 x x 15.47 x 11.10 (195 x 393 x 282)
Schuko Models			
Shipping weight, lbs. (kg)	26.5 lbs (12.0 kg)	30.9 lbs (14.0 kg)	30.9 lbs (14.0 kg)
Input AC			
Nominal voltage	220-240 VAC		
Voltage range	140-290 VAC		
Frequency range	50/60Hz +/- 5 Hz (auto-sensing)		
Protection	Resettable Circuit Breaker		
Surge protection	Line-Neutral, Line-Ground, and Neutral-Ground		
Surge energy rating	600 Joules		
Input cord	6 ft. IEC C14		
Output AC (on utility)			
Nominal voltage	220-240 VAC		
Voltage range	195-255 VAC		
Frequency range	50/60Hz +/- 1 Hz (auto-sensing)		
Efficiency	Up to 95% @100% Load		
Output AC (on battery)			
Nominal voltage	230 VAC		
Voltage range	230 +/- 10% VAC		
Frequency range	50/60Hz +/- 1 Hz (auto-sensing)		
Waveform	Simulated Sinewave		
Transfer time	2-6 ms, typical (10 ms max)		
Overload capacity	110% for 5 seconds, 120% immediate shutdown		
Protection	Electronic (over current, short circuit, over charge)		
Backup time (half load) mins	2 mins / 11 mins	2 mins / 10 mins	2 mins / 10 mins
Battery type	Sealed Valve Regulated Lead Acid (VRLA)		
Battery backed & surge protected outlets			
IEC Models	8 (IEC)		
Schuko Models	6 (Schuko)		
Surge only outlets			
Schuko Models	2 (Schuko)		
Environmental requirements			
Operating temperature °F (°C)	32 - 104 (0 to 40)		
Operating elevation, ft (m)	0 - 10,000 feet (0 - 3,000)		
Relative humidity	0-90% non-condensing		
Storage temperature °F (°C)	-4 to 104 (-20 to 40)		
Storage elevation, ft (m)	0 - 10,000 feet (0 - 3,000)		
Audible noise	<40dBA @ 3 ft (1m) from all sides	<45dBA @ 3 ft (1m) from all sides	<45dBA @ 3 ft (1m) from all sides
Agency			
Safety	CB, CE, EN/IEC 62040-1, UKCA, RCM, EAC		
RFI / EMI	EN/IEC 62040-2, EN/IEC 61000-3-2, EN 61000-3-3, CAT: C2		
Surge immunity	IEC 61000-4-5		
Environmental	RoHS, REACH, WEEE		
Transportation	ISTA Procedure 3A		
Protection plan			
Equipment protection plan	\$300,000		



Technical specifications - Vertiv™ PowerUPS 100 Lithium Standby Series

Model number	PUL-350IMT-IEC
Capacity (VA / W)	350 / 210
Unit dimensions, in (mm) W x D x H	243 x 187 x 58 (9.57 x 7.36 x 2.28)
Unit weight, lbs. (kg)	1.40 kg (3.10 lbs)
Shipping dimensions, in (mm) W x D x H	340 x 283 x 150 (13.39 x 11.14 x 5.91)
Shipping weight, lbs. (kg)	2.30 kg (5.10 lbs)
Input AC	
Nominal voltage	220-240 VAC
Voltage range	160-278 VAC
Frequency range	50/60Hz +/- 5 Hz (auto-sensing)
Protection	Replaceable Fuse
Surge protection	Line-Neutral, Line-Ground, and Neutral-Ground
Surge energy rating	375 Joules
Input cord	6 ft. IEC C14
Output AC (on utility)	
Nominal voltage	230 VAC
Voltage range	160-278 VAC
Frequency range	50/60Hz +/- 5 Hz (auto-sensing)
Efficiency	Up to 97% @100% Load
Output AC (on battery)	
Nominal voltage	230 VAC
Voltage range	230 +/- 8% VAC
Frequency range	50/60Hz +/- 5 Hz (auto-sensing)
Waveform	Simulated Sinewave
Transfer time	8 ms, typical (10 ms max)
Overload capacity	110% for 5 seconds, 120% immediate shutdown
Protection	Electronic (over current, short circuit, over load)
Backup time (half load) mins	2 mins / 8 mins
Battery type	Lithium-Ion
Battery backed & surge protected outlets	3 (IEC)
Surge only outlets	1 (IEC)
Environmental requirements	
Operating temperature °F (°C)	0 to 40 (32 - 104)
Operating elevation, ft (m)	0 - 3,000 (0 - 10,000)
Relative humidity	0-95% non-condensing
Storage temperature °F (°C)	14 to 122 (-10 to 50)
Storage elevation, ft (m)	0-3,000 (0 - 10,000)
Audible noise	<45dBA @ 1m (3ft) from all sides
Agency	
Safety	CB, CE, EN/IEC 62040-1
RFI / EMI	EN/IEC 62040-2, EN/IEC 61000-4-1, CAT: C2
Surge immunity	IEC 61000-4-5 +/-2KV
Environmental	RoHS, REACH, WEEE
Transportation	ISTA Procedure 3A
Protection plan	
Equipment protection plan	\$200,000

Internal replacement battery kits

Replacement battery kit	Compatible UPS model
VBATKIT102	PST6-500IT-IEC ; PST6-500IT-SCH ; PST6-700IT-IEC
VBATKIT104	PST6-700IT-SCH ; PST6-900IT-IEC ; PST6 - 900IT-SCH





Vertiv.com | Vertiv Headquarters, 505 N Cleveland Ave, Westerville, OH 43082, USA

© 2026 Vertiv Group Corp. All rights reserved. Vertiv™ and the Vertiv logo are trademarks or registered trademarks of Vertiv Group Corp. All other names and logos referred to are trade names, trademarks or registered trademarks of their respective owners. While every precaution has been taken to ensure accuracy and completeness here, Vertiv Group Corp. assumes no responsibility, and disclaims all liability, for damages resulting from use of this information or for any errors or omissions. Specifications, rebates and other promotional offers are subject to change at Vertiv's sole discretion upon notice.