

Solution: SR2N03010PAA2

1. Change Log..... 3

2. Site Planning Datasheet..... 4

3. Interconnection Guide (ICG)..... 5

4. Field Supplied Cable & Part List 20

5. Vertiv MSR2 600mm IT Rack 21

6. Vertiv MSR2 Power Management Cabinet (PMC) 22

7. Vertiv Liebert CRD10 with Plenums..... 23

8. Vertiv MSR2 Fire Suppression System (FSS)..... 24

9. Power Management Unit - 10kW (PMU10) 25

10.PMU10 Terminal Blocks Size 26

11. Vertiv MSR2 - CT600 Cable Tray 600mm 27

12. Scope of Work 28

1. Change Log

Rev	Date	Author	Description	Number of Change
A	1/29/2024	TK	Initial Release	CO-1104874
B	4/7/2025	TK	ICGs Update	CO-1112923


2. Site Planning Datasheet

Smart Row 2 Site Planning Datasheet (208V, 3 phase, 4 wire + PE)


Configuration Number	Part Number	Max Row Capacity (kW)	IT Racks per Row	Capacity per Rack (kW)	Cooling Units per Row	pdu count	Main Input Breaker Size ⁶	Per Condenser Breaker Size	Per Condenser Dry Weight kg (lbs)	Row Dimensions (L x H x D) mm (in)7	Row Weight kg (lbs)	Min. Staging Area m2 (ft2)
16	SR2N02010NAA2	10	2	5	1	2	100A	N/A ⁵	60 (132.3)	2700 (106.3) x 2271 (107) x 1400 (55.2)	2048 (4516)	15.76 (169.7)
17	SR2N02010PAA2	10	2	5	1	4	100A	N/A ⁵	60 (132.3)	2700 (106.3) x 2271 (107) x 1400 (55.2)	2076 (4577)	16.34 (175.9)
18	SR2N02010FAA2	10	2	5	2	4	100A	N/A ⁵	60 (132.3)	3000 (118.2) x 2271 (107) x 1400 (55.2)	2696 (5945)	19.02 (204.8)
19	SR2N03010NAA2	10	3	3	1	3	100A	N/A ⁵	60 (132.3)	3300 (130) x 2271 (107) x 1400 (55.2)	2218 (4890)	17.11 (184.2)
20	SR2N03010PAA2	10	3	3	1	6	100A	N/A ⁵	60 (132.3)	3300 (130) x 2271 (107) x 1400 (55.2)	2260 (4983)	17.69 (190.5)
21	SR2N03010FAA2	10	3	3	2	6	100A	N/A ⁵	60 (132.3)	3600 (141.8) x 2271 (107) x 1400 (55.2)	2880 (6350)	20.37 (219.3)
22	SR2N03020NAA2	20	3	6	1	3	175A	15A	118 (260.2)	3300 (130) x 2271 (107) x 1400 (55.2)	2448 (5397)	19.81 (213.3)
23	SR2N03020PAA2	20	3	6	1	6	175A	15A	118 (260.2)	3300 (130) x 2271 (107) x 1400 (55.2)	2490 (5490)	21.86 (235.3)
24	SR2N03020FAA2	20	3	6	2	6	175A	15A	118 (260.2)	3600 (141.8) x 2271 (107) x 1400 (55.2)	3110 (6857)	25.77 (277.4)
25	SR2N04020NAA2	20	4	5	1	4	175A	15A	118 (260.2)	3900 (153.6) x 2271 (107) x 1400 (55.2)	2618 (5772)	21.16 (227.8)
26	SR2N04020PAA2	20	4	5	1	8	175A	15A	118 (260.2)	3900 (153.6) x 2271 (107) x 1400 (55.2)	2674 (5896)	23.21 (249.9)
27	SR2N04020FAA2	20	4	5	2	8	175A	15A	118 (260.2)	4200 (165.4) x 2271 (107) x 1400 (55.2)	3294 (7263)	27.12 (292)
28	SR2N05020NAA2	20	5	4	1	5	175A	15A	118 (260.2)	4500 (177.2) x 2271 (107) x 1400 (55.2)	2788 (6147)	22.51 (242.3)
29	SR2N05020PAA2	20	5	4	1	10	175A	15A	118 (260.2)	4500 (177.2) x 2271 (107) x 1400 (55.2)	2858 (6301)	24.56 (264.4)
30	SR2N05020FAA2	20	5	4	2	10	175A	15A	118 (260.2)	4800 (189.0) x 2271 (107) x 1400 (55.2)	3478 (7669)	28.47 (306.5)

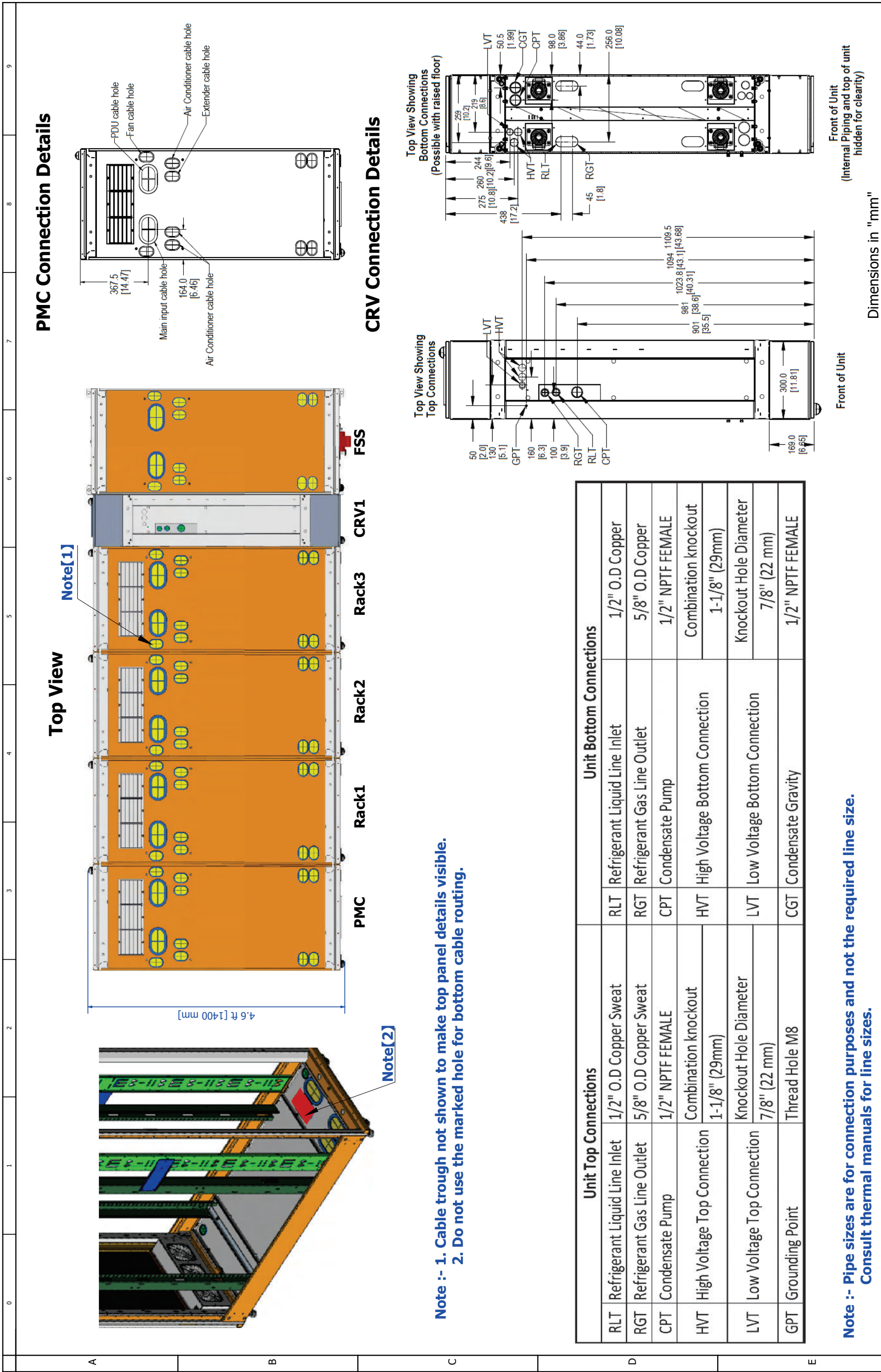
NOTES:

- System Environmental Conditions: Indoors, 41°F to 104°F (5°C to 40°C), RH to 80% with Max dew point of 82.4°F (28°C)
- Floor surface must be level and continuous (expansion joints sealed, raised floor tile gaps sealed, no floor drains, etc).
- No building sprinkler head should be within 19.7 in (0.5 m).
- Install in accordance with national and local electrical codes
- 10kW condenser power is sourced from the indoor unit
- Cable Sizing: 100A = 3 AWG ; 175A = 2/0 AWG
- Row Dimensions do not include necessary space needed for access including per ADA or local codes.
- Fire Suppression cabinet requires its own minimum 15A 120V utility drop.

SHEET NO.	DRAWN BY:	© 2021 VERTIV GROUP CORPORATION. CONFIDENTIAL AND PROPRIETARY. ALL RIGHTS RESERVED VERTIV AND THE VERTIV LOGO ARE TRADEMARKS OR REGISTERED TRADEMARKS OF VERTIV GROUP CORPORATION. THIS DOCUMENT VERTIV GROUP CORPORATION. IT IS NOT TO BE REPRODUCED, COPIED, OR TRANSMITTED IN ANY FORM OR BY ANY MEANS, ELECTRONIC OR MECHANICAL, INCLUDING PHOTOCOPYING, RECORDING, OR BY ANY INFORMATION STORAGE AND RETRIEVAL SYSTEM, WITHOUT THE EXPRESS WRITTEN PERMISSION OF VERTIV GROUP CORPORATION. THIS DOCUMENT SHALL BE RETURNED TO VERTIV GROUP CORPORATION IMMEDIATELY UPON REQUEST.		DWG. NO.	 VERTIV™	
CO. NO.	DESIGNED BY:	DATE (LATEST REV.)				
REF. DWG.	APPROVED BY:	TITLE		REVISION	505 N. CLEVELAND AVE WESTERVILLE, OHIO 43081	
Smart Row 2 Site Planning Datasheet (208V, 3 phase, 4 wire + PE)						

3. Interconnection Guide (ICG)

<div><div>VERTIV™</div><div>Vertiv Row Solution</div><div>Knowledge to Build Optimized Infrastructure Solutions</div></div>									
Vertiv™ SmartRow™ 2: 3x IT Rack 10kW With Fire Suppression System									
<div><div></div><div><div>Row IT Load Capacity: 10 kW</div><div>Power Redundancy UPS: Yes</div><div>Power Redundancy rPDU: Yes</div><div>Cooling Redundancy: No</div><div>Fire Suppression: Yes</div><div>Dimensions:</div><div>Length: 10.83 ft [3300 mm]</div><div>Depth: 4.6 ft [1400 mm]</div><div>Height: 7.38 ft [2250 mm]</div></div></div>									
SHEET NO. 1 / 15		DRAWN BY: Nilesch Patil		DWG NO. SR2N03010PAA2					
CHANGE NO.		APPROVED BY: Gmerek, Mike		DATE (LATEST REV.)		REVISION:			
PAGE DESCRIPTION: 1- Title page / cover sheet		TITLE / DESCRIPTION: Vertiv™ SmartRow™ 2: 3x IT Rack 10kW With Fire Suppression System		505 N. CLEVELAND AVE WESTERVILLE OH 43081					
© 2020 VERTIV GROUP CORPORATION CONFIDENTIAL AND PROPRIETARY. ALL RIGHTS RESERVED. VERTIV AND THE VERTIV LOGO ARE TRADEMARKS OR REGISTERED TRADEMARKS OF VERTIV GROUP CORPORATION. THIS DOCUMENT (AND THE INFORMATION IT CONTAINS) ARE THE PROPERTY OF VERTIV GROUP CORPORATION BY ACCEPTING IT INTO YOUR POSSESSION, YOU AGREE THAT YOU WILL KEEP THIS DOCUMENT AND ALL INFORMATION CONTAINED HEREIN IN STRICTEST CONFIDENCE AND WILL NOT COPY, REPRODUCE, RENT, LEASE, LOAN, OR OTHERWISE DISCLOSE OF SAME, DIRECTLY OR INDIRECTLY, WITHOUT THE EXPRESS WRITTEN PERMISSION OF VERTIV GROUP CORPORATION. IMMEDIATELY UPON REQUEST.				VERTIV™					

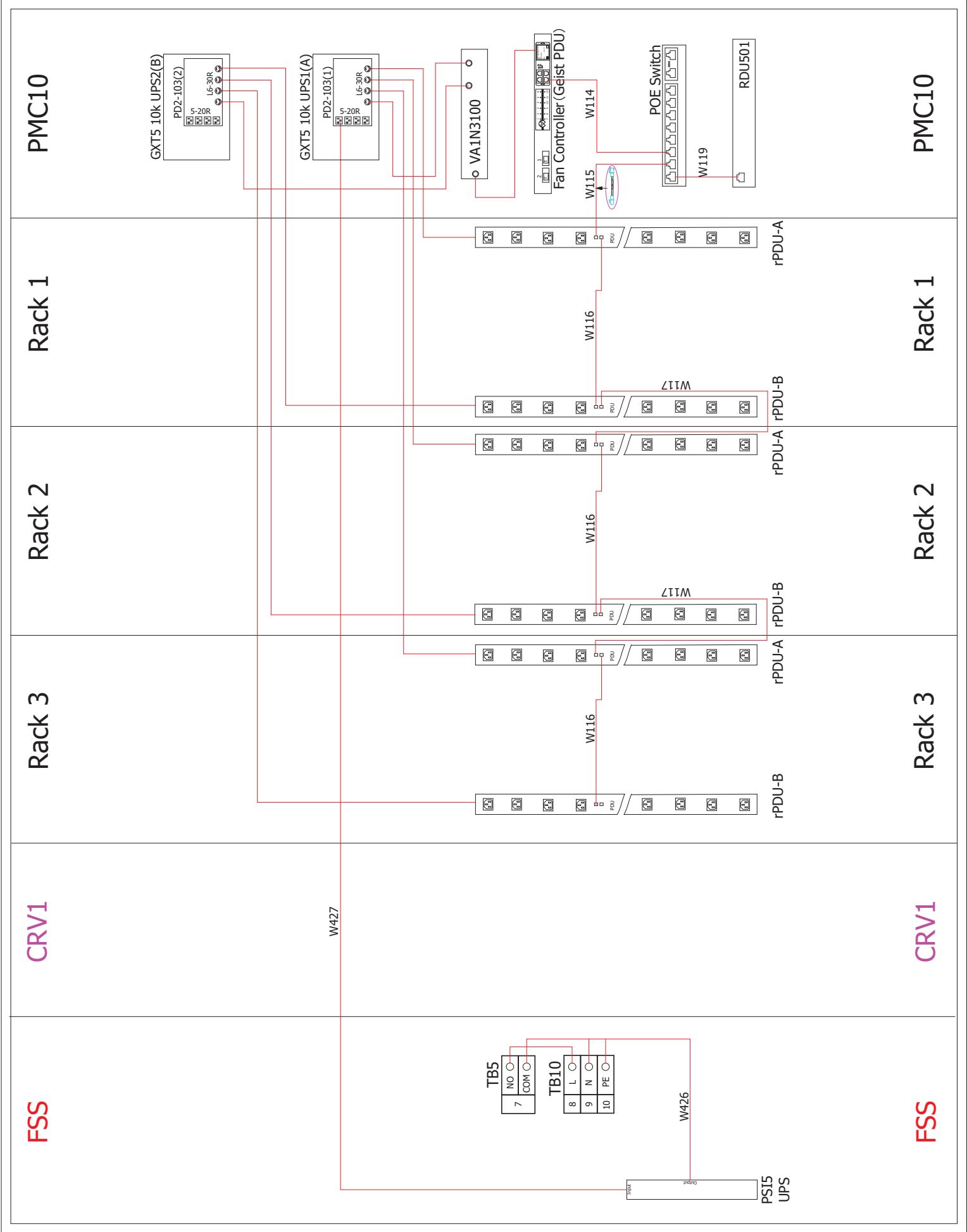




Cable overview



		0		1		2		3		4		5		6		7		8		9	
Cable overview																					
A		Packaging No.		Cable Category		Cable No.		Tag1		Tag2		Length (inch/mm)		Description							
		0411A816		Smart door lock cascade cable		W201		PMC-LOCK		RACK-LOCK		33.46/850		PMC to RACK1 power cascade cable							
				Water immersion to RDU501		W213		Water Leak2		RDU501_DI2		216.5/5500		Water immersion 1 to RDU501 communication cable							
				Smart door lock cascade cable		W206		RACK-FLOCK		AC-FLOCK		13.8/350		RACK3 to CRV1 F-Door communication cascade cable							
				Smart door lock cascade cable		W206/W207-AC		I-LOCK		F-R/BK W206, R-R/BK W207		82.7/2100		Smart door lock cable from rear door to front door in CRV1							
				Smart door lock cascade cable		W207		PMC-RLOCK		RACK-RLOCK		25.6/650		PMC to RACK1 R-Door communication cascade cable.							
				Rear door light cascade cable		W210		PMC_RLIGHT		RACK_RLIGHT		25.6/650		PMC to RACK1 rear door LED light cascade cable							
				Rear door microswitch cascade		W211		PMC_R-SW		RACK_R-SW		25.6/650		PMC to RACK1 cascade cables for rear door microswitches							
				CRV's microswitch and Smart door lock cascade		W401-L		RDU:Smoke2		W401-L 385		177.2/4500		Microswitch communication cable from PMC to CRV1							
				Emergency fan to FC		W209		FC Port1		PMC-FAN		51.2/1300		PMC Emergency fan to FC controller cable							
				Emergency fan to FC		W208		FC Port2/3/4		RACK1/2/3-FAN		122/3100		Rack1 Emergency fan to FC controller cable							
				Emergency fan to FC		W208		FC Port2/3/4		RACK1/2/3-FAN		122/3100		Rack2 Emergency fan to FC controller cable							
				Emergency fan to FC		W208		FC Port2/3/4		RACK1/2/3-FAN		122/3100		Rack3 Emergency fan to FC controller cable							
				Smart door lock cascade cable		W206/W207-AC		I-LOCK		F-R/BK W206, R-R/BK W207		82.7/2100		Smart door lock cable from rear door to front door in FSS							
		0411A859		Communication cable		W116		PDU		PDU		157.5/4000		PDU1A to PDU1B communication cable							
				Communication cable		W117		PDU		PDU		118.1/3000		PDU1B to PDU2A communication cable							
				Communication cable		W116		PDU		PDU		157.5/4000		PDU2A to PDU2B communication cable							
				Communication cable		W117		PDU		PDU		118.1/3000		PDU2B to PDU3A communication cable							
				Communication cable		W116		PDU		PDU		157.5/4000		PDU3A to PDU3B communication cable							
				Communication cable		W114		FC		Switcher(From FC)		70.9/1800		FC to Switch communication cable							
				Communication cable		W115		PDU1		Switcher(From PDU)		70.9/1800		PDU to Switch communication cable							
				Communication cable		W119		RDU501		Switcher(From RDU501)		47.2/1200		RDU501 to Switch Communication Cable							
				Power cable		W04		PMU TO CRV2		-		165.4/4200		PMU to CRV1 power cable							
				Communication cable		W111		CRV2		Switcher(From CRV2)		196.9/5000		CRV1 to Switch communication cable							
				Power cable		W01		PMU-UPS1 INPUT L1 L2 N G		UPS1-INPUT L1 L2 N G		94.5/2400		PMU to UPS1 input cable							
				Power cable		W02		PMU-UPS2 INPUT L1 L2 N G		UPS2-INPUT L1 L2 N G		86.6/2200		PMU to UPS2 input cable							
				Power cable		W03		UPS OUTPUT		PMU UPS1-Output		94.5/2400		UPS1 to PMU output cable							
				Communication cable		W112		UPS1		Switcher(From UPS1)		157.5/4000		UPS 1 to Switch communication cable							

FC & Geist PDUs -SR2-FSS for 10K(3*ITRack)



Rear View

Factory connected cables
Cables connected at assembly

SHEET NO. 8 / 15	DRAWN BY: Nilesh Patil	DWG NO. SR2N03010PAA2	
	APPROVED BY: Gmerek, Mike	DATE (LATEST REV.)	
	PAGE DESCRIPTION: 4- PDU wiring diagram	REVISION: 505 N. CLEVELAND AVE WESTERVILLE OH 43081	
TITLE / DESCRIPTION: Vertiv™ SmartRow™ 2: 3x IT Rack 10kW With Fire Suppression System		 	

[illegible]

Factory connected cables

Cables connected at assembly

SHEET NO.	10 / 15	DRAWN BY:	Nilesh Patil	© 2020 VERTIV GROUP CORPORATION CONFIDENTIAL AND PROPRIETARY. ALL RIGHTS RESERVED. VERTIV AND THE VERTIV LOGO ARE TRADEMARKS OR REGISTERED TRADEMARKS OF VERTIV GROUP CORPORATION. THIS DOCUMENT IS UNCLASSIFIED AND NOT FOR PUBLIC RELEASE. ALL INFORMATION CONTAINED HEREIN IS STRICTLY CONFIDENTIAL AND WILL NOT BE COPIED, REPRODUCED, TRANSMITTED, OR OTHERWISE DISCLOSED TO ANY OTHER PARTY WITHOUT THE EXPRESS WRITTEN PERMISSION OF VERTIV GROUP CORPORATION, AND THIS DOCUMENT SHALL BE RETURNED TO VERTIV GROUP CORPORATION IMMEDIATELY UPON REQUEST.
CHANGE NO.		APPROVED BY:	Gmerek, Mike	
PAGE DESCRIPTION:	4.b. Intelligent lock wiring diagram			
TITLE / DESCRIPTION:				Vertiv™ SmartRow™ 2: 3x IT Rack 10kW With Fire Suppression System
DWG NO.				SR2N03010PAA2
DATE (LATEST REV.)				
REVISION:				505 N. CLEVELAND AVE WESTERVILLE OH 43081

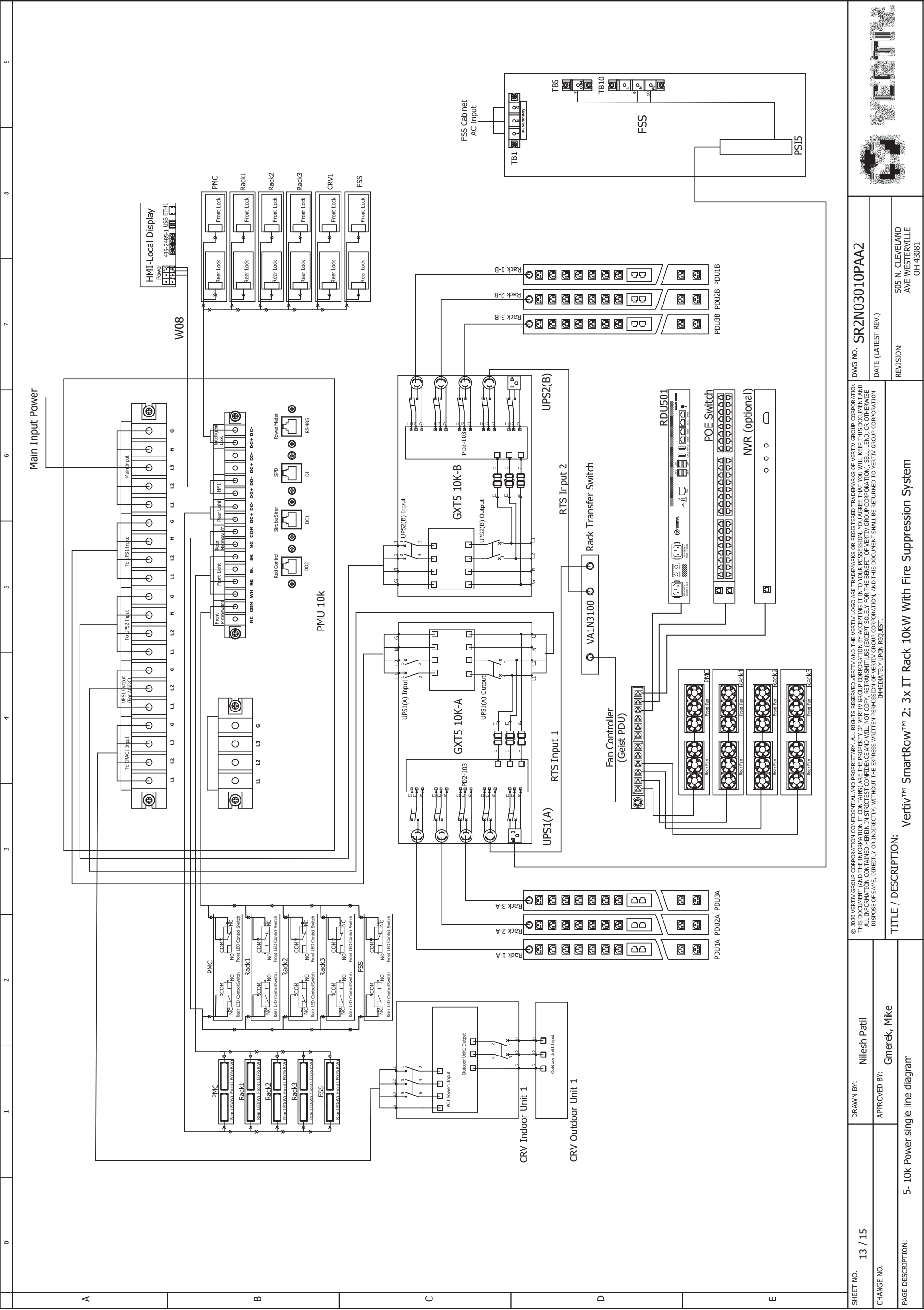
	0	1	2	3	4	5	6	7	8	9
	<div>LED & Micro Switch-SR2-FSS for 10k (3*ITRack)</div>									
A										
B										
C										
D										
E										

Factory connected cables

Cables connected at assembly

Rear View

PAGE DESCRIPTION: 4-c- LED&Micro Switch wiring diagram		DRAWN BY: Nilesh Patil		DWS NO. SR2N03010PAA2		 VERTIV TM
APPROVED BY: Gmerek, Mike		DATE (LATEST REV.)		REVISION:		
CHANGE NO.		TITLE / DESCRIPTION: Vertiv TM SmartRow TM 2: 3x IT Rack 10kW With Fire Suppression System		505 N. CLEVELAND AVE WESTERVILLE OH 43081		
<p>© 2020 VERTIV CORPORATION CONFIDENTIAL AND PROPRIETARY. ALL RIGHTS RESERVED. VERTIV AND THE VERTIV LOGO ARE TRADEMARKS OR REGISTERED TRADEMARKS OF VERTIV GROUP CORPORATION. THIS DOCUMENT (AND THE INFORMATION IT CONTAINS) ARE THE PROPERTY OF VERTIV GROUP CORPORATION BY ACCEPTING IT INTO YOUR POSSESSION, YOU AGREE THAT YOU WILL KEEP THIS DOCUMENT AND ALL INFORMATION CONTAINED HEREIN IN STRICTEST CONFIDENCE AND WILL NOT COPY, REPRODUCE, USE (EXCEPT SOLELY FOR THE BENEFIT OF VERTIV GROUP CORPORATION), SELL, LEND, OR OTHERWISE DISPOSE OF SAME, DIRECTLY OR INDIRECTLY, WITHOUT THE EXPRESS WRITTEN PERMISSION OF VERTIV GROUP CORPORATION, AND THIS DOCUMENT SHALL BE RETURNED TO VERTIV GROUP CORPORATION IMMEDIATELY UPON REQUEST.</p>						

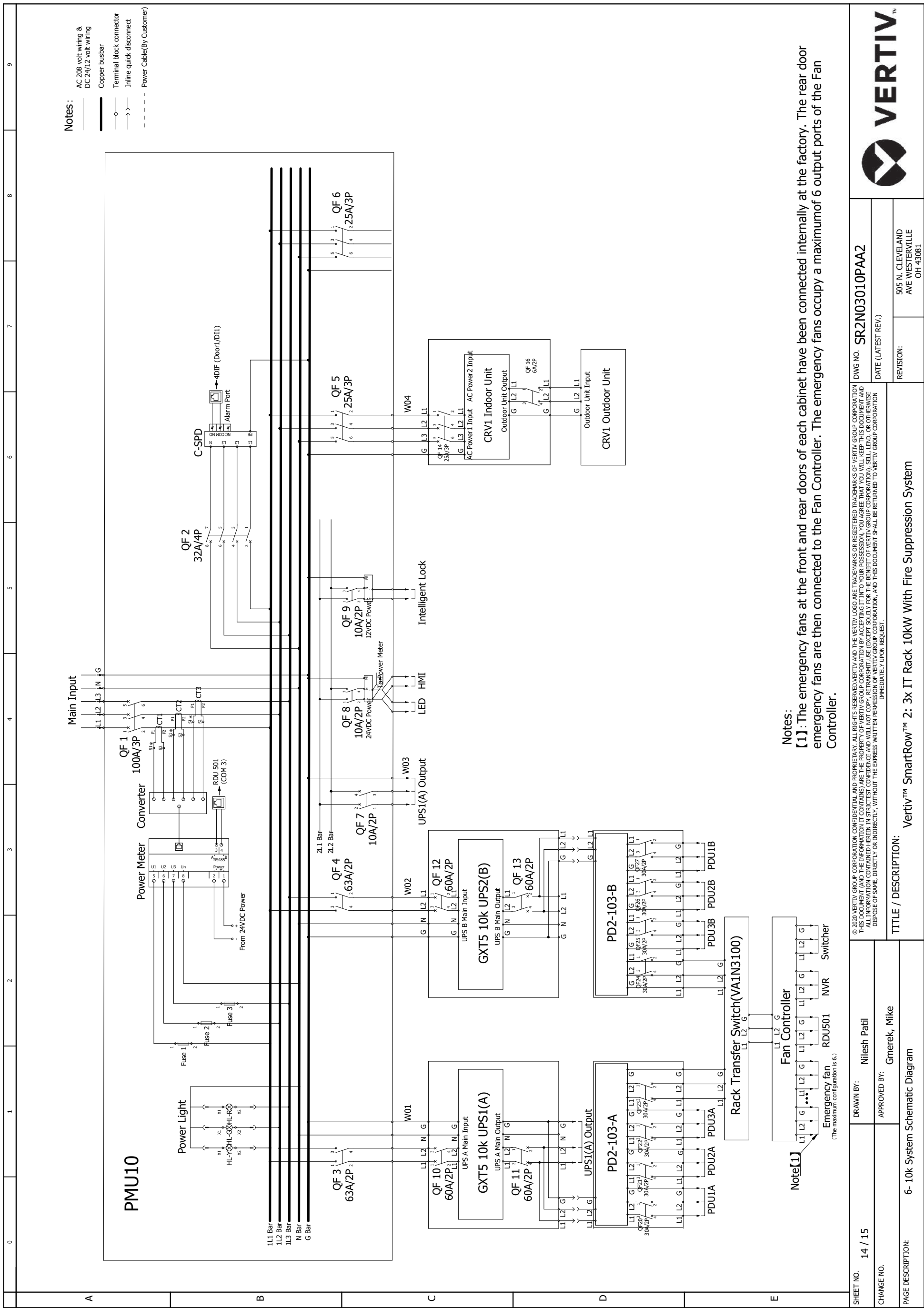


SHEET NO.	13 / 15	DRAWN BY:	Nilesh Patil
CHANGE NO.		APPROVED BY:	Gmerek, Mike
PAGE DESCRIPTION:	5- 10k Power single line diagram		

© 2020 VERTIV GROUP CORPORATION. CONFIDENTIAL AND PROPRIETARY. ALL RIGHTS RESERVED. VERTIV AND THE VERTIV LOGO ARE TRADEMARKS OR REGISTERED TRADEMARKS OF VERTIV GROUP CORPORATION. THIS DOCUMENT AND THE INFORMATION IT CONTAINS ARE THE PROPERTY OF VERTIV GROUP CORPORATION. NO PART OF THIS DOCUMENT MAY BE REPRODUCED OR TRANSMITTED IN ANY FORM OR BY ANY MEANS, ELECTRONIC OR MECHANICAL, INCLUDING PHOTOCOPYING, RECORDING, OR BY ANY INFORMATION STORAGE AND RETRIEVAL SYSTEM, WITHOUT THE EXPRESS WRITTEN PERMISSION OF VERTIV GROUP CORPORATION, AND THIS DOCUMENT SHALL BE RETURNED TO VERTIV GROUP CORPORATION IMMEDIATELY UPON REQUEST.	Vertiv™ SmartRow™ 2: 3x IT Rack 10kW With Fire Suppression System
TITLE / DESCRIPTION:	

DWG NO.	SR2N03010PAA2
DATE (LATEST REV.)	
REVISION:	505 N. CLEVELAND AVE WESTERVILLE OH 43081





4. Field Supplied Cable & Part List

[illegible]

Net weight: 150 kg
Shipping weight: 250 kg

SHEET NO.
1 OF 1

CO. NO.
-

REF. DWG.
-

DRAWN BY:
Terry

DESIGNED BY:
TIT

APPROVED BY:
LE

DWG. NO.
MSR2-NR6S

DATE (LATEST REV.)

REVISION
505 N. CLEVELAND AVE
WESTERVILLE, OHIO 43082

VERTIV™

1. ALL DIMENSIONS ARE IN INCHES (MM)
2. FRONT AND REAR DOOR WITH THE GLASS AND INTELLIGENT LOCKS.
3. SWING RADIUS OF 120° (FRONT AND REAR DOORS)
4. EACH RACK HAS FOUR FEET BOLT AND ROLL WHEELS;
5. ON THE BOTTOM FRONT DOOR SIDE, THERE IS AN EMERGENCY FAN UNIT (3 FANS); ON THE TOP OF REAR DOOR SIDE, THERE IS AN EMERGENCY FAN UNIT (3 FANS);
6. ON THE TOP FRONT FRAME, THERE IS A TRI-COLOR LED AND MICRO SWITCH; ON THE TOP REAR FRAME SIDE, THERE IS A WHITE COLOR LED AND MICRO SWITCH.

NOTES:

7. 2020 VERTIV GROUP CORPORATION CONFIDENTIAL AND PROPRIETARY. ALL RIGHTS RESERVED. VERTIV AND THE VERTIV LOGO ARE TRADEMARKS OR REGISTERED TRADEMARKS OF VERTIV GROUP CORPORATION. THIS DOCUMENT AND THE INFORMATION IT CONTAINS ARE THE PROPERTY OF VERTIV GROUP CORPORATION. BY ACCEPTING IT INTO YOUR POSSESSION, YOU AGREE THAT YOU WILL KEEP THIS DOCUMENT AND ALL INFORMATION CONTAINED HEREIN IN STRICTEST CONFIDENCE AND WILL NOT COPY, REPRODUCE, TRANSMIT, OR OTHERWISE DISCLOSE IT TO ANY OTHER PERSON OR ENTITY WITHOUT THE EXPRESS WRITTEN PERMISSION OF VERTIV GROUP CORPORATION. AND THIS DOCUMENT SHALL BE RETURNED TO VERTIV GROUP CORPORATION IMMEDIATELY UPON REQUEST.

TOP VIEW

Emergency fan outlet
Power Cable through holes
Micro Switch

FRONT VIEW


Glass door
Intelligent lock
Emergency fan inlet
4" feet bolt
4" roll wheels

FRONT SIDE VIEW

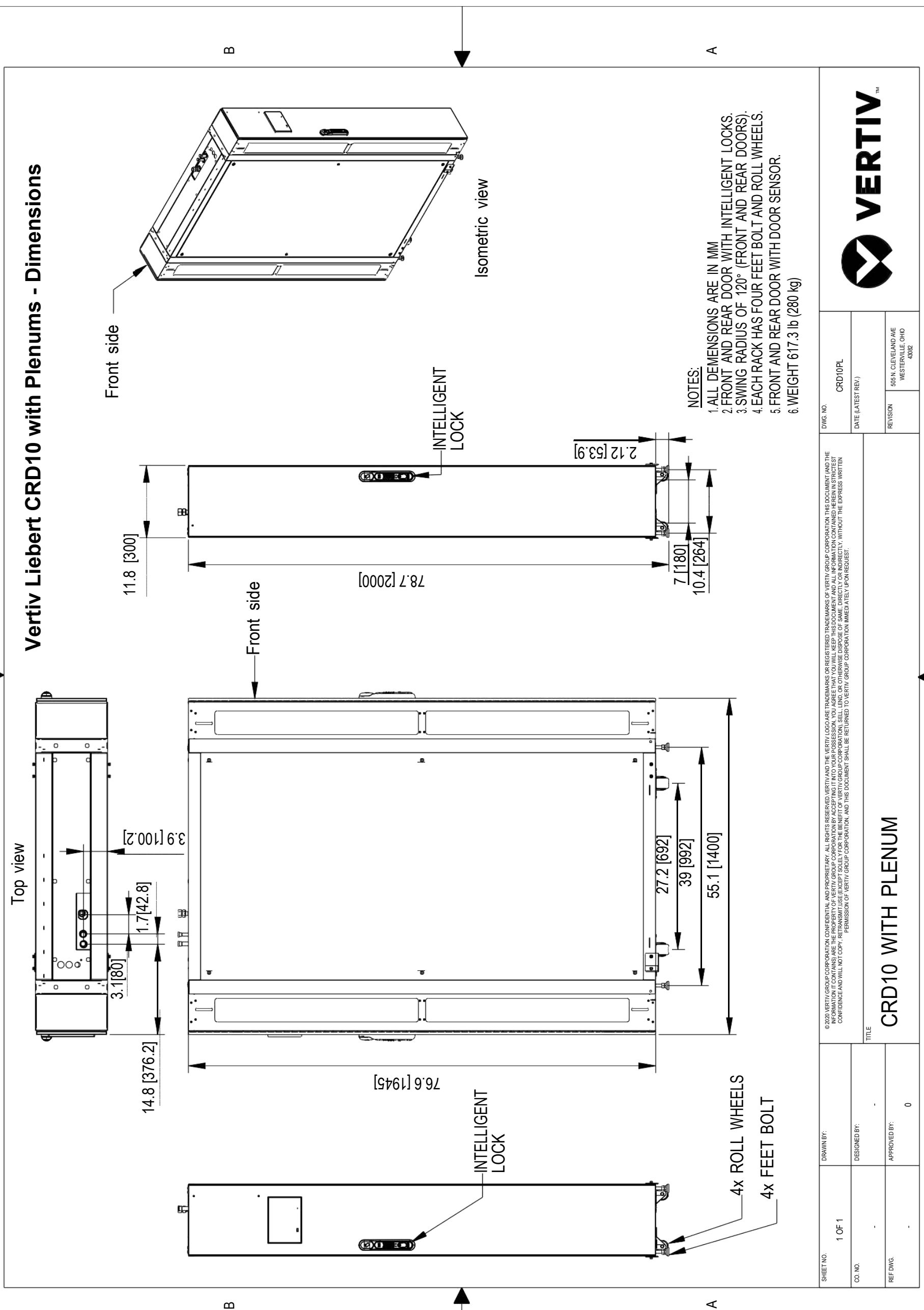
REAR VIEW

Glass door
Intelligent lock

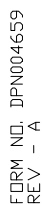
2020 VERTIV GROUP CORPORATION CONFIDENTIAL AND PROPRIETARY. ALL RIGHTS RESERVED. VERTIV AND THE VERTIV LOGO ARE TRADEMARKS OR REGISTERED TRADEMARKS OF VERTIV GROUP CORPORATION. THIS DOCUMENT AND THE INFORMATION IT CONTAINS ARE THE PROPERTY OF VERTIV GROUP CORPORATION. BY ACCEPTING IT INTO YOUR POSSESSION, YOU AGREE THAT YOU WILL KEEP THIS DOCUMENT AND ALL INFORMATION CONTAINED HEREIN IN STRICTEST CONFIDENCE AND WILL NOT COPY, REPRODUCE, TRANSMIT, OR OTHERWISE DISCLOSE IT TO ANY OTHER PERSON OR ENTITY WITHOUT THE EXPRESS WRITTEN PERMISSION OF VERTIV GROUP CORPORATION. AND THIS DOCUMENT SHALL BE RETURNED TO VERTIV GROUP CORPORATION IMMEDIATELY UPON REQUEST.

SHEET NO.	1 OF 1	DRAWN BY:	Terry	<p>© 2020 VERTIV GROUP CORPORATION. ALL RIGHTS RESERVED. VERTIV AND THE VERTIV LOGO ARE TRADEMARKS OR REGISTERED TRADEMARKS OF VERTIV GROUP CORPORATION. THIS DOCUMENT (AND THE INFORMATION IT CONTAINS) ARE THE PROPERTY OF VERTIV GROUP CORPORATION. BY ACCEPTING IT INTO YOUR POSSESSION, YOU AGREE THAT YOU WILL KEEP THIS DOCUMENT AND ALL INFORMATION CONTAINED HEREIN IN STRICTEST CONFIDENCE AND WILL NOT COPY, REPRODUCE, TRANSMIT, USE (EXCEPT SOLELY FOR THE BENEFIT OF VERTIV GROUP CORPORATION), SELL, LEND, OR OTHERWISE DISPOSE OF SAME, DIRECTLY OR INDIRECTLY, WITHOUT THE EXPRESS WRITTEN PERMISSION OF VERTIV GROUP CORPORATION, AND THIS DOCUMENT SHALL BE RETURNED TO VERTIV GROUP CORPORATION IMMEDIATELY UPON REQUEST.</p>
CD. NO.	-	DESIGNED BY:		
REF DWG.	-	APPROVED BY:		
<div> <div>  <div> <div>VERTIV</div> <div>TM</div> </div> </div> <div> <div>DWG. NO.</div> <div>MSR2-PMC</div> <div>DATE (LATEST REV.)</div> </div> </div>			<div> <div>REVISION</div> <div>505 N. CLEVELAND AVE WESTERVILLE, OHIO 43082</div> </div>	

7. Vertiv Liebert CRD10 with Plenums

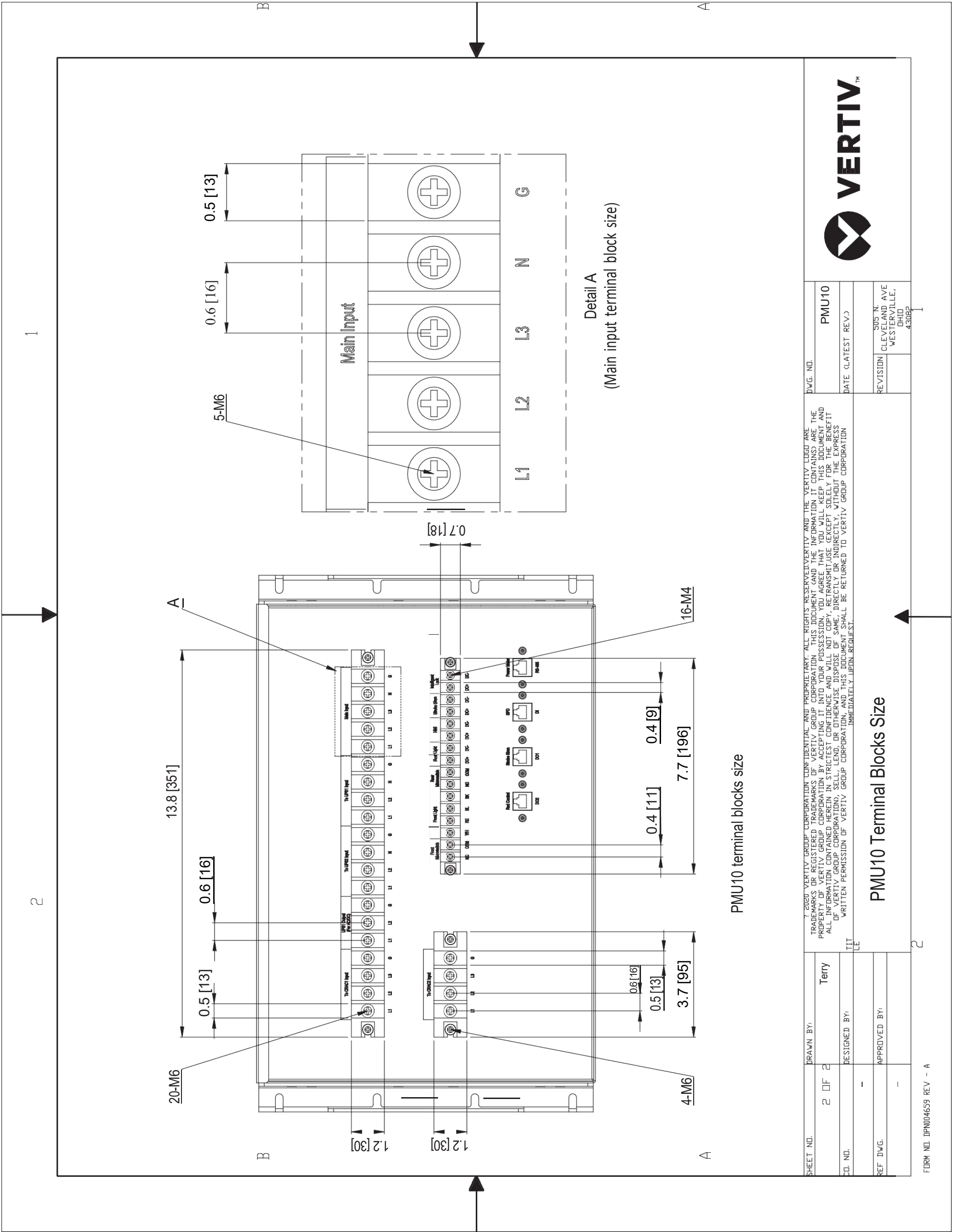


24/35



[illegible]

10. PMU10 Terminal Blocks Size



© 2020 VERTIV GROUP CORPORATION. CONFIDENTIAL AND PROPRIETARY. ALL RIGHTS RESERVED. VERTIV AND THE VERTIV LOGO ARE TRADEMARKS OR REGISTERED TRADEMARKS OF VERTIV GROUP CORPORATION. THIS DOCUMENT CONTAINS INFORMATION THAT IS THE PROPERTY OF VERTIV GROUP CORPORATION. BY ACCEPTING YOUR PERMISSION TO ACCESS THIS DOCUMENT, YOU AGREE TO KEEP THIS DOCUMENT AND ALL INFORMATION CONTAINED HEREIN IN STRICTEST CONFIDENCE AND WILL NOT COPY, REPRODUCE, TRANSMIT, OR OTHERWISE DISCLOSE THE BENEFIT OF VERTIV GROUP CORPORATION. VERTIV GROUP CORPORATION, SELLER, LENDER, OR OTHERWISE DISPOSE OF SAME, DIRECTLY OR INDIRECTLY, WITHOUT THE EXPRESS WRITTEN PERMISSION OF VERTIV GROUP CORPORATION. AND THIS DOCUMENT SHALL BE RETURNED TO VERTIV GROUP CORPORATION IMMEDIATELY UPON REQUEST.

SHEET NO.	DRAWN BY:
2 OF 2	Terry
CD. NO.	DESIGNED BY:
REF. DWG.	APPROVED BY:

2

1

2

1

Net weight: 13.2 lb [6 kg]
Shipping weight: 18.7 lb [8.5 kg]

8"R0.1 [R3.5]
0.1 [3.0]

9.3 [235.5]
23.3 [591.0]
9.3 [235.5]
10.5 [267.0]

14.2 [360.0]
23.6 [599.0]

Captive screws
2" Cable hole for
grounding cable to cabinet

9.4 [240.0]
8.7 [221.0]
5.1 [130.0]
0.4 [10.0]
9.4 [239.0]

Cable Tray Cover
Upper Channel through Weak Current Cable
Visible Window
Bottom Channel through Strong Electricity Cable
Ground Point

7 2020 VERTIV GROUP CORPORATION CONFIDENTIAL AND PROPRIETARY. ALL RIGHTS RESERVED. VERTIV AND THE VERTIV LOGO ARE TRADEMARKS OR REGISTERED TRADEMARKS OF VERTIV GROUP CORPORATION. THIS DOCUMENT (AND THE INFORMATION IT CONTAINS) ARE THE PROPERTY OF VERTIV GROUP CORPORATION. IT IS TO BE USED ONLY FOR THE PURPOSES SPECIFIED HEREIN. IT IS NOT TO BE REPRODUCED, COPIED, OR TRANSMITTED IN ANY FORM OR BY ANY MEANS, ELECTRONIC OR MECHANICAL, INCLUDING PHOTOCOPYING, RECORDING, OR BY ANY INFORMATION STORAGE AND RETRIEVAL SYSTEM, WITHOUT THE EXPRESS WRITTEN PERMISSION OF VERTIV GROUP CORPORATION. ALL INFORMATION CONTAINED HEREIN IS STRICTLY CONFIDENTIAL AND NOT TO BE DISCLOSED TO ANY OTHER PARTY WITHOUT THE EXPRESS WRITTEN PERMISSION OF VERTIV GROUP CORPORATION. THIS DOCUMENT SHALL BE RETURNED TO VERTIV GROUP CORPORATION IMMEDIATELY UPON REQUEST.

CT600 Cable Tray 600mm

SHEET NO.	DRAWN BY:	DWG. NO.
1 OF 1	Terry	MSR2-CT600
CD. NO.	DESIGNED BY:	DATE (LATEST REV.)
-	APPROVED BY:	REVISION
-		SUS N CLEVELAND AVE WESTERVILLE, OHIO 43082

FORM NO. DPN004659 REV - A

12. SCOPE OF WORK

SMART ROW 2 – ASSEMBLY & START-UP

SERVICE SUMMARY

Feature	Detail
On-site Service	One site trip within the 48 contiguous states to start-up the system. Visit to be scheduled by the customer between 8am-5pm, Monday-Friday (excluding national holidays).
Customer Support	Includes access to the Customer Resolution Center (1-800-543-2378) and the Vertiv Customer Services Network Online Internet portal for extent of product warranty.
Consolidation	The SmartRow2 includes numerous shippable units (typically pallets or boxes) that originate from multiple factories and suppliers. Vertiv consolidates these items into a single customer shipment and reduces the likelihood of shippable units being lost at the customer site. This benefits the customer by relieving the burden of keeping track of multiple partial shipments.
Inside Delivery	Vertiv Service will move the shippable units from the delivery truck to the Staging Area. Vertiv Services will unpackage the shippable units and remove/dispose of the packaging material so that it is ready for assembly. Vertiv will verify that all material on the sales order has been received.
Project Management	Included with Consolidation and Inside Delivery. Vertiv will assign a project manager for the project. The Project Manager will supervise the Consolidation and Inside Delivery Process and communicate hardware shipment schedules with the customer.
Assembly	SmartRow2 is assembled onsite by Vertiv factory-trained and authorized technicians equipped with Vertiv. Proprietary tools and software. Vertiv CEs and Vertiv Partners are the only approved OEM service providers for Vertiv products. These technicians are supervised by a Site Manager who also gathers site- specific requirements like safety and work procedures.
Factory Startup	Warranty inspection and startup validates the warranty and initializes the warranty coverage period.

SERVICE PERFORMED

Consolidated Shipment

Shippable units may be available at time of order or built-to-order with a lead time. Vertiv safely stores these items in-warehouse until the customer is ready to receive the SmartRow2 in a single shipment. Other limits may apply; see Assumption and Clarifications as applicable for more details.

Inside Delivery

Vertiv Services will deliver the shippable units from the delivery truck to the Staging Area. Vertiv Services will unpackage the shippable units and remove/dispose of the packaging material so that it is ready for assembly. Vertiv will verify that all material has been received.

Change order option:

- There must be an appropriate loading dock with continuous, level floor from the dock to the staging area. If the shippable units must be moved up/downstairs, the customer must provide a suitable elevator, or charges for special rigging will be incurred. If the customer does not have an appropriate loading dock, nominal charges may/ may-not apply for a lift-truck delivery.

Project Management

Vertiv will assign a project manager and a site manager for the project.
The Project Manager will supervise the Consolidation and Inside Delivery Process and communicate schedules with the customer.
The Site Manager will supervise the assembly, startup, warranty inspection and turn over the SmartRow2 to the customer.

Site-Specific Requirements

All personnel will be available for up to two hours per week for Site Access, Safety Training, and other site-specific requirements.

Change Order Option:

- Vertiv can quote a price for additional man-hours if 2 hours per week is insufficient.

Assembly

There shall be continuous, level floor between the Staging Area and the Installation Location so that heavy items can be moved via casters/pallet jacks.

Change Order Option:

- If there is not continuous level floor, the customer must provide or pay for any necessary lift/rigging equipment.

Vertiv PMC, including RDU501 SmartRow2 Controller/Display

Vertiv will position, level, and bay together the PMC as described in the submittal documents. The customer is responsible for providing primary electrical power to the PMC.

Vertiv will program and configure the SmartRow2 RDU501 controller/display. This includes setting IP addresses so that the customer can monitor the system status remotely.

Change Order Option:

- Vertiv will quote IP addressing of equipment on the customer network, but this would be done by other personnel and scheduled separately. This is outside the scope of SmartRow2 assembly.

Vertiv IT Rack(s)

Vertiv will position, level, and bay together the Vertiv IT Racks as described in the submittal documents. Vertiv will not populate racks with customer IT gear, including blanking panels, servers, shelves, etc.

The customer must define addressing conventions (1,2,3,4, right-to-left or left-to-right) prior to start of work.

Cable Trays

Vertiv will install the SmartRow2 cable trays that are included with the SmartRow2 solution as described in the submittal documents.

Liebert® CRV's, Temperature Sensors, Modbus cables, and associated Plenums

Vertiv will position and level the Liebert® CRV and attach the associated plenums to provide cooling to the SmartRow2.

Vertiv will connect the necessary temperature sensors.

The customer is responsible for piping and primary power to the CRV along with connecting CANBus cable between the CRV and heat rejection. All specific requirements (such as piping traps and proper electrical grounding) for correct product installation are detailed in the product installation manual.

After the SmartRow2 is assembled and the Liebert® CRV is piped and powered by the customer in accordance with the product installation manual, Vertiv will perform a factory warranty inspection along with the rest of the SmartRow2.

Liebert® MC / CCD Condensers for Liebert® CRVs

The customer is responsible for installing the associated heat rejection. This includes primary power, CANBus communication wire, piping, refrigerant charging, and all other tasks in the Installation Manual. Any/all penetration points in the walls/ceilings/floors for any wiring or piping are also the customer's responsibility.

Rack PDUs

Vertiv will install and connect all rack PDUs (if applicable) including GXT5 power extensions (if applicable) as described in the submittal documents.

Liebert® GXT5 Single Phase UPS

Vertiv will install and connect all Liebert® GXT5 UPS's and connect power within the PMC cabinet and output to the PDUs as described in the submittal documents.

Additionally, Vertiv will install ancillary equipment such as Maintenance bypass and PD2-103 cabling and connectors if not already preinstalled.

After the SmartRow2 is assembled and Primary Power to the SmartRow2 is provided by the customer, Vertiv will perform factory startup of all GXT5 equipment along with the rest of the SmartRow2.

Switch

Vertiv will install and connect the switch within the PMC cabinet. as described in the submittal documents.

Firmware Updates

Vertiv will update firmware of any/all units to the current revision level. Shippable units are sourced globally, and firmware evolves as products may be in stock with prior revisions.

Wiring

Vertiv will run all necessary wiring for power and communication between cabinets as part of assembly. This includes setting IP/DIP switch settings for proper communication between the device and the PMC.

Accessories

The SmartRow2 is available with lights, door locks/sensors, temperature sensors that Vertiv will connect and install. Services associated with cameras are sold separately and out-of-scope for the SmartRow2 Assembly

RDU Monitor SmartRow2 mobile application.

Services associated with the RDU Monitor SmartRow2 mobile applications are quoted separately and out-of-scope for SmartRow2 assembly.

Fire Suppression Cabinet Assembly (if Applicable)

Vertiv will unpackage the Fire Suppression cabinet so that it is ready for installation.

Position level and bolt together the Fire Suppression cabinet to the adjoining cabinets.

Ensure all the wirings are connected, according to the information available in the submittal documents.

Install the piping in all the other cabinets in accordance with system drawings.

CUSTOMER RESPONSIBILITIES

In order to provide timely, accurate and thorough execution of the services described herein, Vertiv requests the following:

- Point of Contact: Provide an authorized point of contact(s), specific for the scope of work, for scheduling and coordination purposes.
- Scheduling: Make dates available for scheduling service. All visits must be requested 4 weeks in advance for assembly and 10 days for startup/warranty-inspection of need by contacting the Vertiv Project Manager. Site must be available for 5 consecutive business days. Customer may choose to pay for premium time if weekend work is necessary.
- Site Access: Prior to time of scheduled work, provide site access including any customer required escort, security clearance, safety training and badging for Vertiv personnel.
- Equipment Access: Convenient access to the equipment covered by the Scope of Work. Prior to scheduled time of work, notify Vertiv personnel of any special requirements for equipment access including lifts, ladders, etc.
- Shutdown: Service may require shutdown of load to ensure electrical connection integrity.
- Notification: If for any reason the work cannot be performed during scheduled time, notify Vertiv personnel 24-hours prior to scheduled event.
- Provide Method of Procedure (MOP) requirements/ templates, and required review period(s)

ASSUMPTIONS AND CLARIFICATIONS

- Vertiv will cover one month of storage costs as part of the consolidation service. If the original ship date is changed due to non-Vertiv delays, the customer is liable for any costs associated with the extended storage time.
- Vertiv start-up validates product warranty.
- Defects or damage resulting from installation not performed by Vertiv are not covered.
- Parts and Labor coverage is in accordance with Product Warranty. If a modified warranty is purchased, terms default to that specific package.
- Any customer site visit is limited to eight (8) hours per visit. Any time beyond forty (40) hours/wk or eight (8) hrs/day or additional Startup visits will be billed separately.
- Expenses incurred due to delays that are beyond the control of Vertiv may be billed at cost.
- Startup visit must be scheduled confirmation of proper installation (if Vertiv not involved with installation).
- This pricing excludes any load bank testing. This can also be quoted separately if required.
- Pricing excludes activities associated with 3rd party commissioning.
- Pricing excludes any type of circuit breaker NEMA testing. This can also be quoted separately if required.
- Customer/Installing contractor is responsible for providing elevated access as necessary.
- Any additional requests beyond the scope of this document will be billed separately by Vertiv.
- Vertiv will not perform physical changes to the site building (such as drilling holes, etc.)

TERMS AND CONDITIONS

Subject to all Terms & Conditions as noted in the Vertiv Terms & Conditions or the terms of a Master Agreement between the parties, if any, shall apply.

SCOPE OF WORK

SMART ROW 2 – FIRE SUPPRESSION

START-UP & OPTIONAL SERVICES

SERVICE SUMMARY

Feature	Detail
On-site Service	One site trip within the 48 contiguous states to start-up the system. Visit to be scheduled by the customer between 8am-5pm, Monday-Friday (excluding national holidays).
Service Professional	Performed by Vertiv factory-trained and authorized technician equipped with Vertiv Proprietary tools and software. Vertiv CEs and Vertiv Partners are the only approved OEM service providers for Vertiv products.
Permitting	Permits are the responsibility of the customer to see if one is required. Additional fees may apply and can vary based on the customer's location. (see Assumptions and Clarifications).
Optional services	Optional system integrity services can be requested by the customer as part of the startup and installation.

SERVICE PERFORMED

Fire Suppression Start-up:

1. Verify that 120V AC circuit has been ran to the fire suppression panel.
2. Verify all the items on the Fire Suppression readiness punch list have been completed and acknowledged.
3. Functionality test all input and output circuits for proper operation.
4. Complete the warranty inspection of the system.
5. Provide training to the customer on the operation of the Fire Suppression system.

Door Fan Test (if applicable):

1. Conduct a door fan test with the standardized Fan test system.
2. Measure the pressure retention rate and calculate the amount of air flowing through the Door fan.
3. Determine the total size of the air leaks (if any).
4. Provide the customer with the pressure test report.

Discharge Test (if applicable):

1. Replace the system cylinder with the Proinert test cylinder provided by the manufacturer.
2. Conduct a discharge test on the system.
3. Ensure that the oxygen level falls below 15% and maintains that level for a minimum of 10 minutes.
4. Place the system cylinder back into place and arm the system.
5. Provide the customer with a discharge test report.

CUSTOMER RESPONSIBILITIES

In order to provide timely, accurate and thorough execution of the services described herein, Vertiv requests the following:

- Point of Contact: Provide an authorized point of contact(s), specific for the scope of work, for scheduling and coordination purposes.
- Scheduling: Make dates available for scheduling service. All visits must be requested 10 business days in advance of need by contacting the Vertiv Customer Resolution Center at 1-800-543-2378.
- Site Access: Prior to time of scheduled work, provide site access including any customer required escort, security clearance, safety training and badging for Vertiv service personnel.
- Equipment Access: Convenient access to the equipment covered by the Scope of Work. Prior to scheduled time of work, notify Vertiv service personnel of any special requirements for equipment access including lifts, ladders, etc.
- Shutdown: Service may require shutdown of load to ensure electrical connection integrity.
- Notification: If for any reason the work cannot be performed during scheduled time, notify Vertiv service personnel 24-hours prior to scheduled event.

ASSUMPTIONS AND CLARIFICATIONS

- Assembly: The assembly of the Fire Suppression cabinet is included in the SmartRow2.
- Punch list: This document confirms system readiness and must be completed before startup. It is included in the submittal package.
- Permitting: The customer is responsible for any permits (if required), as it falls outside the original scope. While the process can be facilitated, the customer will be responsible for all permitting costs, including any optional services listed above.
- Maintenance: Per NFPA 2001, the FIKE Proinert IG-55 SHP Pro suppression system protecting the SmartRow2 shall be inspected on a semi-annual basis. These inspections are not only important in ensuring the included clean agent system is functionally operational but are necessary to qualify for any manufacturer warranties. Per the manufacturer's warranty guidelines, the equipment must be maintained on a semi-annual frequency by an authorized FIKE distributor commencing with the date of Startup.
- Optional Integrity testing: Manufacturer intends to provide both the integrity test services (Door fan test and Discharge test) at the customer's facility either directly or through a local Fike distributor. This pricing includes the necessary labor, equipment, and materials to complete this testing.
- Manufacturer does not guarantee a passing test after the system has been handed over to the customer and is not responsible for the patching and sealing of the enclosure if the cable and CRV penetrations have not been sealed.

TERMS AND CONDITIONS

Subject to all Terms & Conditions as noted in the Vertiv Terms & Conditions or the terms of a Master Agreement between the parties, if any, shall apply.



SmartRow 2

Scope of Work Checklist

Customer Name:

Project Name:

Project Number:

This document is to serve as a checklist to help identify and budget the various work activities involved with assembling and installing a SmartRow 2. It is the customers responsibility to ensure all tasks are assigned to partners which will result in a successful SmartRow 2 project.

Contact Vertiv for available local support resources to provide technical guidance as needed. Call 800 543-2378

The **X** indicates the responsible party for that task. Multiple **X**'s indicate shared responsibility.

This document is provided as a reference document and does not replace any product manuals or supporting documentation. Always read all product documentation before performing any work.

Customer (Name) *includes responsibility for Mechanical, Electrical, and/or General Contractors as needed :*

Project Management:

Assembly Team Lead:

Consolidator:

Vertiv Warranty Inspection Tech:

Vertiv Sales Rep (LVO):

	Customer	Local Vertiv Sales Rep	Project Management	Assembly Team	Consolidator / Inside Delivery	Flagship/FIKE Rep	Vertiv Warranty Inspection Tech	Tasks
1	Pre-Sale Activities							
1,01	X	X	<input type="checkbox"/>	<input type="checkbox"/>	<input type="checkbox"/>	<input type="checkbox"/>	<input type="checkbox"/>	Perform / arrange Site Visit to qualify deployment. Add any incremental site-specific Tasks in Section 6 of this checklist.
1,02	X	X	<input type="checkbox"/>	<input type="checkbox"/>	<input type="checkbox"/>	<input type="checkbox"/>	<input type="checkbox"/>	Assess whether the building has enough power available to support the SmartRow 2 and heat rejection.
1,03	X	X	<input type="checkbox"/>	<input type="checkbox"/>	<input type="checkbox"/>	<input type="checkbox"/>	<input type="checkbox"/>	Advise if a floor loading analysis should be conducted.
1,04	<input type="checkbox"/>	X	<input type="checkbox"/>	<input type="checkbox"/>	<input type="checkbox"/>	<input type="checkbox"/>	<input type="checkbox"/>	Ensure the customer understands and adheres to the minimum and maximum SmartRow 2 heat load and rack density limits.
1,05	X	X	<input type="checkbox"/>	<input type="checkbox"/>	<input type="checkbox"/>	<input type="checkbox"/>	<input type="checkbox"/>	Assess if a crane will be required to locate the heat rejection on a roof and plan accordingly.
1,06	X	X	<input type="checkbox"/>	<input type="checkbox"/>	<input type="checkbox"/>	<input type="checkbox"/>	<input type="checkbox"/>	If a freight elevator will be used, confirm adequate lifting capacity and dimensional clearances (PMC cabinet is typically the heaviest piece of equipment at 1998mm height, 1400mm depth, 600mm width and up to 1,600 lb weight.)
2	Post Sale, Equipment Pre-Delivery Activities							
2,01	<input type="checkbox"/>	X	<input type="checkbox"/>	<input type="checkbox"/>	<input type="checkbox"/>	<input type="checkbox"/>	<input type="checkbox"/>	Ensure every task in this Trade SOW Guide is assigned to at least one responsible party (Marked by X). This guide is specific to the SmartRow 2.
2,02	<input type="checkbox"/>	X	<input type="checkbox"/>	<input type="checkbox"/>	<input type="checkbox"/>	<input type="checkbox"/>	<input type="checkbox"/>	Send a completed copy of this document to all involved parties.
2,03	<input type="checkbox"/>	X	X	<input type="checkbox"/>	<input type="checkbox"/>	<input type="checkbox"/>	<input type="checkbox"/>	Ensure all trades receive a current and accurate manual and set of submittals.
2,04	<input type="checkbox"/>	X	<input type="checkbox"/>	<input type="checkbox"/>	<input type="checkbox"/>	<input type="checkbox"/>	<input type="checkbox"/>	Acknowledge all tasks listed in the Trade SOW Checklist are completed by all the responsible parties.
2,05	X	X	<input type="checkbox"/>	<input type="checkbox"/>	<input type="checkbox"/>	<input type="checkbox"/>	<input type="checkbox"/>	Verify whether permits are necessary for the installation of the Fire Suppression System.
2,06	X	X	X	<input type="checkbox"/>	<input type="checkbox"/>	<input type="checkbox"/>	<input type="checkbox"/>	Asses whether the customer requires any onsite system integrity tests as part of the Fire suppression System Startup activity.
2,07	X	X	<input type="checkbox"/>	<input type="checkbox"/>	<input type="checkbox"/>	<input type="checkbox"/>	<input type="checkbox"/>	Complete SmartRow 2 Delivery Service (Inside Delivery) checklist and return to factory within 10 days of PO receipt (Document MBFM 7160-10 in submittal packet).
2,08	X	X	<input type="checkbox"/>	<input type="checkbox"/>	<input type="checkbox"/>	<input type="checkbox"/>	<input type="checkbox"/>	Ensure indoor space meets all SmartRow 2 requirements (see SmartRow 2 manual); identify any issues and resolve: <ul style="list-style-type: none"> (1) Floor surface must be level and continuous (expansion joints sealed, raised floor tile gaps sealed, no floor drains, etc). (2) Mezzanine/roof can support outdoor heat rejection (if applicable) (3) Adequate service, egress and electrical clearances (see submittal packet) (4) Room containing SmartRow 2 maintained year-round within 0°C – 40°C. (5) The room and floor must be clean and free of debris. (6) Ensure there is at least 24 inches clearance above the rack top plates (7) Ensure no part of the SmartRow 2 will be closer than 18 inches to a sprinkler head (per NFPA 13)
2,09	X	X	<input type="checkbox"/>	<input type="checkbox"/>	<input type="checkbox"/>	<input type="checkbox"/>	<input type="checkbox"/>	Make sure condenser is within 300 equivalent feet (see cooling equipment manuals for calculation guidance).Outdoor Condenser Installation. Follow Installer/User Guide. <ul style="list-style-type: none"> (1) Condenser is bolted, mounted and leveled (2) Provide and install (2) low voltage twisted pair wires between each indoor cooling unit and outdoor heat rejection (condenser / drycooler) for CANbus communication and dry contact closure. (3) This includes qty (3) vacuum pulls of the refrigerant lines (oil must be changed in the vacuum pump between each pull, and readings should be 250 microns or less. Provide picture with date/time to confirm) (4) Refrigerant lines charged with freon (5) The outdoor piping are wrapped in aluminum and braced
2,10	X	X	<input type="checkbox"/>	<input type="checkbox"/>	<input type="checkbox"/>	X	X	Confirm that the nearest drain for condensate is within the cooling unit's pump head limitations (see cooling equipment manuals).
2,11	X	X	<input type="checkbox"/>	<input type="checkbox"/>	<input type="checkbox"/>	<input type="checkbox"/>	<input type="checkbox"/>	Provide and install utility over-current protection and circuit for each outdoor condenser/drycooler when applicable.
2,12	X	X	<input type="checkbox"/>	<input type="checkbox"/>	<input type="checkbox"/>	<input type="checkbox"/>	<input type="checkbox"/>	Provide and install utility over-current protection and circuit for main input row connection in PMC.
2,13	X	X	X	<input type="checkbox"/>	<input type="checkbox"/>	<input type="checkbox"/>	<input type="checkbox"/>	Schedule delivery. If new construction, installation is recommended before office furniture is installed but after building construction is completed. Permanent, continuous power must be available.
2,14	<input type="checkbox"/>	X	X	<input type="checkbox"/>	<input type="checkbox"/>	<input type="checkbox"/>	<input type="checkbox"/>	Schedule Vertiv Cooling System Warranty Inspection.
2,15	<input type="checkbox"/>	X	X	<input type="checkbox"/>	<input type="checkbox"/>	<input type="checkbox"/>	<input type="checkbox"/>	Schedule Vertiv UPS System Warranty Inspection.

3	SmartRow 2 Assembly							
3,01	<input type="checkbox"/>	<input type="checkbox"/>	<input type="checkbox"/>	<input type="checkbox"/>	X	<input type="checkbox"/>	<input type="checkbox"/>	Receive shipment(s).
3,02	<input type="checkbox"/>	<input type="checkbox"/>	<input type="checkbox"/>	<input type="checkbox"/>	X	<input type="checkbox"/>	<input type="checkbox"/>	Bring equipment from truck into room, unpackage and remove debris (included with SmartRow 2 Delivery Service).
3,03	<input type="checkbox"/>	<input type="checkbox"/>	<input type="checkbox"/>	<input type="checkbox"/>	X	<input type="checkbox"/>	<input type="checkbox"/>	Review equipment for shipping damage (recommended the same party who receives the equipment).
3,04	<input type="checkbox"/>	<input type="checkbox"/>	<input type="checkbox"/>	X	<input type="checkbox"/>	<input type="checkbox"/>	<input type="checkbox"/>	Assemble, gasket and level PMC unit per submittal package.
3,05	<input type="checkbox"/>	<input type="checkbox"/>	<input type="checkbox"/>	X	<input type="checkbox"/>	<input type="checkbox"/>	<input type="checkbox"/>	Assemble, gasket and level indoor cooling unit(s) per submittal package.
3,06	<input type="checkbox"/>	<input type="checkbox"/>	<input type="checkbox"/>	X	<input type="checkbox"/>	<input type="checkbox"/>	<input type="checkbox"/>	Assemble, gasket and level racks per submittal package.
3,07	<input type="checkbox"/>	<input type="checkbox"/>	<input type="checkbox"/>	X	<input type="checkbox"/>	<input type="checkbox"/>	<input type="checkbox"/>	Assemble and attach rubber cable grommets.
3,08	<input type="checkbox"/>	<input type="checkbox"/>	<input type="checkbox"/>	X	<input type="checkbox"/>	<input type="checkbox"/>	<input type="checkbox"/>	Connect door switch wire and rack lighting wire harnesses.
3,09	<input type="checkbox"/>	<input type="checkbox"/>	<input type="checkbox"/>	X	<input type="checkbox"/>	<input type="checkbox"/>	<input type="checkbox"/>	Install cable troughs on top of equipment.
3,10	<input type="checkbox"/>	<input type="checkbox"/>	<input type="checkbox"/>	X	<input type="checkbox"/>	<input type="checkbox"/>	<input type="checkbox"/>	Neatly connect and route CANbus communication cables and address rack temperature 2T-sensors (set dip switches).
3,11	<input type="checkbox"/>	<input type="checkbox"/>	<input type="checkbox"/>	X	<input type="checkbox"/>	<input type="checkbox"/>	<input type="checkbox"/>	Neatly route the rack temperature 2T temperature probes into position in front of EIA rails.
3,12	<input type="checkbox"/>	<input type="checkbox"/>	<input type="checkbox"/>	X	<input type="checkbox"/>	<input type="checkbox"/>	<input type="checkbox"/>	Neatly route and connect all Ethernet cables between SmartRow 2 Network vNSA switch, and all UPS and cooling unit Unity monitoring cards, primary rack-PDU RPC2 monitoring cards, and cooling unit teamwork connections.
3,13	<input type="checkbox"/>	<input type="checkbox"/>	<input type="checkbox"/>	X	<input type="checkbox"/>	<input type="checkbox"/>	<input type="checkbox"/>	Neatly route and connect all rack-PDU array Ethernet cables.
4	SmartRow 2 Installation including the Fire Suppression System							
4,01	<input type="checkbox"/>	<input type="checkbox"/>	<input type="checkbox"/>	X	<input type="checkbox"/>	<input type="checkbox"/>	<input type="checkbox"/>	Install PMC to MBC (20KVA) or PMC to UPS (10KVA) interconnect cabling (cables provided with SmartRow 2)
4,02	<input type="checkbox"/>	<input type="checkbox"/>	<input type="checkbox"/>	X	<input type="checkbox"/>	<input type="checkbox"/>	<input type="checkbox"/>	Install UPS to MBC (20KVA) interconnect cabling (cables provided with SmartRow 2) or Mount POD (Included in SmartRow 2) on UPS (10KVA).
4,03	<input type="checkbox"/>	<input type="checkbox"/>	<input type="checkbox"/>	<input type="checkbox"/>	<input type="checkbox"/>	<input type="checkbox"/>	X	Connect low voltage wires to indoor cooling unit and outdoor heat rejection.
4,04	X	<input type="checkbox"/>	<input type="checkbox"/>	<input type="checkbox"/>	<input type="checkbox"/>	<input type="checkbox"/>	<input type="checkbox"/>	Provide and connect condensate drain line to each indoor cooling unit.
4,05	X	<input type="checkbox"/>	<input type="checkbox"/>	<input type="checkbox"/>	<input type="checkbox"/>	<input type="checkbox"/>	<input type="checkbox"/>	Connect utility high voltage building feed to main input in PMC.
4,06	X	<input type="checkbox"/>	X	<input type="checkbox"/>	<input type="checkbox"/>	<input type="checkbox"/>	<input type="checkbox"/>	Ensure the handover document is completed and acknowledged by all responsible parties if startup activities are scheduled at different times.
5	SmartRow 2 Startup							
5,01	<input type="checkbox"/>	<input type="checkbox"/>	<input type="checkbox"/>	X	<input type="checkbox"/>	<input type="checkbox"/>	<input type="checkbox"/>	Ensure all rubber cable grommets are installed
5,02	<input type="checkbox"/>	<input type="checkbox"/>	<input type="checkbox"/>	<input type="checkbox"/>	<input type="checkbox"/>	<input type="checkbox"/>	X	Cooling system Warranty Inspection.
5,03	<input type="checkbox"/>	<input type="checkbox"/>	<input type="checkbox"/>	<input type="checkbox"/>	<input type="checkbox"/>	<input type="checkbox"/>	X	UPS system Warranty Inspection.
5,04	<input type="checkbox"/>	<input type="checkbox"/>	<input type="checkbox"/>	<input type="checkbox"/>	<input type="checkbox"/>	<input type="checkbox"/>	X	Configure RDU501 Controller
5,05	<input type="checkbox"/>	<input type="checkbox"/>	<input type="checkbox"/>	X	<input type="checkbox"/>	<input type="checkbox"/>	<input type="checkbox"/>	Close breakers on rack-PDUs.
5,06	<input type="checkbox"/>	<input type="checkbox"/>	<input type="checkbox"/>	X	<input type="checkbox"/>	<input type="checkbox"/>	<input type="checkbox"/>	Perform final SmartRow 2 functional test (Door switches, backup fans, HMI).
5,07	<input type="checkbox"/>	<input type="checkbox"/>	<input type="checkbox"/>	X	<input type="checkbox"/>	<input type="checkbox"/>	<input type="checkbox"/>	Clean entire SmartRow 2, inside and outside. When cleaning see-through Plexiglas doors follow instructions in manual to avoid scratching.
5,08	<input type="checkbox"/>	<input type="checkbox"/>	<input type="checkbox"/>	X	<input type="checkbox"/>	<input type="checkbox"/>	<input type="checkbox"/>	Ensure the SmartRow 2 Startup Form has been completed.
6	Fire Suppression System Start up							
6,01	X	X	<input type="checkbox"/>	X	<input type="checkbox"/>	X	<input type="checkbox"/>	Ensure all the required parties are present on site for the installation of the Fire Suppression System.
6,02	<input type="checkbox"/>	<input type="checkbox"/>	<input type="checkbox"/>	X	<input type="checkbox"/>	<input type="checkbox"/>	<input type="checkbox"/>	Position, level and bolt together the Fire suppression cabinet to the rest of the row.
6,03	<input type="checkbox"/>	<input type="checkbox"/>	<input type="checkbox"/>	X	<input type="checkbox"/>	<input type="checkbox"/>	<input type="checkbox"/>	Ensure all the wiring is connected, according to the information available in the submittals.
6,04	<input type="checkbox"/>	<input type="checkbox"/>	<input type="checkbox"/>	X	<input type="checkbox"/>	<input type="checkbox"/>	<input type="checkbox"/>	Install the piping in all the other cabinets.
6,05	X	X	<input type="checkbox"/>	<input type="checkbox"/>	<input type="checkbox"/>	X	<input type="checkbox"/>	Ensure the Punch list items are completed and signed by the responsible parties.
6,06	X	X	<input type="checkbox"/>	<input type="checkbox"/>	<input type="checkbox"/>	X	<input type="checkbox"/>	Review the closeout document with the information about the pre-test conducted at Flagship.
6,07	<input type="checkbox"/>	<input type="checkbox"/>	<input type="checkbox"/>	<input type="checkbox"/>	<input type="checkbox"/>	X	<input type="checkbox"/>	Validate the warranty of the Fire supression system.
6,08	<input type="checkbox"/>	<input type="checkbox"/>	<input type="checkbox"/>	<input type="checkbox"/>	<input type="checkbox"/>	X	<input type="checkbox"/>	Verify that all components are functioning as intended.
6,09	X	<input type="checkbox"/>	<input type="checkbox"/>	<input type="checkbox"/>	<input type="checkbox"/>	X	<input type="checkbox"/>	Provide training to the customer on the system.
7	Optional - Fire Suppression System Integrity Test (upon customer request)							
7,01	<input type="checkbox"/>	<input type="checkbox"/>	<input type="checkbox"/>	<input type="checkbox"/>	<input type="checkbox"/>	X	<input type="checkbox"/>	Conduct a door fan test with the standardized Fan test system.
7,02	<input type="checkbox"/>	<input type="checkbox"/>	<input type="checkbox"/>	<input type="checkbox"/>	<input type="checkbox"/>	X	<input type="checkbox"/>	Measure the pressure retention rate and calculate the amount of air flowing through the Door fan.
7,03	<input type="checkbox"/>	<input type="checkbox"/>	<input type="checkbox"/>	<input type="checkbox"/>	<input type="checkbox"/>	X	<input type="checkbox"/>	Determine the total size of the air leaks.
7,04	<input type="checkbox"/>	<input type="checkbox"/>	<input type="checkbox"/>	<input type="checkbox"/>	<input type="checkbox"/>	X	<input type="checkbox"/>	Provide the customer with the pressure test report.
7,05	<input type="checkbox"/>	<input type="checkbox"/>	<input type="checkbox"/>	<input type="checkbox"/>	<input type="checkbox"/>	X	<input type="checkbox"/>	Replace the system cylinder with the Proinert test cylinder provided by the manufacturer.
7,06	<input type="checkbox"/>	<input type="checkbox"/>	<input type="checkbox"/>	<input type="checkbox"/>	<input type="checkbox"/>	X	<input type="checkbox"/>	Conduct a discharge test on the system.
7,07	<input type="checkbox"/>	<input type="checkbox"/>	<input type="checkbox"/>	<input type="checkbox"/>	<input type="checkbox"/>	X	<input type="checkbox"/>	Ensure that the oxygen level falls below 15% and maintains that level for a minimum of 10 minutes.
7,08	<input type="checkbox"/>	<input type="checkbox"/>	<input type="checkbox"/>	<input type="checkbox"/>	<input type="checkbox"/>	X	<input type="checkbox"/>	Place the system cylinder back into place and arm the system.
7,09	<input type="checkbox"/>	<input type="checkbox"/>	<input type="checkbox"/>	<input type="checkbox"/>	<input type="checkbox"/>	X	<input type="checkbox"/>	Provide the customer with a discharge test report.