

Vertiv™ BBE FDH Series

PLC Splitter Modules



Key Features

- Pre-terminated SC/APC pigtails
- Low insertion loss
- Low polarization dependent loss
- High port uniformity
- 2 mm pigtail
- Snap-in module requires no tools
- Pre-parked in 16-fiber modules
- Bend insensitive fiber has 15 mm bend radius
- Telcordia GR-1209-CORE and GR-1221-CORE certified

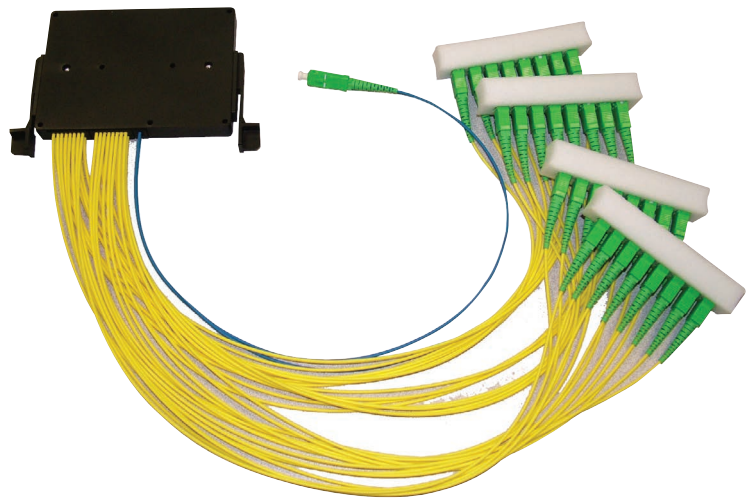
The Vertiv™ BBE FDH Series PLC Splitter Modules are for centralized splitting of fiber on PON FTTx architectures.

Description

The Vertiv line of fiber enclosures can be equipped with high performance Planer Lightwave Circuit (PLC) splitter modules that utilize bend insensitive fiber, terminated with SC APC connectors. Our PLC splitters are available in 1 x 16 or 1 x 32 configurations. These splitters passed Telcordia GR-1209-CORE and GR-1221-CORE specifications.

Application

PLC Splitter Modules from Vertiv are ideal for centralized splitting of fiber in Passive Optical Network (PON) FTTx architectures. These splitters are designed for use in Vertiv BBE FDH cabinets and pedestals.



Vertiv BBE FDH Series PLC Splitter Module
(1 x 32 SC APC)

Technical Specifications

	1 x 16	1x32
Operating Wavelength	1280 nm to 1650 nm	1280 nm to 1650 nm
Insertion Loss (includes loss from connectors)	14.0 dB (max.) 12.9 dB (typ.)	17.5 dB (max.) 16.6 dB (typ.)
Uniformity	< 1.50 dB	< 1.50 dB
Return Loss	> 55 dB	> 55 dB
Directivity	> 60 dB	> 60 dB
PDL (max.)	< 0.30 dB	< 0.30 dB
Operating Temperature	-40 °C to 85 °C	-40 °C to 85 °C

Ordering Information

Catalog Number	Part Number	Description
NSSPLT132AD	F1008495	1x32 splitter for PRO10 Vertiv BBE FDH Compact Series, SC APC
NSSPLT116AE	F1009027	1x16 splitter for PRO10 Vertiv BBE FDH Compact Series, SC APC