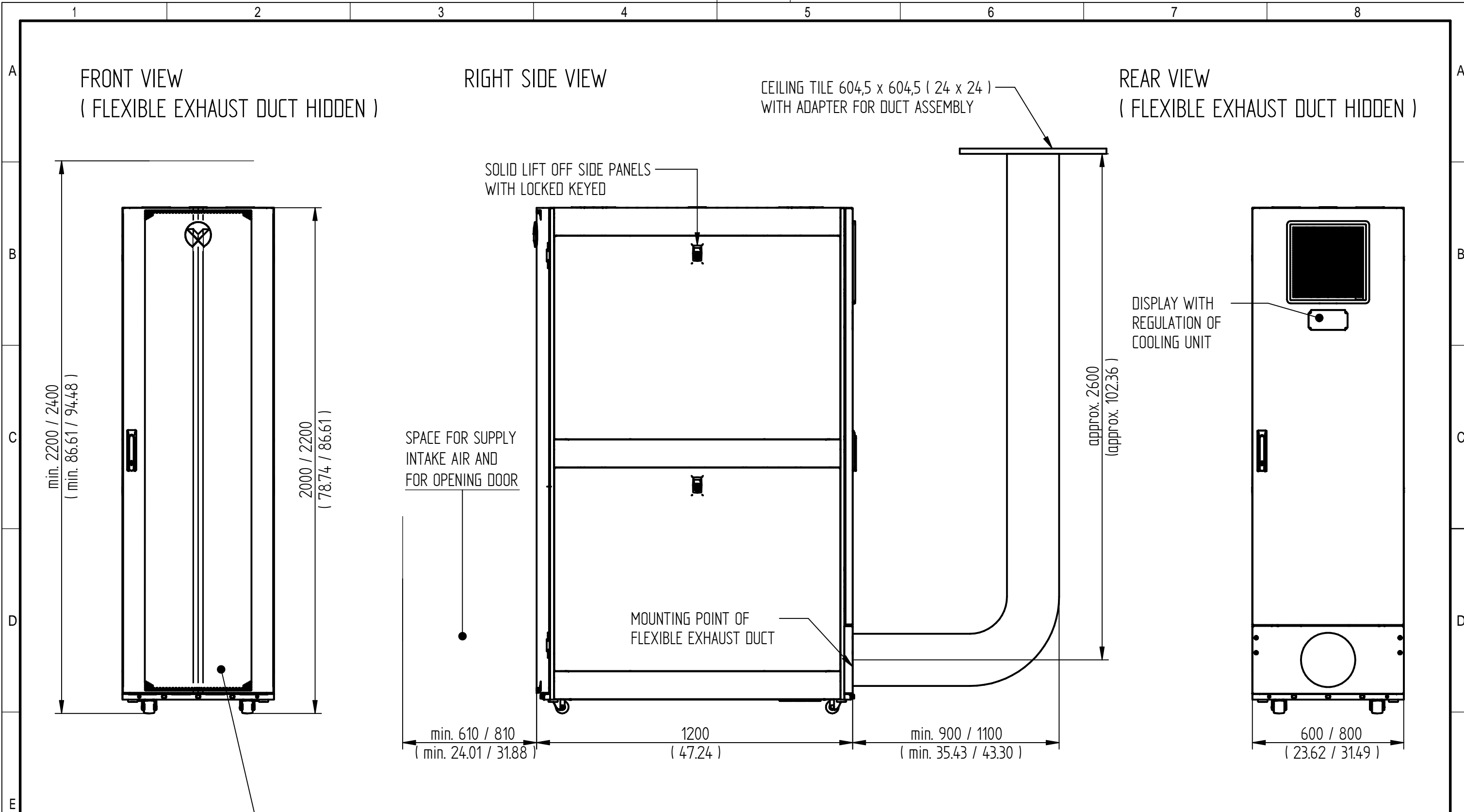


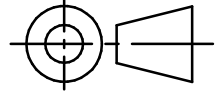
Disclosure and photocopying of this document, exploitation and communication of its contents are not permitted, unless permission is expressly granted. All rights are reserved.

Weitergabe sowie Vervielfältigung dieser Unterlage, Verwertung und Mitteilung ihres Inhalts nicht gestattet, soweit nicht ausdrücklich zugestanden. Alle Rechte vorbehalten.



PERFORATED AREA COVERED BY PARTS OF CLOSING KIT (DOOR COVER AND DOOR COVER BOTTOM)

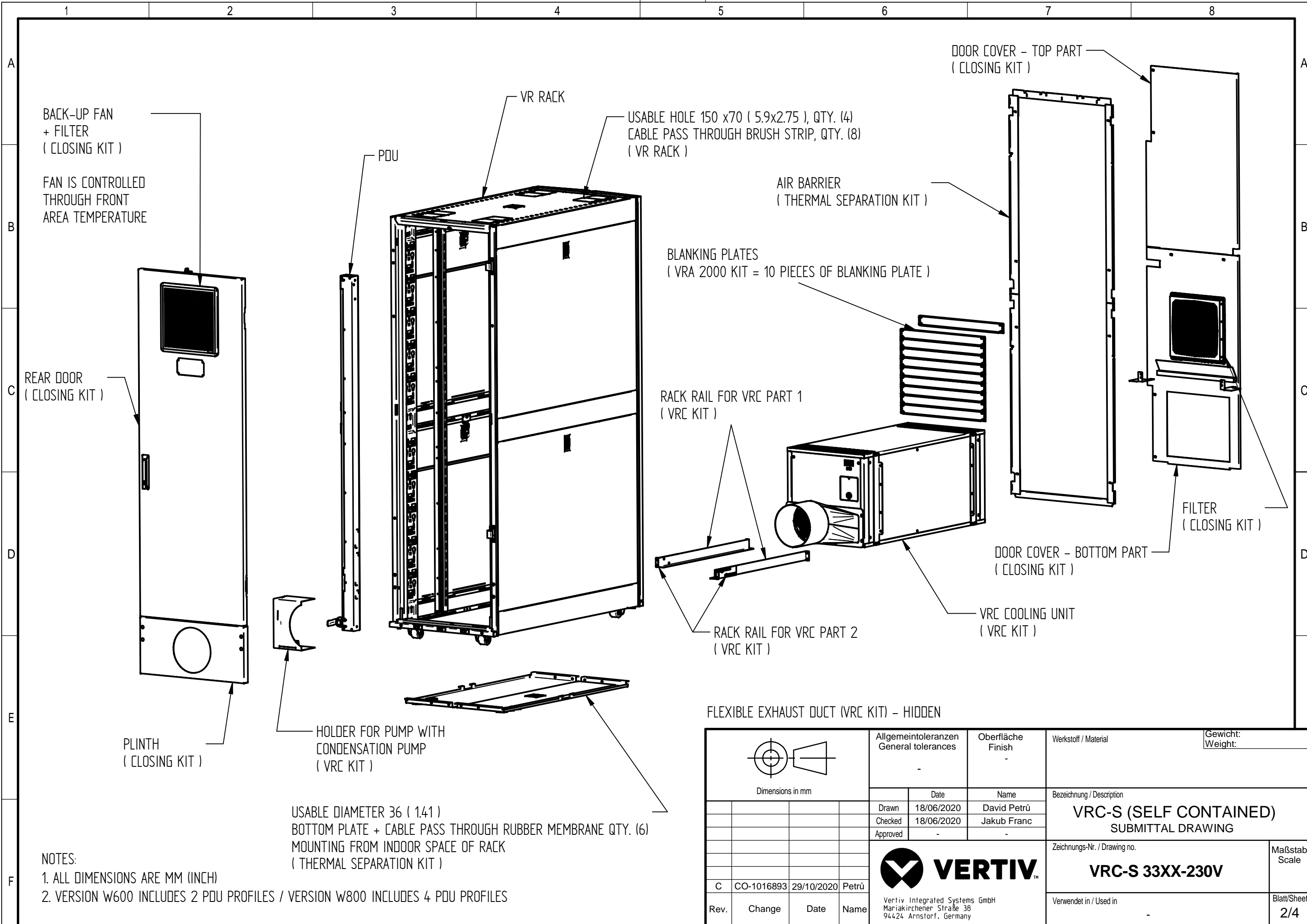
- NOTES:
1. ALL DIMENSIONS ARE MM (INCH)
 2. VERSION W600 INCLUDES 2 PDU PROFILES / VERSION W800 INCLUDES 4 PDU PROFILES

 Dimensions in mm	Allgemeintoleranzen General tolerances		Oberfläche Finish	Werkstoff / Material		Gewicht: Weight:
	-		-			
	Drawn	18/06/2020	Name	Bezeichnung / Description		
	Checked	18/06/2020	Jakub Franc	VRC-S (SELF CONTAINED)		
	Approved	-	-	SUBMITTAL DRAWING		
				Zeichnungs-Nr. / Drawing no.		Maßstab Scale
				VRC-S 33XX-230V		
				Verwendet in / Used in		Blatt/Sheet
						1/4



Disclosure and photocopying of this document, exploitation and communication of its contents are not permitted, unless permission is expressly granted. All rights are reserved.

Weitergabe sowie Vervielfältigung dieser Unterlage, Verwertung und Mitteilung ihres Inhalts nicht gestattet, soweit nicht ausdrücklich zugestanden. Alle Rechte vorbehalten.



BACK-UP FAN + FILTER (CLOSING KIT)
 FAN IS CONTROLLED THROUGH FRONT AREA TEMPERATURE

USABLE HOLE 150 x70 (5.9x2.75), QTY. (4)
 CABLE PASS THROUGH BRUSH STRIP, QTY. (8) (VR RACK)

AIR BARRIER (THERMAL SEPARATION KIT)

BLANKING PLATES (VRA 2000 KIT = 10 PIECES OF BLANKING PLATE)

RACK RAIL FOR VRC PART 1 (VRC KIT)

RACK RAIL FOR VRC PART 2 (VRC KIT)

DOOR COVER - TOP PART (CLOSING KIT)

DOOR COVER - BOTTOM PART (CLOSING KIT)

FILTER (CLOSING KIT)

VRC COOLING UNIT (VRC KIT)

PLINTH (CLOSING KIT)

HOLDER FOR PUMP WITH CONDENSATION PUMP (VRC KIT)

USABLE DIAMETER 36 (1.41)
 BOTTOM PLATE + CABLE PASS THROUGH RUBBER MEMBRANE QTY. (6)
 MOUNTING FROM INDOOR SPACE OF RACK (THERMAL SEPARATION KIT)

NOTES:
 1. ALL DIMENSIONS ARE MM (INCH)
 2. VERSION W600 INCLUDES 2 PDU PROFILES / VERSION W800 INCLUDES 4 PDU PROFILES

FLEXIBLE EXHAUST DUCT (VRC KIT) - HIDDEN

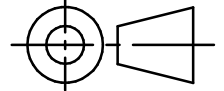

<p>Dimensions in mm</p>	Allgemeintoleranzen General tolerances		Oberfläche Finish		Werkstoff / Material		Gewicht: Weight:		
	-		-						
		Drawn	18/06/2020	Name		Bezeichnung / Description			
		Checked	18/06/2020	David Petru		VRC-S (SELF CONTAINED)			
		Approved	-	Jakub Franc		SUBMITTAL DRAWING			
						Zeichnungs-Nr. / Drawing no.		Maßstab Scale	
						VRC-S 33XX-230V			
						Verwendet in / Used in		Blatt/Sheet 2/4	

Disclosure and photocopying of this document, exploitation and communication of its contents are not permitted, unless permission is expressly granted. All rights are reserved.

Weitergabe sowie Vervielfältigung dieser Unterlage, Verwendung und Mitteilung ihres Inhalts nicht gestattet, soweit nicht ausdrücklich zugestanden. Alle Rechte vorbehalten.

VRC-S SKUs:	VRCS3350-230V	VRCS3300-230V	VRCS3307-230V	VRCS3357-230V
Configured system weight	321 kg (708 lbs)	276 kg (609 lbs)	312 kg (688 lbs)	339 kg (747 lbs)
Shipping Weight	421 kg (928 lbs)	363 kg (800 lbs)	399 kg (880 lbs)	439 kg (968 lbs)
Sound****	52.5 dBA @ 1m	52.5 dBA @ 1m	52.5 dBA @ 1m	52.5 dBA @ 1m
Rack dimensions U; HxWxD; (Inches)	42U; 2000 mm, 800 mm, 1200 mm (78.6", 31.5", 47.8")	42U; 2000 mm, 600 mm, 1200 mm (78.6", 23.6", 47.8")	48U; 2200 mm, 600 mm, 1200 mm (86.6", 23.6", 47.8")	48U; 2200 mm, 800 mm, 1200 mm (86.6", 31.5", 47.8")
Usable space available for IT equipment	32U	32U	38U	38U
Shipping dimensions of rack HxWxD; (Inches):	2134mm, 826mm, 1385mm (84", 32.5", 54.5")	2134mm, 626mm, 1385mm (84", 24.6", 54.5")	2396mm, 626mm, 1385mm (94.3", 24.6", 54.5")	2396mm, 826mm, 1385mm (94.3", 32.5", 54.5")
Certifications	CE Marked			
rPDU (Pre-installed in rack):	GU30017L			
Category:	Switched			
Sub Category:	Outlet Level Monitoring EC			
Voltage	200 - 240 V			
Current	32 A			
VA per Input	7,3 kW			
Frequency	50/60 Hz			
Over Current Protection	(2) 16A Single Pole Magnetic Breakers (5kAIC Rated)			
Horizontal/Vertical	Vertical			
Input plug	IEC60309 2P + E, 32A, 250V, Splashproof IP44			
Cord length	3 m (10 ft)			
Outlets	(20) Locking IEC 320 C13, (4) Locking IEC 320 C19			
Vertive Intelligence Director enabled	YES			
Geist Upgradable 2.0 protocols supported	DHCP, HTTP, HTTPS, IPv4, IPv6, LDAP, NTP, RADIUS, RSTP, SSH, SMTP, SNMP (v1/v2c/v3), Syslog, TACACS+			
Certifications/Agency Approvals	CE Marked, Complies with EN 55032 and EN 55024, Complies with IEC 60950-1 (CB Certificate Available), RoHS Compliant, RCM Mark (EMC Only), China RoHS, C _e Mark			
Cooling Kit Type:	VRC102KIT			
Cooling capacity	0.9 - 3.5 kW			
Air Volume	750 m ³ /h (441 CFM)			
VRC Input plug	IEC 320 C20 Inlet + Interconnection Cable IEC 320 C19 to C20			
Cord length	3 m (10 ft)			
Voltage / Frequency	50/60 Hz			
Full Load Amperage (FLA)	11,5 A			
Refrigerant type (pre-charged)	R410A, 720 g (1.58 lb)			
VRC Form Factor	10U*			
Shipping dimensions H,D,W; (Inches)	1194mm, 737mm, 889mm (47", 29", 35")			
VRC-S Operating Temperature	18 °C - 30 °C (65 °F - 86 °F)			
VRC-S Operating Humidity	8 - 80 % (non-condensing)			
LCD Screen Included	YES			
Condensate Pump integrated	YES, powered via rPDU			
Condensate Pump tube length	7.5 m (24 ft)			
Duct Length	3.8 m (12.4 ft)			
Certifications	CE Marked, Complies with EN 60335-1, EN 60335-2-40, EN 55014-1, EN 55014-2, EN 61000-3-2, EN 61000-3-3, RoHS Compliant			

*Do not block any U spaces with equipment past the rear EIA mounting rails
 ****(2) U-Lock IEC C13 outlets will be required and preprogrammed for the backup fan and condensate pump
 **** At 60% fan speed and 40% compressor speed

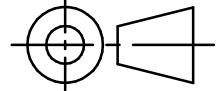

 Dimensions in mm	Allgemeintoleranzen General tolerances		Oberfläche Finish	Werkstoff / Material	Gewicht: Weight:
	-		-		
	Drawn	18/06/2020	David Petru	Bezeichnung / Description	
	Checked	18/06/2020	Jakub Franc	VRC-S (SELF CONTAINED)	
	Approved	-	-	SUBMITTAL DRAWING	
				Zeichnungs-Nr. / Drawing no.	Maßstab Scale
				VRC-S 33XX-230V	
				Verwendet in / Used in	Blatt/Sheet 3/4
Rev.	Change	Date	Name	 Vertiv Integrated Systems GmbH Mariakirchener Straße 38 94424 Arnstorf, Germany	
C	CO-1016893	29/10/2020	Petru		

Disclosure and photocopying of this document, exploitation and communication of its contents are not permitted, unless permission is expressly granted. All rights are reserved.

VRC-S Rack accessories compatibility chart

MODEL	ACCESSORIES																							
	VRA1000	VRA1001	VRA1002	VRA1003	VRA1004	VRA1005	VRA1006	VRA1007	VRA1008	VRA1009	VRA1010	VRA1011	VRA1013	VRA1014	VRA1015	VRA1016	VRA1017	VRA1018	VRA1020	VRA1021	VRA1022	VRA1023	VRA1024	
SELF CONTAINED																								
VRCS3300-230V	-	-	-	-	X	X	X	X	X	X	X	X	-	-	-	-	-	-	-	X	-	-	-	-
VRCS3350-230V	X	X	X	X	X	X	X	X	X	X	X	X	-	-	-	X	-	X	-	X	X	X	-	-
VRCS3307-230V	X	X	X	X	X	X	X	X	X	X	X	X	-	-	X	-	-	-	-	X	X	X	-	-
VRCS3357-230V	X	X	X	X	X	X	X	X	X	X	X	X	-	-	-	-	X	-	X	X	X	X	-	-

VRA1024	Horizontal Cable Organizer Side Channel 22 to 38 inch adjustment (Qty. 1)
VRA1023	1U x 6" Deep Horizontal Cable Manager, Single-Sided with Cover (Qty. 1)
VRA1022	2U x 6" Deep Horizontal Cable Manager, Single-Sided with Cover (Qty. 1)
VRA1021	Vertical Cable Organizer, 8 Cable Rings, Zero U (Qty. 2)
VRA1020	Hinged Covers 800mm Wide 48U Vertical Cable Manager (Qty. 2)
VRA1018	Hinged Covers 800mm Wide 42U Vertical Cable Manager (Qty. 2)
VRA1017	Vertical Cable Manager for 800mm Wide 48U (Qty. 2)
VRA1016	Vertical Cable Manager for 800mm Wide 42U (Qty. 2)
VRA1015	Vertical Cable Manager for 600mm Wide 48U (Qty. 2)
VRA1014	Vertical Cable Manager 600mm Wide 42U (Qty. 2)
VRA1013	Horizontal Cable Organizer Side Channel 20 to 33 inch adjustment (Qty. 1)
VRA1011	Tool less D-Rings Large (Qty. 100)
VRA1010	Tool less D-Rings Large (Qty. 10)
VRA1009	Tool less D-Rings small (Qty. 100)
VRA1008	Tool less D-Rings small (Qty. 10)
VRA1007	Tool Less Cable Management - Velcro Strap (Qty. 100)
VRA1006	Tool Less Cable Management - Lobster Claw (Qty. 100)
VRA1005	Tool Less Cable Management - Velcro Strap (Qty. 10)
VRA1004	Tool Less Cable Management - Lobster Claw (Qty. 10)
VRA1003	2U x 4" Deep Horizontal Cable Manager, Single-Sided with Cover (Qty. 1)
VRA1002	Horizontal Cable Manager, 1U x 4" Deep, Single-Sided with Cover (Qty. 1)
VRA1001	2U Horizontal Cable Organizer 2U with Metal D Rings (Qty. 1)
VRA1000	1U Horizontal Cable Organizer with Metal D Rings (Qty. 1)

 Dimensions in mm	Allgemeintoleranzen General tolerances		Oberfläche Finish		Werkstoff / Material		Gewicht: Weight:	
	-		-					
	Drawn	18/06/2020	Date		Name		Bezeichnung / Description	
	Checked	18/06/2020			David Petru		VRC-S (SELF CONTAINED) SUBMITTAL DRAWING	
	Approved	-			Jakub Franc			
							Zeichnungs-Nr. / Drawing no.	
							VRC-S 33XX-230V	
							Maßstab Scale	
							Verwendet in / Used in	
							Blatt/Sheet 4/4	
Rev.	Change	Date	Name		 Vertiv Integrated Systems GmbH Mariakirchener Straße 38 94424 Arnstorf, Germany			
C	CO-1016893	29/10/2020	Petru					

Weitergabe sowie Vervielfältigung dieser Unterlage, Verwertung und Mitteilung ihres Inhalts nicht gestattet, soweit nicht ausdrücklich zugestanden. Alle Rechte vorbehalten.