



Vertiv Integrated Solutions Guide

We at Vertiv know you're focused on growing your business and delighting your customers every day. Let our high performance digital infrastructure solutions do what they're designed to do, and you can get on with focusing on your business success.

- Remote Management
- Rack PDUs
- UPS
- Racks and Integrated Solutions
- Services
- Software and Controls
- Rack and Storage Cooling

Vertiv, the most comprehensive provider of Infrastructure Solutions

Architects of Continuity™

Discover our award winning first-ever augmented reality app available for download today! **Vertiv™ XR App** brings you up close and personal with our digital infrastructure solutions.



Products

At Vertiv, we are focused on delivering all the **reliable IT Infrastructure solutions** that you need for assured business-critical continuity. Below you can find our most popular Vertiv product portfolio.

SINGLE PHASE UPS (Uninterruptible Power Supply)

Line Interactive Technology



EDGE-500IRM1U	Vertiv™ EDGE™ 1ph UPS, 0,5 kVA, input IEC60320 C14 inlet, 1U, output - 230V, output socket groups - (6)C13
EDGE-1000IRM1U	Vertiv EDGE 1ph UPS, 1,0 kVA, input IEC60320 C14 inlet, 1U, output - 230V, output socket groups - (6)C13
EDGE-1500IRM1U	Vertiv EDGE 1ph UPS, 1,5 kVA, input IEC60320 C14 inlet, 1U, output - 230V, output socket groups - (6)C13
EDGE-1500IRT2UXL	Vertiv EDGE 1ph UPS, 1,5 kVA, input IEC60320 C14 inlet, 2U, output - 230V, output socket groups - (6)C13
EDGE-2200IRT2UXL	Vertiv EDGE 1ph UPS, 2,0 kVA, input IEC60320 C20 inlet, 2U, output - 230V, output socket groups - (6)C13 (1)C19
EDGE-3000IRT2UXL	Vertiv EDGE 1ph UPS, 3,0 kVA, input IEC60320 C20 inlet, 2U, output - 230V, output socket groups - (6)C13 (1)C19

Line Interactive Lithium-Ion Technology



EDGE-LI-1500IRT2U	Vertiv™ EDGE™ 1ph UPS, Li-Ion, 1,5 kVA, input IEC60320 C14 inlet, 2U, output - 230V, output socket groups - (6)C13
EDGE-LI-2200IRT2U	Vertiv EDGE 1ph UPS, Li-Ion, 2,2 kVA, input IEC60320 C20 inlet, 2U, output - 230V, output socket groups - (6)C13 (1)C19
EDGE-LI-3000IRT2U	Vertiv EDGE 1ph UPS, Li-Ion, 3,0 kVA, input IEC60320 C20 inlet, 2U, output - 230V, output socket groups - (6)C13 (1)C19

Double Conversion Technology



GXT5-750IRT2UXLE	Vertiv™ Liebert® GXT5 1ph UPS, 0,75kVA, input plug IEC C14 inlet, 2U, output - 230V, output socket groups (8)C13
GXT5-1000IRT2UXLE	Vertiv Liebert GXT5 1ph UPS, 1kVA, input plug IEC C14 inlet, 2U, output - 230V, output socket groups (8)C13
GXT5-1500IRT2UXLE	Vertiv Liebert GXT5 1ph UPS, 1,5kVA, input plug IEC C14 inlet, 2U, output - 230V, output socket groups (8)C13
GXT5-2000IRT2UXLE	Vertiv Liebert GXT5 1ph UPS, 2kVA, input plug IEC C20 inlet, 2U, output - 230V, output socket groups (8)C13
GXT5-3000IRT2UXLE	Vertiv Liebert GXT5 1ph UPS, 3kVA, input plug IEC C20 inlet, 2U, output - 230V, output socket groups (8)C13 & (1)C19
GXT5-5000IRT5UXLE	Vertiv Liebert GXT5 1ph UPS, 5kVA, input plug - hardwired, 5U, output - 230V, hardwired, output socket groups (6)C13 & (2)C19
GXT5-6000IRT5UXLE	Vertiv Liebert GXT5 1ph UPS, 6kVA, input plug - hardwired, 5U, output - 230V, hardwired, output socket groups (6)C13 & (2)C19

Double Conversion with Lithium-Ion Technology



GXT5LI-1000IRT2UXL	Vertiv™ Liebert® GXT5 1ph UPS, 1kVA, Li-Ion, input plug IEC C14 inlet, 2U, output - 230V, output socket groups (8)C13
GXT5LI-1500IRT2UXL	Vertiv Liebert GXT5 1ph UPS, 1,5kVA, Li-Ion, input plug IEC C14 inlet, 2U, output - 230V, output socket groups (8)C13
GXT5LI-2000IRT2UXL	Vertiv Liebert GXT5 1ph UPS, 2kVA, Li-Ion, input plug IEC C20 inlet, 2U, output - 230V, output socket groups (8)C13
GXT5LI-3000IRT2UXL	Vertiv Liebert GXT5 1ph UPS, 3kVA, Li-Ion, input plug IEC C20 inlet, 2U, output - 230V, output socket groups (8)C13 & (1)C19

rPDU (Rack Power Distribution Unit)

Basic: rPDU solution without sensor monitor; no network feature



VP7553	Vertiv™ Geist™ Rack PDU, Basic, 0U, input IEC 60309 230V 32A, outlets (20)C13 (4)C19
VP7557	Vertiv Geist Rack PDU, Basic, 0U, input IEC 60309 230/400V 3x16A, outlets (36)C13 (6)C19
VP9559	Vertiv Geist Rack PDU, Basic, 1U, input IEC 60320 C20 power inlet 230V 16A, outlets (10)C13 (2)C19

Monitored (unit level): rPDU with networked sensor monitor readout control



VP8853	Vertiv Geist Rack PDU, Monitored (Unit Level), EC, 0U, input IEC 60309 230V 32A, outlets (36)C13 (6)C19
VP8858	Vertiv Geist Rack PDU, Monitored (Unit Level), EC, 0U, input IEC 60320 C20 power inlet 230V 16A, outlets (18)C13 (2)C19
VP8881	Vertiv Geist Rack PDU, Monitored (Unit Level), EC, 0U, input IEC 60309 230/400V 3x16A, outlets (36)C13 (6)C19
VP8886	Vertiv Geist Rack PDU, Monitored (Unit Level), EC, 0U, input IEC 60309 230/400V 3x32A, outlets (30)C13 (12)C19
VP4G8002	Vertiv Geist Rack PDU, Monitored (Unit Level), EC, 0U, input IEC 60309 230/400V 3x16A, RCM, combi outlets (36)C13 or C19
VP4G9000	Vertiv Geist Rack PDU, Monitored (Unit Level), EC, 0U, input IEC 60309 230V 32A, RCM, combi outlets (36)C13 or C19
VP4G9002	Vertiv Geist Rack PDU, Monitored (Unit Level), EC, 0U, input IEC 60309 230/400V 3x32A, RCM, combi outlets (36)C13 or C19
UI30006L	Vertiv Geist Rack PDU, Monitored (Unit Level), 0U, UPDU rating 3ph 16A 230/415V, locking outlets (24)C13 (12)C19

Switched (Unit Level): rPDU with networked power circuit switching control



VP52101	Vertiv Geist Rack PDU, Switched (Unit Level), EC, 1U, input IEC 60320 C20 power inlet 230V 16A, combi outlets (12)C13 or C19
VP8953	Vertiv Geist Rack PDU, Switched (Unit Level), EC, 0U, input IEC 60309 230V 32A, locking outlets (20)C13 (4)C19
VP8959EU3	Vertiv Geist Rack PDU, Switched (Unit Level), EC, 0U, input IEC 60320 C20 power inlet 230V 16A, locking outlets (21)C13 (3)C19

Switched (Outlet Level): rPDU with networked power circuit switching control



GU30004L	Vertiv Geist Rack PDU, Switched (Outlet Level), EC, 0U, input IEC 60309 230/400V 3x16A, locking outlets (30)C13 (6)C19
GU30007L	Vertiv Geist Rack PDU, Switched (Outlet Level), EC, 0U, input IEC 60309 230V 16A, locking outlets (21)C13 (3)C19
GU30010L	Vertiv Geist Rack PDU, Switched (Outlet Level), EC, 0U, input IEC 60309 230/400V 3x32A, locking outlets (30)C13 (6)C19
GU30017L	Vertiv Geist Rack PDU, Switched (Outlet Level), EC, 0U, input IEC 60309 230V 32A, locking outlets (20)C13 (4)C19
UU30009L	Vertiv Geist Rack PDU, Switched (Outlet Level), 0U, UPDU rating 3ph 16A 230/415V, locking outlets (30)C13 (6)C19
UU30010L	Vertiv Geist Rack PDU, Switched (Outlet Level), 0U, UPDU rating 3ph 32A 230/415V, locking outlets (18)C13 (12)C19

RTS



VA4U2100	Vertiv Geist RTS, Monitored (Unit Level), 1U, input (2) IEC60320 C20 power inlet 100-240V 16A or 20A, combi outlets (12)C13 or C19
VA4G9100	Vertiv Geist RTS, Monitored (Unit Level), 1U, input (2) IEC60309 230V 32A, combi outlets (12)C13 or C19

RACK COOLING



CRD102-1D00A	12kW Row Cooling Indoor Unit
CCD101S-00A	10kW Row Cooling Outdoor Unit (Condenser)
LAK10CE	10kW Low Ambient Kit
CRD255-PD00A	25kW Row Cooling Indoor Unit
CCD254H-00A	25kW Row Cooling Outdoor Unit (Condenser)
LAK2535CE	25kW Low Ambient Kit

RACKS



VR3100	VR3100 - 42U x 600mm x 1100mm (HxWxD), Vertiv™ VR Rack
VR3107	VR3107 - 48U x 600mm x 1100mm (HxWxD) Vertiv VR Rack
VR3150	VR3150 - 42U x 800mm x 1100mm (HxWxD) Vertiv VR Rack
VR3157	VR3157- 48U x 800mm x 1100mm (HxWxD) Vertiv VR Rack
VR3300	VR3300 - 42U x 600mm x 1200mm (HxWxD) Vertiv VR Rack
VR3307	VR3307 - 48U x 600mm x 1200mm (HxWxD) Vertiv VR Rack
VR3350	VR3350 - 42U x 800mm x 1200mm (HxWxD) Vertiv VR Rack
VR3357	VR3357 - 48U x 800mm x 1200mm (HxWxD), Vertiv VR Rack
VRA8561	VR Cable Trough, 600mm
VRA8571	VR Cable Trough, 800mm
VRA8581	VR Cable Trough, 300mm



ITS (Information Technology Solutions)

Vertiv™ Avocent® Digital Infrastructure (ADX): Simple, Secure, Scalable IT Management platform for Edge, Enterprise and Hybrid



ADX-MP1000DAC-400	Vertiv ADX Management Platform
ADX-MP1000VA	Vertiv ADX Management Platform - MP1000 Virtual Appliance
ADX-RM1048PDAC-400	Vertiv ADX Rack Manager, 48 PoE Ports
ADX-IPUHD-400	Vertiv ADX IPUHD 4K IP KVM device
ADX-IPIQ-400	Vertiv ADX IPIQ IP KVM device, 1920x1080, VGA native adapter.

Vertiv™ Avocent® High Performance KVM: Secure, Reliable Access & Control for an “At the Desk” Experience



MPU108EDAC-001	8 port, 1 digital KVM path, dual AC Power Supply
MPU2016DAC-001	16 port, 2 digital KVM paths, dual AC Power Supply
MPU2032DAC-001	32 port, 2 digital KVM paths, Dual AC Power Supply
MPU4032DAC-001	32 port, 4 digital KVM paths, dual AC Power Supply
MPU8032DAC-001	32 port, 8 digital KVM paths, dual AC Power Supply
MPUIQ-VMCHS	HIGH-RES/VM/CAC/USB2HS IQ MODULE
MPUIQ-SRL	MergePoint Unity switch serial IQ module

Vertiv™ Avocent® ACS 800/8000 Serial Console: A powerful out-of-band tool to maintain critical IT assets



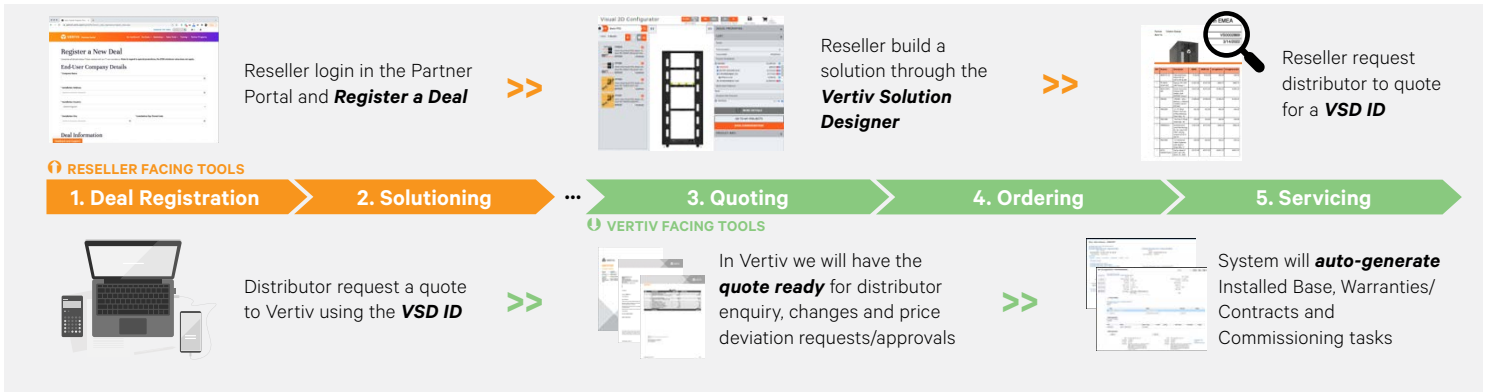
ACS8008MDAC-404	8-Port ACS8000 Console System with dual AC Power Supply and Analog Modem
ACS8008-EU-DAC-400	8 Port ACS8000 cellular with 4G/LTE dual AC Power Supply
ACS8016DAC-404	16-Port ACS8000 Console System with dual AC Power Supply
ACS8016MDAC-404	16-Port ACS8000 Console System with dual AC Power Supply and Analog Modem
ACS8016-EU-DAC-400	16 Port ACS8000 cellular with 4G/LTE dual AC AC Power Supply
ACS8032MDAC-404	32-Port ACS8000 Console System with dual AC Power Supply and Analog Modem
ACS8032-EU-DAC-400	32 Port ACS8000 cellular with 4G/LTE dual AC AC Power Supply
ACS8048DAC-404	48-Port ACS8000 Console System with dual AC Power Supply
ACS8048MDAC-404	48-Port ACS8000 Console System with dual AC Power Supply and Analog Modem
ACS8048-EU-DAC-400	48 Port ACS8000 cellular with 4G/LTE dual AC AC Power Supply

Vertiv™ Avocent® Local Rack Access (LRA) Console: A local data center access point that provides simplicity, efficiency, and ease of use



LRA185KMM-001	19" LCD, USB KB, 2USB PASS-US INTL ENG
LRA185KMM8D-001	LCD,8P KVM, 8 CABLES, USB KB-US INTL
LRA185KMM16D-001	LCD,16P KVM, 16 CABLES, USB KB-US INTL

Your Vertiv Journey. The Vertiv Solution Designer simplifies, integrates, and accelerates the customer buying journey for all our rack products into one solution. Making the most of your Vertiv customer journey:



Did you know?

- We now offer the **Priority Program**, where you can have your Racks delivered in only 5 days?
- The **Lithium-Ion battery technology** will save you time and money, as it has faster recharge times?
- That you can deploy a **Comprehensive Edge Micro Data Center Solution** in Days?

How to choose your UPS?



Check out the **UPS Selector** for more details.

How to select your Rack?



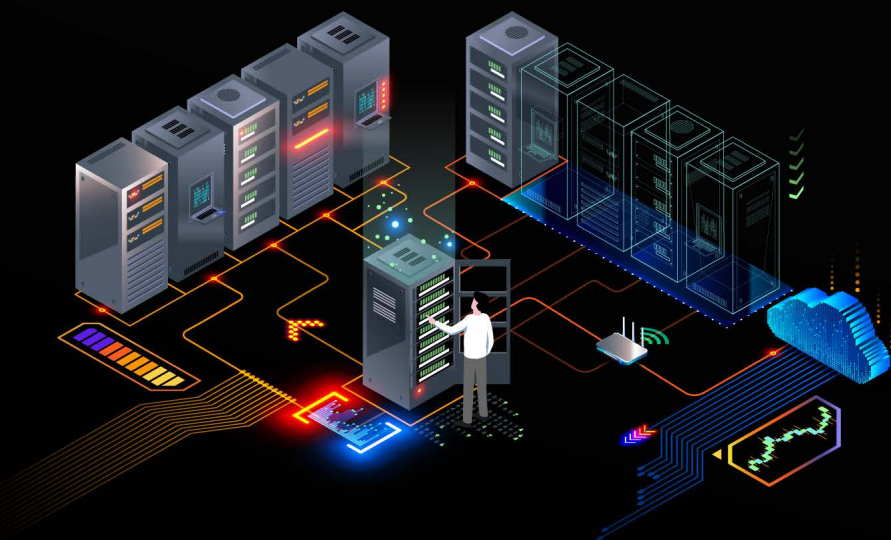
Check out the **Help me build** tool to configure your own solution.

How to choose your rPDU?



Choose the rack PDU most suitable for your application using the **rPDU Finder**.

Vertiv Partner Program
partners.vertiv.com



Vertiv.com

Fraser Rd, Priory Business Park, Bedford, MK44 3BF, United Kingdom
 +44 023 8061 0311

