



Case study

Engineered for flexibility: OADC Parklands standardises on trusted solution by Vertiv



Background

Open Access Data Centres (OADC), a WIOCC Group Company, is revolutionising data centre services across Africa by deploying carrier-neutral, hyperscale facilities at strategic locations throughout the continent. The company prioritises client experience, customised solutions, and advanced information systems to support business-critical decision-making.

OADC operates its infrastructure at major cable landing sites and key business hubs across Africa, with Vertiv™ solutions implemented across multiple sites in South Africa and Nigeria. Among these, the Parklands data centre in Rosebank, Johannesburg, stands as a modern, strategically positioned facility purpose-built with Vertiv to support high-density workloads and emerging customer requirements.

Challenge

The Parklands facility was conceived as a platform for change rather than a static asset. Originally constructed by Vertiv as a prefabricated, modular, Tier III-compliant data centre for a pan-African telecommunications provider, the design challenge extended beyond reliability alone. It required delivering a mission-critical facility capable of meeting immediate performance requirements while enabling rapid adaptation to future capacity, workload and technology shifts.

This philosophy of embedded flexibility became even more valuable in late 2025, when OADC acquired Parklands alongside six additional data centres across South Africa, expanding its footprint to 13 core data centres and over 30 edge facilities nationwide. Post-acquisition priorities centred on operational continuity, scalable growth and long-term performance optimisation - all inherently supported by the site's modular architecture.

Parklands needed to demonstrate how prefabricated modular infrastructure enables speed: speed of deployment, speed of scaling and, critically, speed of adaptation. As client requirements evolve, whether driven by hyperscale workloads or high-density computing environments, the site must adapt without the disruption, cost or structural limitations associated with traditional builds.

Company profile:

Open Access Data Centres (OADC) operates hyperscale, Tier-III facilities in South Africa, Nigeria, and the DRC, built on a unique core-to-edge architecture that enhances application performance by delivering data, content and services closer to end users. OADC aims to become the pre-eminent pan-African infrastructure partner to cloud operators, OTTs, Content Service Providers (CSPs), telcos/ carriers, metro operators, ISPs, government, finance, and large enterprise.

Industry: Data centre services

Region:

Johannesburg, South Africa



Solution

The facility currently includes more than 100 Vertiv™ racks, with capacity to scale to almost 300 as demand grows. The solution was engineered to support dynamic performance envelopes rather than fixed operating conditions. Key elements include:

- **Vertiv™ Liebert® Trinergy™ Cube UPS:** Delivering exceptional efficiency (up to 99% in power conditioning mode) while supporting high power density per core, enabling flexible growth as load increases.
- **Vertiv™ Liebert® PDX direct expansion cooling units:** Providing precise, responsive thermal management via variable speed compressor to address fluctuating load profiles and increasing rack densities.
- **Vertiv™ SmartAisle™** containment and control: Optimising availability, efficiency, and operational adaptability as compute architectures evolve.
- **Lithium-ion batteries:** Enhancing lifecycle efficiency while reducing operational overhead.

Crucially, the Parklands building itself was engineered as an expansion-ready framework. Rather than constraining future growth, the structure was designed to accommodate modular system extension across additional halls, including IDC 9, 10, and 11. Each new deployment benefits from the same standardisation principles of rapid scalability, operational resilience and performance optimisation.

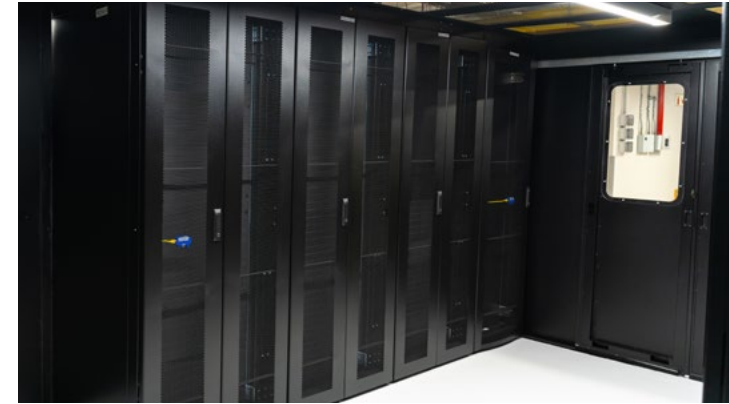
Outcome

Parklands is strategically allocated to Tier 1, high-demand clients, including hyperscalers and AI-driven organisations, whose requirements emphasise power density, thermal performance and architectural agility.

At the heart of the site is the IDC 8 data hall, a fully modular Vertiv deployment integrating white space, racks, UPSs, cooling and supporting infrastructure into a cohesive, scalable system. Designed for rack densities of 10 kW and achieving a competitive power usage effectiveness (PUE) for the area and application, IDC 8 demonstrates how efficiency and flexibility can coexist without compromise.

The recently commissioned IDC 10 hall continues this trajectory, incorporating a full Vertiv architecture – UPSs, batteries, computer room air conditioning (CRAC) units and containment - into a typical brick-and-mortar facility, which already supports high-profile enterprise clients, including a major cybersecurity provider and a multinational financial services institution.

Parklands reflects a broader shift in how data centres are designed: not as static facilities built to fixed specifications, but adaptable systems that scale with demand. Vertiv's modular, scalable infrastructure and broad technology portfolio help enable this transition. By treating critical digital infrastructure as a strategic part of design, Vertiv helps operators expand, adapt and optimise with confidence, turning infrastructure into an enabler of next-generation digital transformation.



“OADC made an executive decision to standardise on certain Vertiv™ solutions. The Vertiv™ brand essentially sells itself; we don't have to convince our clients of Vertiv efficiencies, which builds confidence from the outset. Vertiv's technology is tried and tested, with an excellent reputation. Beyond the equipment itself, the local Vertiv team has also played a critical role in supporting our strategy, reinforcing OADC's decision to use Vertiv as one of our preferred vendors”.

— **Marc Matthews,**
Engineering Director at OADC.

Vertiv.com | Vertiv Head Office, Building 17, Thornhill Office Park, 94 Bekker Road, Midrand 1686, South Africa

© 2026 Vertiv Group Corp. All rights reserved. Vertiv™ and the Vertiv logo are trademarks or registered trademarks of Vertiv Group Corp. All other names and logos referred to are trade names, trademarks or registered trademarks of their respective owners. While every precaution has been taken to ensure accuracy and completeness here, Vertiv Group Corp. assumes no responsibility, and disclaims all liability, for damages resulting from use of this information or for any errors or omissions. Specifications, rebates and other promotional offers are subject to change at Vertiv's sole discretion upon notice.

SL-80513 (04/26)