

Alber™ Battery Capacity Tester Integrated System



Quick Installation Guide

There are no special mounting requirements for the Vertiv™ Alber Battery Capacity Tester Integrated (BCTI) monitor load control unit. It may be placed on any flat unheated surface protected from moisture. Locate the BCTI unit within sufficient proximity to the other battery capacity test equipment to allow the cables to reach their terminating points.

The BCTI unit ships with a bracket that may be used to mount the unit onto an Alber Continuous Load Unit (CLU).

Mounting atop the CLU control box (optional)

CAUTION: Only mount the BCTI unit on top of the CLU control box. The BCTI unit should never be mounted on top of the CLU load cage because of the heat generated under test.

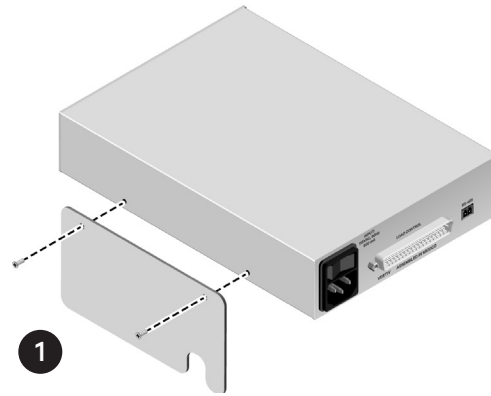
1. Attaching the bracket

Remove the two screws from one side of the BCTI unit. Use the supplied screws to mount the bracket to the BCTI unit as shown in the illustration.

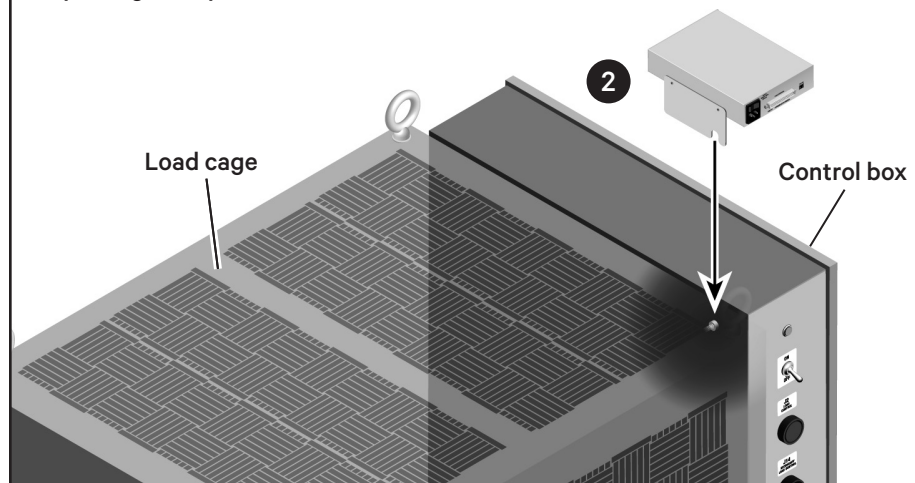
2. Positioning the BCTI unit on top of the CLU control box

Slip the tongue of the bracket into the gap between the load cage and control box. Capture the spacer, located within the gap, with the fork in the bracket and rest the BCTI unit on top of the control box.

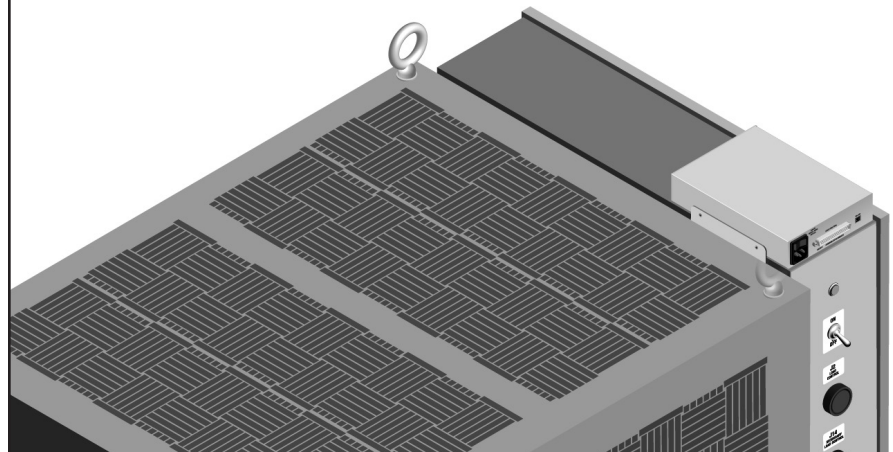
Attaching the Bracket



Capturing the Spacer with the Bracket Fork



Mounted Vertiv™ Alber™ Battery Capacity Tester Integrated Unit



SYSTEM CONNECTION

1. Connecting to the Alber Continuous Load Unit (CLU)

Attach the supplied load control cable to the BCTI unit's load control port and its opposite end to the port (usually labeled J2) of a CLU.

CAUTION: Ensure you follow load test voltage requirements. Improper load connections can damage the CLU.

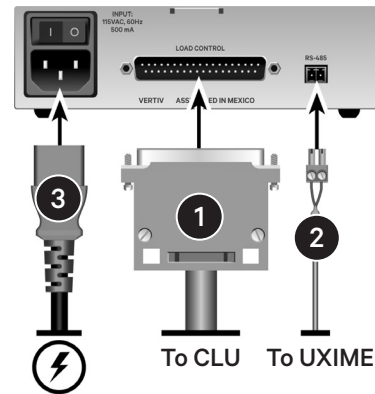
2. Connecting to the Alber Universal Xplorer Industrial Monitor (UXIME)

Attach the supplied charger control sense lead cable to the RS-485 port and its opposite end to the RS-485 port of the system's UXIME stationary battery monitor.

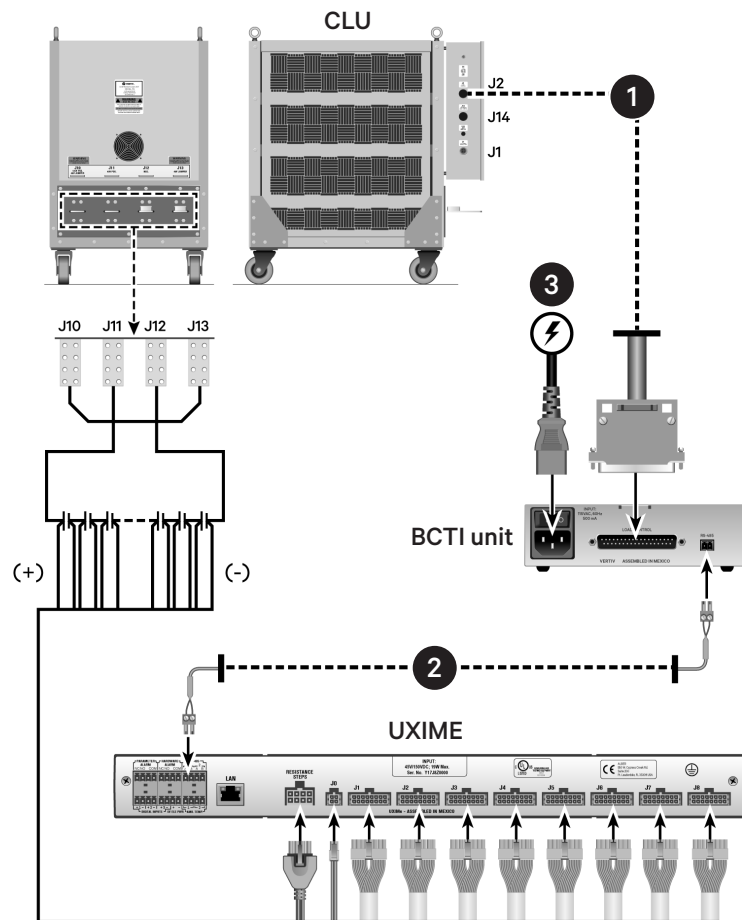
3. Connecting to power

Connect the supplied AC power cable to the AC Power input connector on the rear panel of the BCTI unit and plug the other end into a UPS protected 120VAC, 60Hz receptacle.

Vertiv™ Alber™ Battery Capacity Tester Integrated Unit Port Connections



Vertiv™ Alber™ Battery Capacity Tester Integrated Unit System Configuration



To contact Vertiv Technical Support: visit www.Vertiv.com

© 2022 Vertiv Group Corp. All rights reserved. Vertiv™ and the Vertiv logo are trademarks or registered trademarks of Vertiv Group Corp. All other names and logos referred to are trade names, trademarks or registered trademarks of their respective owners. While every precaution has been taken to ensure accuracy and completeness here, Vertiv Group Corp. assumes no responsibility, and disclaims all liability, for damages resulting from use of this information or for any errors or omissions. Specifications, rebates and other promotional offers are subject to change at Vertiv's sole discretion upon notice.

